

## HUGE REDUCTION — TARTAN



**Builder:** TARTAN

**Year Built:** 2004

**Model:** Cruising Sailboat

**Price:** PRICE ON APPLICATION

**Location:** United States

**LOA:** 44' 0" (13.41m)

**Beam:** 14' 1" (4.29m)

**Min Draft:** 5' 6" (1.68m)

**Max Draft:** 5' 6" (1.68m)

**Cruise Speed:** 9 Kts. (10 MPH)

**Max Speed:** 10 Kts. (12 MPH)

Our experienced yacht broker, Andrey Shestakov, will help you choose and buy a yacht that best suits your needs **HUGE REDUCTION — TARTAN** from our catalogue. Presently, at Shestakov Yacht Sales Inc., we have a wide variety of yachts available on our sale's list. We also work in close contact with all the big yacht manufacturers from all over the world.

If you would like to buy a yacht **HUGE REDUCTION — TARTAN** or would like help answering any questions concerning purchasing, selling or chartering a yacht, please call **+1(954)274-4435**

# TABLE OF CONTENTS

TABLE OF CONTENTS	2
SPECIFICATIONS	5
Overview	5
Basic Information	6
Dimensions	6
Speed, Capacities and Weight	6
Accommodations	6
Hull and Deck Information	6
Engine Information	7
DETAILED INFORMATION	8
Ready for your pleasure	8
Manufacturer Provided Description	8
Tartan Design:	9
Cruising World states:	9
Main Salon	10
STATEROOMS	10
Heads	11
Galley & Plumbing	11
Private Reserve is a turnkey timeless classic.	11
Specifications	12
Exclusions	12
Disclaimer	13
PHOTOS	14
30 At dock side	14
2 Aft Starboard	14
4 Starboard Profile - 2	14
1 Starboard Profile	14
5 At dockside - 2	14

6 At dockside -3	14
7 At dockside - 4	15
8 At dock side - 5	15
9 Helm - 2	15
9 Helm - 2	15
12 Helm - 4	15
11 Helm - 3	15
13 Companionway	16
14 Salon looking forward	16
15 Salon looking forward - 2	16
16 Salon looking Port	16
17 Galley open and bright to the Port - One step down	16
18 Vee Berth looking aft and Starboard	16
20 Master head looking aft and to Starboard - Lots of room	17
19 Forward Berth Island Queen - Lots of storage	17
21 Master head vanity and storage	17
22 Salon looking aft	17
23 Salon looking aft and Starboard	17
24 Navigation Center to Starboard	17
25 Midship Head - Portside	18
26 Midship Head - 2	18
28 Quarter Berth Starboard of the Companionway	18
27 Midship Head - 3	18
29 Quarter Berth Starboard of the Companionway	18
CONTACTS	19
Contact details	19
Telephones	19
Office hours	19
Address	19



---

# SPECIFICATIONS

---

## Overview

---

Recent price reduction to 299k good until Oct. 15th, 2017, Price will go back up after vessel is layed up for winter storage.

Tartan 4400 Deck Salon

This Vessel is great! Freshwater Only

Sailing is about taking a headwind and turning it into something that will propel you forward as opposed to taking you backward. (Tartan Yachts)

Whether your cruising plans call for the weekend or weeks-long cruising, or for living aboard for the season or forever, this Tartan 4400 will indulge you with an abundance of comfort and convenience. The Tartan 4400 interior is a gem, Tartan owners enjoy owning a yacht that is not only beautifully appointed but sails right past other cruisers. Tartan has incorporated their trademark mix of passage-making speed and superior stability into this 4400.

"Private Reserve" has only seen Freshwater and enjoyed short Great Lakes Sailing seasons.

Only 28 4400's were built,

Fair Warning "PRIVATE RESERVE" is the best of the 28.

A Must See.

Meticulous and experienced owners.

Majestic Flag Blue hull, you CAN see yourself!

- There are other Raised Deck Salon and Pilothouse Cruisers, but this Tartan 4400 comes with features you can not find elsewhere:
- Luxurious and Unparalleled Tartan styling,
- Unmatched Tartan performance and exceptional value.
- The team of designers and builders at Tartan spared no expense on the design and construction of the 4400's.

**\*\*Call or e-mail to schedule your personal showing today!**

## Basic Information

Category: Cruising Sailboat	Model Year: 2004
Year Built: 2004	Country: United States

## Dimensions

LOA: 44' 0" (13.41m)	LWL: 37' 6" (11.43m)
LOD: 44' 0" (13.41m)	Beam: 14' 1" (4.29m)
Min Draft: 5' 6" (1.68m)	Max Draft: 5' 6" (1.68m)
Clearance: 63' 0" (19.20m)	

## Speed, Capacities and Weight

Cruise Speed: 9 Kts. (10 MPH)	Max Speed: 10 Kts. (12 MPH)
Displacement: 24000 Pounds	Water Capacity: 200 Gallons
Holding Tank: 48 Gallons	Fuel Capacity: 80 Gallons

## Accommodations

Total Cabins: 2	Total Berths: 5
Total Heads: 2	

## Hull and Deck Information

Hull Material: Fiberglass	Hull Configuration: Monohull
---------------------------	------------------------------

## Engine Information

---

**Engines:** 2

**Manufacturer:** Yanmar

**Model:** 4JH3-TE

**Engine Type:** Inboard

**Fuel Type:** Diesel

---

## DETAILED INFORMATION

---

### Ready for your pleasure

---

The cockpit is a true sailor's space, with ample, comfortable seating and perfect sightlines from behind the wheel. Below decks, custom cabinet grade furniture softens any weather and soothes the eye. Huge windows provide both light and the feeling of being surrounded by the sea.

Majestic Flag Blue Awlgrip, White Boot color with Gold on White outlined cove stripe

Beavertail Keel

Rich Blue Leather Upholstery in Main Cabin with fine crafted Cherry hardwood, vented doors, Teak & Holly sole

Windlass Electric Primary Winches - Harken 53.2 STEC Electric Main Halyard Winch - Harken 40.2 STEC

54" Mini-Maxi Wheel

Deck Wash-down System Hot & Cold Cockpit Shower

Technautics Refer/Freezer – Top and Front accesses

Marine Air Reverse Cycle AC System

Lewmar 185.TT60 Bow Thruster

ST6000 Autopilot 15" Flat Screen TC with DVD Raytheon ST290 Display with Repeater  
Raytheon RL70CRC 7" Radar/Plotter at Helm w/ GPS & 2KW Radome Edson 3.5" Radar Mast with Antenna bracket

Staysail with Runners Rod vang Spinnaker halyard, Forespar T 125 Car and Tagline System, padeyes mounted on toerail

Topping lift Lazy Jack Kit Full Batten Main and 135% Genoa - Doyle Harken Battcar System  
Dodger, Bimini, Connector & Wheel Cover

---

### Manufacturer Provided Description

---

The Tartan 4400 LS (Limited Series), combines the classic Tartan look with an exceptional level of comfort and class.

The raised coachroof main cabin provides the headroom and open space owners have always wanted.



The expansive galley with fine cherry cabinetry compliments the living quarters supporting extensive offshore cruising or island hopping. Along with two heads, the 4400 also has ample storage. Beneath the waterline is where the Tartan 4400 stands out from the rest in her class. The hull shape is all about upwind efficiency and downwind speed. The hull design features the same principles as all Tartans: strong performance measured in both speed and manner. The ideas and concepts that go into successful club racers have gone into the 4400 hull shape and foil. Extensive strength, durability and safety are an integral part of the 4400. Because of the thoughtful hull design, she is forgiving and easily sailed in all conditions.

---

## Tartan Design:

Since the early 1960s, Tartan Yachts has been a pioneer in many areas of yacht design and construction. Founder Charlie Britton was one of the first to build production fiberglass boats, using the wet-layup technique with polyester resin, then on to vinylester resin for the outside skins, and finally to vacuum-bagged epoxy for hulls.

Tartans have a long reputation as racer/cruisers, back to the days before the phrase had been coined. No less a designer than Sparkman & Stephens's Olin Stephens drew the lines for Tartans in the 60s and 70s. Clearly emphasizing the racer in racer/cruiser, Tartan's designer Tim Jackett has chosen to take this Tartan model down a path blazed by quite a few other builders, producing this raised deck saloon model, the 4400 LS.

Unusual perhaps to find Tartan in the role of follower, but given the wild excesses of this design trend in recent years, Jackett has been wise to sit back, watch the evolution of the concept, and then step in with a carefully considered design. As with Oyster and others who have done it right, Tartan's deck salon design manages to blend the large windows and raised roof into the sweep and flow of the deck; some builders went to extremes that brought to mind greenhouses dropped unceremoniously onto cruising decks. The 4400 LS has a sail area to displacement ratio of 18, right in the traditional Tartan sweet spot, with the club racer in mind. Not enough sail area to get you into real trouble, but enough to move swiftly through all but the lightest of winds.

The "beavertail bulb" with a draft of 5'5", accommodations inside are two staterooms, two heads. Deck hardware is from Harken; both boom and the double spreader mast are aluminum. Auxiliary power is from a Yanmar 75 hp diesel.

---

## Cruising World states:

One of the biggest advantage that the 4400 has over others in this class is an epoxy-resin and ATC Core-Cell hull that's vacuum-bagged and oven-baked, a process that produces stronger hulls that are better resistant to cyclical fatigue, water absorption, and the fiberglass print-through that plagues some polyester hulls. The resin-impregnation process ensures a consistent 65:35 glass-to-resin ratio, considerably stronger than the resin-rich polyester hulls built of traditional hand-layup techniques. Though costly for the builder, the process brings long-term value to the

owner.

With a sail area-to-displacement ratio of 18.0 and an emphasis on hull strength, payload-carrying ability (which includes 200 gallons of water and 80 gallons of fuel), and luxurious accommodations (two staterooms, two heads, and a plush main saloon), the 4400 clearly leans toward the voyaging side of the spectrum. But with a fine bow entry, a flat underbody, and sleek appendages (a beavertail keel and spade rudder), it won't disappoint longtime Tartan fans who like a turn of speed.

Tim Jackett has designed a big boat that's exciting and easy to sail without compromising cruising essentials. The boat reaches her maximum 14-foot-1-inch beam just aft of the mast and carries much of it to the stern. The result is a very roomy and well-protected cockpit. At anchor, five adults can eat around the fold-out cockpit table, and in a slick touch of extravagance, an electric ram lowers the through-transom swim platform for an easy dash to the water or dinghy.

Once the sails are set, the cockpit affords maximum control. The double-ended mainsheet leads through a traveler set forward of the companionway, then back to self-tailing Harken 42 winches mounted port and starboard on the cockpit coaming. Immediately aft of these are two Harken 56s for trimming the jib sheets. The convenient setup puts the helmsman within an arm's length of all sheets as he sits on the leeward rail on either tack. The main halyard, reefing lines, and the traveler controls lead on the cabin top to sheet stoppers and Harken 42s beside the companionway.

---

## Main Salon

The raised main salon is light and bright. To port, there is a large curved settee upholstered in blue leather with a varnished, drop leaf, solid cherry table with center storage bin and two dovetail drawers. Ample storage (cherry cabinets with ventilated raised cherry panel doors and open shelving) is outboard of the seat backs. The entertainment center, featuring a flush-mounted flat screen TV, is opposite the settee lounge area.

To starboard is the generous, forward-facing navigator's station with chart table with drawers under, lockers and space for extensive electronics and it can double as your office.

---

## STATEROOMS

The forward master stateroom includes a centerline pedestal queen-sized berth with storage under, extensive storage lockers, 4 drawers, a hanging locker, tongue and groove solid cherry

hull ceilings, and private access to the forward head. The aft guest stateroom, accessed to the starboard of the companionway has a queen-sized berth with storage under, a hanging locker, bureau and shelves.

---

## Heads

Two heads -- one forward en-suite for the forward stateroom it has a separate shower stall with Plexiglass enclosure containing molded seat, vanity and sink. The day head is aft of mid-ship and to the port of the companionway, with shower, vanity and sink. Both have VacuFlush toilets with macerators and 24 gallon holding tanks with deck top access for pumpouts. Countertops are solid surface Granicote with integral sinks. There is ample storage in upper vanities and under-sink utility storage, accessed via raised panel hardwood cherry doors. Showers drain to separate sumps w/ automatic electric pumps.

---

## Galley & Plumbing

- Four-burner Force 10 gimbaled LPG stove with oven and broiler
- LPG sniffer with automatic shut off
- Technantics Refrigerator and Separate Freezer, molded with Granicote solid surface counter top and foam insulation. Insulated front and top load access.
- Microwave Oven
- Molded Granicote double basin sink with premium marine grade galley
- Granicote solid surface galley countertops
- Storage under galley sink through ventilated raised panel cherry doors
- Galley trash bin
- Cherry faced, dovetailed cutlery drawers
- Cherry faced cabinetry with raised panel access doors
- Hot and cold pressure water with easy service access to pump and plumbing
- Freshwater plumbing features polyethylene tubing and Whale mechanical fittings
- All below water hose connections are double stainless steel clamped for added security
- Premium marine grade hoses used throughout
- 200 gallons (757.08 l) of freshwater tankage with distribution manifold
- Forespar Marelon thru-hull fittings throughout, UL approved and corrosion free

---

## Private Reserve is a turnkey timeless classic.

"PRIVATE RESERVE" Combines the classic Tartan look with an exceptionally high level of style, comfort and class.

The raised coachroof main cabin provides the headroom and open space you have always wanted.

The expansive, all inclusive galley compliments the living quarters supporting extensive offshore cruising and/or island hopping.

Beneath the waterline is where the Tartan 4400 stands out from the rest in her class. The hull shape is all about upwind efficiency and downwind speed. The hull design features the same principles as all Tartans: strong performance measured in both speed and manner.

The ideas and concepts that go into successful club racers have gone into the 4400 hull shape and foil. She sails fast and sturdy!

The Tartan 4400 has won many awards including Cruising World's Boat of the Year! You will enjoy her modern design with the classic quality construction Tartan has incorporated into the build.

Extensive strength, durability and safety are an integral part of the 4400.

Because of the thoughtful hull design, she is forgiving and easily sailed in all conditions. Safe and a pleasure to sail.

"Private Reserve" is truly a turnkey classic.

## Specifications

Builder..... Fairport Yacht

Designer..... Tim Jakkett

LOA..... 44' 0" LWL..... 37' 6"

Beam..... 14' 1" Draft..... 5' 6"

Displacement..... 24,000 lbs Ballast..... 9,000 lbs Sail

Area ..... 943 sq ft. Sail Area/Displacement..... 18

I..... 58' 0" J..... 16' 6"

P..... 51' 7" E..... 18' 0" Bridge

clearance..... 63' 0" Deck..... White Sand

Steering..... Wheel

Keel..... Beavertail Rudder..... Spade

Fuel..... 80 gal Water..... 200 gal Hot

Water..... 12 gal Holding Tanks..... 2x 24 gal Propane

(LPG)..... 2 x 11lb tanks

## Exclusions

Owner's personal belongings.

---

## Disclaimer

---

The Company offers the details of this vessel or yacht in good faith but cannot guarantee or warrant the accuracy of this information nor warrant the condition of the vessel. A buyer should instruct his representatives, agents, or his surveyors, to investigate such details as the buyer desires validated. This vessel or yacht is offered subject to prior sale, price change, or withdrawal without notice.

# PHOTOS

**30 At dock side**



**2 Aft Starboard**



**4 Starboard Profile - 2**



**1 Starboard Profile**



**5 At dockside - 2**



**6 At dockside -3**





**7 At dockside - 4**



**8 At dock side - 5**



**9 Helm - 2**



**9 Helm - 2**



**11 Helm - 3**



**12 Helm - 4**



**13 Companionway**



**14 Salon looking forward**



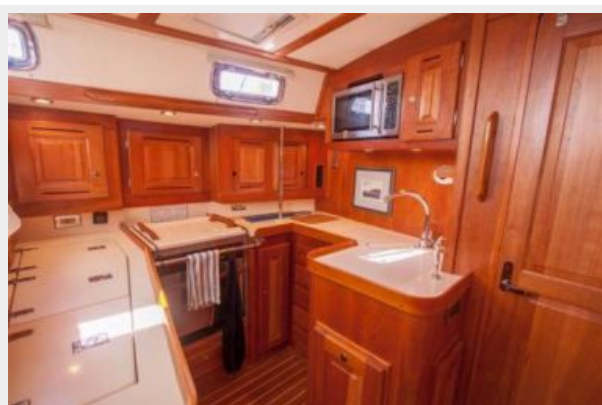
**15 Salon looking forward - 2**



**16 Salon looking Port**



**17 Galley open and bright to the Port - One step down**



**18 Vee Berth looking aft and Starboard**





**19 Forward Berth Island Queen - Lots of storage**



**20 Master head looking aft and to Starboard - Lots of room**



**21 Master head vanity and storage**



**22 Salon looking aft**



**23 Salon looking aft and Starboard**



**24 Navigation Center to Starboard**



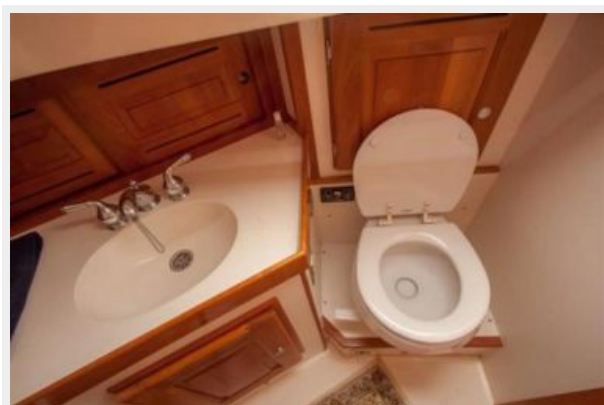
**25 Midship Head - Portside**



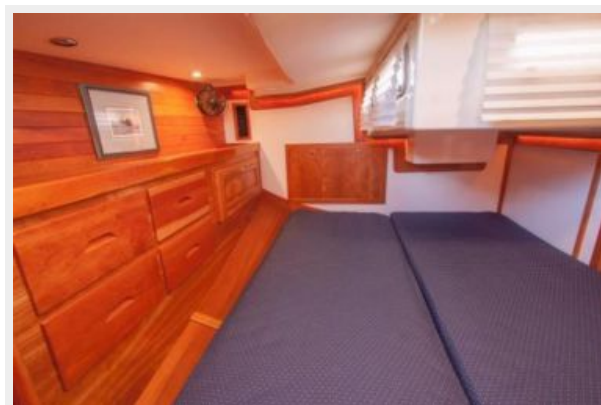
**26 Midship Head - 2**



**27 Midship Head - 3**



**28 Quarter Berth Starboard of the Companionway**



**29 Quarter Berth Starboard of the Companionway**



# CONTACTS

---

Andrey Shestakov, leading yacht broker of the sales department of Shestakov Yacht Sales Inc. Shestakov Yacht Sales Inc., the official representative of the Miami/Fort Lauderdale FL headquarters.

## Contact details

---

Email: **andrey@shestakovyachtsales.com**

Web: [shestakovyachtsales.com/en/](http://shestakovyachtsales.com/en/)

## Telephones

---

USA: **+1(954)274-4435**

## Office hours

---

Monday – Saturday: **9:00 - 21:00 EDT**

Sunday: **closed**

## Address

---



Harbour Towne Marina, 850 NE 3rd St,  
STE 213, Dania, FL 33004