

## MAEGAN — OYSTER MARINE LTD



**Builder:** OYSTER MARINE LTD

**LOA:** 82' 6" (25.15m)

**Year Built:** 2015

**Beam:** 20' 8" (6.30m)

**Model:** Deck Saloon

**Price:** PRICE ON APPLICATION

**Location:** Spain

Our experienced yacht broker, Andrey Shestakov, will help you choose and buy a yacht that best suits your needs **Maegan — OYSTER MARINE LTD** from our catalogue. Presently, at Shestakov Yacht Sales Inc., we have a wide variety of yachts available on our sale's list. We also work in close contact with all the big yacht manufacturers from all over the world.

If you would like to buy a yacht **Maegan — OYSTER MARINE LTD** or would like help answering any questions concerning purchasing, selling or chartering a yacht, please call **+1(954)274-4435**

---

# TABLE OF CONTENTS

---

TABLE OF CONTENTS	2
SPECIFICATIONS	3
Overview	3
Basic Information	3
Dimensions	3
Speed, Capacities and Weight	3
Accommodations	4
Hull and Deck Information	4
Engine Information	4
DETAILED INFORMATION	5
Specification	5
Exclusions	33
Disclaimer	33
PHOTOS	35
CONTACTS	40
Contact details	40
Telephones	40
Office hours	40
Address	40

---

# SPECIFICATIONS

---

## Overview

---

*Maegan* is Hull number 3 of the incredibly successful 825 built by Oyster in Southampton, UK. Winner of the 2016 International Yacht & Aviation Sailing Yacht Interior Design Award, *Maegan* boasts a décor that is light and contemporary, featuring limed oak and large expanses of white panelling accented with Walnut detail. Having won her class at the Palma Superyacht Regatta in 2015 and coming in second at the Loro Piana Caribbean Superyacht Regatta in 2016 she has shown her ability to compete on the race course. Her use to date has been a mix of successful charter, regatta sailing and family cruising. Her interior offers Superyacht standard accommodation (boasting four VIP cabins en suite) and adaptability to meet the demanding requirements of multiple use (crew accommodation forward with separate access). *Maegan* is in spectacular order and can easily be handled by a crew of two when running privately thanks to her sail plan and handling systems. *Maegan* is wintering in Palma and available for inspection at short notice.

## Basic Information

---

**Category:** Deck Saloon

**Sub Category:** Cruising Sailboat

**Model Year:** 2015

**Year Built:** 2015

**Country:** Spain

## Dimensions

---

**LOA:** 82' 6" (25.15m)

**LWL:** 72' 1" (21.97m)

**Beam:** 20' 8" (6.30m)

## Speed, Capacities and Weight

---

**Displacement:** 123458.86672 Pounds

**Water Capacity:** 528.344104 Gallons

**Fuel Capacity:** 792.516156 Gallons

---

## Accommodations

---

**Total Cabins:** 1

**Total Berths:** 11

**Sleeps:** 11

**Total Heads:** 5

---

## Hull and Deck Information

---

**Hull Material:** GRP

**Hull Finish:** Fiberglass

---

## Engine Information

---

**Manufacturer:** Cummins

**Model:** QSB 5.9-305 MCD

**Engine Type:** Inboard

**Fuel Type:** Diesel

---

# DETAILED INFORMATION

---

## Specification

---

### HULL NUMBER

Oyster 825/03.

### HULL CONSTRUCTION

A special NPG gelcoat laminated using a combination of Vinylester and polyester resins.

The GRP lay-up specification is calculated to meet and exceed Det Norske Veritas (DNV) – High Speed and Light Craft Rule with bulkheads made of marine ply and foam-core composites.

### HULL FINISH

White hull with *Taupe* cove and waterlines.

### DECK CONSTRUCTION

Moulded in GRP with a PVC foam cored structure for strength and insulation.

In load bearing areas the core is replaced with plywood for additional strength, and all load bearing fittings have backing plates.

### DECK FINISH

Teak laid decks, rolled edged bulwark with clean GRP finish.

Weather deck, cockpit seats and sole areas are finished with quarter-sawn teak planking with no visible fastenings.

Stanchions and cleats mounted on the bulwark.

Scupper drains installed along deck edge.

### KEEL

---

High performance bulb (HPB) with standard draft keel.

## **RUDDER**

Twin rudders with substantial GRP foam-filled blades that are bonded to composite rudder stocks.

## **STERN DESIGN**

*Hydraulic transom flap/swimming platform.*

*Wide transom steps with teak treads and LED rope lighting.*

## **EURCD**

At over 24m length overall the Oyster 825 falls outside the scope of the EURCD, however the hull design and structure for this vessel have been designed using the Det Norske Veritas (DNV) – High Speed and Light Craft Rule.

## **CHARTER CODING**

*Built to MCA Category 2 with all associated safety equipment fitted.*

## **ANCHOR**

66kg *stainless steel* CQR main anchor plus 100m of 14mm calibrated, *stainless steel* chain.

*Kedge anchor and 10m of 14mm chain, plus 105m of 18mm Octoplait line.*

## **WINDLASS**

Lewmar V8 vertical, chain gypsy, hydraulic, 2-way anchor windlass under deck and within the anchor chain locker. Operated by adjacent foot switch controls.

Wired handheld remote on *spiral cable for operation of windlass with socket in anchor locker.*

## DECK ACCESS

*Removable folding stainless steel side boarding ladder with teak treads that can be used port and starboard with bulwark fittings to secure. Guard wires with pelican hooks.*

Stainless steel boarding ladder at transom.

Stainless steel stern pushpit with gate for boarding.

Stainless steel crew access ladder from galley to deck.

Emergency access from aft cabin deck hatch.

Stainless steel bathing ladder.

*Besenzoni hydraulic passerelle in transom.*

## HATCHES

8 x GRP framed Solimar flush accommodation deck hatches.

2 x GRP Solimar framed flush storage area deck hatches (sail locker/lazarette).

2 x Lewmar Size 44 flush escape hatches to port and starboard aft guest cabins, below cockpit seats.

Custom acrylic main companionway powered sliding hatch system. *Short washboard to create a 300mm high sill for storm conditions (MCA compliant).*

## CANVASWORK

Fold-down companionway sprayhood in 'Taupe' Sunbrella PLUS with leather covered stainless steel grab rail at aft end. Hood incorporates see-through panels in its forward portion and is sized to give protection to the companionway and forward occupants of the cockpit.

Biminis in 'Taupe' Sunbrella PLUS fabric. One to cover the main guest cockpit and one over helm positions.

Covers for cockpit table, pedestals and steering wheels in 'Taupe' Sunbrella PLUS fabric.

Cockpit, helm and pushpit seat cushions in 'Taupe' Sunbrella PLUS fabric.

Winch covers in 'Taupe' Sunbrella PLUS fabric.

---

## DECK PLUMBING

Hot and cold freshwater deckshower located in a step locker within the transom.

*Freshwater outlet on deck at the bow, including hose for freshwater wash down.*

*Second freshwater outlet in the cockpit.*

## COCKPIT

Walk-through teak-laid cockpit over 3m long.

Excellent access from the companionway to the helm positions and side decks.

Stainless steel drinks holders to pedestals and at helm seats.

## COCKPIT TABLE

To port is a varnished cockpit table with seating on three sides, folding leaves, insulated and refrigerated GRP box.

Table cover incorporating mesh storage pockets.

## STEERING

Whitlock Mamba rod and gearbox system.

Twin GRP steering pedestals.

Twin carbon wheels 1.2m diameter.

## GENERAL

Stainless steel pulpit and pushpit with gate for boarding.

Teak slatted seats port and starboard with stowage for two (hydrostatic release) liferafts underneath the seats.

Stainless steel stemhead fitting with twin rollers, one roller designed to stow a 66kg CQR anchor.

Stainless steel grabrails on deck saloon cabin top.



Pair of stainless steel and GRP upholstered backrests fitted at the helm positions.

5 pairs of 400mm stainless steel 'pop-up' mooring cleats with chafe strips to deck edges.

Pair of aft stainless steel fairleads near transom bulwark.

*Port and starboard bulwark tread plates at side gateways engraved with yacht's name.*

Stainless steel halyard 'parking' rail in sail locker.

Lazarette locker Solimar flush hatch fitted with twin stainless steel gas struts.

*Forced air intakes to halyard bins either side of the mast.*

*Stowage for Seadoo underwater propulsion unit, wake board, water skis and kite board in lazarette.*

*Stainless steel and teak chocks for tender on foredeck.*

*Stainless steel fishing rod holders, port and starboard on pushpit.*

## **MAST and RIGGING**

Sloop rig.

*Halls Spars carbon white mast and in-boom hydraulic furling, includes CRW main halyard winch.*

*In-boom preventer with sheave at aft end of boom.*

Removable storm jib stay.

*Hall Spars SCR rod rigging with Reckmann carbon foils for blade jib.*

*All running rigging white.*

*2 x Navtec A260 LE 030 hydraulic backstay tensioners with mechanical lock-off.*

*1 x Navtec A850 VC 060 hydraulic vang with positive support.*

*Hydraulic halyard tensioner for headsail, deck buttons at mast base for adjustment.*

*Commander upgraded to include push/pull vang.*

*No-Strike ion dissipater at masthead.*

*Lightning wand in case of strike connected to heavy-duty bonding cable full length of mast to keel.*

## **MAINSAIL FURLING**

*Hall Spars in-boom furling.*

## **HEADSAIL FURLING**

*Reckmann CZ hydraulic furler fitted into bowsprit (excluding sail) with TS12 top swivel.*

## **WINCHES**

*Lewmar 3500 captive reel winch for mainsheet control.*

2 x Lewmar 88/3 SHST 3-speed, hydraulic drive, stainless steel, self-tailing primary winches.

2 x Lewmar 77/2 SHST 2-speed, hydraulic drive, stainless steel GY, self-tailing secondary winches.

1 x Lewmar 68 SHST hydraulic drive, stainless steel GY, self-tailing halyard winch.

1 x Lewmar 77 SHST hydraulic drive, stainless steel GY, self-tailing halyard winch.

*Deck switches upgraded to stainless steel Lewmar Grand Prix.*

## **SPINNAKER GEAR**

*Tender pole lift instead of spinnaker pole. (Standard length spinnaker pole track and pole lift, 1 x halyard, fore/aft guys).*

*Deck fittings and blocks for gennaker sheets, guys and pair of pole downhauls.*

*Spinlock floating clutch block supply to unload Asymmetric tack line from winch.*

## **SAILS**

*Manufacturer – North Sails.*

- *3Di 760 sails – in-boom mainsail, furling blade jib. Includes C tech carbon battens.*
- *Storm jib hanked, day-glo orange, SRP 105.*

- *Additional 3Di 760 hanked staysail for removable stay.*
- *Code Zero RF gennaker, 50-60% girth CN18HBFC5 for CZ furler on 2:1 halyard.*
- *Carbon torsion rod for Code Zero sail with 2:1 swivel at top.*
- *2 x asymmetric gennaker G2 – Norlon.*
- *Oxley snuffer for asymmetric gennaker.*
- *Rolling furling spinnaker staysail.*

## GENERAL

Six to seven guest berths (*pullman berth on inboard bulkhead in guest port cabin*) and four crew in five cabins, excluding the saloon. All berths, including doubles, are counted as sea berths with doubles having split mattresses to allow a central lee- cloth to provide the necessary support and separation.

Interior joinery finished in horizontal grain, *quarter-sawn oak with limed finish.*

Designed to be modern and coordinated, whilst remaining practical and durable at sea. Essential features include sculpted fiddles and grabrails, 'shadow-gap' joints between panels and flush catches for lockers and drawers.

Solid, shaped oak and stainless steel grab handles.

Solid 'framed' styled doors with laid veneers and soft-close seals.

Soleboards in *dark walnut, 120mm plank with satin finish varnish.*

*Druggets for soleboards.*

*Kick recesses and mid-height banding in walnut with horizontal grain and satin finish.*

Upholstered and padded panels for headboards, bulkheads, seating and berth sides.

Rolled edge, vinyl-covered mouldings for the saloon deck/coachroof carlin line.

Headlining in off-white vinyl unless stated otherwise.

Crew covers for upper and lower saloon.

Surfaces in galley and heads in '*Alpine Shimmer 8206*' Avonite.

Wall finish to all heads in *Arpa 2516 Madreperia VG PXL.*

All upper timber lockers in heads *painted white RAL 9003.*

Quality Hansgrohe mixer taps and matching shower hardware in all heads.

All heads have *Dometic Masterflush toilet systems and heated towel rails.*

*Forced air ventilation fitted to all cabins and WC/shower areas.*

*Electrically operated Oceanair Skysol Duette blinds on saloon windows and hullports and all cabin hullports.*

Oceanair skyscreens to all deck hatches.

Flyscreens to all opening hull and coachroof ports.

*Padded covers for saloon tables for closed position.*

*Torches with stowage in each cabin (MCA compliant).*

## **SAIL LOCKER**

*Stainless steel long hanging rails to starboard under deck.*

*Watertight door from crew cabin to sail locker.*

## **FORWARD PORT TWIN CREW CABIN**

Twin bunks to port, hanging locker and en suite head with integral shower.

*Miele* washing machine and separate tumble dryer.

## **EN SUITE HEAD/SHOWER**

Countertop in 'Alpine Shimmer 8206' Avonite, including vertical backsplash.

Wet room with shower drain under Avonite flooring with non-slip strips.

## **STARBOARD MIDSHIP CAPTAIN'S DOUBLE CABIN**

Large captain's double cabin with hanging locker and en suite head with integral shower.

*Single small horizontal hullport.*

*Digital 4-brick safe.*

## EN SUITE HEAD/SHOWER

Countertop in *'Alpine Shimmer 8206'* Avonite, including shower floor and vertical backsplash.

Flooring in *Flexiteek planking 'Standard' White Sika, sealed with two coats Ronseal.*

## GALLEY

Worktops in easy wipe clean *'Alpine Shimmer 8206'* Avonite.

Galley joinery above countertop height is *painted white (colour RAL 9003).*

*Nespresso freestanding coffee machine on slide out shelf from aft outboard countertop locker.*

*Upgrade to Hansgrohe Talis S single lever kitchen mixer tap with pull out spray.*

*Seagull purification filter with separate tap at galley sink.*

*Sliding bulkhead section at aft end and galley door pocketed into mast box.*

## SINKS

Stainless steel with quality Hansgrohe mixer taps.

## BOILING WATER TAP

*Quooker hot water boiler and brushed nickel tap at galley sink.*

## COOKER/HOB

*Miele electric oven and ceramic induction hob in custom stainless steel gimbals.*

*Alpes Inox cooker hood with light and extractor fan.*

## STEAM OVEN

*Miele DG6030 steam oven in upper inboard locker.*

## REFRIGERATOR/FREEZER

*Custom built Frigoboat double fridge unit with single freezer unit.*

*Refrigerated vegetable drawer.*

## DISHWASHER

*Miele G4280Vi full-size dishwasher under inboard counter.*

## WASHER

*Miele W5748 SS washing machine located in forward crew cabin.*

## DRYER

*Miele T8828S tumble dryer located in forward crew cabin.*

## ICEMAKER

*U-line C029 drinks fridge and icemaker in galley.*

## NAVIGATION AREA

Navigation table on starboard side of forward companionway with provision for the stowage of Admiralty size, half-folded charts.

Ample stowage for Almanacs, navigational books, etc.

*'Aquamarine' pure white leather covered Oyster custom stainless steel navigation chair with backrest.*

Instrument panels in *limed oak*.

## ENGINE ROOM

Main access to the engine room is via a door from the galley area forward of the saloon.

*Engine space can be closed down in event of fire.*

The engine room is built of sound insulating plywood, mineral wool and the surfaces are faced with white painted sound absorbing aluminium panels.

All access panels are fitted with rubber sealing strips to minimise noise and are secured by positive catches.

220V and 24V lighting and extractor fans ducted to the exterior.

Heavy-duty air intake system provides a constant through-flow of air.

An automatic and manual fire extinguisher is fitted to MCA standard with remote indicator light through Skyship system.

## **SALOON**

Access to the saloon from the cockpit is via a Falcon sliding, smoked glazed access system, *walnut* steps and oval stainless steel handrails.

*Warm white strip lighting* under each companionway step and *central red light* above three steps for night vision.

The deck saloon is extremely light and airy with nine windows. There are also six vertical non-opening hullports, three each side. These hullports contribute to the great feeling of light and space with a seascape vista whilst at anchor.

A saloon table to port has two lockers located in its base for bottle stowage. It has a veneered top panel and solid timber edging. The tabletop folds or expands to form either an oblong dining table or a smaller occasional table.

Seating in the saloon is upholstered in *'Aquamarine' pure white Leather*.

All central saloon headlining contrast panels finished in *Magilite Prestige Fawn*.

Aft passageway bulkheads *painted white RAL 9003 with limed oak skirting and Magilite Prestige Fawn for the first metre from the steps*.

Bulkhead painted to match Magilite.

Accent rope lighting recessed behind each side of headlining.

## **PORT DOUBLE GUEST CABIN**

Hanging locker with ample drawers under twin lower/double berth, en suite head and shower.

Headboard/bedside mattress panels *in Zimmer and Rhode Memo 10349 885.*

*Sprung mattresses.*

*Twin cabin convertible into a double.*

*Pullman berth on inboard bulkhead.*

*Leather finish to bedside table top.*

Hull window linings *in Magilite Prestige Fawn.*

## **EN SUITE HEAD/SHOWER**

Countertop in *'Alpine Shimmer 8206'* Avonite, including shower floor and vertical backsplash.

*Manual white Skysol Duette hullport Venetian blind.*

Flooring in *Flexiteek planking 'Standard' white Sika, sealed with two coats Ronseal.*

## **STARBOARD DOUBLE GUEST CABIN**

Hanging locker with ample drawers under twin lower berths, en suite head and shower.

*Full-length mirror on inside of cabin door.*

Headboard/bedside mattress panels *in Zimmer and Rhode Memo 10349 885.*

*Sprung mattress.*

Hull window linings *in Magilite Prestige Fawn.*

## **EN SUITE HEAD/SHOWER**

Countertop in *'Alpine Shimmer 8206'* Avonite, including shower floor and vertical backsplash.

*Manual white Skysol Duette hullport Venetian blind.*

*Heads taps Hansgrohe Axor Uno 2 single lever basin mixer with plate and long spout, wall mounted in brushed nickel finish.*

## **OWNER'S STATEROOM**



The aft cabin boasts six vertical 'seascape' windows, three on each side, allowing for a light filled cabin.

Configured with a double berth offset from the centreline, a settee, desk/dressing table with mirror on underside of lid and hanging locker.

*Berth widened by 1600mm with sprung mattress.*

Headboard full beam fabric in *Zimmer and Rhode Memo 10349 885*.

Forward upper bulkhead panels *painted RAL 9003*.

Sofa in *white 'Aquamarine' pure white leather*.

Abundant drawer and locker space.

Full-length mirror fitted to back of en-suite door.

Access to the en suite aft toilet and shower stall is located forward to port.

TV fitted onto the bulkhead.

Emergency access ladder provided for port overhead hatch.

Hull window linings in *Magilite Prestige Fawn*.

*Electric remote control roman blinds, full width of hullport recess.*

*Digital 4-brick safe.*

## **EN SUITE HEAD/SHOWER**

Countertop in *'Alpine Shimmer 8206' Avonite*, including *shower floor, shower control standoff panel and vertical backsplash*.

Flooring in *Flexiteek planking 'Standard' white Sika, sealed with two coats Ronseal*.

Bulkhead upper panels *painted white RAL 9003*.

Wall finish in *Arpa 2516 Madreperia VG PXL*.

*Upholstered cube as vanity seat in 'Aquamarine' pure white leather.*

Hullport and headlining in *Magilite Prestige Fawn*.

*Manual white Skysol Duette hullport Venetian blind.*

Tap and shower furniture *upgraded to Hansgrohe stainless steel Optic finish*.

Hansgrohe shower pipe *CROMA 160 HS*.

Heads taps *Hansgrohe Axor Uno 2 single lever basin mixer with plate and long spout, wall mounted in brushed nickel finish*.

## **AUDIO VISUAL SYSTEMS**

### **FORWARD PORT TWIN CREW CABIN**

*1 x 7" touch panel.*

*Pair of JL audio speakers in headlining.*

### **STARBOARD MIDSHIP CAPTAIN'S DOUBLE CABIN**

*22" TV.*

*Control 4 HC250 processor with remote control.*

*Wyrestorm HDMI receiver.*

*Pair of JL audio speakers in headlining.*

### **GALLEY**

*1 x 7" touch panel.*

*Pair of JL audio speakers in headlining.*

### **SALOON**

*32" TV on electric lift starboard side.*

*Control 4 HC250 processor with remote control.*

*Wyrestorm HDMI receiver.*

*Kaleidescape M700 vault (for 320 Blu-Ray discs).*

*2 x Kaleidescape M300 players.*

*5 x Sonance headlining speakers VP62R.*

*Subwoofer.*

*Surround sound receiver.*

*1 x 7" touch panel.*

*Control 4 HC800 processor.*

*Control 4 8-zone amplifier.*

*Control 4 audio matrix.*

*3 x Control 4 wireless music bridge.*

*Wyrestorm 6x6 HDMI matrix.*

*3 x Apple TVs.*

*1 x NAS drive.*

*Status Omni directional antenna TV/FM antenna at masthead.*

#### AFT PORT TWIN GUEST CABIN

*22" TV.*

*Control 4 HC250 processor with remote control.*

*Wyrestorm HDMI receiver.*

*Pair of JL audio speakers in headlining.*

#### AFT STARBOARD DOUBLE GUEST CABIN

*22" TV.*

*Control 4 HC250 processor with remote control.*

*Wyrestorm HDMI receiver.*

*Pair of JL audio speakers in headlining.*

#### OWNER'S STATEROOM

*40" TV Samsung - Freeview HD TV.*

*Control 4 HC250 processor with remote control.*

*Wyrestorm HDMI receiver.*

*5 x Sonance headlining speakers VP62R.*

*Subwoofer.*

*1 x Surround sound amplifier.*

## COCKPIT AND DECK

*4 x Bose 131 cockpit speakers.*

## COMPUTER SYSTEM AT NAVIGATION STATION

*Raymarine Glass Bridge 19" touchscreen linked to Ray Bus.*

*Vasari mini PC 16gb RAM 256gb SSD, Windows 7 Ultimate OS, Logitech wireless keyboard and mouse.*

*HP portable printer/scanner.*

*Ethernet connections for VSAT and BGAN.*

*Software: MaxSea Nav, Navtex, Sat Email and Antivirus.*

*Victron DC/DC filter 12V supply – clean power.*

*'Skyship' AV/lighting/blinds integrated control system operated via touchscreen technology.*

## ENGINE

Single Cummins turbo-charged QSB5.9-305 MCD diesel engine of 227kW (305Hp) at 2600rpm. Twin Disc MG 5075A gearbox with a reduction of 2.88:1 and incorporates a 7-degree down angle.

Reverso electric oil change pump with manifold and four takeoffs, one from each generator, one from the engine and one from the gearbox.

## **ENGINE HOURS**

Approximately 1,977 at October 2017.

## **PROPELLER**

32" Brunton Varifold 4-bladed folding propeller.

## **ROPE CUTTER**

Ambassador rope cutter on prop shaft and coat shaft, prop with Propspeed.

## **ALTERNATORS**

Twin alternators on the engine: 70 Amp alternator and Mastervolt 150 Amp alternator.

## **GENERATOR**

Onan MDKBT e-QD 22.5kW generator 50Hz 220V.

*Onan MDKBN e-QD 11.0kW 50Hz 220V second generator.*

## **GENERATOR HOURS**

22.5kW - approximately 2,030 at October 2017.

11kW - approximately 2,132 at October 2017.

## **BOWTHRUSTER**

Bowthruster *Sleipner retractable 24V DC.*

Sternthruster *Sleipner retractable.*

## **STEERING SYSTEM**

Whitlock Mamba rod and gearbox system.

## HYDRAULICS

Lewmar 800 Commander powerpack.

## AIR CONDITIONING/HEATING

220V Cruisair reverse cycle system totalling 90,000 BTUs, comprising:

4 x 16,000 BTU units.

2 x 8,000 BTU units.

1 x 10,000 BTU unit.

*Remote air handlers for aft owner's cabin, aft port and starboard guest cabins with compressors in engine room and air handlers under berths.*

*Forward cabins and saloons have self-contained Stoway units.*

*Condensate drains plumbed to peristaltic pumps and discharged overboard, not into bilge. Except engine room compressors, which extend pipes to main bilge sump.*

## ICEMAKER

*U-line C029 drinks fridge and icemaker in galley.*

## WATERMAKER

*Seafresh H2016A (276 litres per hour) with auto back flush.*

## FUEL/WATER

3,000 litres approximately (600 Imp gallons/792 US gallons) in two GRP tanks.

2,000 litres approximately (440 Imp gallons/528 US gallons) in two GRP tanks.

Shut-off valves on fuel and water tank breathers.

## TANK MONITORING

Tank monitoring system is installed and linked to all tanks, enabling the monitoring of fuel and water levels.

## HOT WATER

From two insulated tanks approximately 93 litres (20 Imp gallons/24 US gallons) heated by the engine's heat exchanger or by thermostatically-controlled 220V, 1.25kW immersion heater elements powered by the generator or dockside power. One tank serves forward areas, the other serves the aft areas.

## PRESSURISED HOT AND COLD FRESHWATER SYSTEM

Supplied by two high capacity water pumps with PEX/PBT pipework and fittings.

*Spot Zero SZ2000 reverse osmosis system in lazarette, plumbed to freshwater manifold in engine room, tank side of the pumps, to treat all shore water that is bunkered to ensure yacht always has pure softened water.*

*Shore water connection point under starboard pushpit seating.*

## BLACK WATER HOLDING TANKS

2 x central GRP 'black water' holding tanks for all 5 WCs. Each tank is configured for discharge below water or pump out.

Wema gauges.

## GREY WATER

Five grey water 'sump' tanks, each fitted with a float switch and Whale Gulper pump giving automatic evacuation of all showers and washbasins.

Galley sinks pump directly overboard via a Whale Gulper pump activated by a Vimar rocker switch.

Shared automatic discharge tank for the washing machine.

## MANIFOLD SYSTEM

Two bronze manifolds for seawater inlets to reduce through-hull fittings. One manifold dedicated to engine and generator, the other is for refrigeration, air conditioning and other equipment.

*Cathelco anode protection on main seawater inlet manifold to prevent pipe fouling. All seacocks are dezincification resistant copper alloy quarter-turn ball valves with stainless steel handles.*

Water strainers are Aquafax heavy-duty 50mm chromed bronze.

## SHIP'S SUPPLY

24V.

## RINGMAIN

Mains 220V AC circuit with 10 double, 13A, 3-pin outlet sockets located as appropriate within the layout.

## OTHER ELECTRICAL SOCKETS

*24V waterproof socket at the pedestal and anchor locker with permanent live connection for searchlight (MCA compliant).*

*1 x waterproof enclosed socket in engine room.*

*1 x waterproof enclosed socket in lazarette.*

## BATTERIES

*Domestic: Mastervolt MVSV 12 x 2V cell battery bank - 1250Ah.*

Engine start: 24V battery bank - 95Ah.

Generator start: 12V battery bank - 95Ah.

Navigation instruments: 24V battery bank - 55Ah (charged via a DC/DC converter from main battery bank).

All batteries are ventilated and positively secured against inversion in the case of a knockdown.



## BATTERY MANAGEMENT

Chargers: 3 x Mastervolt Mass 100A/24V battery chargers.

Monitors: A Masterview Easy control panel acts as a voltmeter and ammeter.

*Skyship control and monitoring system.*

Regulators.

*Emergency link between domestic 24V battery bank and engine start battery.*

## INVERTER

*Mastervolt Mass 24V/5000W sine wave inverter 230V/50Hz output from main battery bank supply with separate load group at switch panel for TVs, microwaves and frequency sensitive equipment to be operated off inverter supply.*

## SHOREPOWER

1 x 63A dockside power cable, 3-core double-insulated PVC, 23m in length.

Hubbell socket located in transom. Dockside end of cables fitted with a 3-pin, 63A plug.

*63A-32A plug and socket adaptor lead and 63A socket to bare wire adaptor lead.*

## INTERIOR LIGHTING

*All overhead lights to be Palagi – all singles except 2 x doubles in saloon and one double in corridor.*

*Dimmer to saloon overhead lighting incorporated with Skyship system.*

Strip lights and downlights in each head, as well as over the galley work surfaces. Downlight fittings in polished chrome finish.

Small reading light for each berth.

Strip lights to give soft indirect lighting in the porthole areas of the saloon, aft cabin and all guest cabins.

*LED red strip lighting on underside of galley inboard lockers, alongside 'daylight' white LED strip lighting, switched with standard red step/floor lighting in galley.*

*Low level recessed LED strip lighting under upper saloon seating kick recesses and overheads, owners and all guest cabin berths.*

Automatic lights to hanging lockers.

*Empirbus cabin lighting system for seven units.*

*All bulkhead lights Viva LED (by BEL Lighting) in brushed aluminium, except crew cabin, which has flexi-stalk reading lights.*

220V and LED 24V engine room lighting.

*Red overhead light at chart table.*

*LED strip lighting recessed behind either side of headlining in aft passageway. Skyship cabin management system with lighting automated control in saloon, mid- starboard and three aft cabins.*

## **EXTERIOR LIGHTING**

*Red over green all-round lights near masthead – optional sailing lights used in conjunction with deck navigation lights.*

*All-round red light on masthead.*

*2 x boom lights with switch for both at pedestal.*

*1 x pair of downlighters on lower spreaders, switched at pedestal.*

*3 x pairs of uplighters (one pair per spreader) switched at pedestal.*

*Bulwark LED white lights at each stanchion base fore and aft.*

LED 24V lazarette lights.

Aqua Signal 55 stern light.

Steaming/deck floodlight.

## **COMPASSES**

SIRS Marine Major 150mm diameter magnetic steering compass.

## **SAILING INSTRUMENTS**

*Raymarine i70 displays at forward end of cockpit in angled pods.*

*Raymarine i70 display in Captain's cabin*

*Raymarine i70 display in Owner's stateroom at outboard starboard hullport recess.*

*Sailmon display on aft side at port cockpit seatback.*

*'Skyship' control and monitoring system: AC/DC, chargers/inverters, generator sets, sea chest pressure and M.E. exhaust.*

## PORT PEDESTAL

*1 x Raymarine p70 pilot control.*

*2 x Raymarine i70 displays.*

*Raymarine Ray260E VHF (repeater station).*

## STARBOARD PEDESTAL

*2 x Raymarine i70 display.*

*Raymarine e125 hybrid touch radar/plotter.*

*1 x Raymarine p70 pilot control.*

## CHART TABLE

*1 x Raymarine i70 display.*

*Raymarine Ray260E VHF (main station/passive speaker).*

*Chart plotter upgraded to Raymarine Glass Bridge 19" touch screen display.*

## TRACKING SYSTEM

*Yellowbrick tracker system.*

## AIS

*Raymarine AIS 650.*

## **AUTOPILOT**

*2 x Raymarine p70 pilot controls.*

## **WINDEX**

Windex at masthead.

## **NAVTEX**

*Furuno N300 Navtex.*

## **VHF RADIO**

*1 x Raymarine Ray260E VHF (main station/passive speaker) radio at chart table.*

*1x Raymarine Ray260E VHF (repeater station) radio at port pedestal.*

*ICOM VHF (DSC) radio for eXige tender.*

*2 x portable VHF radios (kept with life-saving appliances).*

*Emergency VHF antenna.*

## **SSB RADIO**

*Copper strip laid into hull to allow for retrofit SSB.*

## **SATELLITE PHONE**

*BGAN satellite communication system linked to PC.*

*Dummy BGAN 250 dome to match opposite spreader and mounting kit.*

*BGAN 250 Satcom.*

## **PC**

*Vasari mini PC 16gb RAM 256gb SSD, Windows 7 Ultimate OS, Logitech wireless keyboard and mouse.*

## **CCTV**

*Raymarine CAM100 camera in engine room linked to all eSeries.*

*Raymarine upgraded camera on spreader to remote infrared version looking aft at passerelle.*

## **LIFERAFT**

*Ocean Safety 2 x 8-man liferafts with SOLAS B grab bags.*

*Next service due January 2020.*

## **EPIRB**

*Kannad float free EPIRB on transom.*

## **RADAR REFLECTOR**

*Echomax Active Radar transponder.*

## **BILGE PUMPS**

*Electric bilge pump in sail locker with auto/manual switch at DC panel linked to alarm.*

*Electric bilge pump in lazarette with auto/manual switch at DC panel linked to alarm.*

## **DECK SAFETY**

*2 x white OS horseshoes (with name of vessel and MMSI painted on).*

*1 x Danbuoy mounted on stern.*

*1 x buoyant line – 18m LOA.*

*14 x Spinlock DeckVests.*

*4 x parachute flares.*

*6 x red handheld flares.*

*2 x smoke signals.*

*12 x Thermal protective aids (stowed in grab bag).*

*Portable VHF radio.*

*Life saving signal tables.*

*Training manual.*

*Instruction manual – schedule of maintenance.*

Webbing jackstays.

Side deck jackstays.

MOB button.

Emergency tiller.

24m fire hose in anchor locker.

*Two pairs of Wichard padeyes and webbings for safe transit from helm to aft deck.*

*5 tie downs on dinghy.*

## **FIRE EXTINGUISHERS**

Various including automatic fire extinguisher in engine bay.

*Plus 2 x 13A/113B fire extinguishers.*

*Engine room fire extinguisher upgraded to auto and manual operation with air in/out remote shut-offs (MCA compliant).*

## **ALARMS**

*High-level float switch with audible alarm at pedestal to indicate primary bilge pump not coping or failed. Different sound to existing alarms.*

*Bilge alarm fitted in each watertight compartment.*

*Domestic (9V battery) type smoke alarm for engine room lobby, crew mess and aft passageway.*

*Smoke detectors.*

## **OTHER SAFETY FEATURES**

*Raymarine T450 thermal imaging camera mounted under lower spreader linked to all Raymarine screens.*

*Mast-mounted Marco EW3-M foghorn approved for vessels over 20m. Includes hailer handset at port pedestal (MCA compliant).*

*Jabsco Ultra saltwater wash down pump with pressure relief valve and footswitch on deck. Pump located in sail locker with outlet on deck by pushpit foot. Long 24m hose (for MCA fire pump).*

*Watertight bulkheads, doors and damage survival.*

*Engine air inlet and exits have fire flaps, which pass down flooding angle requirements. Exits at lazarette have closures.*

*Fire shutters with remote operation on inlet and outlet extraction ducts.*

## **RIB/DINGHY**

*Rib-X eXige 4.5m tender for foredeck.*

*White hull and interior mouldings.*

*Flexiteek interior.*

*Cream and off-white tubes with black rub rail trim.*

*Taupe Sunbrella Plus upholstery.*

*Stereo and two speakers.*

*Navigation lights.*

*Stainless steel removable ski pole.*

*All over cover.*

*Stainless steel removable deck chocks.*

*Tie-downs x 4 on bottom of boat.*

*Icom VHF (DSC) and lifting straps.*

*60Hp Mercury F60ELPT outboard motor.*

## **WATERSPORTS EQUIPMENT**

*Adult water-skis.*

*Child learner water-skis.*

*Wake board and bindings.*

*Ringo/tube.*

*Snorkels and fins.*

*Two inflatable paddleboards with carbon paddles.*

*Emergency diving equipment and two mini tanks.*

## **WARPS AND FENDERS**

### **CROCKERY**

Oyster customised Wedgwood bone china crockery.

### **CUTLERY**

Oyster customized Robert Welch stainless steel cutlery.

### **SAFE**

*Digital 4-Brick safe in owner's stateroom and starboard Captain's midship cabin.*

## **HEYCO MARINE TOOL KIT**



---

## ASSORTED TOOLS, SPARES AND MANUALS

NB: All personal belongings and all other items not expressly listed in the above inventory are excluded from the sale.

Viewing through Oyster Brokerage.

Inventory not yet verified by the owner.

NB: Name '*Maegan*' to be retained by the Vendor.

Draft Issue 2 (OG/OB/lh)

In this transaction we are acting as Brokers only. We are informed that this sale is not related to the Owner's business, trade or profession. Whilst every care has been taken in their preparation, the correctness of these particulars is not guaranteed. The particulars are intended only as a guide and they do not constitute a term of contract. A prospective buyer is strongly advised to check the particulars and where appropriate to have the vessel fully surveyed and inspected, sea trialled and opened up.

## Exclusions

---

Owner's personal belongings.

## Disclaimer

---

The Company offers the details of this vessel or yacht in good faith but cannot guarantee or warrant the accuracy of this information nor warrant the condition of the vessel. A buyer should instruct his representatives, agents, or his surveyors, to investigate such details as the buyer desires validated. This vessel or yacht is offered subject to prior sale, price change, or withdrawal

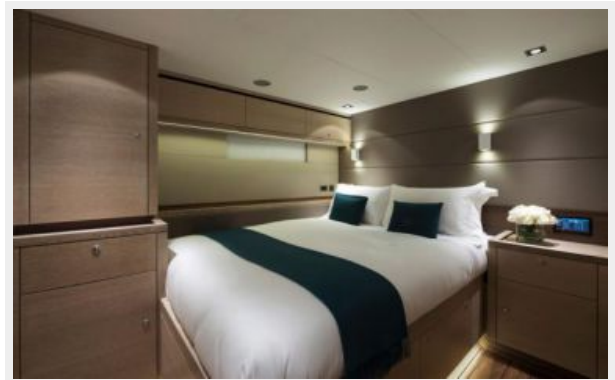
without notice.

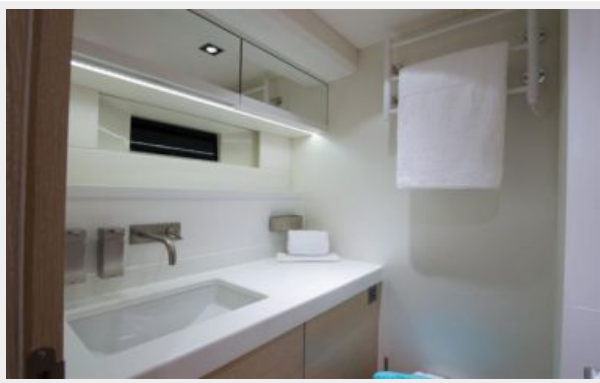
# PHOTOS











# CONTACTS

---

Andrey Shestakov, leading yacht broker of the sales department of Shestakov Yacht Sales Inc. Shestakov Yacht Sales Inc., the official representative of the Miami/Fort Lauderdale FL headquarters.

## Contact details

---

Email: [andrey@shestakovyachtsales.com](mailto:andrey@shestakovyachtsales.com)

Web: [shestakovyachtsales.com/en/](http://shestakovyachtsales.com/en/)

## Telephones

---

USA: +1(954)274-4435

## Office hours

---

Monday – Saturday: **9:00 - 21:00** EDT

Sunday: **closed**

## Address

---



Harbour Towne Marina, 850 NE 3rd St,  
STE 213, Dania, FL 33004