

## FULL MOON — HATTERAS



**Судостроитель:** HATTERAS

**Год постройки:** 1995

**Модель:** Моторная яхта

**Цена:** **ЦЕНА ЯХТЫ ПО ЗАПРОСУ**

**Местонахождение:** United States

**Длина общая:** 70' 0" (21.34m)

**Ширина:** 18' 2" (5.54m)

**Макс. осадка:** 5' 8" (1.73m)

**Крейс. скорость:** 20 Kts. (23 MPH)

**Макс. скорость:** 25 Kts. (29 MPH)

Купить **Full Moon — HATTERAS** а также выбрать подходящую вам яхту из нашего каталога яхт вам поможет опытный яхтенный брокер Андрей Шестаков. На сегодняшний день компания **Shestakov Yacht Sales Inc.** имеет большое количество яхт в собственном списке продаж, а также тесно сотрудничает со всеми крупными яхтенными производителями по всему миру.

Для того чтобы купить яхту **Full Moon — HATTERAS** а также проконсультироваться по любому вопросу связанному с покупкой, продажей, чартером яхт позвоните по телефону **+7(918)465-66-44**.

# ОГЛАВЛЕНИЕ

---

ОГЛАВЛЕНИЕ	2
ХАРАКТЕРИСТИКИ	4
Основная информация	4
Размеры	4
Скорость, вместимость и масса	4
Размещение	4
Корпус и палуба	4
Информация о двигателе	5
ПОДРОБНОЕ ОПИСАНИЕ	6
Full Moon	6
Vessel Walkthrough	6
Main Salon	7
Galley	7
Master Stateroom	8
Guest Stateroom	8
Forward Guest Stateroom	8
Port Guest Stateroom	9
Aft Deck	9
Foredeck	10
Flybridge	10
Helm and Electronics	11
Electrical	11
Engine and Mechanical	11
Broker's Remarks	12
Mechanical Disclaimer	12
Исключения	12
Отказ от ответственности	13
ФОТОГРАФИИ	14

---

КОНТАКТЫ	20
Контактная информация	20
Телефоны	20
Время работы	20
Адрес	20

# ХАРАКТЕРИСТИКИ

## Основная информация

Тип судна: Моторная яхта

Подкатегория: Кубрик

Модельный год: 1996

Год постройки: 1995

Страна: United States

Верх: Bimini Top

Кубрик: Да

## Размеры

Длина общая: 70' 0" (21.34m)

Ширина: 18' 2" (5.54m)

Макс. осадка: 5' 8" (1.73m)

## Скорость, вместимость и масса

Крейс. скорость: 20 Kts. (23 MPH)

Макс. скорость: 25 Kts. (29 MPH)

Чистый вес: 93 Pounds

Вместимость воды: 345 Gallons

Объем топливного бака: 1596 Gallons

## Размещение

Всего кают: 4

Спальные места: 8

Всего ком. состава: 4

## Корпус и палуба

Материал корпуса: Fiberglass

Материал палубы: Fiberglass

## Информация о двигателе

---

**Двигатели:** 2

**Производитель:** Detroit Diesel

**Модель:** 12V92TA

**Тип двигателя:** Inboard

---

# ПОДРОБНОЕ ОПИСАНИЕ

---

## Full Moon

---

Is a classic Cockpit Motor Yacht; roomy and comfortable. She is one of the few originals left that has not been modified or extended. Her paint is original and shines better than many new boats. **Both engines had complete major overhauls (10/17) and includes a 6-month Parts & Labor Warranty.** You can choose to run economically at displacement speeds or plane her out and cruise from 17-21 kts. She has been upgraded with state of the art Raytheon and Furuno MFD's, audio video, appliances and security/docking cameras. Full Moon has been operated and maintained by a full time professional Captain. All maintenance has been logged by advanced maintenance software. Her level of performance and economy is comparable to or better than any modern yacht of her class and tonnage.

## Vessel Walkthrough

---

Starting forward is the guest stateroom area. The forward stateroom has a double bed, a generous amount of drawers, a cedar lined locker for storage, two opening ports and an overhead opening hatch, large 32" HD flat screen TV with theater sound and a full ensuite head that doubles as a day head. Aft and down four steps is a large VIP stateroom with a queen bed, a 32" HD flat screen TV with theater sound, his and hers cedar lined hanging lockers, opening ports, large amounts of drawer space and a large ensuite head that's larger than many master state rooms, complete with jacuzzi tub. Between the two large forward staterooms is a smaller stateroom with bunks, TV and its own full ensuite head (perfect for crew or grandkids). The foyer between these forward rooms has a washer and dryer hidden behind a closet door. On the main level is the comfortable and fully equipped pilot house. There is a very large galley with full size SS appliances, ample counter space and drawers as well as a large dinette. Both the galley area and salon are full beam. The salon feels like a large comfortable living room. It features a bar and 38" HD flat screen TV with theater sound. The large comfortable L shaped sofa has valuable storage underneath. Enter the Master from a staircase in the salon. The MSR is a huge a full beam stateroom with a walk-in closet, king size bed, his and hers dressers on each side of the room, and a makeup counter for her. There is also a 38" HD flat screen TV with theater sound. The head is full beam as well, with his and hers toilets and vanities, separate shower stall and jacuzzi tub. The aft deck has a large, custom made, table for outdoor dining or entertaining. The cockpit is a great area for fishing or tender boarding. The transom has a door to access the platform. Forward of the pilot house on the bow is a large padded sun bed and a forward facing padded bench seat. There are two large deck storage boxes on each side of the bow area as well. Going up the stairs in the pilot house is the flybridge. Most say the most valuable real estate on any vessel. The flybridge is covered and has roll up sunscreens on both sides. It is fully equipped with matching Raytheon and Furuno MFD's to the pilot house, great sound system, TV, new helm chairs, wet bar and refrigerator, U shaped settee all the way around, a large sliding table to starboard for alfresco dining and a cocktail table to port. Aft of the seating area is a 14' tender with davit and an eight man auto inflating self-deploying life raft. She's a beauty and a

must see.

## Main Salon

---

The salon is on the main deck. The salon is very large, roomy and comfortable. It is very well lit and has large side and rear windows, all with blinds and valances. The large windows allow great viewing while underway or docked. The large thick L shaped sofa opens for ample storage. There is an elegant acrylic coffee table. There are also two free standing chairs, credenza and end table. The wood walls are white ash giving the main salon and very comfortable unpretentious feel.

- Air condition and heat
- Under counter ice maker
- Liquor/wine storage cabinet
- Overhead lighting
- Valance lighting
- 38" HD TV
- Satellite TV
- Theater Surround sound
- DVD
- Stereo receiver

## Galley

---

The galley opens to the salon and is great for entertaining. It is clean, light, and airy looking with white counter tops and cabinets with SS handles. There is a U-shape dinette with a matching white Corian top. There is an ample amount of storage under the dinette seats. Under and over counter cabinets provide enough storage space for the most the demanding chefs. There are full size SS appliances throughout. Large windows on both sides of galley/dinette area provide excellent natural light and great viewing.

- Air condition and heat
- Full Size SS side by side Whirlpool fridge with ice and water in door
- Full size SS Frigidaire oven and flat top cook surface.
- Ventilator hood
- SS Frigidaire microwave
- Full size SS Frigidaire dishwasher
- Custom overhead, over sink and over dinette LED lighting
- Stereo speaker's overhead
- Corian counter tops
- Corian dinette top
- Garbage disposal

---

## Master Stateroom

---

The MSR is accessed thru the salon and is aft of the engine room. It is full beam with a true king bed, very roomy with a walk-in cedar lined closet. It has two large opening ports on each side for great natural light. The ports have black out curtains and valances with lighting. Each side has built in dressers that run almost the length of the room. The starboard side has a lighted make up area with stool. The head is full beam as well and features his and her vanities and toilets on each side. There is a luxurious amount of space with great lighting and lots of storage on each side. This MSR head cannot be beat when two people are trying to get ready at the same time.

- Air condition and heat
- Walk in closet
- Rope lighting under bed and behind valances
- Make up counter
- 38" HD flat screen TV with theater sound
- Mirrored his and her vanities
- His and Hers toilets
- Jacuzzi tub and separate shower stall
- Exhaust fans
- Holding tank indicator light
- CO2 detector

---

## Guest Stateroom

---

VIP Guest stateroom is aft in the forward guest SR area. It is a large full beam stateroom with a queen bed and his and hers closets. There is one large port with black out curtain and lighted valance on the port side. It has a very large head with a jacuzzi tub shower combination.

- Reading lights
- Rope lighting under bed and valance
- 32" HD flat screen TV with theater sound
- Very large head with jacuzzi tub
- Exhaust fan
- Holding tank indicator light
- Towel and linen cabinet in head
- Air conditioned

---

## Forward Guest Stateroom

---

Forward in the guest stateroom area is the bow guest stateroom. It has a double bed and a cedar lined closet with counter space on each side of the room and drawer space under the bed.

The Bow stateroom has an ensuite head that can double as a day head.



- Air condition and heat
- Reading lights
- Rope lighting under bed and valances
- Exhaust fan
- Holding tank indicator light
- CO2 detector
- 2 spare 50' 50amp power cords under bed
- Aux anchor under bed
- Towel and linen cabinet in head

---

## Port Guest Stateroom

---

To port of the guest stateroom area is a small but very comfortable stateroom with bunk beds. It has a cedar lined closet and four drawers under the lower bunk. It has its own full ensuite head making this room perfect for crew or young children.

- Air condition and heat
- 17" flat screen TV
- Reading lights
- Exhaust fan
- Opening overhead hatch in head
- Holding tank indicator light
- Towel and linen cabinet in head

The foyer in the guest stateroom area has a washer and dryer stack unit behind a closet door. The generator room is also accessed through a floor hatch in this area.

---

## Aft Deck

---

The aft deck is wonderful. It has a table and easily seats five adults on a comfortable L shaped sofa. The sofa has ample storage underneath as well. This area is covered by the boat deck above and is well lit by overhead lighting. Views from this deck are very good since it is elevated. Go down three steps to the large cockpit that can be used for fishing. The cockpit opens to a large swim platform. Turn on the underwater lights at night and enjoy the show. Cockpit sole offers access to steering gear and other equipment. This area is invaluable for tender boarding, rinsing and cleaning gear after an outing.

- Multi-color underwater LED lighting
- Lighted Cockpit
- Canvas covering for seat cushions
- Storage below seating area

---

## Foredeck

---

The foredeck or bow area is a great place for sightseeing or sunning while slow cruising and a good gathering area. It has a large sun pad and a forward facing padded bench seat with storage beneath. This area also makes doing the business of boating easier; docking / anchoring. There is plenty of room for working the deck. Large, easy to access cleats. Conveniently located windless up/down switches. There are two large storage boxes on either side of the bow area as well. They are great storage for dock lines, cleaning supplies... These boxes offer more seating as well.

- Large accessible SS and chrome plated brass deck hardware and railings
- Foot operated windless switches
- Ample storage
- Newly rebuilt Galley Maid windless
- Approx. 300' of anchor chain
- 80 lb. galvanized plow anchor with safety cable
- 300' of 3/4 nylon rode for spare with aux anchor
- Canvas sun pad and seat cover
- Marquip stairs and ladder
- Fenders and lines
- Newly rebuilt windshield wiper arm assemblies
- Black windshield sunscreen
- Fuel, water and waste caps
- Port and starboard Glendenning cable masters

---

## Flybridge

---

The flybridge is often the most popular place on any vessel. Full Moons flybridge does not disappoint! It is large and roomy and properly equipped for navigating or entertaining. It has two new wide and comfortable adjustable helm chairs that offer great visibility and sight lines. The helm is equipped with all the proper electronics. Under the helm is a large area for more easily accessible storage. The flybridge area has had custom LED dimmable lighting installed. There is a great sound system, a removable 27" HD flat screen TV. Wet bar sink and refrigerator. There is seating for a large group and lots of storage under the seats. There is a custom-made table to starboard that can easily seat six adults. This table slides in and out approx. 6" for easier access. To port is a small cocktail table. Aft of the flybridge seating is the boat deck. This area houses a 14' RIB tender with a Yamaha outboard, davit and 8-man auto inflating/launching life raft.

- Raymarine hybrid touch E120 plotter, sounder and 72-mile radar
- Furuno Nav Net VX2 plotter, sounder and 64-mile radar
- Simrad AP24 autopilot
- Raymarine ST70 multi gauge
- Furuno GPS/WAAS Navigator GP-32

- Ritchie compass
- ACR Searchlight
- Full VDO analog instrumentation
- DDEC displays and controls
- System monitor alarms and displays
- Naiad hydraulic bow thruster with new variable speed controller
- Icom VHF IC-M604 radio
- Horizon LH5 hailer with new speakers fore and aft
- Full sunscreen side curtains that roll up or remove
- Full canvas helm cover, helm seat covers and aft seating covers
- Bimini top - New 10/17

## Helm and Electronics

---

Lower helm has entries on both sides and is the main entry for the vessel. Lower helm electronics and instrumentation duplicate flybridge helm. Ample storage cabinets and real chart drawers

- Air conditioned and heated 7 X CruisAir reverse cycle air compressors with SMX controls
- 24-volt system
- Main breaker panel, generator start switches and selector switches port side helm

## Electrical

---

The generator room is accessed from the guest area. The 2 Onan 20 kw gen sets are housed here as well as the A/C compressors and hydraulics for thruster. Both generators have been recently serviced and upgraded with new electronic fuel pumps, secondary fuel filters, hoses, belts, valve adjustment, rotor bearing inspection... This room is also another great storage area.

- 2 X 50 amp services
- 2 X Onan 20 kw sound shielded gen sets. Both with approx. 2500 hrs.
- 24-volt DC service
- 110V/220V AC service
- Dytek marine auto battery charger
- Mastervolt 24/60-3 charger back up
- 4 X 8D house and service batteries
- AC & DC lighting

## Engine and Mechanical

---

The engine room is full beam and has 6'6" head room. It is carpeted, clean, bright and well lit. There is room to get around all sides of engines and other mechanical equipment. Engines have

factory chrome packages and look fantastic. Both engines have had all hoses (fuel, oil, hydraulic...) upgraded and meticulously maintained. All equipment and breaker panels are easily accessible and properly marked. This is a well thought out and roomy engine room.

- Twin Detroit Diesel DDEC 12V92TA 1050 HP engines. **Major Overhaul - September 2017. Six Month Warranty - Parts and Labor**
- Both engines were rebuilt at 1700 hours
- Twin ZF 3.5:1 transmissions
- All engine and transmission maintenance is current (records available)
- Naiad stabilizers (recently rebuilt and seals)
- Spectra MKII 700gpd water maker
- Oil change system
- CO2 Fire extinguishing system with alarms and pull stations (75lb in eng room. 35lb in gen room)
- Dual Racor fuel filters with shut valves.
- Fuel tank selector manifold
- Power hydraulic steering
- Hydraulic dual piston trim tabs
- Twin raw water circulation pumps
- New 40-gal hot water heater
- Adjustable shaft logs

## Broker's Remarks

---

This is very nice vessel. You can appreciate her originality or customize her interior with exactly your taste instead of accepting someone else's idea of "tasteful". Full Moon has been meticulously maintained to the highest of standards using state of the art maintenance and warranty software typically used only on much larger vessels. She has more room and storage than other boats her size and performs flawlessly and efficiently. Please notice the efficient cruise at 18 kts. Burning only 60gph. Easy exterior maintenance with no bright work or teak decks with a painted hull and house. If you want to go cruise today, this is your boat!

## Mechanical Disclaimer

---

\* Engine hours are as of the date of the original listing and are a representation of what the listing broker is told by the owner and/or actual reading of the engine hour meters. The broker cannot guarantee the true hours. It is the responsibility of the purchaser and/or his agent to verify engine hours, warranties implied or otherwise and major overhauls as well as all other representations noted on the listing brochure.

## Исключения

---

---

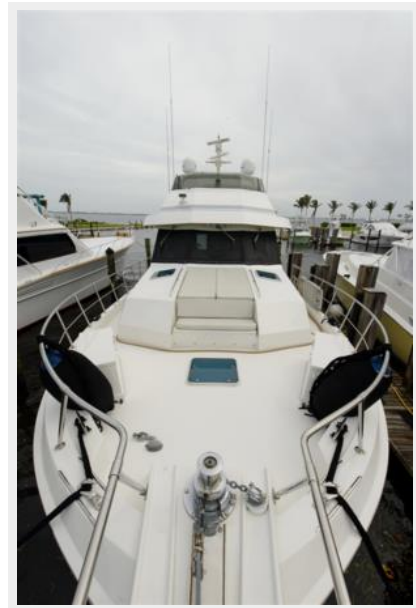
При продаже яхты исключаются личные вещи владельца.

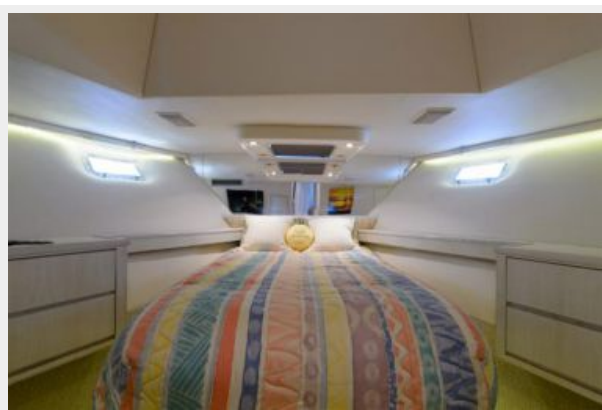
## Отказ от ответственности

---

Компания предоставляет описание судна или яхты добросовестно, но не может гарантировать точность этой информации, а также не ручается за техническое состояние. Покупатель должен проинструктировать своих агентов или оценщиков исследовать представленную информацию более подробно, по собственному желанию. Продажа судна или яхты, изменение цены или снятие с продажи будет происходить без предварительного уведомления.

# ФОТОГРАФИИ

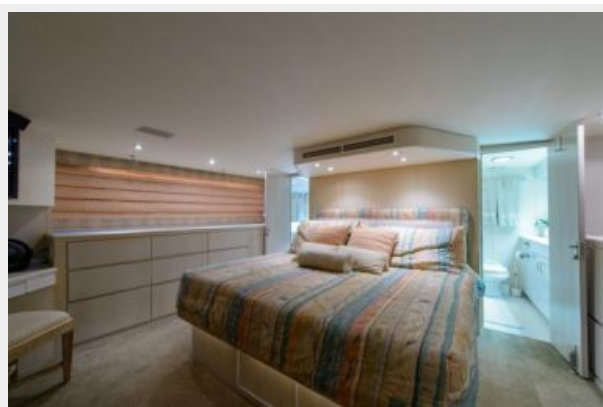
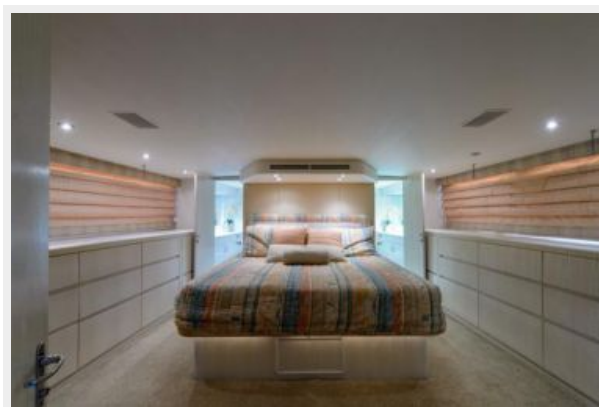


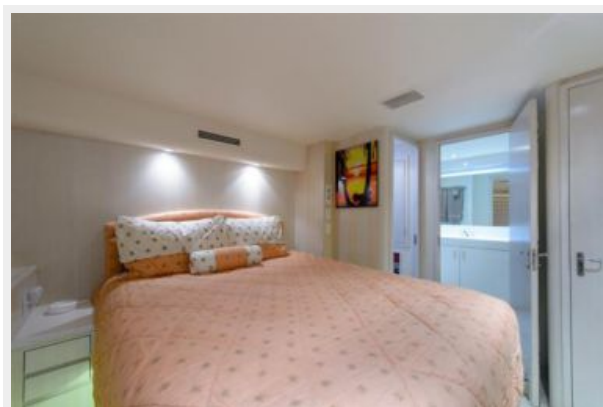
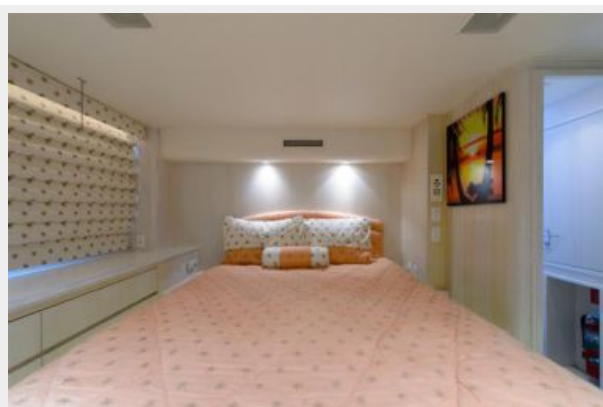
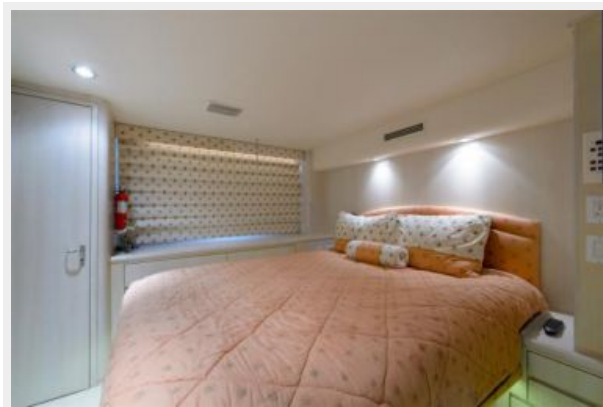












# КОНТАКТЫ

---

Андрей Шестаков (Andrey Shestakov) – ведущий яхтенный брокер отдела продаж яхт и судов компании Shestakov Yacht Sales Inc. Официальный представитель Shestakov Yacht Sales Inc. для русскоговорящих клиентов в центральном офисе компании в Майами/Форт Лодердейл/Флорида/США.

## Контактная информация

---

Email: **andrey@shestakovyachtsales.com**

Web: [shestakovyachtsales.com](http://shestakovyachtsales.com)

## Телефоны

---

Краснодарский край: **+7(918)465-66-44**

США, Майами, Флорида: **+1(954)274-4435**

## Время работы

---

Понедельник – Суббота: **9:00 - 21:00**  
EDT

Воскресенье: **Закрито**

## Адрес

---



Harbour Towne Marina, 850 NE 3rd St,  
STE 213, Dania, FL 33004