

GERMANIA NOVA — FACTORIA NAVAL DE MARIN, SPAIN



Builder: [Factoria Naval De Marin, Spain](#)

Year Built: 2011

Model: Cruising/Racing Sailboat

Price: PRICE ON APPLICATION

Location: France

LOA: 196' 11" (60.00m)

Beam: 25' 10" (7.85m)

Max Draft: 18' 1" (5.50m)

Cruise Speed: 12 Kts. (14 MPH)

Max Speed: 16 Kts. (18 MPH)

Our experienced yacht broker, Andrey Shestakov, will help you choose and buy a yacht that best suits your needs **GERMANIA NOVA — Factoria Naval De Marin, Spain** from our catalogue. Presently, at Shestakov Yacht Sales Inc., we have a wide variety of yachts available on our sale's list. We also work in close contact with all the big yacht manufacturers from all over the world.

If you would like to buy a yacht **GERMANIA NOVA — Factoria Naval De Marin, Spain** or would like help answering any questions concerning purchasing, selling or chartering a yacht, please call **+1(954)274-4435**

TABLE OF CONTENTS

TABLE OF CONTENTS	2
SPECIFICATIONS	3
Basic Information	3
Dimensions	3
Speed, Capacities and Weight	3
Accommodations	3
Hull and Deck Information	4
Engine Information	4
DETAILED INFORMATION	5
Detailed Description	5
Exclusions	11
Disclaimer	11
PHOTOS	13
CONTACTS	19
Contact details	19
Telephones	19
Office hours	19
Address	19

SPECIFICATIONS

Basic Information

Category: Cruising/Racing Sailboat

Sub Category: Schooner

Model Year: 2009

Year Built: 2011

Country: France

Dimensions

LOA: 196' 11" (60.00m)

LWL: 108' 4" (33.00m)

Beam: 25' 10" (7.85m)

Max Draft: 18' 1" (5.50m)

Speed, Capacities and Weight

Cruise Speed: 12 Kts. (14 MPH)

Cruise Speed Range: 2000

Max Speed: 16 Kts. (18 MPH)

Displacement: 615090 Pounds

Gross Tonnage: 179 Pounds

Water Capacity: 2378 Gallons

Fuel Capacity: 3302 Gallons

Fuel Consumption: 15 Gallons

Accommodations

Total Cabins: 5

Sleeps: 10

Crew Sleeps: 13

Hull and Deck Information

Hull Material: Steel

Deck Material: Teak

Hull Designer: Max Oertz

Exterior Designer: Loell, Peenamünde
SDC, Hamburg Insenaval, Vigo

Interior Designer: Matthias Oertz & Oliver
Design

Engine Information

Engines: 1

Manufacturer: Deutz

Fuel Type: Diesel

DETAILED INFORMATION

Detailed Description

1. MAIN CHARACTERISTICS

TYPE	Sailing Yacht
RIG	Schooner
HULL NO	Y0105
IMO NUMBER	9613800
CALL SIGN	V2ZM
MODEL	2009
BUILDER	Factoria Naval de Marin
NAVAL ARCHITECT	Max Oertz
EXTERIOR DESIGN	Loell, Peenamünde SDC, Hamburg Insenaval, Vigo
INTERIOR DESIGN	Matthias Oertz & Oliver Design
YEAR	2011
CONSTRUCTION	Steel Hull, Teak Decks
CLASSIFICATION	Germanischer Lloyd 100 A5 MC LY2 MCA Commercial
FLAG	Antigua & Barbuda
CREW	12
ENGINE	1 x 402Hp Deutz AG - BF6M1015MC, Diesel
GT	179 tons
DISPLACEMENT	279 tons

2. DIMENSIONS

LOA	59.74m / 196'
LOD	47.21m/ 154'10"
LWL	32.94m/ 108'7"
BEAM	7.85m / 25'9"
DRAFT	5.49m / 18'

3. SPEED & RANGE

MAXIMUM SPEED	16 knots
CRUISING SPEED	12 knots
FUEL CONSUMPTION	55 litres/hour

RANGE 2,000 nm

4. CAPACITIES

ACCOMMODATION 10 x Guests in 5 cabins

CREW 12 x Crew + Captain

1 x Captain's cabin (shared bathroom w/ Officer's Cabin)

1 x Officer's cabins with 2 berths

Fo'c'sle w/ 10 berths, 4 of them separated in a Girls cabin

2 x Heads for crew with sink

2 x Showers for crew

FUEL 12,500 litres / 3,302 US gallons

FRESH WATER 9,000 litres / 2,378 US gallons

BLACK WATER 2,500 litres / 660 US gallons

GREY WATER 3,500 litres / 925 US gallons

5. ACCOMMODATION

OWNER & GUESTS

Germania Nova sleeps 10 owners and guests in 5 staterooms aft and up to 13 crew forward. She is laid out in the typical way with the full beam owner's stateroom aft, 4 guest staterooms with double berths and en-suite bathrooms off a central corridor, the main saloon amidships, and galley, captain's cabin, officer's cabin, crew mess and crew accommodations forward. The sound proofed engine room and machinery spaces are beneath the accommodation deck with access for all service routines from the crew area.

Germania Nova's interior is bright and spacious with egg shell white painted deckheads, bulkheads, and most cabinetry, richly accented with varnished mahogany surfaces, furniture, and cabin soles. Door furniture and hardware, deckhead lights, fiddle rails, etc. are polished brass. All of which is in keeping with the Edwardian period of the yacht.

On deck, Germania Nova is completely traditional in appearance. However, appearances can be deceiving. Of her 21 bronze drum winches, 15 of them are hydraulically powered. What looks to be traditional galvanized turnbuckles, cleats and boom fittings, for instance, are bead blasted stainless steel. The gleaming varnished deck houses and skylights are teak veneered aluminium structures to save weight and ensure watertight integrity.

Since the original yacht did not have an engine, generators, watermakers, air conditioning, and all of the other systems that a modern yacht must have, weight saving was critical in Germania Nova to compensate. Much was achieved in the interior with foam cored panelling and joiner work, and more has been saved on deck. The wooden masts and booms are hollow and the gaffs are faux painted carbon fibre.

The galley is U-shaped and gives direct access to the main saloon. It is built to class with corian countertops, wood laminate flooring and has sufficient equipment.

6. MECHANICAL EQUIPMENT

MAIN ENGINE	1 x Deutz AG - BF6M1015MC, Diesel 402Hp / 300kW, with variable pitch propeller
ENGINE HOURS	As of 20 September 2017 9,287 hours
CHARGERS	Mastervolt Mass Charger
INVERTER	Mastervolt Mass Sine 24/5000 230 V AC
GENERATORS	1 x 70 kW Kohler 1 x 50 kW Kohler
EMERGENCY GENERATOR	1 x 20 kW Kohler
GENERATORS HOURS	As of 20 September 2017 Port-70 kW (17,629 hours) Stbd-50 kW (20,864 hours)
PROPELLERS	Hundestad variable pitch propeller
BOW THRUSTER	Hydraulic retractable
AIR CONDITIONING	Marine Air with air handlers on deck and 20 fan coils in the cabins, saloon, etc.
WATER MAKERS	2 x Idromer MC2J @ 130 litres/hour
SANITARY SYSTEM	Jets vaccum
WATERTIGHT DOORS	Watertight sliding door of the central bulkhead: Winel
ANCHOR WINDLASS	2 x Sets make CARRAL Neptuno hydraulic

7. SAILS AND RIGGING

The original crew of Germania would be completely familiar with the sail handling of Germania Nova if they were able to board today.

The bowsprit, masts and booms are made by *Ventis*/Netherlands from Oregon pine. The topmasts and jackyards are made from spruce, fine grain, rift cut. The gaffs are made from carbon fibre, surface painted like

wood. The original wooden ones are available for classic races. There is a spinnaker boom made from spruce in storage ashore.

Germania Nova has eight working sails built by *North* sails from Dacron and fashioned in the classic style with leather reinforced corners to maintain the period look. All are raised and sheeted using hydraulic winches, while manual winches are used for lighter work such as running backstays. The 8 working sails are the main sail, main gaff topsail, main topmast staysail, fore sail, fore top-sail, fore stay-sail, jib, jib, and jib top. In addition there are a cruising main, trysail, storm staysail (bright orange colour), spinnaker, and jackyard.

MASTS AND SPARS CONSTRUCTED AS FOLLOWS

- Main and mizzen masts are hollow and double conical laminated wood
- Topmasts are hollow and conical laminated wood
- Booms are hollow and double conical laminated wood
- Gaffs are carbon painted like wood
- Bowsprit is solid glued wood

RIGGING

- The rigging is traditional in style as close to original as possible within the GL Class rules
- The fittings in the rigging and on deck are made from glass bubble blasted stainless steel with satin finish. The style is following the original from 1908
- The winches are custom made Meissner winches, produced by Holmatro/ Netherlands. They are hydraulic driven capstan type with two and three speeds
- Sail winches by Holmatro/Meissner Types 6000 H, 400 H, 75 H, and 75
- Masts are made by Ventis, Netherlands from Oregon Pine
- Topmasts are made by Ventis, Netherlands from Spruce
- Fittings in the rigging made from glass bubble blasted stainless steel
- Standing rigging galvanised steel, parcelled and served, made by Oevelgoenner Tauwerkstatt , Germany
- Sails made by North Sails from Dacron
- Gaffs made from carbon fibre, surface painted like wood

8. COMMUNICATION & NAVIGATION EQUIPMENT

- The navigation system is integrated and centralised in the deckhouse with individual operation units installed throughout the vessel
- The system is designed and installed to the standards of the classification society with relevant documentation
- The system includes: radar, chart plotter system, full GMDSS, AIS, Navtex, Cassens and Plath compass, Zollner Typhoon, Satellite and GSM Communication, autopilot, wind indicator, rudder position, speed and depth instruments
- Repeaters are located at the helm station
- The vessel is equipped with a satellite based internet system with WiFi throughout
- Panasonic KX-DT333 telephone system throughout
- Thrane & Thrane Sailor TT3000E mini-C GMDSS System
- Thrane & Thrane Sailor System 5000 MF/HF
- Thrane & Thrane Sailor 500/250 Fleetbroadband

- Thrane & Thrane Sailor RT5020 VHF
- Furuno Marine Radar FAR-21x7
- Alphanon Alphanicourse V2 Giro Compass
- Communication is provided with WLAN throughout the boat
- Satellite Communication with Fleet Broadband
- There is a ship's computer with printer, central telephone system, GSM repeater

9. DECK

- The deck is teak laid on steel and the deckhouses are lightweight aluminium with teak wood veneer with teak framing
- An external formal dining area for up to 10 people is forward of the main helm position and has a gimballed table for comfort
- The 'back' of the bench seats can be flipped inboard or outboard

depending on the requirements of the guests

- The main deckhouse has seating areas on each outboard side
- There are also fantail cushions for sunbathing
- The ship has under water lighting at the stern and LED lighting of the bulwarks
- The ships sound system can be connected to large portable speakers for parties on deck
- The main saloon has a draft beer system

10. ENTERTAINMENT EQUIPMENT

- The vessel has a TV system able to receive satellite signals in Europe, Caribbean & the USA
- Flat screen televisions are located in the main saloon, master cabin and crew mess
- The TV in the salon is a mirror TV (switched off a mirror, switched on a TV)
- There is a sound system in all guest cabins, Captain's cabin and Officer's cabin
 - iPod connections in all cabins with radio/cd players
- The Main saloon and owner's suite have 5.1 Dolby surround sound
- Bose Lifestyle DVD System
- Bose Lifestyle V-Class Home Theatre System
- Sony CDX-H905IP
- Outside loudspeakers and amplifier: Altair MF 12
- Arcam Solo Mini in the cabins

11. GALLEY & LAUNDRY EQUIPMENT

GALLEY

- Direct steam oven
- Food waste disposer TEKA Tr 50.2
- Miele Microwave oven M8151-2

- Miele Commercial dishwasher G8050
 - Miele Ceramic induction hobs

- Miele Coffee Machine CVA 3650ST

LAUNDRY

- Miele Condenser tumble dryer PT5135C
- Miele Washing machine PW 5065
- Miele Rotary ironer HM 16-83

12. SAFETY & FIREFIGHTING

FIREFIGHTING

- Ultra Fog Fire extinguishing system in cabins
- Fire extinguishing system for Engine Room
- Fire alarm system: VIGOTRONICA

SAFETY

- RFD Beaufort MK IV Life rafts

13. TENDERS & WATERTOYS

The vessel has water sports toys sufficient for a charter yacht of this size and type. One kayak, double and mono water ski, and full diving equipment with Bauer dive compressor.

A custom built wooden annex boat is the principal means of transport for guests from the ship to shore. Built in England in 2013 and equipped with an inboard diesel engine it is a very comfortable and stable boat. The tender is CE certified.

The second boat is a rigid inflatable, make DSB, Germany, with a 115 Hp Yamaha Outboard engine. This boat is very well powered for water-skiing. The boat was acquired in 2012 and is SOLAS certified.

14. COMMENTS

OVERVIEW

Germania Nova is a replica of the famous 1908 schooner 'Germania' using identical hull lines, the same sail and deck plans, and faithful replicas of the original deck houses, skylights and companionways.

The original Germania, designed by Max Oertz, was built for Dr. Gustav Krupp, and won the 1908 Cowes Week and many other regattas except, for obvious reasons, when competing against Kaiser Wilhelm's Meteor. In 1912 she competed in 19 regattas winning 10 and coming second three times. Her racing career ended with the outbreak of the First World War and eventually she was sunk in a storm off Key Biscayne in 1930.

Germania Nova is an admirable achievement, with all of the charm and nostalgia of the Edwardian Era, combined with modern comfort and conveniences.

She is in Class and carries MCA LY2 designation.

GERMANIA NOVA provides guests the opportunity to experience a gentle, relaxing sail or by contrast; an exhilarating experience at sea. Including bowsprit, Germania is an impressive 60m in overall length, and carries 1,200m² of sail area.

GERMANIA NOVA was built as the same yard as the well-respected 55 metre Herreshoff schooner Elena who has been racing Eleonora (recreation of Westward), Adela (fully restored 55 meter schooner) and Meteor (Huisman recreation) in recent regattas. It will be a fine day to see Germania Nova on the race course with these yachts.

Germania Nova is offered for sale and the rare opportunity exists to join a very exclusive fraternity.

15. EXCLUSIONS

The name GERMANIA NOVA is reserved.

Owner's personal effects and all items not specifically shown on this listing sheet shall be excluded from the sale.

A detailed inventory list of exclusions will be provided pursuant to a purchase agreement.

Exclusions

Owner's personal belongings.

Disclaimer

The Company offers the details of this vessel or yacht in good faith but cannot guarantee or

warrant the accuracy of this information nor warrant the condition of the vessel. A buyer should instruct his representatives, agents, or his surveyors, to investigate such details as the buyer desires validated. This vessel or yacht is offered subject to prior sale, price change, or withdrawal without notice.

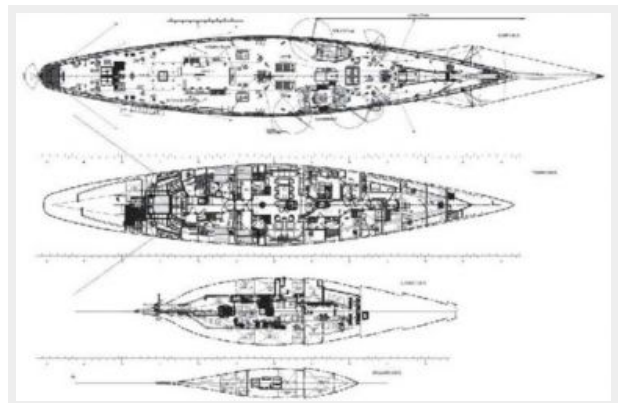
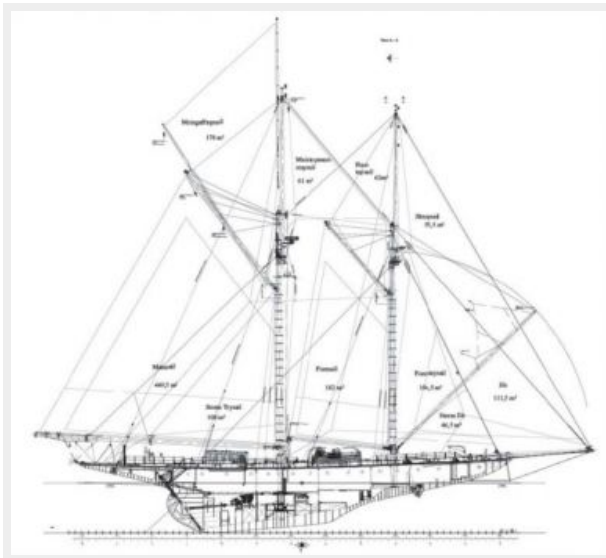
PHOTOS

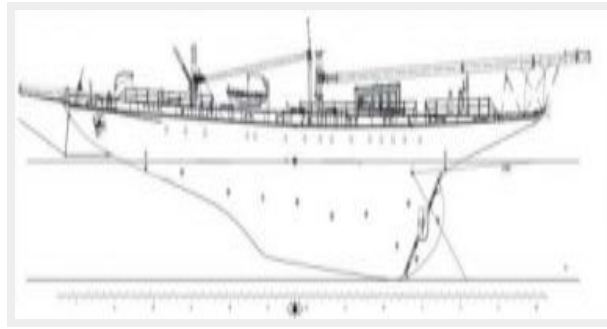












CONTACTS

Andrey Shestakov, leading yacht broker of the sales department of Shestakov Yacht Sales Inc. Shestakov Yacht Sales Inc., the official representative of the Miami/Fort Lauderdale FL headquarters.

Contact details

Email: andrey@shestakovyachtsales.com

Web: shestakovyachtsales.com/en/

Telephones

USA: +1(954)274-4435

Office hours

Monday – Saturday: **9:00 - 21:00** EDT

Sunday: **closed**

Address



Harbour Towne Marina, 850 NE 3rd St,
STE 213, Dania, FL 33004