

BLUE ABALONE — FERRETTI YACHTS



Судостроитель: FERRETTI YACHTS

Год постройки: 2015

Модель: Моторная яхта

Цена: **ЦЕНА ЯХТЫ ПО ЗАПРОСУ**

Местонахождение: Mexico

Длина общая: 69' 0" (21.03m)

Ширина: 18' 2" (5.54m)

Мин. осадка: 5' 6" (1.68m)

Макс. осадка: 5' 8" (1.73m)

Крейс. скорость: 30 Kts. (35 MPH)

Макс. скорость: 33 Kts. (38 MPH)

Купить **Blue Abalone — FERRETTI YACHTS** а также выбрать подходящую вам яхту из нашего каталога яхт вам поможет опытный яхтенный брокер Андрей Шестаков. На сегодняшний день компания **Shestakov Yacht Sales Inc.** имеет большое количество яхт в собственном списке продаж, а также тесно сотрудничает со всеми крупными яхтенными производителями по всему миру.

Для того чтобы купить яхту **Blue Abalone — FERRETTI YACHTS** а также проконсультироваться по любому вопросу связанному с покупкой, продажей, чартером яхт позвоните по телефону **+7(918)465-66-44**.

ОГЛАВЛЕНИЕ

ОГЛАВЛЕНИЕ	2
ХАРАКТЕРИСТИКИ	4
Обзор	4
Основная информация	5
Размеры	5
Скорость, вместимость и масса	5
Размещение	5
Корпус и палуба	6
Информация о двигателе	6
ПОДРОБНОЕ ОПИСАНИЕ	7
Vessel Walkthrough	7
Factory Options	7
Main Salon	8
Galley	9
Master Stateroom and Head	9
VIP Stateroom	10
Guest Stateroom	10
Crew Quarters	11
Cockpit	11
Flybridge/ Helm	13
Electrical	13
Mechanical Equipment	14
Additional Equipment	14
Engine Room	14
Safety Equipment	15
Исключения	15
Отказ от ответственности	15
ФОТОГРАФИИ	16

КОНТАКТЫ	21
Контактная информация	21
Телефоны	21
Время работы	21
Адрес	21

ХАРАКТЕРИСТИКИ

Обзор

69' 2015 Ferretti Yachts 690 "Blue Abalone"

PRICE REDUCTION!!!

The fantastic **Ferretti 690 '2015's** owner is an experienced yachtsman who has kept meticulous maintenance since new. This **Ferretti 690** is equipped with T- MTU German engines with 1268 HP, 870 hours, it has a super silent Kohler generator, four cabins plus one for the crew, hard top on the flybridge with a retractable area, and additional equipment like:

- SEAKEEPER stabilizer **\$ 95,000**
- Automated Compressor for Scuba Diving Cylinders **\$ 25,000**
- SEA RECOVERY Pro
- Watermaker 1000 gallons per day **\$ 17,176**
- FURUNO NavNet TZT 14 **\$ 10,914**
- Repeaters and Internet system onboard **\$ 8,000**
- Improvements on all Audio and Video equipment including SAVANT automation
- Kaleidescape **\$ 44,137**
- Aluminum boarding ladder **\$ 4,439**
- V-Kool film reducing infrared and ultraviolet light for **\$ 4,393**
- Underwater lights **\$ 6,548**
- Stern thruster **\$ 18,840**
- Outer curtain for stern table **\$ 3,210**
- GOST tracker and alarms **\$ 1392**
- 2 Direct TV HD DVR **\$ 500**
- Illuminated sign

As a BONUS, the owner wanted to keep the custom made AquaScan 12 'with Yamaha 40hp engine but finally accept to offer it as part of the yacht gear, **\$ 30,000** tender.

Основная информация

Тип судна: Моторная яхта	Подкатегория: Flybridge
Модельный год: 2015	Год постройки: 2015
Страна: Mexico	Верх: Hardtop
Открытая палуба мостика: Да	

Размеры

Длина общая: 69' 0" (21.03m)	Ширина: 18' 2" (5.54m)
Мин. осадка: 5' 6" (1.68m)	Макс. осадка: 5' 8" (1.73m)
Длина привального бруса: 69' 0" (21.03m)	

Скорость, вместимость и масса

Крейс. скорость: 30 Kts. (35 MPH)	Дальность на крейсерской скорости: 280
Макс. скорость: 33 Kts. (38 MPH)	Водоизмещение: 106263 Pounds
Вместимость воды: 262 Gallons	Объем топливного бака: 978 Gallons

Размещение

Всего кают: 4	Спальные места: 8
Всего ком. состава: 3	Каюты экипажа: 1
Койки экипажа: 2	Спальных мест экипажа: 2
Комм. состав экипажа: 1	

Корпус и палуба

Материал корпуса: Fiberglass

Информация о двигателе

Двигатели: 2

Производитель: MTU

Модель: V8 2000 M94

Тип двигателя: Inboard

Тип топлива: Diesel

ПОДРОБНОЕ ОПИСАНИЕ

Vessel Walkthrough

The **Ferretti 690** is a further step forward of the Ferretti Yachts fleet, characterized by the new design of outer lines, which are now sportier, with a sleeker and more dynamic profile. The wider glazing makes exteriors lighter and provides an amazing quantity of natural light to interior spaces. The interiors of the Ferretti 690, 21 meters or 69 feet long and 5.5 meters or 18 feet wide, are spacious and wisely organized, in order to exploit living areas at their best in both layouts. Volumes are notably enlarged by the natural light coming in from the wide windows. The main deck features a rational distribution of spaces. Its elegant lines make it incredibly wider compared to the previous Ferretti 660. A vertically sliding glass partition allows separating this area from the rest of the saloon or leaving it open, turning the main deck into a large open space. The dining area and the sofa are located in the central part of the deck, enjoying wider spaces and featuring the utmost comfort for the guests. The flybridge has been renewed and bears witness to Ferretti's great care for indoor and outdoor layout optimization. Only the bar unit located near the access staircase has been maintained from previous models; everything else has been entirely redesigned so as to ensure all guests the utmost comfort.

Factory Options

- Standard America Ferretti 690
- Hard top version
- Open galley USA version
- Varnished teak countertop in cockpit
- Upgraded Raritan ice maker connected to water tank
- Washer-dryer in master cabin closet
- Upgraded leather top for salon furniture in leather Penelope Oggi Corda
- TV 40" lcd/led A/NTSC US version in salon
- Do not install TV 32" in salon
- TV electric raising device for TV 40" in salon
- TV 22" lcd/led A/NTSC US version in VIP cabin
- Hi-Fi stereo FM/CD/DVD w/loudspeakers in VIP and guest cabin
- Garbage container in the cockpit
- Painting N.2 Dome color Bronze
- Vtr extension for hard top bronze
- Upgraded wooden floor in main deck
- Upgraded moquette in lower deck
- Decorative cushions in salon, master, VIP and guest cabins
- Upgraded bed frame, bedhead board upholstery in master, VIP and guest cabins
- Upgraded bedcovers in master, VIP and guest cabins
- Sofa + pouf in master cabin

- Upgraded external cushions upholstery (fly + cockpit) in sunbed on fly, sofa on fly and cockpit sofa
- Decoder SAT HD USA in master and VIP cabin
- Salon rug under two tables
- Canvas Package
- Upgraded queen size modular bed in stbd guest cabin
- Crew cabin additional folding bed
- Control station in the cockpit fixed with cover
- Mooring winch
- Shore fresh water intake
- Refrigerator on the flybridge 50 liters
- Teak on side walks
- 4 Cabin version + 1 crew
- Upgraded Engine MTU 1268 HP
- Cooler drawer in salon
- Searchlight electrically controlled (big rectangular)
- Electrical raising for curtains in salon
- Electrical raising for curtains in master cabin
- Electrical raising for roll blinds in master cabin
- Roll blind in VIP/guest cabin
- Upgraded leather for interior sofas upholstery - Sofa in salon: leather Penelopeoggi Nuvola Canapa
- Electrical barbecue USA type on flybridge
- Waste mincer in galley sink 230v
- Helm seat jointly manual in mover upholstery in Scuba 005 col. Taupe
- Lighting for stairs towards cabins
- Lighting system interior tubulars
- Underwater lights
- Lights external additional (couple) sidewalks
- Smoke separator for generator
- Flooring teak on flybridge

Main Salon

- Aft tempered glass sliding door with stainless steel frame
- Cabinets with shelves
- Bone white leather sofa
- Dining area
- Docking for I-POD
- 32' TV
- Bose 3-2-1 Surround sound system
- Electric raising device for TV
- Fitted carpet

- Indirect lighting
- Roman blinds on side windows
- Side windows with tilt opening
- KVH M5 SAT TV Antenna
- Smoke detectors
- Furniture modifications for US appliances
- Custom Decor package

Galley

- Ceramic cook top with 4 burners
- Vent Fan
- Refrigerator
- Raritan Ice Maker
- Microwave Oven
- Bigger pantry
- Custom serving tray shelf
- Miele Washer/Dryer in Corridor
- Overhead cabinets
- Quartz counter tops
- Stainless steel sinks with hot/cold fresh water
- Sliding door to the salon
- Venetian blinds on aft tilting window

Master Stateroom and Head

- Double bed with drawers underneath
- Natural ventilation under bed
- Upholstered headboard
- Drawers
- Walk in wardrobe with hanging rail
- Bedside cabinets (2)
- Cabinet with shelves
- Chaise lounge
- Safe
- Reading lights (2)
- Roman blind
- Bose CD/DVD Stereo
- Sharp 19" TV
- IPOD docking station
- Carpet
- Mirror

- Indirect lighting
- Hull windows (2) with 4 openable stainless steel portholes

Master Head:

- Ceramic electric head
- Venetian blinds
- Lockers
- Mirror
- Shower with tempered glass door
- Stainless steel openable portholes (2)
- Corian sink and countertop
- Control panel
- Wood flooring

VIP Stateroom

- Double bed with drawer underneath
- Natural ventilation under bed
- Escape hatch
- Carpet
- Stainless steel openable portholes (2)
- Mirror
- Reading lights
- Roman blind
- Shelves
- Headboard
- Wardrobes with mirror (2)

VIP Head:

- Ceramic electric head
- Venetian blinds
- Lockers
- Mirror
- Shower with tempered glass door
- Stainless steel openable porthole
- Corian sink and countertops
- Control panel
- Wood flooring

Guest Stateroom

- Two beds with drawers underneath
- Bedside table with drawers (2)
- Carpet
- Mirror
- Natural ventilation under beds
- Reading lights (2)
- Roman blind
- Stainless steel portholes (2)
- Headboards
- Wardrobe with mirror

Guest Head

- Ceramic electric head
- Mirror
- Overhead lockers and shelves
- Shower with plexiglass partition
- Stainless steel openable porthole
- Venetian blinds
- Corian sink and countertop
- Control panel
- Wood flooring

Crew Quarters

- Access to the main deck area through non-slip steps
- Bed
- Bedside tables
- Cabinets with lockers
- Carpet
- Stainless steel openable portholes
- Wardrobe
- Crew Head
- Electric head with fresh water
- Lockers
- Mirror
- Shower with waterproof curtains
- Stainless steel openable porthole
- Sink with hot/cold fresh water

Cockpit

Cockpit Deck:

- Access to aft platform through a GRP step and a stainless steel gate
- Access to crew area through GRP non-slip steps
- Access to engine room through a hatch and stainless steel ladder
- Access to flybridge through GRP and teak steps and stainless steel handrail
- Aft platform with foldaway ladder
- Aft sliding door and tilting window
- Amplifier with remote control and loudspeakers
- Bow pulpit with side rails
- Cockpit cabinet with countertop and storage
- Cockpit lighting
- Electric windlass
- External acoustic alarm for bilge water level at bow and stern
- GRP deck flooring with non -slip surface
- Hand held shower with hot/cold fresh water on aft platform
- Hatches (2)
- Ice-maker
- Mooring stations (2)
- Shore line cable
- Cockpit cable
- Stainless steel deck hardware
- Stainless steel handles
- Side Boarding Gates- Port and Starboard
- Hydraulic Swim Ladder
- Davit at Transom
- Mooring Cleats at 1/3 of boat (2)
- Crew and Storage Room, Stern
- Port storage
- Sunpads and cushions with draining foam
- Teak Passarella cockpit floor and steps to side decks
- Telescopic-electro-hydraulic davit
- Two seater teak stern bench
- Canvas package

Cockpit Helm:

- Automatic pilot
- Navnet 3D interfaced chart plotter
- Barometer
- Furuno Radar/Plotter
- VHF Furuno
- Autopilot
- Furuno Depth, Speed and Compass
- Electronic controls for engine clutch and throttle with easy dock and auto troll functions

- Electric steering
- Carpet
- Helm seat
- Instant parallel battery
- Main electrical panel
- Side window with tilt opening
- Windshield wipers (2)

Flybridge/ Helm

- Access to cockpit through GRP and teak steps
- Furuno Depth, Speed and Compass
- Furuno Navnet
- Furuno radar antenna in radar arch
- Autopilot
- Fusion Radio/CD/MP3 system with amplifier
- Electrically controlled spotlight
- Furuno VHF
- Navnet 3D interfaced chart plotter Furuno Navpilot
- Cabinet with storage and sink
- Navigation lights
- Sofa with storage underneath
- Watertight loudspeakers (2)
- Rudder angle indicator
- Railing
- Stainless steel signal/flag mast
- Custom made Frigibar freezer underneath the port sofa next to the helm seat
- Ice maker in wet bar

Electrical

- 80' white 50 amp shore cord
- Air Conditioning System 60,000 BTU
- Night time generator, 13.5 kw
- Battery Cut Offs for Appliances & Generator
- Battery 20KW Kohler Generator (241 hrs)
- 50A/240V Glenndinning Shore Cord Reeler
- 24V/240V Voltage Measuring System
- Battery disconnecting switches
- Breaker box
- TV SAT antenna cables in all cabins

Mechanical Equipment

- 1,000 gal a day water water maker
- Headhunter high pressure wash down pump with 3 hose connects (1) at bow, (1) at cockpit, and (1) at flybridge
- Motorized helm seat
- Single Racor Generator Filter
- 50A Fail Safe Galvanic Isolator
- Anti-Incendiary Fire-Boy System
- Deck Connection for Pumping Down Blackwater Tank
- Sea Water Chain for Forepeak Washing
- Shore Fresh Water Intake w/pressure regulator and gauge
- Side-Power Bow & Stern Thruster 10.7 HP
- Bilge pumps

Additional Equipment

- Seakeeper NG9 Gyro
- Furuno Nav Tech TX touch TZT14
- Reclining backrest for sun pads cushions
- Brownies Marine Compressor Yacht pro 45 Remote fill panel with flow control
- Vkoool anti-UV and Infrared control system in all windows
- Aqua Scan custom made tender

Engine Room

- Twin MTU V8 2000 M94
- Access to cockpit through hatch and stainless steel and teak ladder
- Air intakes (2) with remote controlled shut off
- Change over valves (2) for emergency bilge water pumping
- Drainage for washer & dryer
- Electric bilge pump
- Electric self locking ventilation fan
- Fire extinguishing system with automatic/manual control
- Fuel tank lever indicator
- Smoke detection alarm system for engine room
- Watertight forward bulkhead
- Wood flooring with non-slip surface
- Water filter for generator cooling system
- Fresh water outlet for filling & cooling
- Oil change pump for generators

Safety Equipment

- Smoke detectors in each room / staterooms
- Smoke Detectors in Engine room (3)
- Life rafts (2): 4 & 6 person

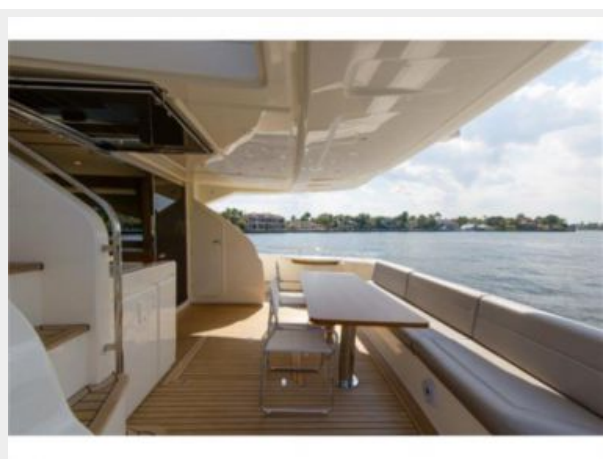
Исключения

При продаже яхты исключаются личные вещи владельца.

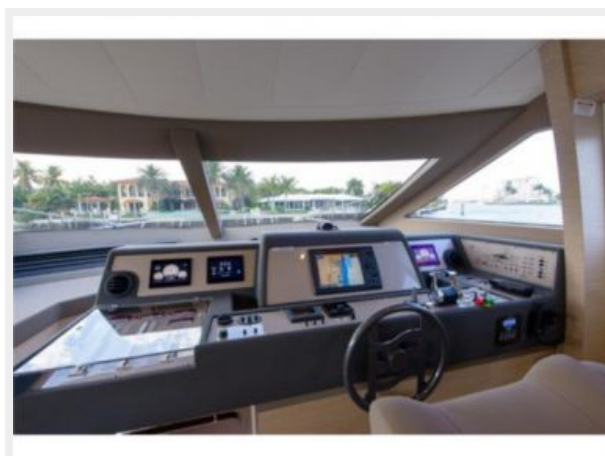
Отказ от ответственности

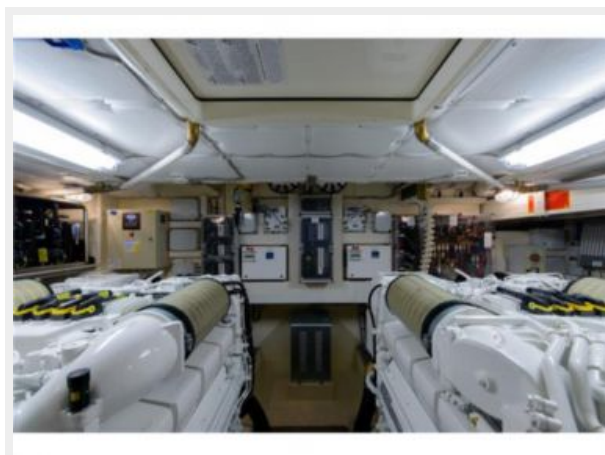
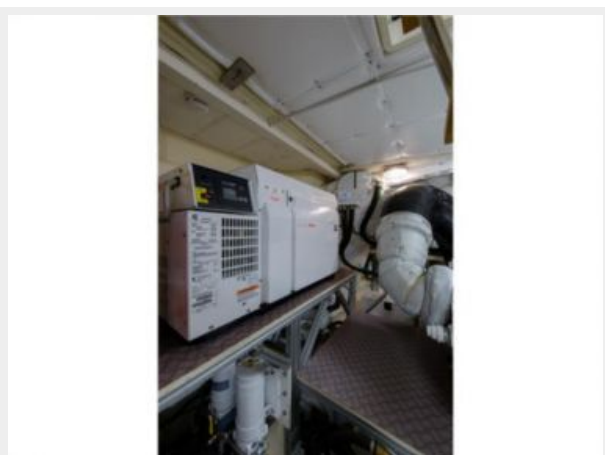
Компания предоставляет описание судна или яхты добросовестно, но не может гарантировать точность этой информации, а также не ручается за техническое состояние. Покупатель должен проинструктировать своих агентов или оценщиков исследовать представленную информацию более подробно, по собственному желанию. Продажа судна или яхты, изменение цены или снятие с продажи будет происходить без предварительного уведомления.

ФОТОГРАФИИ











КОНТАКТЫ

Андрей Шестаков (Andrey Shestakov) – ведущий яхтенный брокер отдела продаж яхт и судов компании Shestakov Yacht Sales Inc. Официальный представитель Shestakov Yacht Sales Inc. для русскоговорящих клиентов в центральном офисе компании в Майами/Форт Лодердейл/Флорида/США.

Контактная информация

Email: andrey@shestakovyachtsales.com

Web: shestakovyachtsales.com

Телефоны

Краснодарский край: **+7(918)465-66-44**

США, Майами, Флорида: **+1(954)274-4435**

Время работы

Понедельник – Суббота: **9:00 - 21:00**
EDT

Воскресенье: **Закрито**

Адрес



Harbour Towne Marina, 850 NE 3rd St,
STE 213, Dania, FL 33004