

N/A — HATTERAS



Судостроитель: HATTERAS

Год постройки: 2003

Модель: Моторная яхта

Цена: ЦЕНА ЯХТЫ ПО ЗАПРОСУ

Местонахождение: Venezuela

Длина общая: 63' 0" (19.20m)

Ширина: 20' 1" (6.12m)

Крейс. скорость: 23 Kts. (26 MPH)

Макс. скорость: 28 Kts. (32 MPH)

Купить n/a — HATTERAS а также выбрать подходящую вам яхту из нашего каталога яхт вам поможет опытный яхтенный брокер Андрей Шестаков. На сегодняшний день компания Shestakov Yacht Sales Inc. имеет большое количество яхт в собственном списке продаж, а также тесно сотрудничает со всеми крупными яхтенными производителями по всему миру.

Для того чтобы купить яхту n/a — HATTERAS а также проконсультироваться по любому вопросу связанному с покупкой, продажей, чартером яхт позвоните по телефону **+7(918)465-66-44**.

ОГЛАВЛЕНИЕ

ОГЛАВЛЕНИЕ	2
ХАРАКТЕРИСТИКИ	4
Обзор	4
Основная информация	4
Размеры	5
Скорость, вместимость и масса	5
Размещение	5
Корпус и палуба	5
Информация о двигателе	5
ПОДРОБНОЕ ОПИСАНИЕ	6
Salon	6
Galley	6
Companionway	7
Master Stateroom/Aft/Full Beam	7
Master Head	7
VIP Guest Stateroom/Forward	8
VIP Guest Head	8
Guest Stateroom	9
Guest Head	9
Hull and Deck	9
Aft Deck/Swim Platform	10
Flybridge and Helm	10
Lower Helm/Pilot House	11
Lower Helm Electronics	12
Electronics	12
Engine Room and Mechanical Equipment	13
Electrical Equipment	13
Exclusions	14

Disclaimer	14
Исключения	14
Отказ от ответственности	14
ФОТОГРАФИИ	15
КОНТАКТЫ	33
Контактная информация	33
Телефоны	33
Время работы	33
Адрес	33

ХАРАКТЕРИСТИКИ

Обзор

The best 63' Hatteras Raised Pilothouse of the market. This beautiful vessel is in mint condition.

Vessel Features:

- Pipewelders hard top w/full enclosure
- Bridge Air Conditioning
- Galley incorporated w/ salon
- Large aft deck w/new custom cushions
- African Makore wood paneling & valances
- Soft goods all updated throughout whole boat
- Sea Recovery water maker
- Bow Thruster
- New Skipper 11' RIB dinghy w/ Marquipt davit
- Teak decks
- Marquipt tide ride ladder
- Twin Onan 21.4 diesel generators
- Upgraded CAT Engine monitors
- Aft deck controls
- Underwater lights
- Crew room for two people with bathroom,air conditioning,sound system,radio and Direct TV

The 63 Hatteras motor yacht was introduced to compete with the Euro look of boats that were being imported to the US with this classy look, lines and flowing windows modernized this boat to make it work better for the US market by keeping a bigger beam and spacious interior and exterior. Peregrina has had a great life, good engine package and exceptional care. Current owners have upgraded this boat and she shows great. See the list above and make an appointment to come see this beautiful motor yacht!

Основная информация

Тип судна: Моторная яхта

Модельный год: 2003

Год постройки: 2003

Страна: Venezuela

Открытая палуба мостика: Да

Размеры

Длина общая: 63' 0" (19.20m)

Ширина: 20' 1" (6.12m)

Скорость, вместимость и масса

Крейс. скорость: 23 Kts. (26 MPH)

Макс. скорость: 28 Kts. (32 MPH)

Вместимость воды: 200 Gallons

Вместимость сточного бака: 100 Gallons

Объем топливного бака: 1290 Gallons

Размещение

Всего кают: 3

Корпус и палуба

Материал корпуса: Fiberglass

Информация о двигателе

Двигатели: 2

Производитель: Caterpillar

Модель: 3412E

Тип двигателя: Inboard

Тип топлива: Diesel

ПОДРОБНОЕ ОПИСАНИЕ

Salon

- Heavy duty SS aft salon door
- Designer carpet- Beige – New w/ canvas runner
- U shaped leather sofa- Beige- New w/ storage below- sofa reupholstered with upgraded leather
- Salon blinds- upgraded silhouette & electric
- Aft privacy curtain
- Custom cocktail table w/ storage below and custom glass top
- Overhead lighting
- Overhead Stereo speakers
- High gloss African Makore wood paneling throughout
- High gloss African Makore valances
- Whisperwall wall coverings
- Corian counter top in incorporated galley area to salon
- Entertainment center-Denon receiver / Samsung DVD player/Direct TV receiver
- Sony 42” flat screen -recessed in Corian counter-pop up
- Storage cabinet near TV
- Utility drawer near salon door
- SAT TV
- Cruisair Air A/C w/ SMX digital controls
- Storage cabinets to starboard side
- Electrical outlets
- Smoke detector

Galley

- Beautiful open galley on same level as salon
- Corian counter top w/ large recessed SS sink & designer faucet
- Storage under counter tops
- Amtico flooring
- Sub-Zero under counter refrigerator/freezer drawers- 2 each
- Whirlpool trash compactor
- Sharp microwave/convection oven
- Fisher & Paykel dishwasher
- Whirlpool 4 burner cooktop
- Garbage disposal
- Cabinet space
- Electrical outlets
- Overhead lighting

- **Overhead speakers**
- **30 gallon hot water heater**
- **Electrical outlets**
- **New Drainless icemaker**

Companionway

- **Hi gloss African Makora wood throughout**
- **Carpet w/ runner**
- **Whirlpool washer/dryer**
- **Overhead lighting**
- **SS handrail**
- **Privacy doors to staterooms and heads**

Master Stateroom/Aft/Full Beam

- **Bi fold doors to master stateroom**
- **Island queen bed**
- **Padded headboard**
- **Designer bedding and pillows**
- **Custom HMC mattress**
- **Designer carpet- beige**
- **Storage below berth**
- **Nightstands w/ designer lamps and drawer storage**
- **High gloss African Makore wood paneling throughout**
- **Cruisair AC w/ SMX digital controls**
- **Two dressers w/ mirror**
- **Hidden safe**
- **Large hanging closet**
- **Samsung 42" flat screen TV w/ SAT TV receiver**
- **Electrical outlets**
- **Denon receiver and Blu-ray DVD player**
- **Smoke detector**
- **Overhead lights**
- **Overhead speakers**
- **Port hole w/ drapes & block outs**
- **En-suite head**

Master Head

- **Amtico flooring**

- **Vacu Flush head**
- **Wallpaper**
- **Stall shower w/ tub**
- **Port hole in tub area**
- **Corian counter top w/ molded sink & designer faucet**
- **Storage below vanity**
- **Mirrored medicine cabinet**
- **Mirrored ceiling**

VIP Guest Stateroom/Forward

- **Queen berth w/ upholstered headboard & mirror above**
- **Custom painting Velcro to forward mirror**
- **Anchor locker access forward of bulkhead**
- **Storage below bed**
- **Storage P & S above bed**
- **Designer bedding and pillows**
- **Designer carpet**
- **Samsung 32" flat screen TV w/ SAT TV receiver**
- **Large mirror on stateroom door**
- **Overhead speakers**
- **High gloss African Makore wood throughout**
- **Reading lights**
- **Overhead hatch w/ screen**
- **Access in sole to sump pumps**
- **Cruisair AC w/ digital SMX controls and vent**
- **Hanging lockers P & S**
- **En-suite head**

VIP Guest Head

- **Amtico flooring**
- **Vacu Flush head**
- **Corian counter top w/ recessed sink & designer faucet**
- **Mirrored medicine cabinet**
- **Port hole in shower area with privacy cover**
- **Shower stall w/ bench**
- **Storage below vanity**
- **Overhead light**
- **A/C vent**
- **Mirrored ceiling**
- **Overhead hatch**

- **Exhaust fan**

Guest Stateroom

- **Upper and lower berths**
- **Designer bedding and pillows**
- **Designer carpet**
- **Nightstand w/ cabinet space & designer lamp**
- **Samsung 20" flat screen TV w/ SAT TV receiver**
- **Hanging locker w/ full length mirror**
- **High gloss African Mekore wood**
- **Reading light**
- **Overhead lighting w/ dimmers**
- **Electrical outlets**
- **Mirrored forward bulkhead**
- **Smoke detector**
- **Port hole w/ block out**
- **Cruisair Air A/C w/ SMX digital controls (controls in hanging locker)**
- **En-suite head**

Guest Head

- **Corian counter top w/ molded sink and designer faucet**
- **Storage below vanity**
- **Vacu Flush head**
- **Mirrored medicine cabinet**
- **Amtico flooring**
- **Stall shower / bench**
- **Electrical outlet w/ GFI**
- **Mirrored ceiling**
- **Towel racks**
- **Exhaust fan**

Hull and Deck

- **White hull sides**
- **Hard top w/ enclosure**
- **Bow pulpit w/ SS rails**
- **Forward sun pad – new w/ new cover**
- **Teak deck**
- **American bow thruster- 16 hp-hydraulic**

- **Trim tabs**
- **Boarding ladder**
- **Cruisair AC- 86,000 BTU total**
- **Windlass w/ remote at both helm stations**
- **Hydraulic davit**
- **Nibral 6 blade propellers**
- **Dockside water inlet**

Aft Deck/Swim Platform

- **Teak decks**
- **Molded long aft seat w/ custom new cushions and pillows w/ cover**
- **Large Corian table w/ SS pedestal**
- **Heavy duty Stainless Steel salon door**
- **Starboard side cockpit controls w/ thruster control**
- **Storage area**
- **Engine room access in sole**
- **SS heavy duty cleats**
- **Steps up and down to swim platform**
- **Teak on swim platform**
- **Fresh water shower**
- **Wash down**
- **Courtesy lighting**
- **Outlets for TV/telephone**
- **SS rails**
- **Bridge ladder**
- **Scuppers**
- **Epirb**
- **Storage cabinets P & S**
- **Overhead lights**
- **Overhead speakers**
- **Access to Lazarette**
- **Extended overhand for aft deck w/ removable shade**
- **Molded swim platform w/ swim ladder and new stainless steel rails**
- **Hydraulic assisted storage garage aft of deck on platform**
- **2 Glendenning shore power cords**
- **Aft deck camera**

Flybridge and Helm

- **Air Conditioning in the Flybridge**
- **Upgraded new CAT engine displays**

- **Custom wet bar w/ teak top and sink & storage**
- **Refrigerator/Freezer w/ icemaker**
- **Electronics package**
- **Bluewater helm chairs w/ covers**
- **Custom helm carpet-new**
- **Flat screen TV w/ SAT TV receiver**
- **Custom aft seating w/ cushions**
- **Settee seating to starboard aft**
- **Horn**
- **VDO rudder angle indicator**
- **Hatteras Systems Monitor**
- **Trim tabs**
- **Windlass remote**
- **Emergency backup controls**
- **Engine synchronizer**
- **Compass**
- **ACR spotlight controls**
- **Full canvas enclosure**
- **Canvas seat covers**
- **American bow thruster-Hydraulic**
- **Davit w/Skipper 11' RIB and Evinrude 40 HP outboard**
- **Fusion stereo w/ Bose speakers and subwoofer**
- **Life raft**

Lower Helm/Pilot House

- **Dual Tracy helm seats- reupholstered 2014**
- **Upgraded CAT engine monitors**
- **High gloss African Makore wood throughout**
- **L Lounge aft of pilothouse w/ Corian table and seating-Reupholstered leather 2014**
- **Headliner and dash cover all reupholstered- 2014**
- **Overhead lighting**
- **Smoke detector**
- **Side door to starboard**
- **Hatteras Systems Monitor**
- **American bow thruster- Hydraulic**
- **Large wind shield w/ wipers/wash & defoggers**
- **Safety glass windshield/ tinted**
- **New Windshield cover**
- **Lower helm electronics package**
- **New CAT engine displays**
- **Hydraulic Single lever controls**
- **Tilt wheel**

- **Amtico flooring**
- **Hydraulic steering**
- **Electrical panel to starboard behind cabinets**
- **Trim tabs switches at helm**
- **Ritchie compass**
- **Horn**
- **SS steps to fly bridge**
- **Sealed door to bridge**
- **Storage cabinets**
- **Stereo speakers**
- **Overhead lights w/ dimmers**
- **Fuel transfer pump**
- **Windlass remote control**
- **Emergency controls**
- **Engine synchronizer**
- **Engine alarms**
- **Fume detector**
- **Full instrumentation gauges**
- **ACR spotlight remote**
- **Electrical outlets**
- **Overhead lighting**
- **Cruisair AC w/ SMX digital controls**
- **Stairway to lower companionway**

Lower Helm Electronics

- **2 Furuno Navnet 10.4" monitors**
- **Furuno Navnet radar**
- **Furuno chart plotter/GPS/depth**
- **Furuno RD30- depth/speed**
- **Simrad AP20 autopilot**
- **Northstar 952X GPS/plotter- Overhead**
- **B & G HS 2000 depth/speed indicator- Overhead**
- **Standard Horizon Spectrum VHF radio**
- **Sea157 VHF**
- **CAT engine monitors**

Electronics

- **Garmin 8212 chart plotter w/ AIS/XM Weather/Depth gauge**
- **Furuno Navnet screen**
- **Furuno Navnet radar w/ open array**

- **Furuno Navnet GPS/chart plotter**
- **Furuno RD30 depth/speed**
- **Robertson AP22 autopilot**
- **Standard Horizon VHF radio**
- **System Ghost of Satellite tracking and remote security monitoring with TV face**

Engine Room and Mechanical Equipment

- **Twin Caterpillar 3412E/1400 HP diesel engines/1675 hours**
- **ZF gears**
- **Twin Onan 21.4 kW diesel generators 1775/1860 hours**
- **Fireboy fire suppression bottle**
- **Oil change system**
- **AC raw water pumps**
- **Hot water heater-**
- **Engine room blower**
- **Engine room vents**
- **Dripless shaft logs**
- **Overhead lighting**
- **Batteries & battery chargers**
- **Racor filters**
- **Fuel water separators**
- **Fuel tanks**
- **Fuel transfer pump**
- **Bilge pumps**
- **Cablemaster bucket**
- **Camera**

Electrical Equipment

- **Twin Onan diesel 21.4kW diesel generators (2) 1775/1860 hours**
- **12V/24V/120V/240V 50 amp system**
- **Electrical panels and sub panel**
- **Hatteras Systems Monitor**
- **Battery parallel**
- **Shore cord w/ cable master**
- **Battery bank**
- **Battery charger**
- **Battery isolator**
- **Extra 50' shore cord**

Exclusions

Owners personal belongs, clothes, glass wave art sculpture in master stateroom. Please inquire about full exclusion list.

Disclaimer

The Company offers the details of this vessel in good faith but cannot guarantee or warrant the accuracy of this information nor warrant the condition of the vessel. A buyer should instruct his agents, or his surveyors, to investigate such details as the buyer desires validated. This vessel is offered subject to prior sale, price change, or withdrawal without notice.

Исключения

При продаже яхты исключаются личные вещи владельца.

Отказ от ответственности

Компания предоставляет описание судна или яхты добросовестно, но не может гарантировать точность этой информации, а также не ручается за техническое состояние. Покупатель должен проинструктировать своих агентов или оценщиков исследовать представленную информацию более подробно, по собственному желанию. Продажа судна или яхты, изменение цены или снятие с продажи будет происходить без предварительного уведомления.

ФОТОГРАФИИ

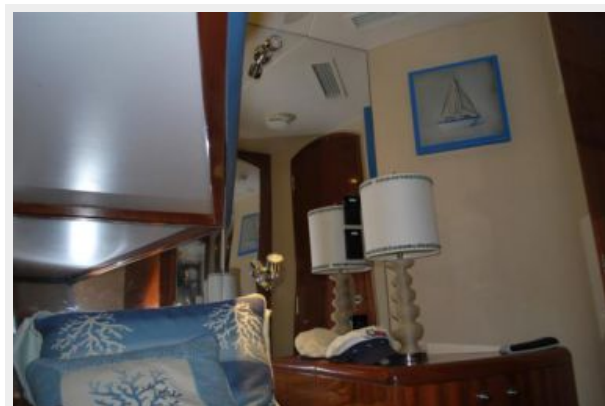




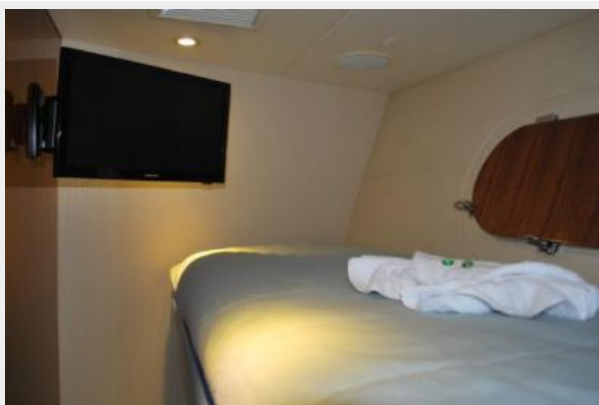
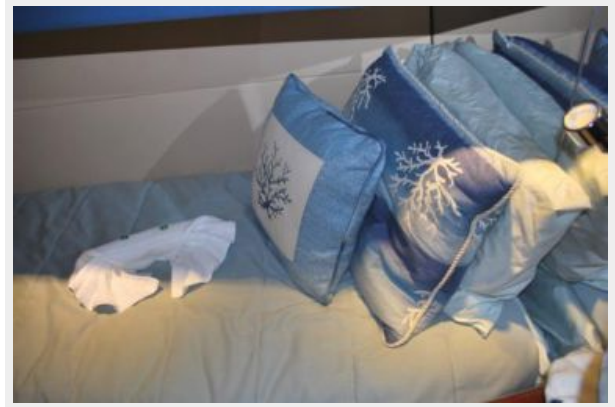




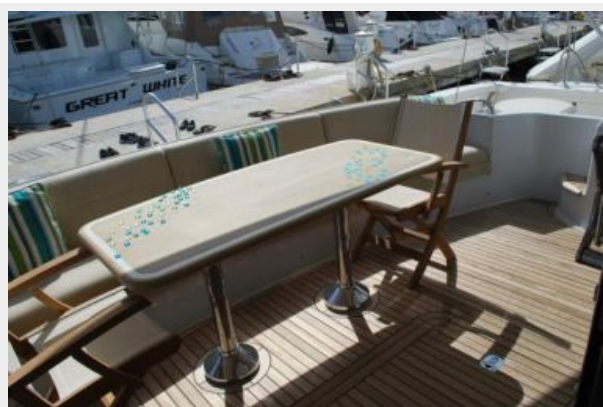


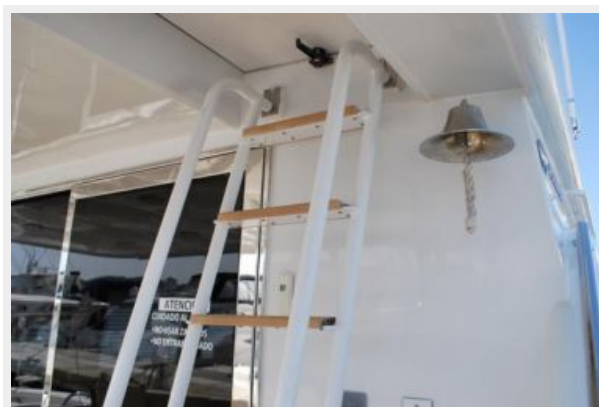






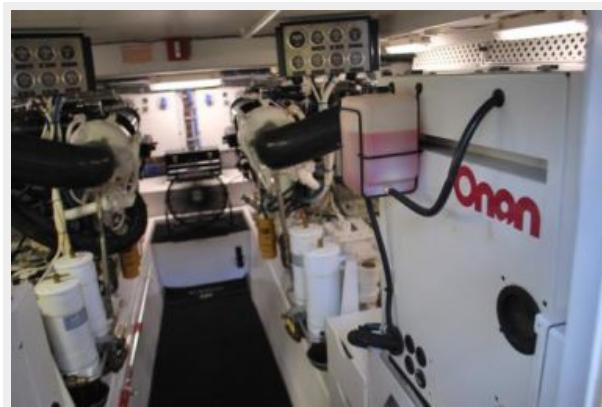






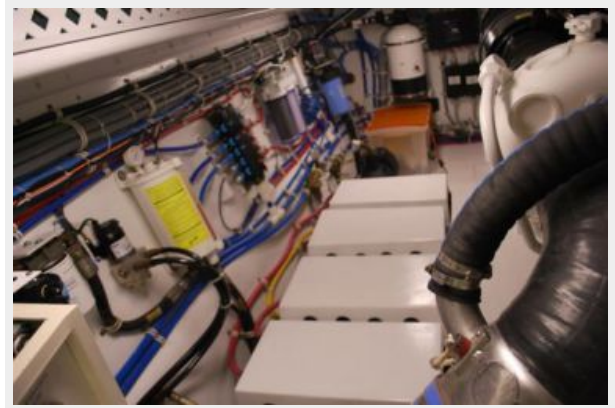
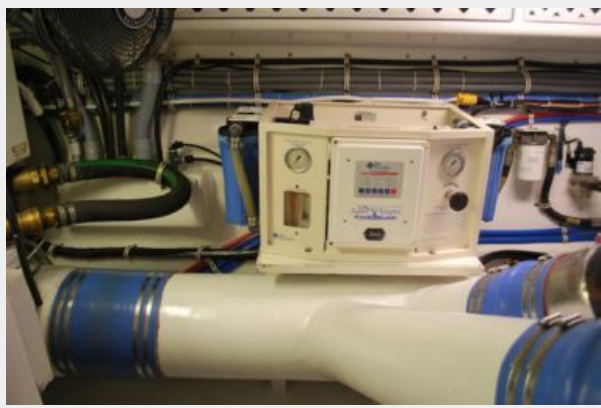


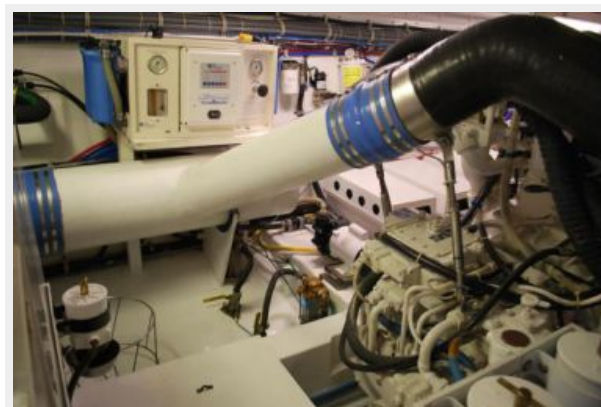
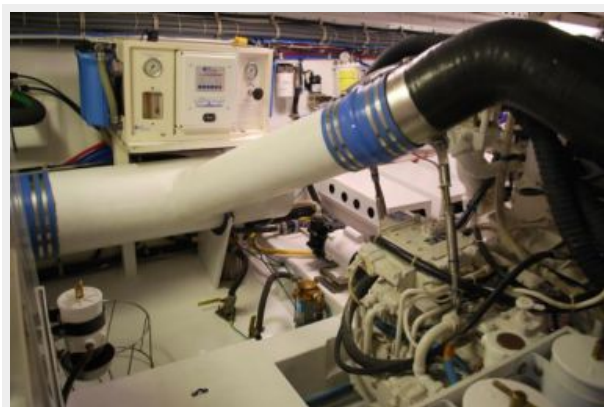












КОНТАКТЫ

Андрей Шестаков (Andrey Shestakov) – ведущий яхтенный брокер отдела продаж яхт и судов компании Shestakov Yacht Sales Inc. Официальный представитель Shestakov Yacht Sales Inc. для русскоговорящих клиентов в центральном офисе компании в Майами/Форт Лодердейл/Флорида/США.

Контактная информация

Email: andrey@shestakovyachtsales.com

Web: shestakovyachtsales.com

Телефоны

Краснодарский край: **+7(918)465-66-44**

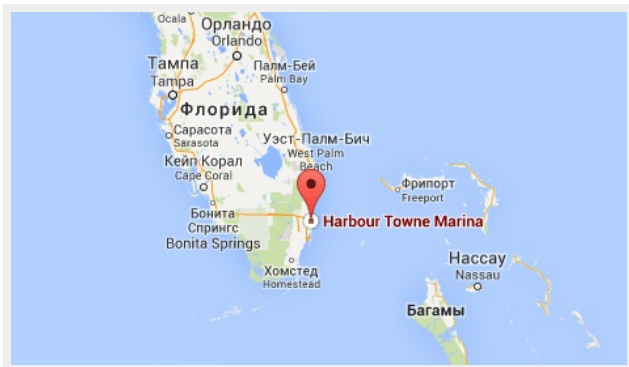
США, Майами, Флорида: **+1(954)274-4435**

Время работы

Понедельник – Суббота: **9:00 - 21:00**
EDT

Воскресенье: **Закрето**

Адрес



Harbour Towne Marina, 850 NE 3rd St,
STE 213, Dania, FL 33004