

SIR WINSTON — WINSTON MARINE YACHTS



Builder: WINSTON MARINE YACHTS

Year Built: 2007

Model: Boats

Price: PRICE ON APPLICATION

Location: United States

LOA: 128' (39.01mm)

Beam: 35

Max Draft: 6' (1.83mm)

Cruise Speed: 8.69 Knots Kts. (10 MPH)

Max Speed: 9.56 Knots Kts. (11 MPH)

Our experienced yacht broker, Andrey Shestakov, will help you choose and buy a yacht that best suits your needs **Sir Winston — WINSTON MARINE YACHTS** from our catalogue. Presently, at **Shestakov Yacht Sales Inc.**, we have a wide variety of yachts available on our sale's list. We also work in close contact with all the big yacht manufacturers from all over the world.

If you would like to buy a yacht **Sir Winston — WINSTON MARINE YACHTS** or would like help answering any questions concerning purchasing, selling or chartering a yacht, please call **+1(954)274-4435**

TABLE OF CONTENTS

TABLE OF CONTENTS	2
SPECIFICATIONS	3
Overview	3
Basic Information	4
Dimensions	4
Speed, Capacities and Weight	4
Accommodations	5
Hull and Deck Information	5
Engine Information	5
PHOTOS	6
CONTACTS	13
Contact details	13
Telephones	13
Office hours	13
Address	13

SPECIFICATIONS

Overview

2007 128' SIR WINSTON IS A 350 PASSENGER DINNER CRUISE

Sir Winston, is one of the most beautiful privately owned passenger / mega yachts on the market. Sir Winston is 128 feet in length, and certified for 350 passengers, plus 20 crew. Sir Winston has entertained and provided a luxurious ambiance for famous actors and actresses, musicians, politicians, major sports team owners and Presidents and CEO's of many Fortune 500 companies. This State of the Art vessel was custom built to be the finest dinner yacht in the World, with over 16,000 square feet of deck area, including a Disco club deck, Captain's sky lounge, Crystal dining room, Captain's salon complete with large screen TV and fireplace, and full-size elevator to all decks. Employing famous naval architects DeJong & Lebet, and working closely with the United States Coast Guard, Winston Marine built one of the finest passenger vessels available today.

Her certificates and inspections are all up to date and she is presently fully operational and available for charter.

SIR WINSTON features five levels that are accessible to passengers, all of which can be reached by an elevator. The hull level contains passenger and crew staterooms. The Main Deck has a 1600 sq.ft. lounge/dining room and a large galley.

Lower Deck

5 Staterooms on lower level with heads, showers, TV's, and phones. Lower level also contains storage and maintenance rooms and watertight door leading to engine room.

Main Salon Deck

Fully carpeted with deluxe sitting areas and fireplace, fully equipped state of the art large commercial grade galley located forward. Galley equipped with 60 cycle PH dishwasher, large custom walk-in refrigerator, two large upright freezers, electric stove with convection oven and 3 additional convection ovens, and full laundry with two washers and dryers. Fore peak contains bow thruster engine. Main entry ways to vessel located port and starboard. Administrative area on main deck, along with 2 restrooms and staircase leading to staterooms and engine room below, and deck above.

Second Deck

Fully enclosed formal dining room. Aft bar area, two restrooms, buffet setup, and stair tower on this deck. Anchor storage located in the foredeck. Linens, silverware,

glassware, china, carts, tables, chairs, and centerpieces included with vessel.

Third Deck

Disco Club deck, with DJ area, DJ equipment, and professional Karaoke system. Disco Club deck comes equipped with fiber optic colored lighting, bar area, and buffet area. Stair tower and two restrooms on this deck.

Fourth Deck

Large open Sky Lounge with overhead aluminum top. Full bar with open seating and two restrooms. Helm station/Pilothouse located forward.

Basic Information

Category: Boats

Sub Category: Deck Boat

Model Year: 2007

Year Built: 2007

Country: United States

Dimensions

LOA: 128' (39.01mm)

Beam: 35

Max Draft: 6' (1.83mm)

Speed, Capacities and Weight

Cruise Speed: 8.69 Knots Kts. (10 MPH)

Max Speed: 9.56 Knots Kts. (11 MPH)

Water Capacity: 3200 Gallons

Holding Tank: 2400 Gal Gallons

Fuel Capacity: 4300 Gal Gallons

Accommodations

Total Cabins: 5

Total Berths: 10

Sleeps: 10

Total Heads: 10

Crew Cabin: 4

Crew Berths: 4

Crew Heads: 2

Hull and Deck Information

Hull Material: Steel

Engine Information

Engines: 2

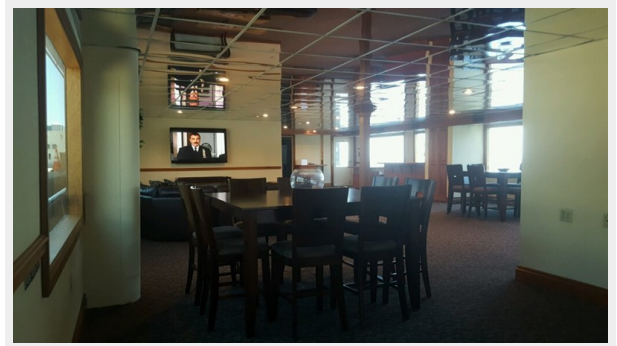
Manufacturer: John Deere

Engine Type: Inboard

Fuel Type: Diesel

PHOTOS

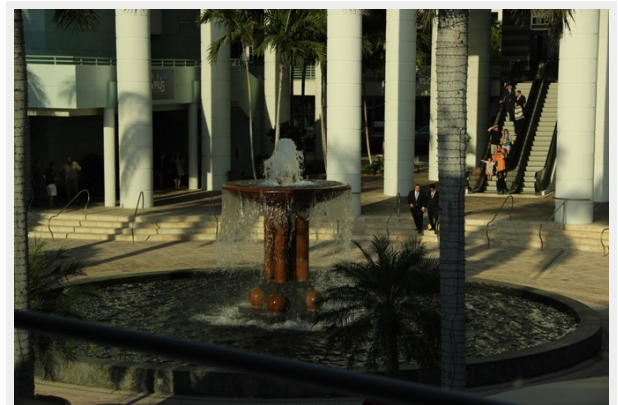


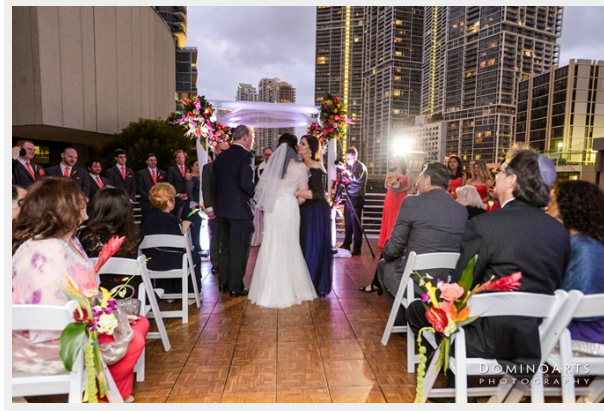












CONTACTS

Andrey Shestakov, leading yacht broker of the sales department of Shestakov Yacht Sales Inc. Shestakov Yacht Sales Inc., the official representative of the Miami/Fort Lauderdale FL headquarters.

Contact details

Email: **andrey@shestakovyachtsales.com**

Web: shestakovyachtsales.com/en/

Telephones

USA: **+1(954)274-4435**

Office hours

Monday – Saturday: **9:00 - 21:00** EDT

Sunday: **closed**

Address



Harbour Towne Marina, 850 NE 3rd St, STE 213, Dania, FL 33004