

D FISH N SEAS — CABO



Builder: CABO

Year Built: 2005

Model: Sport Fisherman

Price: PRICE ON APPLICATION

Location: United States

LOA: 45' 0" (13.72m)

Beam: 15' 8" (4.78m)

Min Draft: 4' 6" (1.37m)

Cruise Speed: 34 Kts. (39 MPH)

Max Speed: 40 Kts. (46 MPH)

Our experienced yacht broker, Andrey Shestakov, will help you choose and buy a yacht that best suits your needs **D Fish N Seas — CABO** from our catalogue. Presently, at Shestakov Yacht Sales Inc., we have a wide variety of yachts available on our sale's list. We also work in close contact with all the big yacht manufacturers from all over the world.

If you would like to buy a yacht **D Fish N Seas — CABO** or would like help answering any questions concerning purchasing, selling or chartering a yacht, please call **+1(954)274-4435**

TABLE OF CONTENTS

TABLE OF CONTENTS	2
SPECIFICATIONS	4
Overview	4
Basic Information	4
Dimensions	4
Speed, Capacities and Weight	4
Accommodations	4
Hull and Deck Information	4
Engine Information	5
DETAILED INFORMATION	6
2006 45 Cabo	6
Exclusions	11
Disclaimer	11
PHOTOS	12
Salon	12
Salon	12
Galley	12
Master	12
Guest	13
Master	13
Head	13
Head	13
Cockpit	14
Electrical Panel	14
Cockpit	14
Cockpit	14
Helm	14
Helm	14

Helm	15
Helm Deck	15
Helm Deck	15
Helm Deck	15
Helm Deck	15
Helm Deck	15
Tower	16
Tower Steering	16
Engine Room	16
Engine Room	16
Engine Room	17
Engine Room	17
Engine Room	17
Engine Room	17
Engine Room	17
Engine Room	17
Engine Room	17
Bow	18
Bow	18
Bow	18
CONTACTS	19
Contact details	19
Telephones	19
Office hours	19
Address	19

SPECIFICATIONS

Overview

Basic Information

Category: Sport Fisherman

Sub Category: Open

Model Year: 2006

Year Built: 2005

Country: United States

Dimensions

LOA: 45' 0" (13.72m)

Beam: 15' 8" (4.78m)

Min Draft: 4' 6" (1.37m)

Speed, Capacities and Weight

Cruise Speed: 34 Kts. (39 MPH)

Max Speed: 40 Kts. (46 MPH)

Displacement: 33000 Pounds

Water Capacity: 100 Gallons

Fuel Capacity: 800 Gallons

Accommodations

Total Cabins: 2

Total Berths: 3

Sleeps: 4

Total Heads: 1

Hull and Deck Information

Hull Material: Fiberglass

Engine Information

Engines: 2

Manufacturer: MAN

Model: V10

Engine Type: Inboard

Fuel Type: Diesel

DETAILED INFORMATION

2006 45 Cabo

Overview

D Fish N Seas is exceptionally maintained 45 Express, just out of the yard and ready to roll. She has many upgrades and was recently painted. All services are up to date. She is a must see if you are looking for an Express boat. Don't miss this opportunity.

Salon

Teak and Holly sole with carpet

Sharp flat screen, LCD, 30" TV

Entertainment Center w/Bose Lifestyle 38 system AM/FM/CD/DVD

Table with cover

Overhead hatch with screen

Air conditioning/heat, dual zone 16,000 BTU, 220 VAC

Aft settee has pull out double hide-a-bed

Electric panel

Galley

(2) Burner recessed ceramic cooktop

Corian countertop w/custom sea rails

Garbage disposal

Chest freezer 4.5 cu ft.

Pull out stainless steel rack shelves

Corian custom deep sink

Trash storage compartment

Microwave/convection oven

SubZero Refrigerator w/pull out drawers

Master Stateroom

Custom built in TV

Storage compartments and large drawers below bed

Built in safe for documents and valuables

AC controls w/7,000 BTU capacity

Overhead hatch with screen

Reading lights

Guest Stateroom

Storage

Double Over Under Berths

Lighting

Helm Deck

Large tackle cabinet and storage area to stbd w/ice maker

Helm deck A/C 30,000 BTU (September 2017)

Ice maker in stbd helm deck cabinet

Palm Beach pod mounted single lever electric controls

Electric engine gauge panel

Compass w/light, flush mounted Fire and bilge water level alarms, audible

Stidd Helm seat adjustable

Stidd matching companion seat mounted on starboard cabinet window

Miya Epoch US-9

Teaser reels overhead

LED lighting overhead

Exalto wiper controls

L Shaped couch

Bow thruster control

LED spreader lights (September 2016)

Cockpit

Freezer plates in cockpit freezer

Refrigeration plates in fish box

Rod holders (5)

Release rocket launcher

15kW Westerbeke Generator

Bait tank, 48 gallons, molded in transom with window

Gunwale padding

Storage boxes under gunwale

Ice machine dump in other fix box

Transom livewell

Transom door

Tackle center

Electronics

Lower Helm Deck:

Furuno NavNet 10.4" color LCD radar w/12kW 4' array

Furuno FCV1200 LCD sounder

Furuno NavNet receiver GPS navigator GP-37

Furuno RD30-4.5" Mono LCD digital depth display

(2) 15" Furuno monitor screens

Simrad autopilot, basic system AP25

VHF antenna 16ft

VHF standard Horizon Matrix GX2000

VHF standard Horizon Quantum GX5000S

ACR Searchlight, 24V RCL100D

Underwater light, 150W

Upper Electronics

Furuno 7" color/VGA, LCD chart plotter/GPS

Simrad AP26 compact autopilot control head

IC-502 Marine VHF Radio

TV antenna

Horn

Nav lights

Anchor light

Flood and overhead lights, dimmer switches and relay for flood lights

Secondary point pad

Engine Mechanical

Upgraded MAN engines, MAN V-10 @ 1100 HP 1000 Hour service recently performed

New risers installed 9/2017

Ice maker in cockpit

Auxiliary distribution panel for electronics

Windlass, electric 24V, remote switch at helm and deck switches

Propsmith propeller installation and removal tool

Backup freshwater pump 24 VDC

Electric fuel priming pump

Engine driven emergency bilge pump Y-valve on one engine

Oil change system, mains, generator and transmission

Trim tabs, fully recessed

Foxtress FX37 high tensile anchor

Algae fuel/water separator

Helm deck A/C 30,000 BTU

600 Gal per day water maker

Electronic controls w/engine synchronizer and trolling valves

Electronic engine gauge panel

Engine alarm system

Stuffing boxes, dripless lip seal type

Water heater, stainless steel, 220 VAC, 11 gallon

Custom Pipewelders Tuna Tower

Tuna tower molded top single rail

One piece molded standing platform

Control box 50" contoured face

Tower sunshade 72" molded top

Bench seat fixed w/backrest 72"

Outrigger 38' 3-spreader, bridge

Center rigger: tapered pole PW

Rod locker molded into hardtop

Horns-reinstall customer supplied

Controls and steering MANN-45 Cabo

Express enclosure 4-side

Compass flush mounted F82

Radar box hardtop #89 oval style for radar dome & teasers

Teaser reel-US9-24 volt without handle

Lights - recessed LED red

Lights - recessed LED white

Lights - anchor run lights

Lights- quartz, 2 in 1 pod molded

Lights – quartz, single pod molded

Lights - LEDNAV stern molded

Lights - LEDNAV red/green molded

EPIRB mounted to tower floor

Exclusions

Owner's personal belongings.

Disclaimer

The Company offers the details of this vessel or yacht in good faith but cannot guarantee or warrant the accuracy of this information nor warrant the condition of the vessel. A buyer should instruct his representatives, agents, or his surveyors, to investigate such details as the buyer desires validated. This vessel or yacht is offered subject to prior sale, price change, or withdrawal without notice.

PHOTOS

Salon



Salon



Galley



Master



Master



Guest



Head



Head



Electrical Panel



Cockpit



Cockpit



Cockpit



Helm



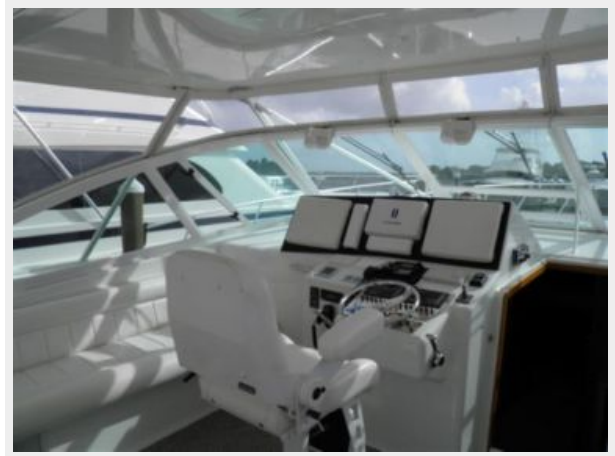
Helm



Helm



Helm Deck



Helm Deck



Helm Deck



Helm Deck



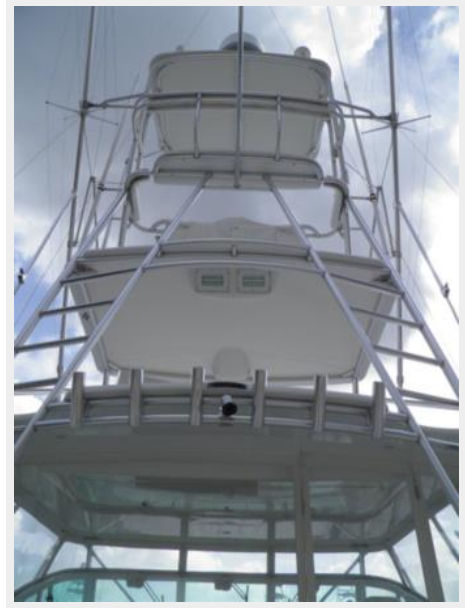
Helm Deck



Tower Steering



Tower

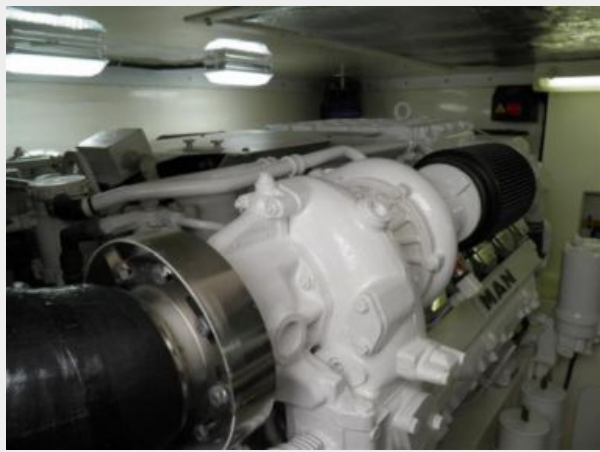


Engine Room

Engine Room



Engine Room



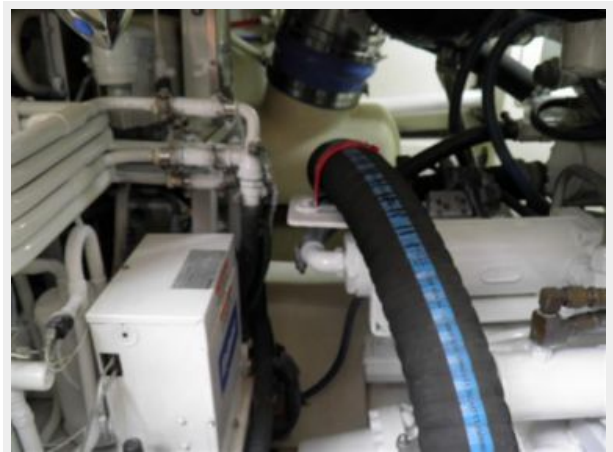
Engine Room



Engine Room



Engine Room



Engine Room



Engine Room



Bow



Bow



Bow



CONTACTS

Andrey Shestakov, leading yacht broker of the sales department of Shestakov Yacht Sales Inc. Shestakov Yacht Sales Inc., the official representative of the Miami/Fort Lauderdale FL headquarters.

Contact details

Email: andrey@shestakovyachtsales.com

Web: shestakovyachtsales.com/en/

Telephones

USA: +1(954)274-4435

Office hours

Monday – Saturday: **9:00 - 21:00** EDT

Sunday: **closed**

Address



Harbour Towne Marina, 850 NE 3rd St,
STE 213, Dania, FL 33004