

FAR BLUE — SOUTHERN WIND SHIPYARDS



Builder: SOUTHERN WIND SHIPYARDS

Year Built: 2002

Model: Cruising Sailboat

Price: PRICE ON APPLICATION

Location: Italy

LOA: 72' 0" (21.93m)

Beam: 18' 10" (5.74m)

Min Draft: 9' 2" (2.77m)

Cruise Speed: 8 Kts. (9 MPH)

Max Speed: 10 Kts. (12 MPH)

Our experienced yacht broker, Andrey Shestakov, will help you choose and buy a yacht that best suits your needs **FAR BLUE — SOUTHERN WIND SHIPYARDS** from our catalogue. Presently, at Shestakov Yacht Sales Inc., we have a wide variety of yachts available on our sale's list. We also work in close contact with all the big yacht manufacturers from all over the world.

If you would like to buy a yacht **FAR BLUE — SOUTHERN WIND SHIPYARDS** or would like help answering any questions concerning purchasing, selling or chartering a yacht, please call **+1(954)274-4435**

TABLE OF CONTENTS

TABLE OF CONTENTS	2
SPECIFICATIONS	3
Overview	3
Basic Information	3
Dimensions	4
Speed, Capacities and Weight	4
Accommodations	4
Hull and Deck Information	4
Engine Information	5
PHOTOS	6
saloon	6
saloon	6
saloon	6
owner's cabin	7
owner's cabin	7
head	7
guest cabin	7
guest cabin	7
CONTACTS	9
Contact details	9
Telephones	9
Office hours	9
Address	9

SPECIFICATIONS

Overview

Performance cruiser Far Blue is hull #10 of the successful SW72 mini-series designed by Farr Yacht Design (naval architecture, sail plan and appendages) and Antonio Minniti (deck and interior layout).

With hull and deck entirely built in fiberglass sandwich, the yacht was designed for short- hop cruising as well as for serious trans- ocean passages.

Far Blue is the ideal yacht for anyone looking for both comfort and top-quality finishing. Her versatile deck plan incorporates a large central guest cockpit protected by a recessed dodger and a separate stern sailing cockpit where most manoeuvring gear is concentrated.

The Italian design interior sees an en suite master cabin and two en suite double guest cabins fore of the saloon. The spacious saloon amidships is equipped with a bar and a video, TV and music system and features a large dining area with a comfortable sofa in front of it. Crew quarters aft feature two crew cabins, a spacious galley and a nav station. The area is served by a dedicated companionway to ensure the privacy of owners and their guests.

Far Blue has been very well maintained. Significant refits in 2017 and 2015 included rigging system replacement, engine, generator and propeller replacement, new B&G electronics package, new interior appliances, transom, mast and boom repainting, new exterior upholstery and many other works.

Basic Information

Category: Cruising Sailboat

Sub Category: Sloop

Model Year: 2002

Year Built: 2002

Refit Year: 2015

Refit Type: Full electronic replacement, new standing rigging and runnin rigging, new engine, new gearbox, new propeller, new engine and generator batteries, new battery chargers abd service alternators

Country: Italy

Dimensions

LOA: 72' 0" (21.93m)

LWL: 59' 9" (18.21m)

Beam: 18' 10" (5.74m)

Min Draft: 9' 2" (2.77m)

Speed, Capacities and Weight

Cruise Speed: 8 Kts. (9 MPH)

Max Speed: 10 Kts. (12 MPH)

Displacement: 70547.92384 Pounds

Water Capacity: 1180.056556284 Gallons

Fuel Capacity: 1549.897429084 Gallons

Accommodations

Total Cabins: 3

Total Berths: 6

Sleeps: 6

Total Heads: 3

Captain Cabin: True

Crew Cabin: 2

Crew Berths: 4

Crew Sleeps: 4

Crew Heads: 1

Hull and Deck Information

Hull Material: Composite Fiberglass

Deck Material: Composite Fiberglass

Hull Color: BLUE

Hull Finish: Fiberglass

Hull Designer: Farr Yacht Design

Exterior Designer: Farr Yacht Design

Interior Designer: Antonio Minniti

Engine Information

Engines: 1

Manufacturer: Iveco

Model: FPT N40-200 HP@2800 rpm

Engine Type: Inboard

Fuel Type: Diesel

PHOTOS



saloon



saloon

saloon



owner's cabin



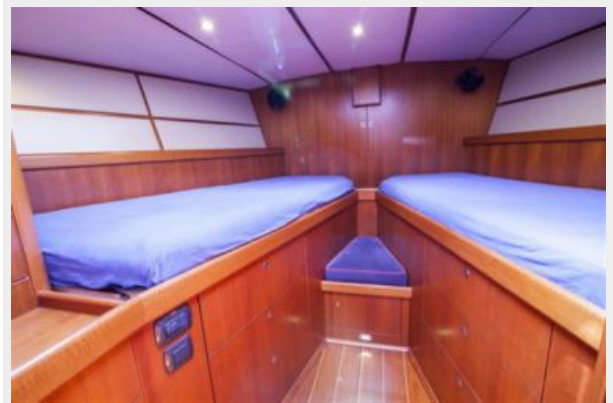
owner's cabin



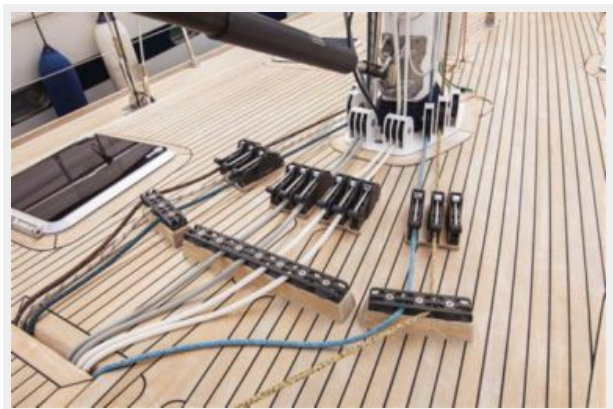
head



guest cabin



guest cabin





CONTACTS

Andrey Shestakov, leading yacht broker of the sales department of Shestakov Yacht Sales Inc. Shestakov Yacht Sales Inc., the official representative of the Miami/Fort Lauderdale FL headquarters.

Contact details

Email: andrey@shestakovyachtsales.com

Web: shestakovyachtsales.com/en/

Telephones

USA: +1(954)274-4435

Office hours

Monday – Saturday: **9:00 - 21:00** EDT

Sunday: **closed**

Address



Harbour Towne Marina, 850 NE 3rd St,
STE 213, Dania, FL 33004