

MOTHER FRICKER — SILVERTON



Builder: SILVERTON

Year Built: 1998

Model: Motor Yacht

Price: PRICE ON APPLICATION

Location: United States

LOA: 35' 0" (10.67m)

Beam: 13' 0" (3.96m)

Max Draft: 3' 3" (0.99m)

Cruise Speed: 17 Kts. (20 MPH)

Max Speed: 24 Kts. (28 MPH)

Our experienced yacht broker, Andrey Shestakov, will help you choose and buy a yacht that best suits your needs **Mother Fricker — SILVERTON** from our catalogue. Presently, at Shestakov Yacht Sales Inc., we have a wide variety of yachts available on our sale's list. We also work in close contact with all the big yacht manufacturers from all over the world.

If you would like to buy a yacht **Mother Fricker — SILVERTON** or would like help answering any questions concerning purchasing, selling or chartering a yacht, please call **+1(954)274-4435**

TABLE OF CONTENTS

TABLE OF CONTENTS	2
SPECIFICATIONS	5
Overview	5
Basic Information	5
Dimensions	5
Speed, Capacities and Weight	5
Accommodations	5
Hull and Deck Information	5
Engine Information	6
DETAILED INFORMATION	7
Silverton Description	7
Exclusions	7
Disclaimer	7
PHOTOS	8
35 Silverton Bow	8
35 Silverton Windshield	8
35 Silverton Port Light	8
35 Silverton Stairs	8
35 Silverton Helm	8
35 Silverton Controls	8
35 Silverton Gauges	9
35 Silverton Helm Seats	9
35 Silverton Hardtop	9
35 Silverton Hard Top	9
35 Silverton Safety Kit	9
35 Silverton Looking Fwd	9
35 Silverton Bench Seating	10
35 Silverton Bench Seating	10

35 Silverton Helm Seating	10
35 Silverton Tower Looking Down	10
35 Silverton Enclosure	10
35 Silverton Enclosure	10
35 Silverton Looking Down	11
35 Silverton Sink	11
35 Silverton Swim Platform	11
35 Silverton Cords	11
35 Silverton Salon Seating	11
35 Silverton Galley	11
35 Silverton Galley Sink	12
35 Silverton Galley Counter	12
35 Silverton Dining Area	12
35 Silverton Stairs	12
35 Silverton Interior Looking Fwd	12
35 Silverton Salon to Stairs	12
35 Silverton Entertainment	13
35 Silverton Master	13
35 Silverton Master TV	13
35 Silverton Bedding	13
35 Silverton Bedding	13
35 Silverton Looking Fwd From Salon	13
35 Silverton Looking Fwd From Galley	14
35 Silverton Wash	14
35 Silverton Sink	14
35 Silverton Guest	14
35 Silverton Guest	14
35 Silverton Guest SR	14
35 Silverton Guest SR	15

35 Silverton Hanging Locker	15
35 Silverton Blinds	15
35 Silverton Guest TV	15
35 Silverton Head	15
35 Silverton Head	15
35 Silverton Guest Sink	16
35 Silverton Guest Shower	16
35 Silverton Guest Shower	16
35 Silverton Storage	16
35 Silverton Panel	16
35 Silverton Panel	16
35 Silverton Electrical	17
35 Silverton Electrical	17
35 Silverton Electrical	17
35 Silverton Engines	17
35 Silverton Electrical	17
35 Silverton Electrical	17
35 Silverton Electrical	18
35 Silverton Port Profile	18
35 Silverton Running	18
35 Silverton Electrical	18
CONTACTS	19
Contact details	19
Telephones	19
Office hours	19
Address	19

SPECIFICATIONS

Overview

This is a well cared for great family cruiser! With two staterooms and two heads and enough room to sleep even a few more. Great layout, galley, back deck and bridge. The bow is safely accessed from the bridge. A davit and cradle make this a great boat to anchor out and explore by tender. This boat is going to make some growing family happy being on the water!

Basic Information

Category: Motor Yacht

Model Year: 1998

Year Built: 1998

Country: United States

Dimensions

LOA: 35' 0" (10.67m)

Beam: 13' 0" (3.96m)

Max Draft: 3' 3" (0.99m)

MFG Length: 41' 4" (12.60m)

Speed, Capacities and Weight

Cruise Speed: 17 Kts. (20 MPH)

Max Speed: 24 Kts. (28 MPH)

Displacement: 21000 Pounds

Water Capacity: 100 Gallons

Holding Tank: 68 Gallons

Fuel Capacity: 286 Gallons

Accommodations

Total Cabins: 2

Total Berths: 2

Hull and Deck Information

Hull Material: Fiberglass

Engine Information

Manufacturer: Crusader

Engine Type: Inboard

Fuel Type: Gas/Petrol

DETAILED INFORMATION

Silverton Description

One of the top selling boats in her class, the Silverton 352 Motor Yacht employs the "SideWalk" deck configuration made popular in previous Silverton models. This unusual design, which replaces the side decks with a set of molded steps running down both sides of the house, gives the 352 a spacious full-beam salon. Built on a solid fiberglass modified-V hull, the two-stateroom floorplan is arranged with a mid-level galley and dinette and double berths in both staterooms. This is a huge interior for a 35-footer, and the salon dimensions can be easily compared to those of a much larger boat. Both heads are fitted with separate showers and the galley has plenty of counter space and storage. An aft-deck wet bar was standard along with a hardtop, and there's seating for six on the flybridge. Additional features include a curved staircase from the swim platform to the aft deck and a spacious engine room. Big-block 330hp engines cruise the at 16 knots and tops out at 24 knots WOT.

Exclusions

Owner's personal belongings.

Disclaimer

The Company offers the details of this vessel or yacht in good faith but cannot guarantee or warrant the accuracy of this information nor warrant the condition of the vessel. A buyer should instruct his representatives, agents, or his surveyors, to investigate such details as the buyer desires validated. This vessel or yacht is offered subject to prior sale, price change, or withdrawal without notice.

PHOTOS

35 Silverton Bow



35 Silverton Windshield



35 Silverton Port Light



35 Silverton Stairs



35 Silverton Helm



35 Silverton Controls



35 Silverton Gauges



35 Silverton Helm Seats



35 Silverton Hardtop



35 Silverton Hard Top



35 Silverton Safety Kit



35 Silverton Looking Fwd



35 Silverton Bench Seating



35 Silverton Bench Seating



35 Silverton Helm Seating



35 Silverton Tower Looking Down



35 Silverton Enclosure



35 Silverton Enclosure



35 Silverton Looking Down



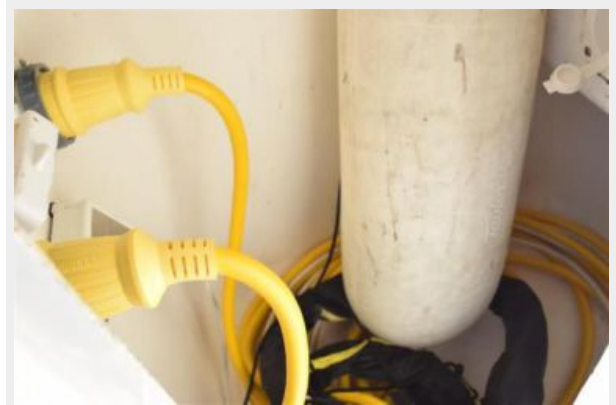
35 Silverton Sink



35 Silverton Swim Platform



35 Silverton Cords



35 Silverton Salon Seating



35 Silverton Galley



35 Silverton Galley Sink



35 Silverton Galley Counter



35 Silverton Dining Area



35 Silverton Stairs



35 Silverton Interior Looking Fwd



35 Silverton Salon to Stairs



35 Silverton Entertainment



35 Silverton Master



35 Silverton Master TV



35 Silverton Bedding



35 Silverton Bedding



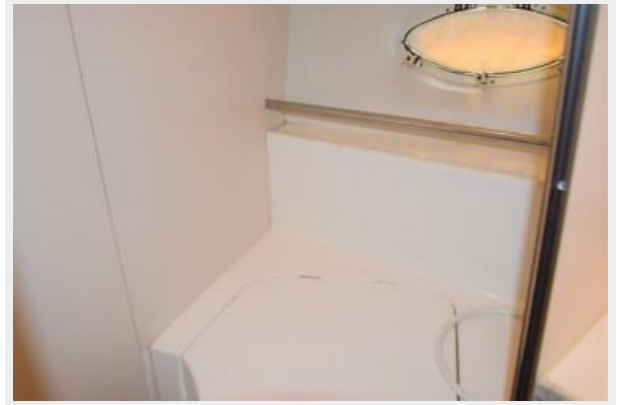
35 Silverton Looking Fwd From Salon



35 Silverton Looking Fwd From Galley



35 Silverton Wash



35 Silverton Sink



35 Silverton Guest



35 Silverton Guest



35 Silverton Guest SR



35 Silverton Guest SR



35 Silverton Hanging Locker



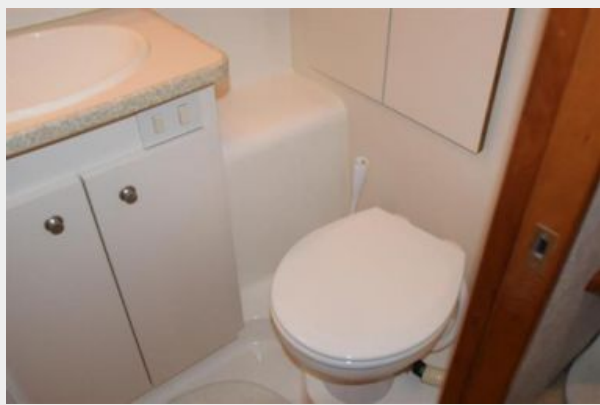
35 Silverton Blinds



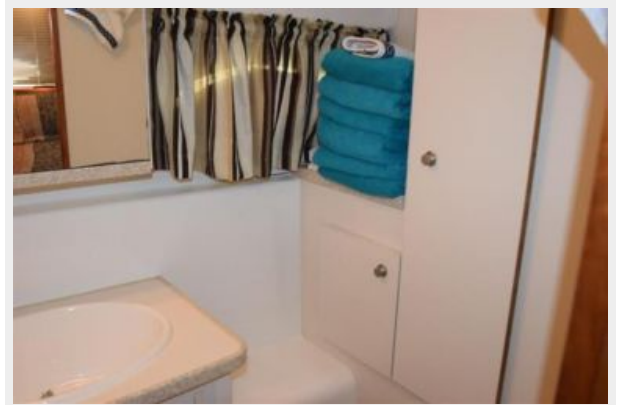
35 Silverton Guest TV



35 Silverton Head



35 Silverton Head



35 Silverton Guest Sink



35 Silverton Guest Shower



35 Silverton Guest Shower



35 Silverton Storage



35 Silverton Panel



35 Silverton Panel



35 Silverton Electrical



35 Silverton Electrical



35 Silverton Electrical



35 Silverton Engines



35 Silverton Electrical



35 Silverton Electrical



35 Silverton Electrical



35 Silverton Port Profile



35 Silverton Running



35 Silverton Electrical



CONTACTS

Andrey Shestakov, leading yacht broker of the sales department of Shestakov Yacht Sales Inc. Shestakov Yacht Sales Inc., the official representative of the Miami/Fort Lauderdale FL headquarters.

Contact details

Email: andrey@shestakovyachtsales.com

Web: shestakovyachtsales.com/en/

Telephones

USA: +1(954)274-4435

Office hours

Monday – Saturday: **9:00 - 21:00** EDT

Sunday: **closed**

Address



Harbour Towne Marina, 850 NE 3rd St,
STE 213, Dania, FL 33004