

LONG AWEIGHTED — LAZZARA



Судостроитель: LAZZARA

Год постройки: 2008

Модель: Моторная яхта

Цена: ЦЕНА ЯХТЫ ПО ЗАПРОСУ

Местонахождение: United States

Длина общая: 116' 0" (35.36m)

Ширина: 23' 0" (7.01m)

Макс. осадка: 5' 6" (1.68m)

Крейс. скорость: 21 Kts. (24 MPH)

Макс. скорость: 27 Kts. (31 MPH)

Купить Long Aweighted — LAZZARA а также выбрать подходящую вам яхту из нашего каталога яхт вам поможет опытный яхтенный брокер Андрей Шестаков. На сегодняшний день компания Shestakov Yacht Sales Inc. имеет большое количество яхт в собственном списке продаж, а также тесно сотрудничает со всеми крупными яхтенными производителями по всему миру.

Для того чтобы купить яхту Long Aweighted — LAZZARA а также проконсультироваться по любому вопросу связанному с покупкой, продажей, чартером яхт позвоните по телефону **+7(918)465-66-44**.

ОГЛАВЛЕНИЕ

ОГЛАВЛЕНИЕ	2
ХАРАКТЕРИСТИКИ	4
Обзор	4
Основная информация	4
Размеры	4
Скорость, вместимость и масса	5
Размещение	5
Корпус и палуба	5
Информация о двигателе	5
ПОДРОБНОЕ ОПИСАНИЕ	6
Key Features	6
Main Salon	6
Dining Area	7
Galley	7
Dinette	8
Day Head	8
Raised Pilothouse/Electronics	9
Aft Deck and Transom	10
Main Deck	11
Flybridge	12
Foyer	13
Master Stateroom and Head	13
Forward VIP Stateroom	15
Port and Starboard VIP Staterooms with Ensuite	16
Mid VIP Stateroom with Ensuite	17
Crew Staterooms and Lounge	18
Mechanical	21
Electrical	23

Construction	24
Tender and Toys	24
Exclusions	25
Disclaimer	25
Исключения	25
Отказ от ответственности	25
ФОТОГРАФИИ	26
КОНТАКТЫ	46
Контактная информация	46
Телефоны	46
Время работы	46
Адрес	46

ХАРАКТЕРИСТИКИ

Обзор

Key Features: Full paint job (August 2016), 5 staterooms, Zero Speed stabilization, low hours!

Most Turn-Key Motor Yacht in her class! All services and upgrades complete. Bottom paint, zincs, prop speed completed 4/2018.

LONG AWEIGHTED (2008 Model Lazzara 116) affords you the opportunity to escape to the water on a true pedigree yacht that only comes around once in a lifetime. Very few yachts can match the endless features LONG AWEIGHTED has and none can match the statement she makes everywhere she goes. Her exterior styling is a combination of long sweeping modern lines with timeless design touches everywhere you look. In near perfect condition LONG AWEIGHTED has been tirelessly maintained by a full time crew from day one. Continual upgrades and improvements along with detailed meticulous maintenance records speak to the owners desire to keep LONG AWEIGHTED perfect at any cost. LONG AWEIGHTED offers you the ability to bring the entire extended family and guests with her five staterooms accommodating twelve. In addition you can be comfortable knowing you and your guests will be catered to by a crew of five from the crew quarters three staterooms and separate crew lounge. LONG AWEIGHTED offers an endless amount of entertaining options including hydraulic swim platform, Jacuzzi, Boxee TV system, iPad control systems, forward facing underwater camera and so much more. The ZERO speed stabilizers will keep you in perfect comfort. The time you spend on her will not only be never ending enjoyment but offer you a break from the everyday. LONG AWEIGHTED, your great escape awaits you.

Основная информация

Тип судна: Моторная яхта

Модельный год: 2008

Год постройки: 2008

Страна: United States

Размеры

Длина общая: 116' 0" (35.36m)

Ширина: 23' 0" (7.01m)

Макс. осадка: 5' 6" (1.68m)

Скорость, вместимость и масса

Крейс. скорость: 21 Kts. (24 MPH)

Макс. скорость: 27 Kts. (31 MPH)

Водоизмещение: 245000 Pounds

Вместимость воды: 600 Gallons

Вместимость сточного бака: 380 Gallons **Объем топливного бака:** 4100 Gallons

Размещение

Всего кают: 5

Всего коек: 5

Спальные места: 12

Всего ком. состава: 2

Каюты экипажа: 5

Койки экипажа: 5

Спальных мест экипажа: 5

Корпус и палуба

Материал корпуса: Fiberglass

Информация о двигателе

Двигатели: 2

Производитель: MTU

Модель: Series 2000 16 cyl

Тип двигателя: Inboard

Тип топлива: Diesel

ПОДРОБНОЕ ОПИСАНИЕ

Key Features

LONG AWEIGHTED is an American Made Luxury Yacht. She accommodates up to 12 Owners/Guests in 5 Staterooms, each with en suite (heads & showers). Separate crew quarters aft sleep up to 5 in 3 staterooms with 2 heads and crew galley.

Highlights:

- 3,000 hour engine service completed
- **ZERO speed stabilizers**
- Atlas Power converter - rebuilt
- Satin finished maple toned work throughout
- Custom home-styled country kitchen galley perfect for catering
- Lutron Homeworks processor controlled automated scene lighting system
- Alagae X fuel treatment system
- 3000 engine hours MTU service completed
- Reconditioned generators injectors
- New generator fuel pumps
- Repainted nonskid on main deck - 10/2017
- Props removed, cleaned and new Prop Speed applied - 8/2017
- New Exterior cushions - 2012/2015, bow pad 2016
- **Full Paint 2016 - Lu Marine**
- Added 360 degree camera on hardtop 2016
- Added underwater forward facing camera 2015
- Huper Optic ceramic 50 clear film - installed pilothouse windows

Main Salon

Once aboard you are invited to enter the Main Salon through a large stainless framed glass door by simply pushing a button. The air operated door quickly responds and you are greeted with the custom interior which will leave you breathless. The interior wood has a light maple toned satin finish that is simple yet elegant. From floor to ceiling on the port and starboard sides are a series of wall sconces that were custom crafted exclusively for LONG AWEIGHTED. The flooring is covered as far as the eye can see with a beautiful golden Cherry wood. The entire Main Salon is infused with a jade and emerald color delicately displayed on the rugs, chairs and pillows. All of this comes together to set the tone for entire yachts perfectly designed interior.

As you walk through the Main Salon you can envision hosting a dozen of your friends and family with each person having plenty of space. Whether sitting at the bar on one of the chairs, playing chess at the game table or simply relaxing on one of the spacious couches you quickly realize that this room was made for entertaining. For dinner, there will be enough space to comfortably

seat up to 8 people at the dining room table and up to 4 people at the adjacent game table.

- Port upholstered sofa and love seat
- Walls upholstered in standard fabric
- Port and starboard veneered furniture cabinets with wood veneered tops
- Horizontal surfaces done in wood veneer and marble
- Serving bar, veneered wood base with granite top, to include icemaker, refrigerator, wine cooler and storage for barware and accessories
- Bar stools (3)
- End table in veneer
- Entertainment cabinet to include 50" TV with surround sound stereo and DVD/CD/VCR player
- Floor to ceiling china cabinets in veneer with mirrored backs and shelves
- Fully upholstered occasional chair in standard fabric
- Cocktail table
- Lamps for end tables (2)
- Cherry plank flooring, satin finish
- Chemically strengthened windows, 3/8" laminated glass
- Full length, curved double sliding glass doors to aft deck
- Veneered mullions at side windows
- Overhead lighting
- Window tinting in main salon

Dining Area

- Oval dining table with leaf and six chairs, expands to seat eight
- Veneered china buffet cabinet to include silverware drawer and china fasteners
- Upper china cabinets, veneered, with glass doors, mirrored back and custom acrylic stemware holders
- Wood storage cabinets, port and starboard
- Recessed ceiling lighting over dining table
- Walls upholstered in standard fabric
- Cherry plank flooring, satin finish
- Windows with 3/8" chemically strengthened laminated glass
- Access to lower level aft accommodations
- Access to hallway leading to galley

Galley

In order to properly prepare a meal of that magnitude a Galley that is expertly designed would be a must and LONG AWEIGHTED does not disappoint. The Galley was made to assist the best chefs in creating the perfect meal. There is additional seating area for those mornings when you

want to grab a quick coffee or for those times when the crew needs a separate area to eat.

- Stainless double undermount sinks and an island counter space for ease of maneuverability,
- Granite galley countertops with commercial grade stainless steel backsplash and hood create two long serving areas (upgraded 2015)
- Grohe single lever faucet
- Insta-hot water dispenser
- Wood cabinets
- Wood pantry cabinet
- Cherry plank flooring, satin finish
- Dishwasher
- Five-burner electronic glass cook top new 10/2017
- Micro convection oven w/exhaust fan
- 27" built-in oven w/convection feature
- Trash compactor
- Sub Zero commercial refrigerator/freezer combo
- Ice maker
- Windows with 3/8" chemically strengthened laminated glass
- Pleated shades and valances in standard fabric at windows
- Walls upholstered in standard Majilite 2016
- Smoke detector in hallway leading to galley
- Scottsman ice makers in galley, aft deck, and flybridge - new 2016

Dinette

- Seating for six in custom contoured settee
- Standard granite top on dinette table
- Cabinets forward of seating group
- 24" LCD television
- Cherry plank flooring, satin finish
- Walls upholstered in standard fabric 2016
- Pleated shades and valances in standard fabric at windows
- Easily accessible storage forward of settee dinette with pneumatic lift lids, upholstered in Majilite

Day Head

- Wall mounted vanity in veneer
- Custom stainless sink
- Designer quality faucet
- Mirrored wall above vanity

- Designer quality towel ring and fixtures
- Marine head system
- Standard wall covering
- Head door veneered
- Bronze plexi-mirrored ceiling with crown molding

Raised Pilothouse/Electronics

- Fully equipped control station
- Alarms for engines, gears, bilge, and generators, audible and visible
- Electronic engine controls w/combination clutches and throttles
- Bow thruster control
- Custom forged aluminum steering wheel
- Power assisted hydraulic steering
- Windshield wipers and washers, 3 ea
- Raised helm flat, electronics flat, and console flat in wood veneer
- Dash below windows in vinyl
- Captain's helm seat, Stidd, electric actuation, in leather
- Cherry flooring, gloss finish
- Guest helm settee behind helm in Ultraleather upholstery
- Captain's desk with drawers, veneered, Stidd chair
- Large storage area with drawers for chart, manuals, etc.
- Bookshelves above settee in veneer
- All interior surfaces on walls and mullions covered with Majilite
- Glass front cabinets port and starboard
- Chemically strengthened laminated front windshield glass, 1/2" thick
- Access to lower level hallway
- Access to flybridge companionway hatch
- Extra red lights
- Humidor
- Samsung 36" LCD
- Huper Optic ceramic 50 clear film - installed pilothouse windows

Electronics:

- Glass cockpit navigational electronics display with LCD flat panels
- Shipboard PC based monitoring system with latest ISIS software
- Entire camera system throughout feeds to DVR for recording and transmits live
- Garmin 7212 - pilothouse
- Garmin 6208 - flybridge
- Digital controls to engine room blowers
- Nobeltec Triton software
- SAT XM

- Boxee media servers streaming movies and music
- iPad to control the Audio Visual System
- 360 degree camera on hardtop 2016
- Underwater forward facing camera 2015

Aft Deck and Transom

Aft Deck and Transom

The grand aft deck is designed for entertaining or enjoying cocktails at sunset. There is a walk behind bar with bar stools, a massive teak table for seating up to eight and a TV that can be rotated to the best viewing angle for all. From the aft you have the option of descending down to the transom cockpit via teak covered spiral stairs on either the port or starboard side. The transom cockpit is yet another innovative feature of LONG AWEIGHTED. This area allow access to the crew quarters, storage for dive equipment, a garage to house the personal watercraft and direct access to the hydraulic swim platform. With this design all of the toys and tender can be launched and ready for fun quicker than any other yacht in its class.

- Teak aft deck (new teak on stairs, sport deck, swim platform)
- Docking controls electronic engine controls with combination clutches, throttles and bow thruster, port and starboard stations
- Access to main salon through curved double sliding glass doors air operated
- Access to transom sport deck
- Access to flybridge via enclosed fiberglass spiral stairs
- Access to crew quarters via fiberglass spiral stairs
- Table with teak top, stainless steel posts, for aft deck seating
- Aft deck seating group upholstered in standard Sunbrella fabric
- Wood aft deck side chairs w/cushions (4)
- Aft deck fiberglass bulwarks
- Stainless steel handrails
- Bulwark boarding gates, port and starboard
- Eight lights mounted in hardtop, with dimable lighting switch 2016
- Refrigerator 2016
- Two stereo speakers in hardtop
- Step up access to wide body deck way, access to spring line cleats
- Stainless steel aft deck cleats w/hawsers
- Aft deck wash down
- American flag and staff assembly
- Tracey boarding ladder and Marquipt hook-type ladder/swim ladder

- Spiral molded stairways, port and starboard
- Large cockpit area
- Fresh water hot and cold shower
- Hinged stanchion rail system, 2"

- Access door to transom pod and storage compartment
- Fiberglass bulwark on aft end of sport deck with stainless steel bulwark rails
- Access door to crew's quarters
- **Hydraulic swim platform**
- **Personal watercraft storage pods, port storage and starboard, with hydraulically activated pod doors, 24-volt hydraulic pump**
- Personal watercraft launching system with 24-volt DC electric hoist winches

Main Deck

- Twin vertical hydraulic anchor windlasses, Maxwell 4500, one side with 350' of high test hot galvanized steel 1/2" other side with 200' of high test hot galvanized steel 1/2", new 5/8" chain, swivels, paint, rebuilt 2016
- Twin stainless breastplates for hull anchor pockets with two 200lb Poole polished stainless steel anchors
- Automatic anchor chain wash down system
- Port and starboard, Maxwell 22 warping winches, 24-volt, located on aft deck 2016 rebuilt
- Bulwark boarding gates, port and starboard, forward and aft
- Custom designed stainless steel cleats, 2 at bow - 24", 2 at stern - 18", 4 amidships - 16", and 2 at transom deck - 18"
- Forward bow deck seating with hydraulic lift lid to access storage beneath, 24-volt hydraulic pump, cushions 2016
- Main deck pantagraph doors, port and starboard
- Fiberglass bulwarks
- Stainless steel bow rails
- Deck fills, water and waste removals (port and starboard)
- Fuel fills aft (port and starboard)
- Burgee staff with flag
- Fore and aft deck wash downs, fresh water-3 and salt water-2
- Stainless steel hawse pipes
- Dockside water connections w/regulators
- Dockside water connection (2) with pressure reducing valves – forward at bow and aft port deck side.
- Fresh water wash down on fore deck, stern deck and flybridge, quick disconnect type
- Frameless windows throughout
- Rub rail, extruded vinyl and stainless steel rub strip, using adjustable Harken track/car system for fender placement . All hardware caulked
- **Exterior canvas package - new**
- **Repainted non-skid on main deck 10/2017**

Main Deck Utility Room:

- One top loading chest freezer, 10-cu. ft capacity carpet freezer

- Electrical distribution panels for main salon and galley (fridge/freezer)
- Hot water heater
- Lutron Homeworks lighting control system hardware
- Smoke detector
- Wine rack

Main Deck Laundry Center:

- Washer and dryer, Bosch, with storage for laundry products (washer new 2016)
- Wall mounted ironing board
- Corian counter top

Flybridge

The flybridge can be accessed either from the aft deck via a teak tread spiral staircase or from the Pilothouse sliding hatch which is air operated for ease of opening. The flybridge is yet another example of never ending options that LONG AWEIGHTED offers. On the port side is a walk behind bar complete with bar stools ice maker, refrigerator and grill (2016). On the starboard side directly across is a booth seating arrangement with large table. Aft of the bar on the port side is an extended seating group and table. Positioned perfectly in the aft center of the flybridge is a large Jacuzzi. The clever design of the single davit allows it to be completely hidden out of view as it is integrated into the side wall of the flybridge. This allows for maximum deck space to be used by you and your guests. Once the tender is launched the deck space increases even more allowing you to place four lounge chairs along the back. With the integrated hardtop covering half of the flybridge, you will have the choice of being under cover or out enjoying the sun. New additions include new lighting, speakers, Sunpad, and Stidd Chair.

- Fully equipped control station w/ clutches, throttles and bow thruster controls
- Chemically strengthened 5/16" thick laminated glass windscreen with stainless rail
- Custom fiberglass hardtop or arch with pre-engineered locations for electronics antennas, radar, lighting, horns and navigational lighting
- New lighting
- Speakers
- Sunpad
- Teak resurfaced
- Hydraulic single davit, 2000lb capacity, with remote controls, integrated into flybridge styling line
- (3) Stidd Helm chairs (two singles, one double) 2016
- Banana shaped bar with, sink, and dual Miele electric grills (2016) on the port side.
- Sub Zero refrigerator - new 2016
- Wine-cooler starboard
- Four stools at bar

- Counter top forward of the bar on the port side with icemaker and cabinet underneath
- Booth style seating for four on the starboard side with a table between the seats - all on a raised platform for visibility
- Jacuzzi tub with sunpad lounging area over top of tub - new cushions
- Outdoor-seating group, split into port and starboard sections with teak table for each section
- Storage cabinet with Corian top on the starboard side between the booth seating and the aft seating group.
- Storage for yacht dinghy or 3 Jet Skis
- Access sliding hatch to pilot house - air actuated
- Access to aft deck via spiral stairs

Foyer

To access the Master Stateroom and additional VIP staterooms, you descend down the aft stairwell to the foyer where you are greeted by a 4'x 6' solid piece of onyx flooring. Amazingly the onyx completely lights up from underneath with a futuristic LED light tape (4/2017). This light permeates the onyx and amplifies the entire piece highlighting the jade and emerald colors found throughout it.

- Smoke alarm
- Stainless steel stair handrail
- Foyer credenza in veneer with wood veneered top and mirror
- Walls upholstered in standard fabric
- Storage for central vacuum
- Access to master stateroom and guest staterooms
- Enclosed storage area with door under stairwell
- Onyx flooring with LED light tape underneath

Master Stateroom and Head

Entering the Master Stateroom from the foyer you step through a double door entry and are treated to an expansive room. The sheer size of the stateroom is overwhelming enough but the five feet of glass window on either side of the room gives you an open feeling that is simply amazing. The King size bed sits in the middle of the room with large nightstands on either side. The port side of the Master Stateroom has two large dressers connected by a vanity area. To starboard side are two additional dressers split by a perfectly positioned love seat.

The Master walk in closet complete with storage unit, shelves, and hanging rods is accessed from the forward port side of the stateroom.

Aft of the stateroom is a full beam master head that stretches nearly 22' in width. The full height walk in shower is enclosed in all glass and comes complete with a floor to ceiling water jet system and shower head combination unit. Floor to ceiling cabinets on either side of the his and

her sinks offer endless amounts of storage. Again LONG AWEIGHTED doesn't disappoint and the glass bowl sinks that are lit from the underneath create yet another stunning visual affect that this yacht is famous for. You will also have complete privacy from the main area of the Master Head in a separate toilet room to the starboard side.

Master Stateroom Features:

- Double door access to master stateroom from lower foyer
- Veneered master cabin double doors
- Walk around king size bed with drawer storage below
- One innerspring mattress
- Veneered night stands, port and starboard, with wood top inserts
- Bed base with wood veneer trim
- Padded headboard
- Large bath closet
- Shower heads
- Veneered dressers, four, two on port and two on starboard
- Vanity desk on port side with veneered top
- Vanity chair in standard fabric
- Settee on starboard side in standard fabric
- Two veneered open bookcases, port side
- Two armoires with veneered doors, starboard side
- 42" Plasma TV
- Surround sound stereo and DVD/CD/VCR player
- Fabrica carpeting throughout, installed over SoundDown insulating padding
- Indirect lighting
- Six panoramic fixed windows, three to port, three to starboard, with shoji screens and blackout shades
- Wooden valance above windows
- Wall mounted sconces or lamps on nightstands
- Telephone outlet
- Walls upholstered in standard fabric
- Large walk-in closet, with double hanging rods and shelf organizer
- Full height mirror on inside of walk-in closet door
- Personal safe
- Curved wood canopy over head of bed
- Headliner, removable, in Majilite Winter White
- Gold plated, cast brass cabin door handles
- Gold plated wall electrical switch plates, except for Lutron switch panel
- Mirror wall above headboard

Master Head - His/Hers:

- Large Shower with marble walls and deck
- Marble floor

- Twin vanities, one for both his and her heads, each with marble top and under mount glass bowl sink with back lighting
- Designer quality faucets, fixtures and towel bars
- Mirrored storage cabinets near sinks
- Lighted glass front towel storage cabinets on each side
- Enclosed toilet room
- Full height linen closets on port and starboard sides
- Wood storage cabinet below sinks with doors and drawers
- Exhaust fans
- Marine toilet in separate water closet
- Additional wall storage cabinets in water closet
- 120 volt receptacles with ground fault
- LED lighted switches
- Overhead and indirect lighting, with switches
- Robe hooks on veneered doors
- Veneered cabin door accessing head from stateroom
- Veneered cabin door accessing separate toilet room

Forward VIP Stateroom

As you move down the forward stairs you come to the first of four VIP staterooms. This room offers a queen size bed positioned just in the center of the room. On either side are upper and lower cabinets giving you ample storage. Each stateroom features a head complete with marble floor, counter top, and full height walk in shower.

Forward VIP Stateroom Features:

- Walk-a-round queen size bed with storage drawers below
- Innerspring mattress on bed
- Bed base in wood veneer
- 32" LCD TV
- Stereo, DVD/CD in bookshelf
- Dressers port and starboard
- Upper cabinets, port and starboard
- Mirrored hanging-locker lined with cedar accents
- Upholstered settee chair
- Smoke detector
- Private access to head
- Receptacle (120 volt)
- Telephone outlet
- Wall mounted reading lights
- Indirect lighting under bed
- Fabrica carpet with SoundDown insulating padding 8/2017

- Flush mounted halogen lighting in headliner
- Veneered cabin door
- Veneered door accessing head
- Headliner, removable, in Majilite Winter White, new 8/2017
- Gold plated wall electrical switch plates
- Overhead access hatch to foredeck
- New carpeting 2017

Forward VIP Stateroom Head:

- Private access to head from stateroom
- Light marble floor
- Light marble vanity top with under mount sink
- Mirrored medicine cabinet over vanity
- Stall shower with Grohe fixtures
- Brass faucets, fixtures, towel bar/ring
- Marine toilet
- Exhaust fan
- 120-volt ground fault receptacle
- Halogen lighting overhead with LED switches
- Double robe hook on veneered door
- Standard wall covering

Port and Starboard VIP Staterooms with Ensuite

Forward from the foyer you are invited to enter the port and starboard VIP staterooms. These staterooms are evenly afforded a large living area complete with queen bed, nightstand, double door cedar lined closets and the same entertainment system found throughout the yacht with access to movies and music via the iPad. The ingenious part of these rooms is in the fact that they can be used as two separate large staterooms or the center wall can be folded back to create one massive second Master Stateroom complete with his and her head. It is a truly remarkable feature that nearly no other yacht this size can offer.

Both Staterooms Contain:

- Walk-a-round full size bed with storage drawers below
- Innerspring mattress on bed
- Bed base with wood veneer trim
- Padded headboard
- Night stand in veneer w/veneered top
- 20" Flat panel LCD TV
- Stereo, DVD/CD in bookshelf – surround sound
- Corner storage cabinet, veneered
- Veneered bookcase with mirrored back on out board wall,

- Mirrored hanging-locker lined with cedar accents
- Two panoramic fixed windows
- Private access to head
- Receptacle (120-volt)
- Telephone outlet
- Indirect lighting under bed and bookcases
- Fabrica carpet with SoundDown insulating padding
- Flush mounted halogen lighting in headliner
- Pleated shades and valances in standard fabric at windows
- Veneered cabin door
- Veneered door accessing private head
- Hook on closet door
- Headliner, removable, in Majilite Winter White
- Gold plated, brass cast cabin door handles
- Gold plated wall electrical switch plates
- New carpet 2016

VIP Stateroom Heads (2) contain:

- Private access to head from stateroom
- Crema Marfil marble floor
- Crema Marfil marble vanity top with under mount sink
- Mirrored medicine cabinet over vanity
- Stall shower with Grohe fixtures, marble walls
- Brass faucets, fixtures, towel bar/ring
- Marine toilet
- Linen storage cabinet
- Exhaust fan
- 120-volt ground fault receptacle
- Halogen lighting overhead with LED switches
- Robe hook on veneered door
- Standard wall covering

Mid VIP Stateroom with Ensuite

Once back in the Foyer you can gain access to the mid VIP suite offering the flexibility to sleep two each in a single berth or four when the top pulman berths are lowered. This room perfectly offers you different combinations of sleeping arrangements so that everyone is most comfortable. In addition the mid VIP stateroom has its own head as well. In total that is four VIP staterooms all with ensuite heads and each with the same amenities.

Mid VIP Stateroom:

- (2) Full size bed with storage drawers below

- (2) Pullman full size beds that fold down from wall
- Innerspring mattresses on bed
- Bed bases in wood
- Padded headboards
- Night stand in veneer w/veneered top
- 20" Flat panel LCD TV
- Stereo, DVD/CD
- Veneered bookcase on out board wall
- Mirrored hanging-locker lined with cedar accents
- Two panoramic fixed windows
- Private access to head
- Receptacle (120 volt)
- Telephone outlet
- Wall mounted reading lights
- Fabrica carpet with SoundDown insulating padding
- Flush mounted halogen lighting in headliner
- Pleated shades and valance in standard fabric at windows
- Veneered cabin door
- Veneered door accessing private head
- Hook on closet door
- Headliner, removable, in winter white
- Gold plated, brass cast cabin door handles
- Gold plated wall electrical switch plates

Mid Stateroom Head:

- Private access to head from stateroom
- Light marble floor
- Light marble vanity top with under mount sink
- Stall shower with Grohe fixtures, Emperador Light marble walls
- Faucets, fixtures, towel bar/ring
- Marine toilet
- Toiletry & linen storage in vanity
- Exhaust fan
- 120-volt ground fault receptacle
- Halogen lighting overhead with LED switches
- Robe hook on veneered door
- Custom wall covering

Crew Staterooms and Lounge

Crew Staterooms and Lounge

For those times when you have LONG AWEIGHTED completely full of friends and family you will

appreciate the opportunity to have a crew of five aboard. There are three staterooms and two heads that will accommodate a crew of five. In addition there is a crew lounge and seating area.

The crew staterooms can be accessed from either the aft deck or the transom. From the crew area you access the engine room which is outfitted with the nearly every imaginable piece of equipment including air conditioning to create a comfortable work environment.

Captains Quarters:

- Full size berth against the bulkhead
- Pullman berth
- Bed base with wood veneer
- Storage drawers below
- Innerspring mattress on bed
- Walls upholstered in standard fabric
- Hanging locker
- (2) Portlights
- Overhead storage locker outboard
- Wall mounted reading lights
- Hanging locker with mirrored door
- Cabin door, veneered
- Indirect and overhead lighting
- Private access to head
- 110-volt receptacle
- Fabrica carpet with SoundDown insulating padding
- 15" LCD TV, Satellite Receiver fed from the Crew's lounge and tuner/CD/player
- Private access to head
- Hook on closet door
- Headliner, removable, in Majilite Winter White
- Gold plated, brass cast cabin door handles
- Gold plated wall electrical switch plates

Captain's Head:

- Corian vanity top with under mount Corian sink
- Kohler single lever faucet
- Ceramic tile floor
- Chrome and brass fixtures, towel bars and rings
- Fiberglass shower stall enclosure with door
- Grohe hand held shower fixture
- Marine toilet
- Exhaust fan
- Receptacle, 120-volt ground fault
- Lighting with courtesy switch
- Robe hook on head door

Crew Stateroom 1:

- Upper and lower berths; upper berth can also tilt up and lock when not in use
- Bed base in wood
- Drawer storage under lower berth
- Innerspring mattresses on berths
- Hanging locker
- (2) Port lights
- Indirect and overhead lighting
- Wall mounted reading lights
- Fabrica carpeting with SoundDown insulating padding
- 110-volt receptacle
- 15" LCD TV, satellite receiver fed from the crew's lounge with tuner/CD/player – TV system stereo
- Private access to head
- Veneered cabin door
- Hook on closet door
- Wall mounted emergency flashlight
- Headliner, removable, in Majilite winter white
- Gold plated, brass cast cabin door handles
- Gold plated wall electrical switch plates

Crew Stateroom 2:

- Single berth
- Drawer storage
- Innerspring mattresses on berths
- Hanging locker
- Nightstand with drawer storage
- (2) Port lights
- Indirect and overhead lighting
- Wall mounted reading lights
- Fabrica carpeting with SoundDown insulating padding
- 110-volt receptacle
- 15" LCD TV, satellite receiver fed from the crew's lounge with tuner/CD/player – TV system stereo
- Private access to head
- Veneered cabin door
- Hook on closet door
- Wall mounted emergency flashlight
- Headliner, removable, in Majilite winter white
- Gold plated, brass cast cabin door handles
- Gold plated wall electrical switch plates

Crew Lounge:

- Settee with Corian table
- Counter top with sink
- Refrigerator under counter
- TV 15" LCD, satellite receiver that feeds to Captain's and crew's staterooms with tuner/CD player
- Bosch washer/dryer stacked
- Access to engine room via weather tight door
- Remote pull station for E/R fire suppression system
- Smoke alarm
- Storage cabinets below sink and above settee

Crew Head:

- Corian vanity top with under mount Corian sink
- Mirrored medicine cabinet over vanity
- Kohler single lever faucet
- Ceramic tile floor
- Brass fixtures, towel bars and rings
- Fiberglass shower stall enclosure with door
- Grohe hand held shower fixture
- Marine toilet
- Exhaust fan
- Receptacle, 120-volt ground fault
- Lighting with courtesy switch
- Robe hooks on head door

Mechanical

- **MTU series 2000 16 cylinder diesel engines, 2000 hp** with 3.48:1 reduction gears with three station DDEC controls, MDEC synchronizer, and underwater exhausts. **3,000 hour service completed.**
- MDEC Electronic engine controls - combination clutches and throttles with electronic engine synchronizers
- MDEC electronic engine function displays
- Custom Awlgrip paint on engines 2016
- Underwater engine exhausts with dockside bypass (**new misters**)
- Main engine sea strainers, 5", and oversized, to reduce inlet restrictions
- Engine room blowers, Delta T variable speed (2 each @ 230 volts)
- Acoustical and thermal insulation in engine room
- Chilled water system for air conditioning and heating (new raw water, condensing)
- Bilge pump, 230 volt, Flomax 3 hp, 120 gallons per minute, manifolded to each of the four bilge compartments

- Secondary bilge pumps to evacuate each bilge, Rule 2000 ,24-Volt, 2000 gallons per hour with ultimate senior float switches
- Engine driven emergency hydraulic bilge pump, Flomax, 120 gallons per minute
- Aircraft type stainless steel fuel lines, solid and flexible
- Fuel priming pumps (4) for each engine and generator
- Transfer pump, Oberdorfer, 10 gallons per minute, to transfer fuel from auxiliary fuel tank to main fuel tank (2015)
- Oil-less and service-less house air pump
- Algae X fuel treatment system
- Manifold Racor fuel filters for engines and generators
- Main fuel tank and auxiliary tank, fiberglass construction, hetron fire retardant resin
- 120 volt reversible, with oil quantity gauge and selector valves
- Oil reserve tanks, new and used, 72 gallons each, with deck fills
- Oil changing system for engines, gears and generators, new and used, Oberdorfer pump
- Fire protection system, automatic and manual, USCG EPA approved gas (FM 200) with damper systems on fans and automatic shut down system on fuel to engines and generators
- Fire pump, 230 volt, Flomax 5 hp, with two hose connections on deck (forward under bow deck sunpad and aft in starboard side deck haunch) 100 gallons per minute at 65psi, salt water output, 1 1/2" diameter, with 50 ft. of hose at each location
- Headhunter compressed air marine toilet system
- Holding tanks with access for pump out, one holding tank forward, 380 gallons, and two 40 gallon tanks, port and starboard, for crew
- Three macerator holding tank pumps with overboard or deck discharge, with 240-volt main holding tank pump, plus two 24 volt auxiliary tank pumps
- Pressurized gray water pump out system for main accommodations, with separate high lift pump for draining master tub and engine room sink and dual sump pumps for crew quarters
- Hydraulic steering, power assisted, Jastram, dual engine driven pumps, one port, one starboard, to include automatic changeover to manual helm backup
- Custom integrated hydraulic system for emergency bilge pump, bow thruster, anchor windlass and stabilizer
- Hi-lift mufflers for generators
- Mufflers for engines by-pass and generators
- **Watermaker, Sea Recovery SRC 1800 gallon per day** (60 gallons per hour)
- Primary water heaters, three, total 100 gallons, two @ 40 gallons (4500 watt high output fast recovery coils) each for owners and guests, plus 20 gallon booster heater for master stateroom for redundancy and better hot water delivery circulation. New 20 gal hot water heater added for crew area 2015.
- Water system, pressurized, 230 volt, with dual Headhunter Mach V pumps at 20 gallons per minute, 50 psi. one pump is primary and other is backup pump with manual switchover
- Water filtration system
- Water softener and Spot Zero
- Water tanks, (2) linear polyethylene, FDA approved

- Fresh water outlet in engine room
- Five bladed Nibral Rolla custom CNC machined propellers - **props removed, cleaned and new Prop Speed applied 8/2017**
- Cast bronze air foil shaped propeller "I" struts to reduce resistance
- Bronze underwater thru hulls and sea cocks
- Shafts 4 ½ " Aquamet 22HS
- Dripless shaft logs and rudder post, Tides marine (**new rudder & shaft seals 2015**)
- **Cutlass bearings (2015)**
- Cast stainless steel rudders
- **ZERO Speed stabilizers**, hydraulic, single station, 2 extra large fins (stabilizer gear kits and shafts 8/2017)
- **American Bow Thruster** 50 hp, 16" aperture
- Central vacuum system
- Removable engine room grating
- Compressed air outlet in engine room
- Engine room sink with hot and cold running water
- Workbenches, two, with tools

Electrical

- Two 55kw Onan generators, electronically controlled, with sound shields (7500 hrs as of 4/20/18) 5,000 hour service completed - reconditioned generator injectors and new fuel pumps
- **Atlas Power Converter - rebuilt**
- 230 volt/120 volt/60 hz ship's electrical system
- ISIS PC based computer shipboard monitoring and alarm monitoring system
- Satellite TV, Sea Tel 3004 with 10 satellite receivers

- Alarms for engines, reduction gears, bilges, generators - audible and visible
- Anchor light, 24 volt
- Batteries, heavy duty, maintenance free, 450 amps. 4 banks @ 24-volt: two main engines, two house/generator, all 8-D's
- Bonded electrical system
- Coded wiring system
- Two Charles Industries battery chargers, each 60 amps at 240-volt
- 1.4kw UPS back up power supply
- 100A/240-volt shore power inlets, (2) Aft, (2) Forward
- Total 4 ea 100 amps, 100' shore power cords; two 100 amps, 100' shore power cords with automatic reels, exit on either port or starboard side of the transom; two 100 amps, 100' shore power cords under forward bow deck seating, plus plug-in inlets for cable TV and telephone (cords 1/2016)
- Engine room lights AC/DC
- Efficiently designed electrical load balancing allows for smaller generators and

more efficient night running at light load

- Interior lighting, low voltage AC, with remote control dimming system
- Interior lighting 110 and 24-volts
- **Lutron Homeworks processor controlled automated scene lighting system with three zone coverage: main salon/dining salon; master stateroom and master head; and exterior lighting**
- Emergency DC lighting circuitry in each room
- Two DynaPlates, Mark VIII's, for grounding and lightning protection
- AC and DC master control distribution panel located in engine room with secondary distribution sub-panels (four AC, four DC) located throughout the yacht
- Navigation lights, 24-volts
- Receptacles, 120-volt duplex
- Searchlight, ACR 100 with dual control stations (single control on SkyLounge model)
- Vimar switch plates, receptacles and five zoned smoke detectors
- Telephone and cable TV inlets – Forward and Aft, (2) combination cords
- Intercom system
- Vapor proof battery switches
- Arch lights and bulwark lights 24-volts
- **New Ocean LED underwater lights (9)**

Construction

- Hand laid-up uni-directional fiberglass, with balsa core throughout
- Hull below the waterline double sandwich construction
- Solid fiberglass laminate keel, chines centerline
- Blister resistant gelcoat below water line
- Vinylester resin throughout
- Awlcraft 2000 brand painted urethane finish on exterior 2016 Imron
- Cement reinforced keel
- Balsa core fiberglass reinforced stringer system
- Balsa core bulkheads, floors
- Lower sole isolated using vibration reducing discs under sole for noise reduction
- Stainless steel molding at sheer level
- **New bottom paint 3/2017**
- Carbon fiber grounding shield
- **Full Paint 2016 - Lu Marine**

Tender and Toys

- Yamaha Waverunner 2014

Exclusions

Exclusions to be provided upon request.

Disclaimer

The Company offers the details of this vessel in good faith but cannot guarantee or warrant the accuracy of this information nor warrant the condition of the vessel. A buyer should instruct his agents, or his surveyors, to investigate such details as the buyer desires validated. This vessel is offered subject to prior sale, price change, or withdrawal without notice.

Исключения

При продаже яхты исключаются личные вещи владельца.

Отказ от ответственности

Компания предоставляет описание судна или яхты добросовестно, но не может гарантировать точность этой информации, а также не ручается за техническое состояние. Покупатель должен проинструктировать своих агентов или оценщиков исследовать представленную информацию более подробно, по собственному желанию. Продажа судна или яхты, изменение цены или снятие с продажи будет происходить без предварительного уведомления.

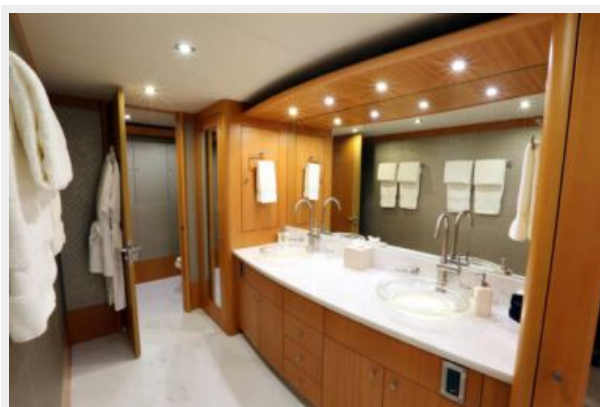
ФОТОГРАФИИ



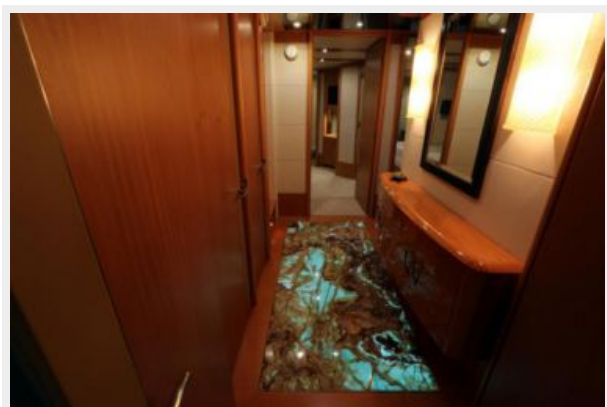




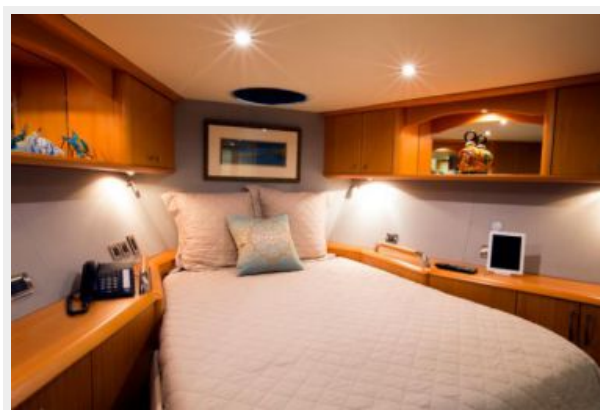
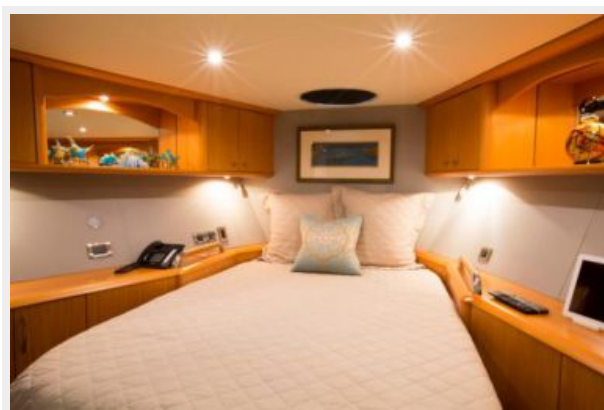


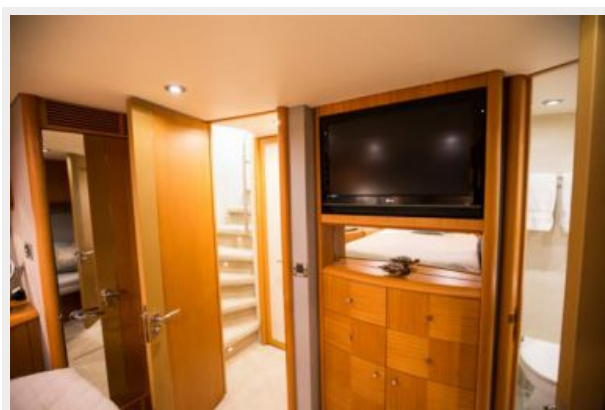




















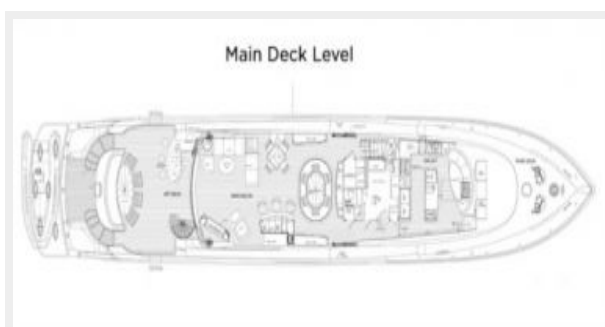
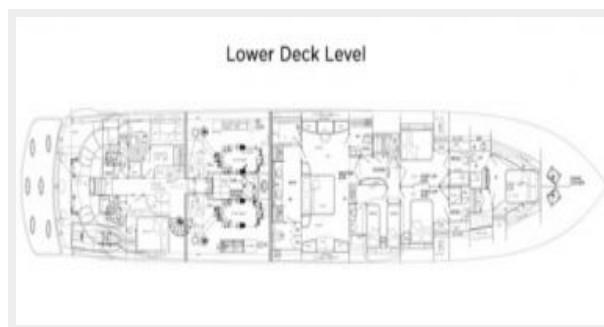
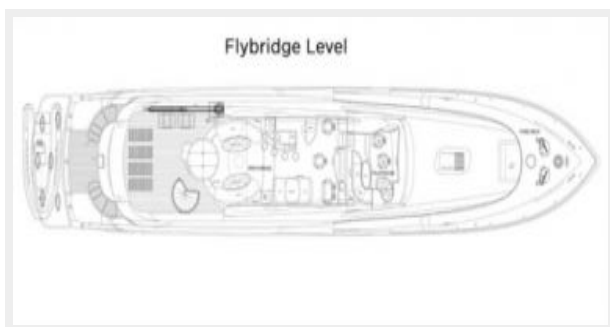












КОНТАКТЫ

Андрей Шестаков (Andrey Shestakov) – ведущий яхтенный брокер отдела продаж яхт и судов компании Shestakov Yacht Sales Inc. Официальный представитель Shestakov Yacht Sales Inc. для русскоговорящих клиентов в центральном офисе компании в Майами/Форт Лодердейл/Флорида/США.

Контактная информация

Email: andrey@shestakovyachtsales.com

Web: shestakovyachtsales.com

Телефоны

Краснодарский край: **+7(918)465-66-44**

США, Майами, Флорида: **+1(954)274-4435**

Время работы

Понедельник – Суббота: **9:00 - 21:00**
EDT

Воскресенье: **Закрито**

Адрес



Harbour Towne Marina, 850 NE 3rd St,
STE 213, Dania, FL 33004