

СОНО — HATTERAS



Судостроитель: HATTERAS

Год постройки: 2000

Модель: Моторная яхта

Цена: ЦЕНА ЯХТЫ ПО ЗАПРОСУ

Местонахождение: United States

Длина общая: 75' 0" (22.86m)

Ширина: 19' 2" (5.84m)

Макс. осадка: 5' 1" (1.55m)

Крейс. скорость: 23 Kts. (26 MPH)

Макс. скорость: 27 Kts. (31 MPH)

Купить **Соно — HATTERAS** а также выбрать подходящую вам яхту из нашего каталога яхт вам поможет опытный яхтенный брокер Андрей Шестаков. На сегодняшний день компания **Shestakov Yacht Sales Inc.** имеет большое количество яхт в собственном списке продаж, а также тесно сотрудничает со всеми крупными яхтенными производителями по всему миру.

Для того чтобы купить яхту **Соно — HATTERAS** а также проконсультироваться по любому вопросу связанному с покупкой, продажей, чартером яхт позвоните по телефону **+7(918)465-66-44**.

ОГЛАВЛЕНИЕ

ОГЛАВЛЕНИЕ	2
ХАРАКТЕРИСТИКИ	4
Обзор	4
Основная информация	4
Размеры	4
Скорость, вместимость и масса	4
Размещение	4
Корпус и палуба	5
Информация о двигателе	5
ПОДРОБНОЕ ОПИСАНИЕ	6
Recent Major Upgrades 2016-2017	6
Layout	7
Salon	7
Galley	7
Master	7
VIP	8
Guest	8
Midship	8
Captain/Crew	9
Electronics/Audio Visual Equipment	9
Electrical Equipment	9
Aft Deck	9
Flybridge	10
Deck/Hull	10
Engine Room/Mechanical	10
Brokers Remarks	11
Disclaimer	11
Исключения	12

Отказ от ответственности	12
ФОТОГРАФИИ	13
КОНТАКТЫ	23
Контактная информация	23
Телефоны	23
Время работы	23
Адрес	23

ХАРАКТЕРИСТИКИ

Обзор

Coho is by far the most well equipped and upgraded 75 on the market today! Her very knowledgeable owner has not missed anything when it comes to making sure his yacht stands out and above all the rest! Every update possible has been done by the current owner in the amounts of \$250,000 and she is ready to go for a long time. This is the boat to buy if you are looking in the 70-80 ft. range!

Coho is quite possibly the most customized 75 Hatteras ever built. She has spent over half her life in the Great lakes where she saw service 5 months a year and the rest in heated storage. In 2010, over \$150,000 was invested to update the boat. This included a hot tub and custom grill on the bridge, new soft goods inside and out, 10 new flat screens added throughout and the entire entertainment system upgraded. Coho has been captain maintained since day 1, the paint is flawless and she truly shows in as-new condition. Trades Considered!

Основная информация

Тип судна: Моторная яхта

Модельный год: 2000

Год постройки: 2000

Страна: United States

Размеры

Длина общая: 75' 0" (22.86m)

Ширина: 19' 2" (5.84m)

Макс. осадка: 5' 1" (1.55m)

Скорость, вместимость и масса

Крейс. скорость: 23 Kts. (26 MPH)

Макс. скорость: 27 Kts. (31 MPH)

Размещение

Всего кают: 5

Всего ком. состава: 5

Корпус и палуба

Материал корпуса: Fiberglass

Информация о двигателе

Двигатели: 2

Производитель: Caterpillar

Модель: 3412

Тип двигателя: Inboard

Тип топлива: Diesel

ПОДРОБНОЕ ОПИСАНИЕ

Recent Major Upgrades 2016-2017

- Custom 2 stage hydraulic swim platform
- New bimini top over fly bridge
- Plexiglass windshield at bridge
- Stainless steel rails around Aft Flybridge
- New Garmin electronics (chart, sounder, radar, wind, etc Sirius weather and Sirius XM) with 2 displays in pilot house and 2 on flybridge
- New refrigerators on aft deck and flybridge
- Helm chairs
- Air compressed sliding bridge door
- All Engines/Generators serviced
- Audiovisual equipment
- Niad stabilizers fully rebuilt including blocks, actuators, and controller
- (5) Underwater lights - blue/white
- LED lights added down each side of vessel
- New 2 stage TNT boat lift installed on aft platform for dinghy (\$60,000) in May 2017
- New carpet throughout in April 2017
- Galley fully remodeled with new granite, sink and wall removed to create new open floor plan
- New Simrad auto pilot
- New VHF radios in both pilot house and flybridge
- New isinglass of flybridge
- New boot strip in beige to match bimini
- New ice maker on aft deck
- Freezer added on flybridge
- New headhunter water pump added 9/17
- New oversized macerator pump added 10/17
- Oil changed 10/17 in mains and generator (with clean oil samples)
- New Sonos 8 zone music system with ipad mini
- New Yamaha receiver for salon
- Designed and added new stainless engine room racks for additional storage above engines
- New Rocna Vulcan 112lb anchor
- Added actuator to flybridge door for easy access
- Replaced old cracked windshield on flybridge with new
- Davit rebuilt
- Props and shafts pulled and tuned with new prop speed in May 2017
- Water maker serviced April 2017
- New AC water pump replaced in May 2017
- Salon door rebuilt with new rollers and actuators

- All new appliances in galley
- New Fusion radio on flybridge

Layout

Coho boasts a five stateroom layout with the desirable cherry wood interior. The Main Salon has dining forward with seating for up to 8 persons. A pass through opening from the dining area into the galley gives an impression of a larger space. The galley is reminiscent of those found on much larger yachts and features a dinette to starboard and an array of new, full sized appliances to port. Forward is the pilothouse with updated electronics, leather helm bench, wing doors. Port and starboard. Stairs lead up to an automated air sliding door to the Flybridge. The oversized flybridge features ample bench seating, brand new cushions and canvas, wet bar, and davit .

Salon

The full-width salon is entered through a motion sensor automatic sliding door aft. The interior joinery is cherry wood throughout. The entertainment system is housed on the starboard side of the salon along with bottle/glass storage. All windows have Roman style shades, tinted and extend the length of the salon. Salon aft door is electric w/Door-O-Matic componets. New carpeting throughout. In the aft port corner is a pop-up TV in a cherry wood cabinet. The dining area accommodates up to 8 Guests.

Galley

The galley is located forward of the salon. There is a beautiful dinette with granite table to starboard. Full galley appliances (**new 8/2016**). **Galley remodel with walls removed for "open" floor plan.**

- Sub Zero refrigerator/freezer w/icemaker (new appliances 8/2016)
- Extra custom cabinets for additional storage
- Cooktop stove
- Microwave/convection oven
- Doube sink w/ single lever faucet
- Storage in drawers, lockers & cabinets
- **New granite countertops (8/2016)**

Master

- Queen size bed with custom mattress
- Generous storage drawers
- Walk-in cedar lined closet

- Entertainment system
- Large private head
- Dual sinks
- Vanity
- Jacuzzi tub & shower
- Master stateroom mattress upgraded
- New carpet

VIP

- Queen berth that can be split to create twin berths
- Located forward midship
- TV
- A/C controls
- Port lights
- Ensuite private head
- Jacuzzi tub, shower & vanity
- New carpet

Guest

- Oversized Over/under bunks to starboard
- Storage drawers
- Hanging locker
- Port lights
- TV
- A/C controls
- Overhead hatch
- Private head to port with shower & vanity
- New carpet

Midship

- Features twin berths
- Storage drawers
- Hanging locker
- A/C controls
- Shared starboard guest head
- New carpet

Captain/Crew

- Over/under berths
- Single bunk with pullman above
- Head, Shower
- Storage
- New carpet

Electronics/Audio Visual Equipment

- All new Garmin Radar, Platter, Depth
- (2) new Garmin touch screen units at each station 2017- total 4 units
- **New Simrad Autopilot, pilothouse and flybridge (7/2016)**
- **ICOM 604 VHF, 2 station (8/2017)**
- Sea Hailer
- Garmin chart, radar, depth (new 7/2017)
- **New wind anemeter added (5/17)**
- KVH system and 5 Direct TV receivers
- Cat Vision electronic engine monitors
- Hatteras safety monitor system
- Vinimar monitoring system for all tank levels
- Ritchie compasses
- ACR spotlight control
- CCTV system for engine room and stern
- Premium sound system on all decks upgraded to Sonos/Fusion
- **New Sonos music system added 8 zones (7/2016)**
- **New Yamaha media amplifier (7/2016)**
- All new audio visual controls through Apple Ipad 2017

Electrical Equipment

- Twin Onan 21.5 kw generators (gen #1 has 3500 hrs, gen #2 has 4500 hrs as of 10-6-17)
- 24v/12v battery system with full breakered panels
- Glendinning 240v shore power cablemasters
- 100' of cable on starboard and 110' cable port
- Crestron lighting controls in salon & master
- Extra lighting added to generator room
- Shore power cables lengthened on cablemaster to 100 & 110'
- **(5) new blue/white LED underwater lights (8/2016)**

Aft Deck

- Teak aft deck area with stainless steel rails
- L-shaped lounge, aft deck port side with Corian table and storage
- Built-in custom cabinet with corian top
- **Icemaker, refrigerator new 2017**
- Electric entry door slides to port side for main salon entry
- Custom entry gates, port & starboard on sides for tide ride entry

Flybridge

- U-shaped built-in seating, port
- Custom hot tub installed 2010
- **Bimini top connected to arch with quick disconnect pins - new 2017**
- **New Eisenglass (8/2016)**
- **Replaced flybridge windshield with new plexiglass (11/2016)**
- **New deck - non-skid on flybridge**
- **Bar to port with sink, icemaker, refrigerator & storage - new appliances 2017**
- Hydraulic arch
- **(4) Raised helm seats - new 2017**
- Nautical Structures 1500 lb hydraulic davit - **fully rebuilt (11/2016)**
- **New stainless steel rails added around flybridge aft deck (5/2017)**
- ACR searchlight control

Deck/Hull

- Grip-Tex non skid surfaces
- Exterior covers & cushions
- Deck has bow seat w/cover
- Maxwell 3500lb windlass, chain & anchor
- **New anchor (6/2016)**
- Stainless steel stanchions w/large bow pulpit
- Marquipt hydraulic fold down arch option to easily lower arch
- Main deck abd flybridge have (4) custom wing controls for easier docking
- Nautical Structures davit w/fold-out boom extension & hydraulic rotation
- Aft deck boarding gates were added
- **TNT boatlift installed on stern (5/17) 2 Stage**
- **LED lights installed in eves/walk around (6/16)**
- **LED courtesy lights installed exterior sport deck and stairs**
- **Boot stripe in beige to match Bimini (2016)**
- **Props and shafts tuned, new prop speed (5/2017)**

Engine Room/Mechanical

- Watermaker remote control in pilothouse
- **Watermaker serviced (4/2017)**
- **3,000 Hour Cat Service to be complete by the end of March 2018**
- Fuel coolers added to both main engines New May 2017
- Twin Caterpillar 3412 Direct Drive 1400hp Engines
- **Naiad Multi Sea stabilizer system upgraded to w/7.5' fins (both stabilizer fins were completely rebuilt in 2016. All surrounding was pulled and replaced), new actuators, controls (5/2017)**
- 24v DC fresh water pump added for backup
- Raw water washdown pressure system
- Fuel priming pumps w/timer controls for start-up & priming
- Transmissions w/trolling valves for slow idle
- New Head hunter fresh water pump 7/2017
- Fuel coolers were added to both main engines
- 24v DC freshwater pump added for backup
- Vintimar monitoring system for all tank levels, fuel freshwater & black water
- All staterooms have photoelectric smoke detectors
- CO detectors added in master & VIP
- Main engine exhaust risers have new modified spray rings for efficient cooling of wet exhausts
- Emergency bilge suctions were added raw water pick ups for port & stbd bilges
- A/C seawater seacocks & strainers relocated to engine room for easier access
- New A/C water pump (9/2017)
- Delta T moisture eliminators for better ventilation
- Engine room entry doors double insulated & gasketed for noise reduction
- Ultraviolet 20 gpm sterilizer added to freshwater system
- **New black water pump added (10/2017)**
- **New headhunter freshwater pump (9/2017)**
- **All oil changed in mains and generators (10/2017)**
- **New engine room racks designed and added for additional storage above engines (2017)**

Brokers Remarks

The owner of Coho is a avid yachtsman that has meticulously maintained this vessel. This is a "turn key" vessel and boasts all amenities one could hope for , in a vessel of this size. She shows like a "10".

Disclaimer

The Company offers the details of this vessel in good faith but cannot guarantee or warrant the accuracy of this information nor warrant the condition of the vessel. A buyer should instruct his agents, or his surveyors, to investigate such details as the buyer desires validated. This vessel is

offered subject to prior sale, price change, or withdrawal without notice.

Исключения

При продаже яхты исключаются личные вещи владельца.

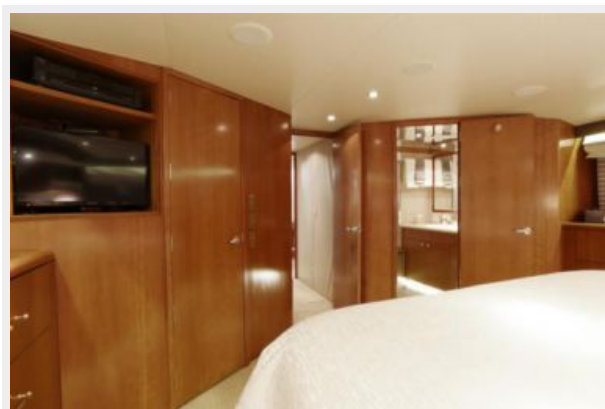
Отказ от ответственности

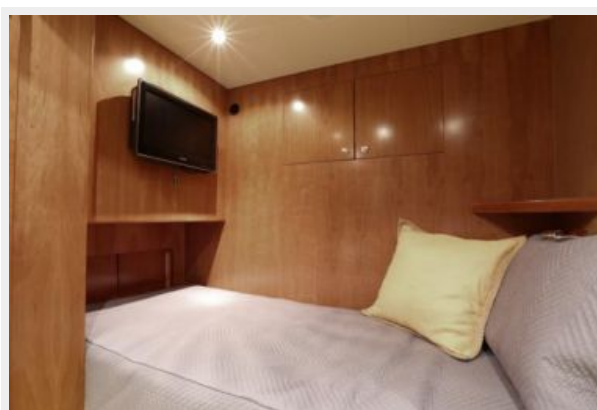
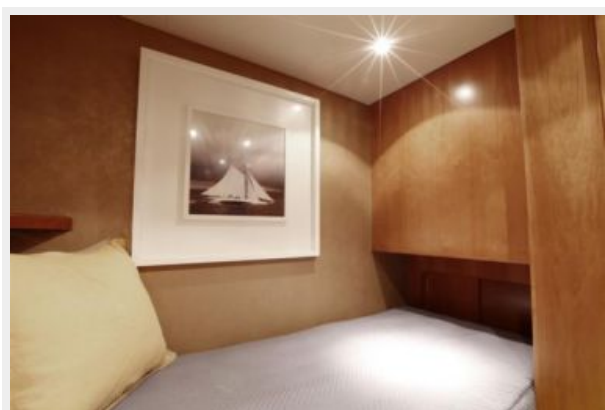
Компания предоставляет описание судна или яхты добросовестно, но не может гарантировать точность этой информации, а также не ручается за техническое состояние. Покупатель должен проинструктировать своих агентов или оценщиков исследовать представленную информацию более подробно, по собственному желанию. Продажа судна или яхты, изменение цены или снятие с продажи будет происходить без предварительного уведомления.

ФОТОГРАФИИ

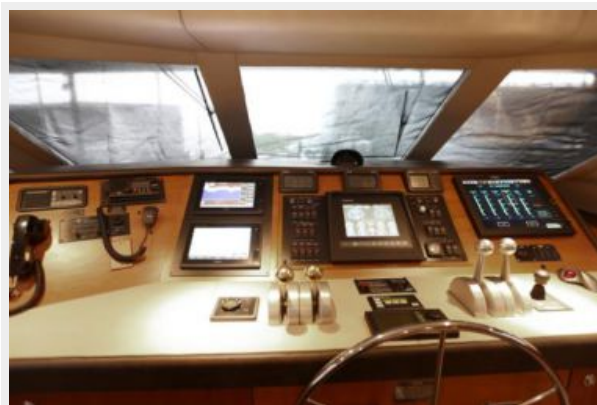






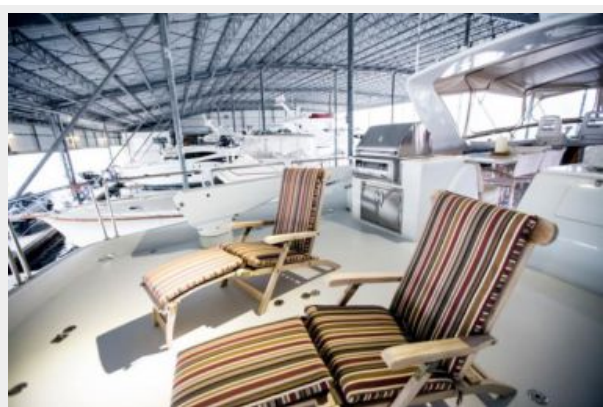














КОНТАКТЫ

Андрей Шестаков (Andrey Shestakov) – ведущий яхтенный брокер отдела продаж яхт и судов компании Shestakov Yacht Sales Inc. Официальный представитель Shestakov Yacht Sales Inc. для русскоговорящих клиентов в центральном офисе компании в Майами/Форт Лодердейл/Флорида/США.

Контактная информация

Email: andrey@shestakovyachtsales.com

Web: shestakovyachtsales.com

Телефоны

Краснодарский край: **+7(918)465-66-44**

США, Майами, Флорида: **+1(954)274-4435**

Время работы

Понедельник – Суббота: **9:00 - 21:00**
EDT

Воскресенье: **Закрыто**

Адрес



Harbour Towne Marina, 850 NE 3rd St,
STE 213, Dania, FL 33004