

INSANE-O — VIKING



Судостроитель: VIKING

Год постройки: 2013

Модель: Катер для спортивной рыбалки

Цена: **ЦЕНА ЯХТЫ ПО ЗАПРОСУ**

Местонахождение: United States

Длина общая: 66' 0" (20.12m)

Ширина: 19' 1" (5.82m)

Макс. осадка: 5' 5" (1.65m)

Крейс. скорость: 34 Kts. (39 MPH)

Макс. скорость: 42 Kts. (48 MPH)

Купить **Insane-O — VIKING** а также выбрать подходящую вам яхту из нашего каталога яхт вам поможет опытный яхтенный брокер Андрей Шестаков. На сегодняшний день компания **Shestakov Yacht Sales Inc.** имеет большое количество яхт в собственном списке продаж, а также тесно сотрудничает со всеми крупными яхтенными производителями по всему миру.

Для того чтобы купить яхту **Insane-O — VIKING** а также проконсультироваться по любому вопросу связанному с покупкой, продажей, чартером яхт позвоните по телефону **+7(918)465-66-44**.

ОГЛАВЛЕНИЕ

ОГЛАВЛЕНИЕ	2
ХАРАКТЕРИСТИКИ	4
Обзор	4
Основная информация	4
Размеры	4
Скорость, вместимость и масса	4
Размещение	4
Корпус и палуба	5
Информация о двигателе	5
ПОДРОБНОЕ ОПИСАНИЕ	6
Overview	6
Accommodations	6
Salon	6
Galley/Dinette	7
Companionway	7
Master Stateroom	8
Master Head	8
Forward Guest Stateroom	8
Forward Stateroom Head	9
Crew Stateroom	9
Crew Stateroom Head	9
Starboard Guest Stateroom	10
Starboard Stateroom Head	10
Flybridge and Helm	10
Deck and Exterior	11
Engine Room, Mechanical, Electrical and Plumbing	12
Electronics	12
Исключения	13

Отказ от ответственности	13
ФОТОГРАФИИ	14
КОНТАКТЫ	26
Контактная информация	26
Телефоны	26
Время работы	26
Адрес	26

ХАРАКТЕРИСТИКИ

Обзор

The Viking 66 Convertible combines the builder's traditionally aggressive profile with every high-end feature a tournament angler could possibly desire. **Low hours, day head, tower, and, cockpit mezzanine! Recently completed 3 Step Hull Wax, Fresh Bottom Paint, and New Trim Tab Motors. Motivated Seller!** Call to schedule your appointment to see her today! **Trades Considered!**

Основная информация

Тип судна: Катер для спортивной рыбалки

Подкатегория: Convertible

Модельный год: 2013

Год постройки: 2013

Страна: United States

Размеры

Длина общая: 66' 0" (20.12m)

Длина по ватерлинии: 61' 5" (18.72m)

Ширина: 19' 1" (5.82m)

Макс. осадка: 5' 5" (1.65m)

Скорость, вместимость и масса

Крейс. скорость: 34 Kts. (39 MPH)

Макс. скорость: 42 Kts. (48 MPH)

Водоизмещение: 102875 Pounds

Вместимость воды: 340 Gallons

Вместимость сточного бака: 210 Gallons **Объем топливного бака:** 2086 Gallons

Размещение

Всего кают: 4

Всего ком. состава: 4

Корпус и палуба

Материал корпуса: Fiberglass

Информация о двигателе

Двигатели: 2

Производитель: MTU

Модель: 16V-2000

Тип двигателя: Inboard

Тип топлива: Diesel

ПОДРОБНОЕ ОПИСАНИЕ

Overview

The Viking 66 offers many of the latest accouterments. The salon features a day head aft for convenience when fishing. The island galley allows traffic to flow when entertaining. The 4 stateroom layout offers a crew quarters with head and engine room access in addition to 3 guest staterooms, each with private access to their own head. The bridge sports an island helm console with abundant electronics storage and 3 helm chairs so owners and guest can enjoy the experience with the Captain. The sleek lines give her that Custom boat appearance while the fiberglass construction and Viking engineering provide the speed, safety and ride that are synonymous with the Viking name.

The boat is an outstanding example of a Viking 66 Convertible. The Captain has kept this boat in "Palm Beach" condition and all systems are go! She is outfitted with all the right gear and ready for a new owner to move his gear on board and start cruising or fishing right away!

Accommodations

Entering the salon, the Viking 66 boasts the island galley layout which has become the industry standard. The spacious salon features room for entertaining with a large L-shaped settee, and comfortable ottoman with storage. Additional guests will find the bar stools at the galley island comfortable and the dinette offers more comfortable seating. The day head is conveniently located near the salon door for ease of access from the cockpit when fishing or while entertaining. Moving forward in the boat, the galley shares the island with the salon and expands the spaciousness of this area. The under counter drawer refrigeration, electric cook top, microwave and plentiful storage in cabinets, bar storage, and drawers, all ensure that everything you need to keep your guests satiated will be at your fingertips. A pantry and equipment room offer additional storage for long ranging.

The mid-ship master features an athwartship walk around king bed and ensuite head befitting the owner. The credenza, maple lined hanging lockers and drawer storage ensure that there is room for clothes for any occasion. The forward stateroom features another walk around bed, this one a queen, and also has an ensuite head for maximum privacy. The crew stateroom starboard aft has upper lower bunks and have a unique head arrangement down 2 steps that includes all the accommodations plus an engine room access door for doing those engine room checks without disturbing owners or guests. The starboard stateroom forward is another upper lower bunkroom and also offers private access to the starboard head.

Salon

- Upgraded JR Beers electric salon door for smooth reliable operation

- Octoplex Power Distribution system panel controls AC and DC breakers remotely throughout the boat
- Upgraded Bose Lifestyle (LS-48) entertainment system
- Flat screen TV in pop up cabinet
- Salon full carpet runner
- Optional day head with Blue pearl granite counter top
- Overhead low voltage lighting with dimmers
- Custom Amtico flooring with teak trim at salon entrance way
- Teak Valances and lambrequins
- Custom Amtico flooring in day head
- Teak Crown molding in salon, galley, and dinette
- Fabrica Carmel 5112 Mission Trail carpet throughout
- Cocktail ottoman with storage
- Bar stools with no backs allow those seated to be part of conversation in salon or galley
- Cruisair air-conditioning with reverse cycle heat and SMX II controls
- Hunter Douglas Silhouette blinds
- Teak strips in headliner
- Large L-shaped couch with storage under cushions

Galley/Dinette

- Custom galley island with 360 degree access
- Granite counter top - Blue Pearl with ogee edge
- Mirrored backsplash
- Custom Amtico flooring
- Stainless steel sink with disposal
- Subzero under counter drawer refrigerator units (2) with 4 drawers
- Subzero under counter freezer unit with 2 drawers
- Electric 4 burner cooktop
- Microwave convection oven
- Trash compactor Water tank gauge
- Abundant storage in upper galley cabinetry, lower cabinets, and drawers
- Teak dinette table
- Dinette couch with storage under

Companionway

- Pantry/electronics room off of companionway
- Central vacuum system
- Canvas carpet runner
- Access hatches to blue area with magnetic switches for lighting
- Teak strips in companionway

Master Stateroom

- Midship master stateroom with athwartship king bed
- Credenza with drawer storage
- Upholstered headboard
- Teak end tables
- Overhead DC lighting with dimmers
- Individually switched reading lights
- Lamps on night tables
- Decorative rope lighting under bed platform
- Cruisair air-conditioning with reverse cycle heat and SMX II controls
- Mattress system 3 upgrade
- 32' flat panel TV
- Bose stereo/DVD player with surround sound
- Large hanging lockers with Diamond pattern teak doors
- Bed lifts on gas shocks for access to storage under

Master Head

- Master head is private to master stateroom
- Custom Amtico flooring Granite countertop - Blue Pearl with ogee edge
- Teak faced vanity with storage under
- Overhead low voltage lighting
- Exhaust fan
- Air conditioning vent
- Mirrored ceiling
- Mirror around upper vanity insert
- Fiberglass shower stall
- Single piece glass shower door
- Teak frame around shower door
- Grohe faucet and fixtures

Forward Guest Stateroom

- Pedestal queen bed
- Bed lifts on gas shocks for easy access to storage under
- Overhead low voltage lighting with dimmers
- Individually switched reading lights
- Decorative rope lighting under bed platform
- Cruisair air-conditioning with reverse cycle heat and SMX II controls
- Flat panel TV
- DVD player

- Stereo speakers with remote control
- System 1 mattress upgrade
- Maple lined hanging locker

Forward Stateroom Head

- Head is private to stateroom
- Mirrored ceiling
- Mirror around upper vanity
- Teak face vanity with storage
- Granite counter top - Blue Pearl with ogee edge
- Custom Amtico flooring
- Fiberglass shower stall
- Single piece glass shower door
- Teak frame around shower door opening
- Exhaust fan
- Air conditioning vent
- Overhead low voltage lighting
- Grohe faucets and fixtures

Crew Stateroom

- Upper/lower bunks
- System 1 mattress upgrades
- Maple lined teak hanging locker
- Drawer storage under locker
- Credenza with drawer storage
- Overhead low voltage lighting with dimmer
- Cruisair air conditioning with reverse cycle heat and SMX II controls
- Flat screen TV
- Stereo speakers with volume control
- Private access to crew head

Crew Stateroom Head

- Private to crew stateroom
- Teak faced lower vanity with storage
- Mirrored upper vanity
- Granite counter top - Blue Pearl with bullnose edge
- Custom Amtico flooring
- Fiberglass shower stall

- Teak frame around shower door opening
- Grohe faucets and fixtures
- Air conditioning vent
- Exhaust fan

Starboard Guest Stateroom

- Upper/lower bunks
- System 1 mattress upgrades
- Maple lined hanging locker
- Storage drawers below hanging locker
- Cruisair air conditioning with reverse cycle heat and SMX II controls
- Overhead low voltage lighting
- Teak night table
- Stereo speakers with volume control

Starboard Stateroom Head

- Private to stateroom
- Teak faced vanity storage
- Granite counter top - Blue Pearl with bullnose edge
- Custom Amtico flooring
- Fiberglass stall shower
- Teak trim around shower opening
- Grohe faucets and fixtures
- Air conditioning vent
- Exhaust fan

Flybridge and Helm

- Palm Beach Tower Package
- Overhead electronics drop down box
- Overhead recessed teaser reels - Miya Epoch US9
- 3 Release Trillion helm chairs
- Island helm console with recessed electronics boxes
- Release teak helm pod with single lever controls with thruster buttons handles
- Helm air conditioning
- Flybridge freezer box
- Refrigerated drink box
- Flybridge seating port and starboard with storage under
- Removable jumpseat backrests port and starboard

- Fusion Stereo MS-UD750
- Push button catches on electronics boxes
- Install bridge without exposed fasteners
- Drip dry foam on flybridge cushions
- Fresh water outlet on bridge
- MTU DDEC engine gauges
- Electronic trolling valves
- Ritchie compass
- Horns mounted under flybridge front

Deck and Exterior

- Custom painted hull color - Buc Blue Alex Seal Paint
- Custom metallic boot stripe
- Black mask forward
- Delete bow pulpit rail
- Bow thruster with buttons in control handles
- Oval Exhaust outlets
- Fiberglass side thru hulls
- Fiberglass tank vents
- Deck fill for fresh water tank
- Mezzanine Cockpit
- Outdoor ultra leather Mezzanine cushions
- Mezzanine air conditioning
- 2 - 24V outlets under cockpit coaming
- Awlgrip lazarette
- Y-valve for fresh and salt water washdowns
- In deck fishboxes
- Livewell in cockpit box
- Solid transom coaming with transom fishbox (also plumbed as livewell)
- Teak covering boards
- Teak cockpit, mezzanine deck and steps on flybridge ladder
- Bait trays for refrigerated cockpit box
- Refrigerated drinkbox in cockpit step
- Cockpit freezer under mezzanine seat
- Storage lockers under port and starboard cockpit coaming
- Release marine rod holders in gunnels
- Cockpit cover
- Cockpit "fly" style shade
- Fresh water wash down in bow anchor locker
- Painted rub rail
- Recessed trim tab covers

Engine Room, Mechanical, Electrical and Plumbing

- Preferred MTU 16V 2000 M91 2028 MHP engines
- 1 - 27KW (1086 Hrs)/ 1 - 21.5 KW (1087 Hrs.) Onan generators
- Racor fuel filters for main engines and generators painted snow white
- Gas/water separators for both generators
- Prep and prewire for watermaker
- Awlgrip thru hulls in engine room and forward bilges
- Oil change line run to cockpit box with switch
- Dual power steering pumps
- 110V outlet in engine room
- Clear acrylic shaft log covers
- 2 - 4 drawer tool boxes in engine room painted white
- Willy Vac system
- Headhunter head system throughout boat
- Tee in dockside water manifold to fill water tank from dockside water
- Overboard discharge for all heads
- Awlgrip forward bilges and anchor locker
- 240V AC system with 2 50A shore power cords
- ISO boost voltage stabilizer transformers for AC power
- 24V DC system with maintenance free batteries and battery chargers
- Battery distribution panels with shut off switches
- Battery parallel system
- Cruisair air conditioning system with compressors in engine room
- Automatic and manually activated bilge pumps throughout boat with "dry out" pumps
- Centralized seawater system
- Delta T engine room vents
- Fire suppression system
- 110V AC fresh water system with tank, filter, deck fill, and dockside water
- Water heater
- Manifolds for water systems components in engine room and forward bilge
- Eskimo ice machine
- Additional fuel tank for maximum fuel capacity
- Fuel transfer and management system through Octoplex System
- External sea strainers for main engines
- Internal strainers for generators and other sea water inlets
- Oil change system
- Viper electronics steering system

Electronics

- 2 Simrad NSO black box GPS/Plotter/Radar
- 3 17" KEP screens

- Simrad XM weather (Ready not activated)
- 10KW Simrad radar
- Autopilot interface
- Rate compass
- Garmin 7610 chart plotter with Garmin 8530 BB chirp sounder
- Airmar 509 Hi low transducer
- KVH F150 Sat Phone
- KVH Tracvision HD 7
- Icom M-604
- 2 Simrad NSO black box GPS/Plotter/Radar
- Standard Horizon 5000 VHF
- Furuno RD 33 depth, temp, multi-function
- Garmin AIS 300
- Simrad sonic hub with XM radio (Not activated)
- 4 JL speakers on flybridge
- JL speakers on cockpit
- 4 engine room comeras with Levity video sequencer
- Simrad NSE 8 in tower
- Icom M-504 in tower

Исключения

При продаже яхты исключаются личные вещи владельца.

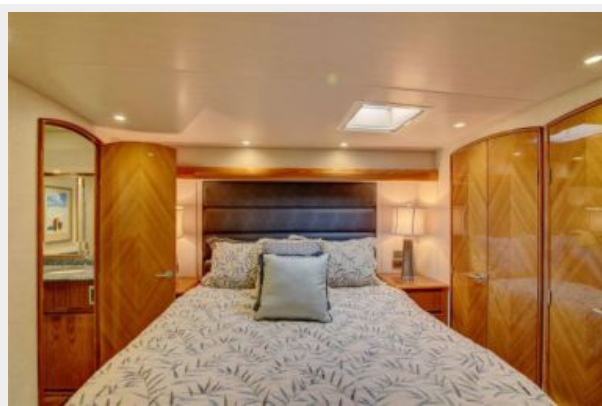
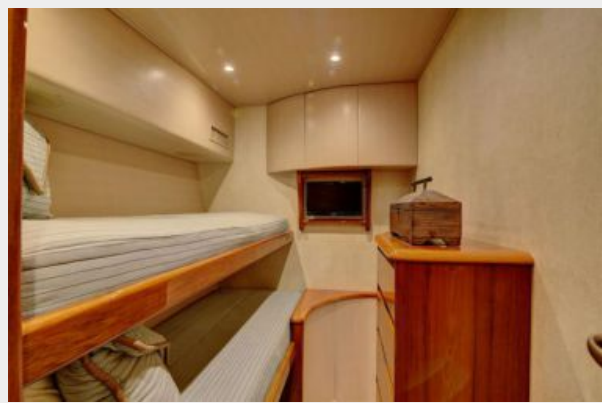
Отказ от ответственности

Компания предоставляет описание судна или яхты добросовестно, но не может гарантировать точность этой информации, а также не ручается за техническое состояние. Покупатель должен проинструктировать своих агентов или оценщиков исследовать представленную информацию более подробно, по собственному желанию. Продажа судна или яхты, изменение цены или снятие с продажи будет происходить без предварительного уведомления.

ФОТОГРАФИИ



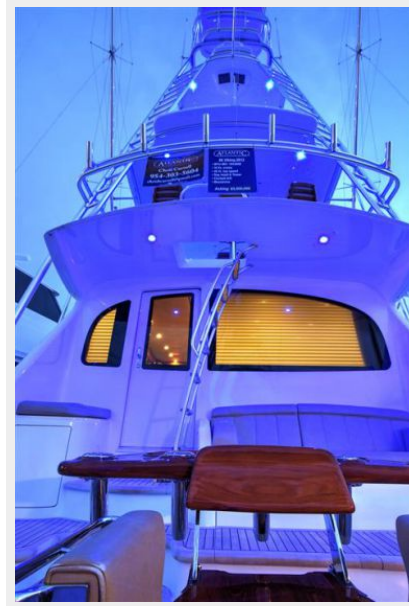


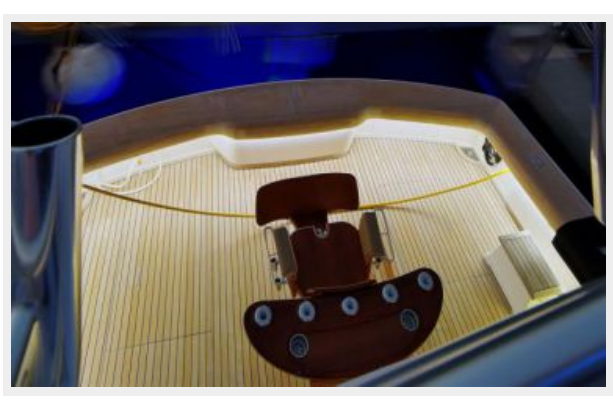
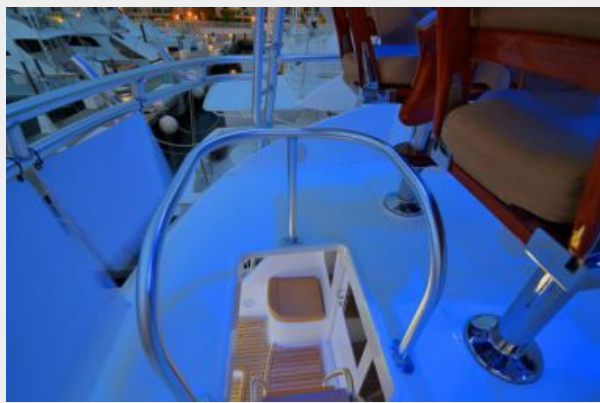


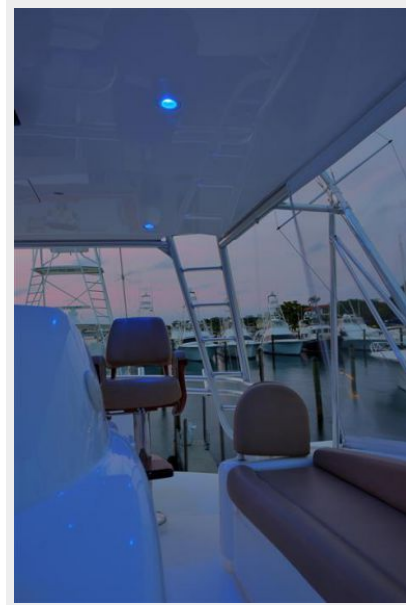


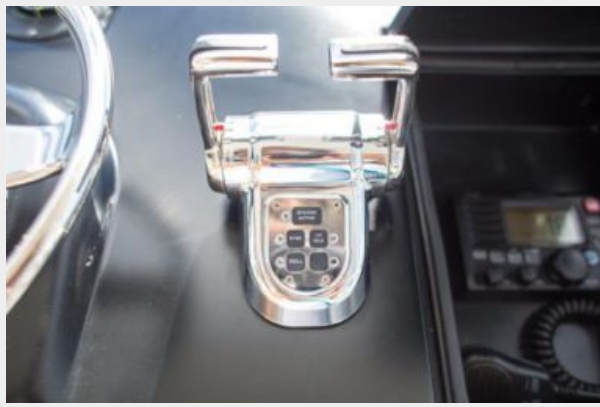
















КОНТАКТЫ

Андрей Шестаков (Andrey Shestakov) – ведущий яхтенный брокер отдела продаж яхт и судов компании Shestakov Yacht Sales Inc. Официальный представитель Shestakov Yacht Sales Inc. для русскоговорящих клиентов в центральном офисе компании в Майами/Форт Лодердейл/Флорида/США.

Контактная информация

Email: andrey@shestakovyachtsales.com

Web: shestakovyachtsales.com

Телефоны

Краснодарский край: **+7(918)465-66-44**

США, Майами, Флорида: **+1(954)274-4435**

Время работы

Понедельник – Суббота: **9:00 - 21:00**
EDT

Воскресенье: **Закрито**

Адрес



Harbour Towne Marina, 850 NE 3rd St,
STE 213, Dania, FL 33004