

NEVER ENOUGH — TRINITY



Builder: TRINITY

Year Built: 2006

Model: Motor Yacht

Price: PRICE ON APPLICATION

Location: United States

LOA: 157' 0" (47.85m)

Beam: 28' 0" (8.53m)

Min Draft: 7' 1" (2.16m)

Max Draft: 7' 4" (2.24m)

Cruise Speed: 16 Kts. (18 MPH)

Max Speed: 19 Kts. (22 MPH)

Our experienced yacht broker, Andrey Shestakov, will help you choose and buy a yacht that best suits your needs **NEVER ENOUGH — TRINITY** from our catalogue. Presently, at Shestakov Yacht Sales Inc., we have a wide variety of yachts available on our sale's list. We also work in close contact with all the big yacht manufacturers from all over the world.

If you would like to buy a yacht **NEVER ENOUGH — TRINITY** or would like help answering any questions concerning purchasing, selling or chartering a yacht, please call **+1(954)274-4435**

TABLE OF CONTENTS

TABLE OF CONTENTS	2
SPECIFICATIONS	4
Overview	4
Basic Information	4
Dimensions	5
Speed, Capacities and Weight	5
Accommodations	5
Hull and Deck Information	5
Engine Information	6
DETAILED INFORMATION	7
Overview	7
Accommodations	7
Main Salon & Dining Area	8
Galley & Laundry	8
Master Stateroom, On-Deck	9
VIP King Stateroom - Lower Deck, Port	10
(2) King Guest Staterooms - Lower Deck, Port & Stbd	10
Twin Guest Stateroom - Lower Deck, Starboard	10
Crew Quarters, Aft	11
Pilothouse Equipment	11
Electronics, Navigation & Communication	11
Audio & Visual Equipment	12
Skylounge & Upper Aft Deck	13
Flybridge Equipment	13
Tenders & Toys	14
Deck Equipment	14
Aft Deck Equipment	14
Electrical Equipment & Lazarette	15

Safety & Fire Protection	15
Engine & Mechanical Equipment	15
Exclusions	16
Disclaimer	16
PHOTOS	17
CONTACTS	27
Contact details	27
Telephones	27
Office hours	27
Address	27

SPECIFICATIONS

Overview

NEVER ENOUGH is one of the finest Trinity Tri-Deck Motor Yachts built and currently on the market. Not only is she extremely well designed, but she was built to incredibly high specifications, commissioned by an owner who has been in yachting for many years and has owned multiple yachts. Trinity Yachts and Evan Marshall were able to not only meet but exceed expectations. As important as the design and finish, this vessel has had three owners all of whom have maintained her to the highest of standards. NEVER ENOUGH is one of a kind and offers great performance and safety. This vessel is the perfect yacht for charters and for families with children. The yacht's tenders and toys along with her impressive list of amenities offers owners and guests an enjoyable time aboard. The yacht's impeccable condition and extensive service and maintenance program also provides for uninterrupted service during owners and guest use. The vessel is in turn-key condition ready for cruising with her 10 year-ABS survey completed in October 2016 and her most recent annual survey completed in October 2018. NEVER ENOUGH had a partial refit in Oct 2018 to include new hull paint, new bottom paint, all running gear serviced to include new cutlass bearings and prop balancing, new exterior cushions, new interior carpeting along with service to many other systems and equipment. The vessel is current on all safety equipment as well as meets all American Bureau of Shipping (ABS) and Flag State (Marshall Islands) requirements.

Top end overhaul on her main engines in June 2020

Basic Information

Category: Motor Yacht

Sub Category: Tri-Deck

Model Year: 2006

Year Built: 2006

Refit Year: 2018

Refit Type: New hull paint

Country: United States

Vessel Top: Hardtop

Fly Bridge: Yes

Dimensions

LOA: 157' 0" (47.85m)	LWL: 157' 0" (47.85m)
Beam: 28' 0" (8.53m)	Min Draft: 7' 1" (2.16m)
Max Draft: 7' 4" (2.24m)	MFG Length: 157' 0" (47.85m)

Speed, Capacities and Weight

Cruise Speed: 16 Kts. (18 MPH)	Max Speed: 19 Kts. (22 MPH)
Gross Tonnage: 465 Pounds	Water Capacity: 2600 Gallons
Fuel Capacity: 15685 Gallons	

Accommodations

Total Cabins: 5	Sleeps: 10
Total Heads: 9	Crew Cabin: 5
Crew Berths: 8	

Hull and Deck Information

Hull Material: Aluminum	Hull Configuration: Semi-Displacement
Hull Color: Blue	Hull Designer: Trinity Yachts
Exterior Designer: Trinity Yachts	Interior Designer: Evan Marshall

Engine Information

Engines: 2

Manufacturer: Caterpillar

Model: 3512B

Engine Type: Inboard

Fuel Type: Diesel

DETAILED INFORMATION

Overview

NEVER ENOUGH is one of the finest Trinity Motor Yachts ever built. She offers a five stateroom layout with a full beam master stateroom on deck and four guest staterooms on the lower deck. She features rich mahogany interior joinery and high quality marble and granite throughout. The newly upholstered furnishings and soft goods are tastefully appointed with premium fabrics and silks. The vessel has been maintained to the highest of standards and is in ready-to-go condition. She has many comfortable areas for entertaining both indoor and outdoor. The flybridge features a 6-person Jacuzzi tub, gas BBQ grill, lounge and dining areas and a full bathroom. The upper deck skylounge and upper aft deck areas feature a large circular teak table for dining outdoors and a full service walk behind bar indoors. Also, there is an entertainment center with HDTV and surround sound stereo. The main deck features a comfortable main salon area ideal for relaxing and entertaining guests. Forward in the main salon is a formal dining area with a custom dining table and seating for ten. Mechanically, the vessel is in A-1 condition having her 10-year ABS survey completed in 2016 and her most recent annual survey completed in October 2018. The vessel had a partial refit in October 2018 to include new hull paint, new bottom paint, all running gear serviced to include new cutlass bearings and prop balancing, new exterior cushions, new interior carpeting along with service to many other systems and equipment. The vessel is current on all safety equipment as well as meets all American Bureau of Shipping (ABS) and Flag State (Marshall Islands) requirements.

Accommodations

Accommodations for (10) guests in (5) spacious staterooms in dark cherry, all with ensuite baths with inlaid marble. Four guest staterooms are located on the lower deck, three with king sized beds and one with twin beds.

The full beam master stateroom is located forward on the main deck and is accessed through the owner's private office on the starboard side. The master stateroom has large windows, a dressing table on the port side and sofa starboard. His and hers separate walk-in closets are forward and his and hers separate baths both have inlaid marble floors. Her bath is complete with an oval marble bath and overhead fiber optic star ceiling to enhance relaxation while his has a large marble shower.

Aft of the main foyer is the open plan main salon / dining area. Large windows allow natural sun light to the spacious salon where entertaining family and friends can be either formal or casual. Forward is the dining salon providing a more formal dining setting while al-fresco dining is offered on either the air-conditioned aft main deck or upper aft deck. The galley is amidship port side on the main deck.

Above the main salon on the bridge deck is the full-beam skylounge with large windows and aft

double automatic sliding glass doors providing excellent views. The sundeck above houses the tender and a jacuzzi forward with built-in sun pads and large open areas for lounge chairs. Unobtrusive glass screens provide shelter from the breeze while allowing guests to enjoy the spectacular view.

Crew quarters are located below deck forward of the guest staterooms and include three crew cabins each with their own bathroom and shower, a large crew lounge. The double berth engineer's cabin is aft of the engine room and includes a bathroom with shower. The Captain's cabin is aft of the pilothouse and includes a queen size berth, bathroom with shower.

The interior has an International style with classic raised and fielded wooden joinery complemented with European custom furnishings and accessories.

Main Salon & Dining Area

- Custom mahogany joinery throughout
- Automatic stainless steel/glass sliding doors to aft deck
- (2) Custom upholstered sofas w/arms, port & stbd (2/19)
- Custom upholstered loveseat (2/19)
- (2) upholstered armchairs (2/19)
- Custom glass cocktail table
- Custom mahogany half-moon table behind loveseat
- Entertainment center w/ Samsung 55" LCD TV, Denon stereo, Kaliedscape DVD/VCR & surround sound system & iPad controller
- Wet bar to port w/gold plated sink, custom fixtures, Sub-Zero refrigerator & icemaker
- Built-in cabinet w/crystal & stemware storage, stbd
- Built-in cabinetry, port & stbd w/marble top
- Custom overhead oval soffit w/mahogany & gold leaf inlay design
- Custom automatic window treatments w/blinds & new valences ('19) **Dining Area:**
- Formal dining area forward in main salon
- Custom finished dining table w/ (10) dining chairs
- Custom oval soffit w/mahogany, hand-painted inlay & light fixture
- Custom cabinetry w/marble surfaces, port & stbd
- Day head forward w/marble vanity, sink w/custom fixtures, mirror & marble flooring

Galley & Laundry

- Miele 5-burner induction stove, oven & steamer
- Vulcan ESB36-2 Salamander & hood w/fire suppression system
- Kitchen Aid convection oven
- LG microwave
- Delfied double refrigerator & freezer
- Sub-Zero 249RP refrigerator

- Scotsman icemaker
 - Miele Professional G7859 dishwasher
 - Kitchen Aid trash compactor
 - Sub-Zero undercounter drink refrigerator
 - Custom granite surfaces throughout
 - Granite bar top w/ 3 upholstered bar stools
 - (2) Double stainless steel sinks
 - Sharp 12" TV
 - Alpine stereo w/2 overhead speakers
 - Chef's pantry
 - Stew pantry
 - Amtico wood flooring Laundry Equipment:
 - (2) Miele TouchTronic W3033 water control system washers in crew ('13)
 - (2) Miele TouchTronic T8003 dryers in crew ('13)
 - Maytag Neptune washer/dryer in guest foyer
- Maytag Neptune washer/dryer in lazarette
- Miele Roller Press in crew

Master Stateroom, On-Deck

- Double door entry into master
- Centerline king berth w/upholstered headboard, custom spread & shams
- Built-in nightstands w/marble top, 3-drawers, port & stbd
- Custom built-in vanity/desk w/ 3-drawers fwd & aft, to port
- Upholstered settee w/built-in cabinets w/(6) drawers on each side to port
- Decorative table lamps
- Custom overhead soffitt w/Mahogany inlay & lighting
- Entertainment center w/Samsung 55" LCD TV, Direct TV receiver, Samsung DVD, iPad/Crestron remote controls, Denon amplifier & surround sound
- His & her walk-in closets, port & stbd
- (3) Oval windows, port & stbd
- Custom window treatments w/automatic blinds & tie-backs

Located inside Master Stateroom, Starboard Companionway:

- (2) Full Size Eurocave Wine Coolers
- Custom office desk with chair
- Built-in (6) drawer dresser His & Her Master Bath (separate):

His Bath: (Entry from starboard aft side)

- Marble, glass enclosed shower w/custom gold fixtures & dome lighting
- Marble vanity w/custom sink & gold fixtures
- Decorative light sconces
- Marble flooring

Her Bath: (Entry from port aft side)

- Roman marble Jacuzzi tub/shower w/glass enclosure & custom fixtures
- Head and Bidet
- Decorative light sconces
- Marble flooring
- Custom fixtures
- Custom window treatments
- LCD 12" TV

VIP King Stateroom - Lower Deck, Port

- King berth w/custom upholstered headboard, storage below, custom spread & shams
- (2) Built-in nightstands w/ 3 drawers, marble tops & table lamps
- Built-in dressers & vanity w/mirror & bench
- Custom overhead soffit w/ lighting and swag drapery
- Entertainment center aft w/Samsung 26" TV, Denon surround sound, Blue Ray, Kaleidescape,
- Hanging closets
- Custom wallcoverings
- Private bath w/marble vanity, custom sink & fixtures, glass enclosed marble shower & marble flooring

(2) King Guest Staterooms - Lower Deck, Port & Stbd

The two King Guest Staterooms are mirror images and include the same features;

- California King bed w/ drawer storage below, custom spread, shams and decorative pillows
- (2) Built-in nightstands w/3-drawers
- Built-in vanity w/stool, Entertainment Center and storage cabinets/drawers
- Custom window treatments
- Custom lighting
- En-suite head with toilet, marble vanity, custom sink and fixtures, marble glass enclosed shower

Twin Guest Stateroom - Lower Deck, Starboard

- Twin berths w/storage drawers below, custom spread, shams & decorative pillows
- Built-in entertainment center w/ storage cabinets/drawers
- Custom window treatments
- Custom lighting
- Ensuite head w/toilet, marble vanity, custom sink and fixtures & marble glass enclosed tub/shower

Crew Quarters, Aft

- Captain's cabin w/Queen berth & private head located aft of pilothouse
- (3) Crew cabins located below aft w/over & under bunks & ensuite head
- Engineers cabin w/single berth & head located in aft lazarette
- Crew lounge w/bench seating, corian table & 2 bar stools
- True stainless steel refrigerator
- Bosch dishwasher
- Samsung 46" TV w/Kaleidescape
- Icom 502 VHF radio
- Corian countertop w/sink
- Amana commercial microwave
- (2) Sub-Zero refrigerators & Delfield refrigerator
- Crew laundry area w/Miele Touchtronics washer & dryer

Pilothouse Equipment

- (3) Crown LTD helm chairs
- Leather upholstered bench seat
- Ship's office, port aft
- (12) Storage cabinets aft in pilothouse
- Watertight doors, port & stbd
- (9) Vertical windows
- Teak sole

Electronics, Navigation & Communication

- ARPA Furuno FR2117BB X Band 96-mile Radar
- ARPA Furuno FR2137SBB S Band 96-mile Radar
- C-Plath Navigat X-MK-11 Gyro compass
- Danforth High Speed Constellation magnetic compass
- C-Plath Navipilot 4000 autopilot
- B&G Hydro 2000 depth sounder
- Furuno RD 30 depth sounder

- (2) Simrad GPS
- Furuno NavTex NX 700 A/B weather fax
- Shutter XPC Ship's computer
- (3) ACR Searchlight controls
- Nobelteck Time Zero Pro Navigation Suite
- B&G Hydra 2000 wind/speed log
- (2) Hatteland 23" multi displays
- (3) Hatteland 20" multi displays
- Furuno UAIS Transponder FA-150
- Direct TV USA, Caribbean & (5) European receivers
- Sea Tel DAC-2200 TV antenna
- GMDSS A3 RC1815 console
- Simon ship's monitoring system for fuel, water, fire & bilge alarms w/valve control
- GE ESL 1500 series fire monitoring system Communication Systems:
- Sailor 900 V-SAT
- Furuno FS 1570 SSB
- (2) Furuno FM 8800S VHF fixed
- Icom IC M502 VHF fixed
- (3) Icom ICM88 VHF handheld
- (3) Ericson Dual Band GSM cellular phones
- Panasonic KX TD1232 intercom
- Newmar Phone Com internal intercom system
- Panasonic KXTD1232 telephone system w/ 8 lines & 29 extensions

Audio & Visual Equipment

- The vessel is equipped with Apple iPad controllers in every roomMain Salon
- Samsung 55" LCD TV
- Denon AVR 2807 Surround Receiver Amplifier
- Samsung Multi System VCR/Tuner SV5000
- Yamaha DVD S657
- (2) Kaleidescape playersSkylounge
- Samsung 64" LED TV
- Denon AVR W330W Surround Receiver Amplifier
- Pioneer Blu Ray DVD
- KaleidescapeUpper Aft Deck
- Samsung 46" TVMaster Stateroom
- Samsung 54" TV
- Denon AVR Surround Receiver Amplifier
- Samsung Multi System VCR/Tuner SV5000
- Pioneer Blu Ray DVD
- Kaleidescape(2) Master Baths
- Sharp 15" TV in each(3) Guest Staterooms

- Samsung 26" TV
- Denon AVR Surround Receiver Amplifier
- Pioneer Blu Ray DVD
- KaleidescapeTwin Guest Stateroom
- Sharp 20" TV
- Denon AVR Surround Receiver Amplifier
- Samsung Multi System VCR/Tuner SV5000
- Yamaha DVD S657Crew Lounge
- Samsung 46" TV
- Denon AVR Surround Receiver Amplifier
- Pioneer Blu Ray
- KaleidescapeCaptain's Cabin
- Sharp 20" TV
- Denon AVR Surround Receiver Amplifier
- Samsung Multi System VCR/Tuner SV5000
- Yamaha DVD S657
- Kaleidescape(3) Crew Cabins
- Sharp 15" TV in each

Skylounge & Upper Aft Deck

- Custom L-shaped leather sofa, to stbd (2/19)
 - (2) Custom upholstered barrel swivel chairs (2/19)
 - Upholstered ottoman / table
 - (2) Wooden end tables w/drawers
 - Full bar forward to port w/marble top,
 - Entertainment center on fwd bulkhead w/Samsung 64" LED TV, Denon AVR surround receiver amplifier, Blue Ray DVD & Kaleidescape
 - Rectangular game table w/ (4) newly upholstered chairs (5/19)
 - Double glass, stainless steel auto sliding door to upper aft deck
 - Custom window treatments w/tie-backs
- Upper Aft Deck:**
- Teak 72" round table w/stainless steel base
 - (10) Gloster outdoor wicker chairs
 - (2) Teak round tables
 - Serpentine stairway to aft deck
 - Safety gate for stairs to lower deck
 - Overhead heating
 - (6) JL audio overhead speakers
 - Teak sole

Flybridge Equipment

- Teak 6" oval table w/ (6) teak dining chairs
- (4) Teak round end tables
- Jacuzzi hot tub, 6-person
- Walk-up bar to port w/granite top & stainless steel sink
- (2) Sub-Zero refrigerated drawers
- American commercial icemaker
- Storage cabinet to port
- Head to starboard
- (4) Teak lounge chairs
- Tec infrared BBQ grill
- Samsung 50" TV
- (6) Stereo speakers (2016)
- (4) Kahlenburg chrome trumpet horns
- Marquipt 3500lb davit

Tenders & Toys

- 22' 2005 Novurania tender w/Yamaha 250 HP O/B
- (2) 2014 Yamaha waverunners
- Max Air 3.5 CFM Dive Compressor
- Proform XP580 Treadmill & Incline workout bench

Deck Equipment

- Muir VCR11000 vertical anchor windlass
- (2) Muir VC4000 vertical capstans
- (2) 600 lbs Talon anchors
- 3.4" anchor chain, 450' each side
- Boat crane & Nautical structures davit, 3500 lb capacity
- Marquipt hydraulic gangplank passarelle
- (2) Marquipt 7-step sea stair accommodation ladders

Aft Deck Equipment

- Teak table w/ (10) teak chairs
- Sunbrite 46" waterproof HD LCD TV
- Wet bar w/stainless sink & faucet
- Aft deck is set-up for A/C hookup
- Teak decks

Electrical Equipment & Lazarette

- Twin Kilopak 99KW Generators, Port: 21,540 Hrs/ Stbd: 21,562 Hrs
- Port Gen: 21,540 total hr (overhauled '15)
- Stbd Gen: 21,562 total hrs (overhauled '15)
- Dry exhaust on port generator
- Ships Power 208V / 3-phase / 60 Hz
- (4) Mastervolt Autocharger starting batteries for each main engine
- (2) Mastervolt Autocharger starting batteries for each generator
- GMDSS 3 Mastervolt Autocharger emergency batteryLazarette:
- Control room w/ air conditioning
- Work bench/table w/vice & bench grinder
- Continental freezer
- Woodward Power Management w/ A Sea shore power convertor
- Escape hatch to aft deck

Safety & Fire Protection

Security Equipment: Simon Touch Ship's Monitoring System in crew & bridge (6) Cameras Vitec Cameras & recording display Firefighting Equipment: (3) Kidde CO2 bottle fire control system (4) CO2 Hand Extinguishers in engine Room & lazarette (32) ABC fire extinguishers GE ESL 1500 Series fire alarm Wet chemical fire suppression for galley hood Safety Equipment: (1) 6-man life raft (2) 25-man life rafts, (4) Life rings Automatic EPIRB (12) Flares Category A medical kit

Engine & Mechanical Equipment

- Twin Caterpillar 3512's @ 2250 HP eachPort: 5937 Hrs / Starboard: 5977 Hrs
- Reintjies WVS730; Ratio 3.048 to 1 gearboxes
- Michigan 5-blade fixed 56" drive
- Cuge Marine 36.5tr (438,000 BTU) Air Conditioner
- (2) Sea RO 2400 GPD Watermakers
- (2) Quantum Marine zero speed stabilizers (rebuilt '19)
- Quantum Marine 150HP hydraulic bow thruster
- EMI dual pumps steering system
- Alfa Laval fuel separator and filtration
- DeAngelo exhaust system
- Headhunter sewage system (Type II MSD - USCG Approved)
- Headhunter fresh water system w/upgraded water pumps to Headhunter Aquabox (2016)
- Village Marine oily water separator (bilge water filtration)

- (2) Air Compressors
 - Emergency helm and controls in engine room
 - Emergency stairs stbd. side aft
 - 176 gallon clean oil tank
 - 288 gallon waste oil tank
- Performance Stats:

Speed (KTS) Fuel Consumption (GPH) Liters Range (NM)

12	47	178	3789
16	100.8	382	2355
18	153.4	580	1741
20	221.5	838	1340

- Range is calculated with 10% fuel reserve and 1 generator operating while underway

Exclusions

Owner's personal belongings.

Disclaimer

The Company offers the details of this vessel or yacht in good faith but cannot guarantee or warrant the accuracy of this information nor warrant the condition of the vessel. A buyer should instruct his representatives, agents, or his surveyors, to investigate such details as the buyer desires validated. This vessel or yacht is offered subject to prior sale, price change, or withdrawal without notice.

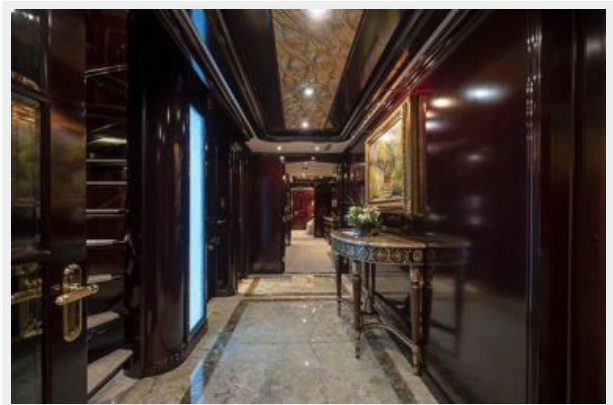
PHOTOS





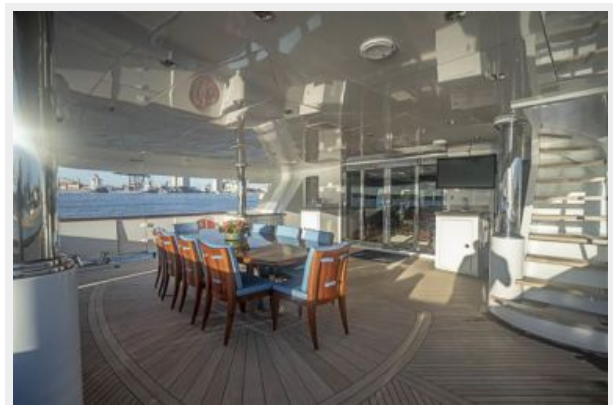


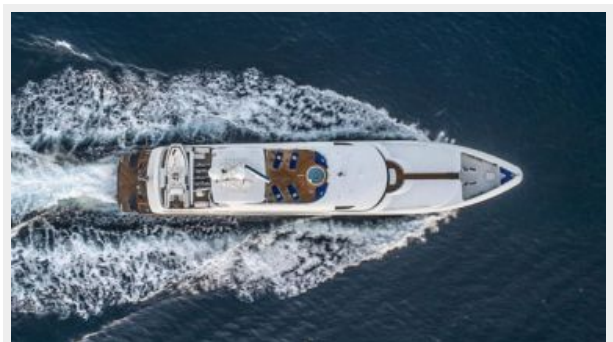














CONTACTS

Andrey Shestakov, leading yacht broker of the sales department of Shestakov Yacht Sales Inc. Shestakov Yacht Sales Inc., the official representative of the Miami/Fort Lauderdale FL headquarters.

Contact details

Email: **andrey@shestakovyachtsales.com**

Web: shestakovyachtsales.com/en/

Telephones

USA: **+1(954)274-4435**

Office hours

Monday – Saturday: **9:00 - 21:00 EDT**

Sunday: **closed**

Address



Harbour Towne Marina, 850 NE 3rd St,
STE 213, Dania, FL 33004