

## NEVER ENOUGH — TRINITY



**Судостроитель:** TRINITY

**Год постройки:** 2006

**Модель:** Моторная яхта

**Цена:** ЦЕНА ЯХТЫ ПО ЗАПРОСУ

**Местонахождение:** United States

**Длина общая:** 157' 0" (47.85m)

**Ширина:** 28' 0" (8.53m)

**Мин. осадка:** 7' 1" (2.16m)

**Макс. осадка:** 7' 4" (2.24m)

**Крейс. скорость:** 16 Kts. (18 MPH)

**Макс. скорость:** 19 Kts. (22 MPH)

Купить **NEVER ENOUGH — TRINITY** а также выбрать подходящую вам яхту из нашего каталога яхт вам поможет опытный яхтенный брокер Андрей Шестаков. На сегодняшний день компания **Shestakov Yacht Sales Inc.** имеет большое количество яхт в собственном списке продаж, а также тесно сотрудничает со всеми крупными яхтенными производителями по всему миру.

Для того чтобы купить яхту **NEVER ENOUGH — TRINITY** а также проконсультироваться по любому вопросу связанному с покупкой, продажей, чартером яхт позвоните по телефону **+7(918)465-66-44**.

# ОГЛАВЛЕНИЕ

---

ОГЛАВЛЕНИЕ	2
ХАРАКТЕРИСТИКИ	4
Обзор	4
Основная информация	4
Размеры	5
Скорость, вместимость и масса	5
Размещение	5
Корпус и палуба	5
Информация о двигателе	6
ПОДРОБНОЕ ОПИСАНИЕ	7
Overview	7
Accommodations	7
Main Salon & Dining Area	8
Galley & Laundry	8
Master Stateroom, On-Deck	9
VIP King Stateroom - Lower Deck, Port	10
(2) King Guest Staterooms - Lower Deck, Port & Stbd	10
Twin Guest Stateroom - Lower Deck, Starboard	10
Crew Quarters, Aft	11
Pilothouse Equipment	11
Electronics, Navigation & Communication	11
Audio & Visual Equipment	12
Skylounge & Upper Aft Deck	13
Flybridge Equipment	13
Tenders & Toys	14
Deck Equipment	14
Aft Deck Equipment	14
Electrical Equipment & Lazarette	15

---

Safety & Fire Protection	15
Engine & Mechanical Equipment	15
Исключения	16
Отказ от ответственности	16
ФОТОГРАФИИ	17
КОНТАКТЫ	27
Контактная информация	27
Телефоны	27
Время работы	27
Адрес	27

# ХАРАКТЕРИСТИКИ

## Обзор

NEVER ENOUGH is one of the finest Trinity Tri-Deck Motor Yachts built and currently on the market. Not only is she extremely well designed, but she was built to incredibly high specifications, commissioned by an owner who has been in yachting for many years and has owned multiple yachts. Trinity Yachts and Evan Marshall were able to not only meet but exceed expectations. As important as the design and finish, this vessel has had three owners all of whom have maintained her to the highest of standards. NEVER ENOUGH is one of a kind and offers great performance and safety. This vessel is the perfect yacht for charters and for families with children. The yacht's tenders and toys along with her impressive list of amenities offers owners and guests an enjoyable time aboard. The yacht's impeccable condition and extensive service and maintenance program also provides for uninterrupted service during owners and guest use. The vessel is in turn-key condition ready for cruising with her 10 year-ABS survey completed in October 2016 and her most recent annual survey completed in October 2018. NEVER ENOUGH had a partial refit in Oct 2018 to include new hull paint, new bottom paint, all running gear serviced to include new cutlass bearings and prop balancing, new exterior cushions, new interior carpeting along with service to many other systems and equipment. The vessel is current on all safety equipment as well as meets all American Bureau of Shipping (ABS) and Flag State (Marshall Islands) requirements.

Top end overhaul on her main engines in June 2020

## Основная информация

**Тип судна:** Моторная яхта

**Подкатегория:** Tri-Deck

**Модельный год:** 2006

**Год постройки:** 2006

**Год обновления:** 2018

**Вид обновления:** New hull paint

**Страна:** United States

**Верх:** Hardtop

**Открытая палуба мостика:** Да

## Размеры

**Длина общая:** 157' 0" (47.85m)

**Длина по ватерлинии:** 157' 0" (47.85m)

**Ширина:** 28' 0" (8.53m)

**Мин. осадка:** 7' 1" (2.16m)

**Макс. осадка:** 7' 4" (2.24m)

**Длина привального бруса:** 157' 0" (47.85m)

## Скорость, вместимость и масса

**Крейс. скорость:** 16 Kts. (18 MPH)

**Макс. скорость:** 19 Kts. (22 MPH)

**Чистый вес:** 465 Pounds

**Вместимость воды:** 2600 Gallons

**Объем топливного бака:** 15685 Gallons

## Размещение

**Всего кают:** 5

**Спальные места:** 10

**Всего ком. состава:** 9

**Каюты экипажа:** 5

**Койки экипажа:** 8

## Корпус и палуба

**Материал корпуса:** Aluminum

**Комплектация корпуса:** Semi-Displacement

**Цвет корпуса:** Blue

**Дизайнер корпуса:** Trinity Yachts

**Дизайнер экстерьера:** Trinity Yachts

**Дизайнер интерьера:** Evan Marshall

## Информация о двигателе

---

**Двигатели:** 2

**Производитель:** Caterpillar

**Модель:** 3512B

**Тип двигателя:** Inboard

**Тип топлива:** Diesel

# ПОДРОБНОЕ ОПИСАНИЕ

---

## Overview

---

NEVER ENOUGH is one of the finest Trinity Motor Yachts ever built. She offers a five stateroom layout with a full beam master stateroom on deck and four guest staterooms on the lower deck. She features rich mahogany interior joinery and high quality marble and granite throughout. The newly upholstered furnishings and soft goods are tastefully appointed with premium fabrics and silks. The vessel has been maintained to the highest of standards and is in ready-to-go condition. She has many comfortable areas for entertaining both indoor and outdoor. The flybridge features a 6-person Jacuzzi tub, gas BBQ grill, lounge and dining areas and a full bathroom. The upper deck skylounge and upper aft deck areas feature a large circular teak table for dining outdoors and a full service walk behind bar indoors. Also, there is an entertainment center with HDTV and surround sound stereo. The main deck features a comfortable main salon area ideal for relaxing and entertaining guests. Forward in the main salon is a formal dining area with a custom dining table and seating for ten. Mechanically, the vessel is in A-1 condition having her 10-year ABS survey completed in 2016 and her most recent annual survey completed in October 2018. The vessel had a partial refit in October 2018 to include new hull paint, new bottom paint, all running gear serviced to include new cutlass bearings and prop balancing, new exterior cushions, new interior carpeting along with service to many other systems and equipment. The vessel is current on all safety equipment as well as meets all American Bureau of Shipping (ABS) and Flag State (Marshall Islands) requirements.

## Accommodations

---

Accommodations for (10) guests in (5) spacious staterooms in dark cherry, all with ensuite baths with inlaid marble. Four guest staterooms are located on the lower deck, three with king sized beds and one with twin beds.

The full beam master stateroom is located forward on the main deck and is accessed through the owner's private office on the starboard side. The master stateroom has large windows, a dressing table on the port side and sofa starboard. His and hers separate walk-in closets are forward and his and hers separate baths both have inlaid marble floors. Her bath is complete with an oval marble bath and overhead fiber optic star ceiling to enhance relaxation while his has a large marble shower.

Aft of the main foyer is the open plan main salon / dining area. Large windows allow natural sun light to the spacious salon where entertaining family and friends can be either formal or casual. Forward is the dining salon providing a more formal dining setting while al-fresco dining is offered on either the air-conditioned aft main deck or upper aft deck. The galley is amidship port side on the main deck.

Above the main salon on the bridge deck is the full-beam skylounge with large windows and aft

double automatic sliding glass doors providing excellent views. The sundeck above houses the tender and a jacuzzi forward with built-in sun pads and large open areas for lounge chairs. Unobtrusive glass screens provide shelter from the breeze while allowing guests to enjoy the spectacular view.

Crew quarters are located below deck forward of the guest staterooms and include three crew cabins each with their own bathroom and shower, a large crew lounge. The double berth engineer's cabin is aft of the engine room and includes a bathroom with shower. The Captain's cabin is aft of the pilothouse and includes a queen size berth, bathroom with shower.

The interior has an International style with classic raised and fielded wooden joinery complemented with European custom furnishings and accessories.

---

## Main Salon & Dining Area

---

- Custom mahogany joinery throughout
- Automatic stainless steel/glass sliding doors to aft deck
- (2) Custom upholstered sofas w/arms, port & stbd (2/19)
- Custom upholstered loveseat (2/19)
- (2) upholstered armchairs (2/19)
- Custom glass cocktail table
- Custom mahogany half-moon table behind loveseat
- Entertainment center w/ Samsung 55" LCD TV, Denon stereo, Kaliedscape DVD/VCR & surround sound system & iPad controller
- Wet bar to port w/gold plated sink, custom fixtures, Sub-Zero refrigerator & icemaker
- Built-in cabinet w/crystal & stemware storage, stbd
- Built-in cabinetry, port & stbd w/marble top
- Custom overhead oval soffit w/mahogany & gold leaf inlay design
- Custom automatic window treatments w/blinds & new valences ('19) **Dining Area:**
- Formal dining area forward in main salon
- Custom finished dining table w/ (10) dining chairs
- Custom oval soffit w/mahogany, hand-painted inlay & light fixture
- Custom cabinetry w/marble surfaces, port & stbd
- Day head forward w/marble vanity, sink w/custom fixtures, mirror & marble flooring

---

## Galley & Laundry

---

- Miele 5-burner induction stove, oven & steamer
- Vulcan ESB36-2 Salamander & hood w/fire suppression system
- Kitchen Aid convection oven
- LG microwave
- Delfied double refrigerator & freezer
- Sub-Zero 249RP refrigerator



- Scotsman icemaker
- Miele Professional G7859 dishwasher
- Kitchen Aid trash compactor
- Sub-Zero undercounter drink refrigerator
- Custom granite surfaces throughout
- Granite bar top w/ 3 upholstered bar stools
- (2) Double stainless steel sinks
- Sharp 12" TV
- Alpine stereo w/2 overhead speakers
- Chef's pantry
- Stew pantry
- Amtico wood flooring Laundry Equipment:
- (2) Miele TouchTronic W3033 water control system washers in crew ('13)
- (2) Miele TouchTronic T8003 dryers in crew ('13)
- Maytag Neptune washer/dryer in guest foyer
- Maytag Neptune washer/dryer in lazarette
- Miele Roller Press in crew

## Master Stateroom, On-Deck

- Double door entry into master
- Centerline king berth w/upholstered headboard, custom spread & shams
- Built-in nightstands w/marble top, 3-drawers, port & stbd
- Custom built-in vanity/desk w/ 3-drawers fwd & aft, to port
- Upholstered settee w/built-in cabinets w/(6) drawers on each side to port
- Decorative table lamps
- Custom overhead soffitt w/Mahogany inlay & lighting
- Entertainment center w/Samsung 55" LCD TV, Direct TV receiver, Samsung DVD, iPad/Crestron remote controls, Denon amplifier & surround sound
- His & her walk-in closets, port & stbd
- (3) Oval windows, port & stbd
- Custom window treatments w/automatic blinds & tie-backs

Located inside Master Stateroom, Starboard Companionway:

- (2) Full Size Eurocave Wine Coolers
- Custom office desk with chair
- Built-in (6) drawer dresser His & Her Master Bath (separate):

His Bath: (Entry from starboard aft side)

- Marble, glass enclosed shower w/custom gold fixtures & dome lighting
- Marble vanity w/custom sink & gold fixtures
- Decorative light sconces
- Marble flooring

Her Bath: (Entry from port aft side)

- Roman marble Jacuzzi tub/shower w/glass enclosure & custom fixtures
- Head and Bidet
- Decorative light sconces
- Marble flooring
- Custom fixtures
- Custom window treatments
- LCD 12" TV

---

## VIP King Stateroom - Lower Deck, Port

---

- King berth w/custom upholstered headboard, storage below, custom spread & shams
- (2) Built-in nightstands w/ 3 drawers, marble tops & table lamps
- Built-in dressers & vanity w/mirror & bench
- Custom overhead soffit w/ lighting and swag drapery
- Entertainment center aft w/Samsung 26" TV, Denon surround sound, Blue Ray, Kaleidescape,
- Hanging closets
- Custom wallcoverings
- Private bath w/marble vanity, custom sink & fixtures, glass enclosed marble shower & marble flooring

---

## (2) King Guest Staterooms - Lower Deck, Port & Stbd

---

The two King Guest Staterooms are mirror images and include the same features;

- California King bed w/ drawer storage below, custom spread, shams and decorative pillows
- (2) Built-in nightstands w/3-drawers
- Built-in vanity w/stool, Entertainment Center and storage cabinets/drawers
- Custom window treatments
- Custom lighting
- En-suite head with toilet, marble vanity, custom sink and fixtures, marble glass enclosed shower

---

## Twin Guest Stateroom - Lower Deck, Starboard

---

- Twin berths w/storage drawers below, custom spread, shams & decorative pillows
- Built-in entertainment center w/ storage cabinets/drawers
- Custom window treatments
- Custom lighting
- Ensuite head w/toilet, marble vanity, custom sink and fixtures & marble glass enclosed tub/shower

---

## Crew Quarters, Aft

---

- Captain's cabin w/Queen berth & private head located aft of pilothouse
- (3) Crew cabins located below aft w/over & under bunks & ensuite head
- Engineers cabin w/single berth & head located in aft lazarette
- Crew lounge w/bench seating, corian table & 2 bar stools
- True stainless steel refrigerator
- Bosch dishwasher
- Samsung 46" TV w/Kaleidescape
- Icom 502 VHF radio
- Corian countertop w/sink
- Amana commercial microwave
- (2) Sub-Zero refrigerators & Delfield refrigerator
- Crew laundry area w/Miele Touchtronics washer & dryer

---

## Pilothouse Equipment

---

- (3) Crown LTD helm chairs
- Leather upholstered bench seat
- Ship's office, port aft
- (12) Storage cabinets aft in pilothouse
- Watertight doors, port & stbd
- (9) Vertical windows
- Teak sole

---

## Electronics, Navigation & Communication

---

- ARPA Furuno FR2117BB X Band 96-mile Radar
- ARPA Furuno FR2137SBB S Band 96-mile Radar
- C-Plath Navigat X-MK-11 Gyro compass
- Danforth High Speed Constellation magnetic compass
- C-Plath Navipilot 4000 autopilot
- B&G Hydro 2000 depth sounder
- Furuno RD 30 depth sounder

- (2) Simrad GPS
- Furuno NavTex NX 700 A/B weather fax
- Shutter XPC Ship's computer
- (3) ACR Searchlight controls
- Nobeltek Time Zero Pro Navigation Suite
- B&G Hydra 2000 wind/speed log
- (2) Hatteland 23" multi displays
- (3) Hatteland 20" multi displays
- Furuno UAIS Transponder FA-150
- Direct TV USA, Caribbean & (5) European receivers
- Sea Tel DAC-2200 TV antenna
- GMDSS A3 RC1815 console
- Simon ship's monitoring system for fuel, water, fire & bilge alarms w/valve control
- GE ESL 1500 series fire monitoring system Communication Systems:
- Sailor 900 V-SAT
- Furuno FS 1570 SSB
- (2) Furuno FM 8800S VHF fixed
- Icom IC M502 VHF fixed
- (3) Icom ICM88 VHF handheld
- (3) Ericson Dual Band GSM cellular phones
- Panasonic KX TD1232 intercom
- Newmar Phone Com internal intercom system
- Panasonic KXTD1232 telephone system w/ 8 lines & 29 extensions

## Audio & Visual Equipment

- The vessel is equipped with Apple iPad controllers in every roomMain Salon
- Samsung 55" LCD TV
- Denon AVR 2807 Surround Receiver Amplifier
- Samsung Multi System VCR/Tuner SV5000
- Yamaha DVD S657
- (2) Kaleidescape playersSkylounge
- Samsung 64" LED TV
- Denon AVR W330W Surround Receiver Amplifier
- Pioneer Blu Ray DVD
- KaleidescapeUpper Aft Deck
- Samsung 46" TVMaster Stateroom
- Samsung 54" TV
- Denon AVR Surround Receiver Amplifier
- Samsung Multi System VCR/Tuner SV5000
- Pioneer Blu Ray DVD
- Kaleidescape(2) Master Baths
- Sharp 15" TV in each(3) Guest Staterooms

- Samsung 26" TV
- Denon AVR Surround Receiver Amplifier
- Pioneer Blu Ray DVD
- KaleidescapeTwin Guest Stateroom
- Sharp 20" TV
- Denon AVR Surround Receiver Amplifier
- Samsung Multi System VCR/Tuner SV5000
- Yamaha DVD S657Crew Lounge
- Samsung 46" TV
- Denon AVR Surround Receiver Amplifier
- Pioneer Blu Ray
- KaleidescapeCaptain's Cabin
- Sharp 20" TV
- Denon AVR Surround Receiver Amplifier
- Samsung Multi System VCR/Tuner SV5000
- Yamaha DVD S657
- Kaleidescape(3) Crew Cabins
- Sharp 15" TV in each

## Skylounge & Upper Aft Deck

---

- Custom L-shaped leather sofa, to stbd (2/19)
- (2) Custom upholstered barrel swivel chairs (2/19)
- Upholstered ottoman / table
- (2) Wooden end tables w/drawers
- Full bar forward to port w/marble top,
- Entertainment center on fwd bulkhead w/Samsung 64" LED TV, Denon AVR surround receiver amplifier, Blue Ray DVD & Kaleidescape
- Rectangular game table w/ (4) newly upholstered chairs (5/19)
- Double glass, stainless steel auto sliding door to upper aft deck
- Custom window treatments w/tie-backs**Upper Aft Deck:**
- Teak 72" round table w/stainless steel base
- (10) Gloster outdoor wicker chairs
- (2) Teak round tables
- Serpentine stairway to aft deck
- Safety gate for stairs to lower deck
- Overhead heating
- (6) JL audio overhead speakers
- Teak sole

## Flybridge Equipment

---

- Teak 6" oval table w/ (6) teak dining chairs
- (4) Teak round end tables
- Jacuzzi hot tub, 6-person
- Walk-up bar to port w/granite top & stainless steel sink
- (2) Sub-Zero refrigerated drawers
- American commercial icemaker
- Storage cabinet to port
- Head to starboard
- (4) Teak lounge chairs
- Tec infrared BBQ grill
- Samsung 50" TV
- (6) Stereo speakers (2016)
- (4) Kahlenburg chrome trumpet horns
- Marquipt 3500lb davit

---

## Tenders & Toys

- 22' 2005 Novurania tender w/Yamaha 250 HP O/B
- (2) 2014 Yamaha waverunners
- Max Air 3.5 CFM Dive Compressor
- Proform XP580 Treadmill & Incline workout bench

---

## Deck Equipment

- Muir VCR11000 vertical anchor windlass
- (2) Muir VC4000 vertical capstans
- (2) 600 lbs Talon anchors
- 3.4" anchor chain, 450' each side
- Boat crane & Nautical structures davit, 3500 lb capacity
- Marquipt hydraulic gangplank passarelle
- (2) Marquipt 7-step sea stair accommodation ladders

---

## Aft Deck Equipment

- Teak table w/ (10) teak chairs
- Sunbrite 46" waterproof HD LCD TV
- Wet bar w/stainless sink & faucet
- Aft deck is set-up for A/C hookup
- Teak decks

## Electrical Equipment & Lazarette

- Twin Kilopak 99KW Generators, Port: 21,540 Hrs/ Stbd: 21,562 Hrs
- Port Gen: 21,540 total hr (overhauled '15)
- Stbd Gen: 21,562 total hrs (overhauled '15)
- Dry exhaust on port generator
- Ships Power 208V / 3-phase / 60 Hz
- (4) Mastervolt Autocharger starting batteries for each main engine
- (2) Mastervolt Autocharger starting batteries for each generator
- GMDSS 3 Mastervolt Autocharger emergency batteryLazarette:
- Control room w/ air conditioning
- Work bench/table w/vice & bench grinder
- Continental freezer
- Woodward Power Management w/ A Sea shore power convertor
- Escape hatch to aft deck

## Safety & Fire Protection

Security Equipment: Simon Touch Ship's Monitoring System in crew & bridge (6) Cameras Vitec Cameras & recording display Firefighting Equipment: (3) Kidde CO2 bottle fire control system (4) CO2 Hand Extinguishers in engine Room & lazarette (32) ABC fire extinguishers GE ESL 1500 Series fire alarm Wet chemical fire suppression for galley hood Safety Equipment: (1) 6-man life raft (2) 25-man life rafts, (4) Life rings Automatic EPIRB (12) Flares Category A medical kit

## Engine & Mechanical Equipment

- Twin Caterpillar 3512's @ 2250 HP eachPort: 5937 Hrs / Starboard: 5977 Hrs
- Reintjies WVS730; Ratio 3.048 to 1 gearboxes
- Michigan 5-blade fixed 56" drive
- Cuge Marine 36.5tr (438,000 BTU) Air Conditioner
- (2) Sea RO 2400 GPD Watermakers
- (2) Quantum Marine zero speed stabilizers (rebuilt '19)
- Quantum Marine 150HP hydraulic bow thruster
- EMI dual pumps steering system
- Alfa Laval fuel separator and filtration
- DeAngelo exhaust system
- Headhunter sewage system (Type II MSD - USCG Approved)
- Headhunter fresh water system w/upgraded water pumps to Headhunter Aquabox (2016)
- Village Marine oily water separator (bilge water filtration)

- (2) Air Compressors
- Emergency helm and controls in engine room
- Emergency stairs stbd. side aft
- 176 gallon clean oil tank
- 288 gallon waste oil tank

### Performance Stats:

Speed (KTS)	Fuel Consumption (GPH)	Liters	Range (NM)
12	47	178	3789
16	100.8	382	2355
18	153.4	580	1741
20	221.5	838	1340

- Range is calculated with 10% fuel reserve and 1 generator operating while underway

## Исключения

---

При продаже яхты исключаются личные вещи владельца.

## Отказ от ответственности

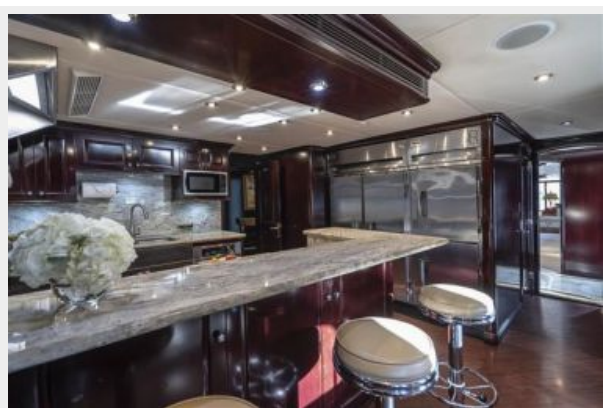
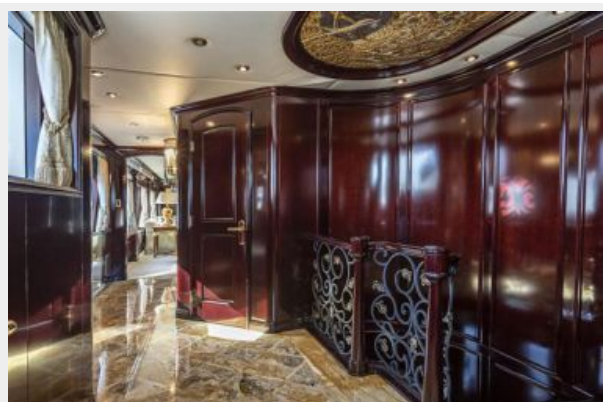
---

Компания предоставляет описание судна или яхты добросовестно, но не может гарантировать точность этой информации, а также не ручается за техническое состояние. Покупатель должен проинструктировать своих агентов или оценщиков исследовать представленную информацию более подробно, по собственному желанию. Продажа судна или яхты, изменение цены или снятие с продажи будет происходить без предварительного уведомления.



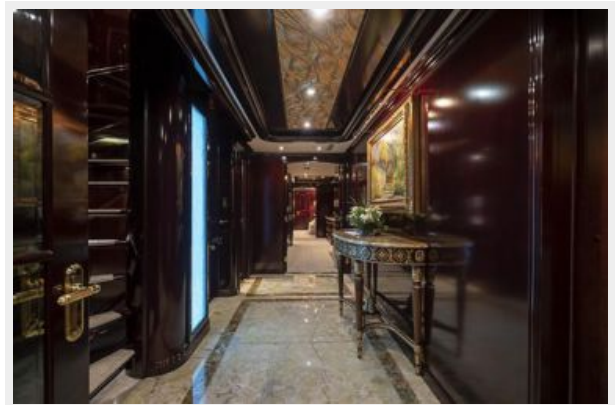
# ФОТОГРАФИИ



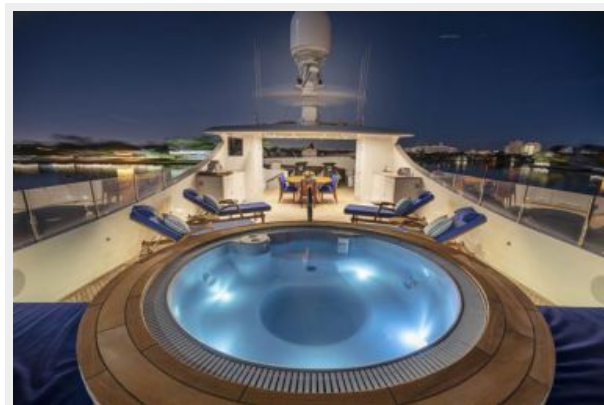


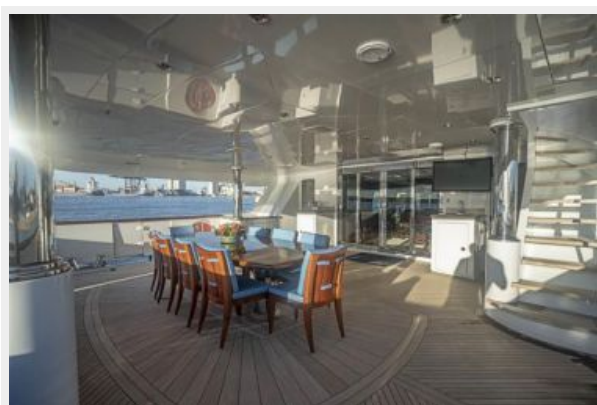




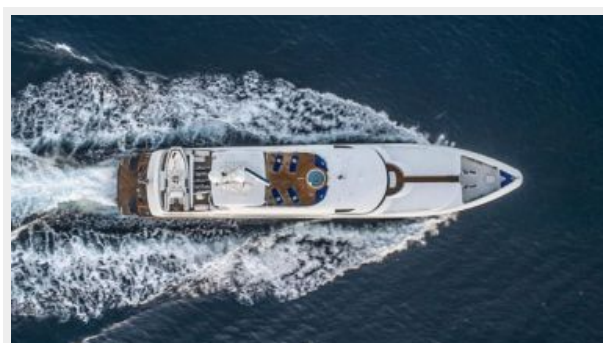
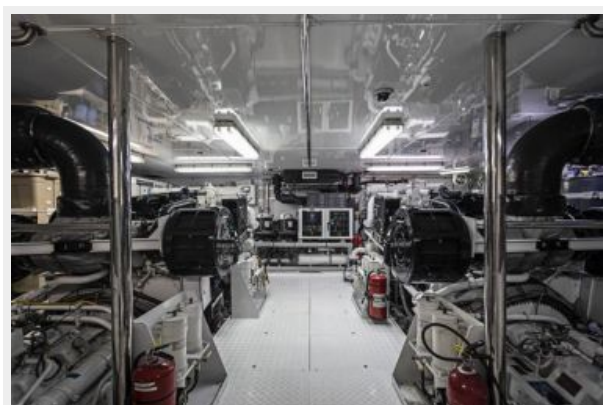














# КОНТАКТЫ

---

Андрей Шестаков (Andrey Shestakov) – ведущий яхтенный брокер отдела продаж яхт и судов компании Shestakov Yacht Sales Inc. Официальный представитель Shestakov Yacht Sales Inc. для русскоговорящих клиентов в центральном офисе компании в Майами/Форт Лодердейл/Флорида/США.

## Контактная информация

---

Email: [andrey@shestakovyachtsales.com](mailto:andrey@shestakovyachtsales.com)

Web: [shestakovyachtsales.com](http://shestakovyachtsales.com)

## Телефоны

---

Краснодарский край: **+7(918)465-66-44**

США, Майами, Флорида: **+1(954)274-4435**

## Время работы

---

Понедельник – Суббота: **9:00 - 21:00**  
EDT

Воскресенье: **Закрето**

## Адрес

---



Harbour Towne Marina, 850 NE 3rd St,  
STE 213, Dania, FL 33004