

## SECOND THOUGHTS — SUNSEEKER



**Builder:** SUNSEEKER

**Year Built:** 2014

**Model:** Motor Yacht

**Price:** PRICE ON APPLICATION

**Location:** United States

**LOA:** 68' 0" (20.73m)

**Beam:** 16' 9" (5.11m)

**Max Draft:** 5' 2" (1.57m)

**Cruise Speed:** 24 Kts. (28 MPH)

**Max Speed:** 33 Kts. (38 MPH)

Our experienced yacht broker, Andrey Shestakov, will help you choose and buy a yacht that best suits your needs **Second Thoughts — SUNSEEKER** from our catalogue. Presently, at Shestakov Yacht Sales Inc., we have a wide variety of yachts available on our sale's list. We also work in close contact with all the big yacht manufacturers from all over the world.

If you would like to buy a yacht **Second Thoughts — SUNSEEKER** or would like help answering any questions concerning purchasing, selling or chartering a yacht, please call **+1(954)274-4435**

---

# TABLE OF CONTENTS

---

TABLE OF CONTENTS	2
SPECIFICATIONS	3
Overview	3
Basic Information	3
Dimensions	3
Speed, Capacities and Weight	3
Accommodations	3
Hull and Deck Information	4
Engine Information	4
DETAILED INFORMATION	5
Fly Bridge	5
Aft Deck	5
Accommodations	5
Galley	7
Main Deck Helm	7
Deck Equipment	7
Mechanical	8
Electrical Equipment	8
Construction	8
Exclusions	9
Disclaimer	9
PHOTOS	10
CONTACTS	18
Contact details	18
Telephones	18
Office hours	18
Address	18

---

# SPECIFICATIONS

---

## Overview

---

Beautifully maintained, low hours.

3 Stateroom, 3 head layout plus crew aft

Twin MTU 8V2000CR's @1200 hp each

Bottom paint and new zincs, Oct, 2016

## Basic Information

---

**Category:** Motor Yacht

**Sub Category:** Flybridge

**Model Year:** 2014

**Year Built:** 2014

**Country:** United States

**Vessel Top:** Bimini Top

## Dimensions

---

**LOA:** 68' 0" (20.73m)

**LWL:** 53' 10" (16.41m)

**Beam:** 16' 9" (5.11m)

**Max Draft:** 5' 2" (1.57m)

## Speed, Capacities and Weight

---

**Cruise Speed:** 24 Kts. (28 MPH)

**Cruise Speed Range:** 300

**Max Speed:** 33 Kts. (38 MPH)

**Displacement:** 82209 Pounds

**Water Capacity:** 211 Gallons

**Fuel Capacity:** 925 Gallons

## Accommodations

---

**Total Cabins:** 3

**Total Heads:** 3

---

## Hull and Deck Information

---

**Hull Material:** Fiberglass

**Hull Configuration:** Deep Vee

---

## Engine Information

---

**Engines:** 2

**Manufacturer:** MTU

**Model:** 8V2000CR

**Engine Type:** Inboard

**Fuel Type:** Diesel

---

## DETAILED INFORMATION

---

### Fly Bridge

---

- Bimini Top
- Teak deck
- U-settee w/ teak table
- Sunpad forward opposite helm
- Wet bar w/ice maker, cool box and BBQ grill
- 2 person Helm chair
- Hydraulic power steering
- 2 x Chartplotter/GPS/radar
- Autopilot
- Depth & speed display
- VHF
- Remote control searchlight

### Aft Deck

---

- Teak deck
- Stern gate
- Cockpit speakers with CD remote
- Large Settee w/storage below
- Folding Table on pedestal
- Large stern sunpad
- 24v Overhead cockpit lights
- 24v Low-level courtesy lights
- Engine room access hatch
- Stairway to fly bridge

### Accommodations

---

#### SALON

- U-settee w/cocktail table
- Storage below settee
- 55" TV on hi/lo
- Blu-ray/DVD/CD cinema sound system
- AirPort Express
- Liquor cabinet
- Stainless steel sliding door to cockpit

- Dining table forward w/seating for up to 8 (P)

### **MASTER-Full beam, Aft**

- Centerline queen berth w/storage below
- Cabinet and drawer storage
- 2 x 24v reading lights
- 2 x Night stands
- Walk-in closet
- 2 x large windows with opening portholes, screens and blinds
- Settee
- Vanity w/chair
- Air Conditioning
- 32" TV/Blu-ray/DVD/CD player with speakers
- En suite head w/shower

### **VIP**

- Centerline double berth w/storage below
- Drawer in base-end
- 2 x 24v reading lights
- Outboard shelving and cabinets
- Overhead bedside cabinets
- Hanging locker w/mirror
- 24v Overhead LED lights
- 2 x opening portholes w/screens
- Deck hatch with blind and screen
- Skylight
- A/C
- 32" TV/Blu-ray/DVD/CD player with speakers
- En suite head w/shower

### **GUEST CABIN-Starboard**

- 2 x Twin berths w/storage below
- Under-berth storage
- 2 x 24v reading lights
- Hanging locker
- 24v LED Overhead lighting
- Opening porthole w/screen and blinds
- A/C
- 22" TV/Blu-ray/DVD/CD player with speakers
- En suite head w/shower

### **CREW CABIN**

- Twin berths
- Hanging locker
- A/C
- Opening porthole w/screen
- Head & separate shower

---

## Galley

---

- 3 Burner ceramic cooktop
- Refrigerator & freezer
- Microwave/convection oven
- Cabinet and drawer storage
- China and flatware for 8
- Hand-held fire extinguisher
- First aid kit
- Wood flooring

---

## Main Deck Helm

---

- Twin helm seats
- Navigation console w/chart area
- Hydraulic power steering
- MTU engine instrumentation
- Simrad Chart plotter w/GPS/radar
- Autopilot
- Speed and depth display
- VHF radio w/DSC
- Rudder indicator
- Water & fuel tank gauges
- Trim tab controls
- Single-lever electronic engine controls
- Magnetic compass
- Horn

---

## Deck Equipment

---

- Stainless steel bow roller with anchor stop
- Stainless steel bow plate
- Delta anchor and 60m chain (galvanized)
- Electric winch and capstan with deck and helm controls
- Chain locker with fender storage

- 2 x Pantograph windscreen wipers and washers
- Garage for tender
- Fore deck sun pad w/folding back rest
- Hydraulic passerelle
- Hydraulic lift platform
- Teak laid swim platform and steps
- Hot & cold swim shower
- Stainless steel swim ladde

---

## Mechanical

---

- Stainless steel bow roller with anchor stop
- Stainless steel bow plate
- Delta anchor and 60m chain (galvanized)
- Electric winch and capstan with deck and helm controls
- Chain locker with fender storage
- 2 x Pantograph windscreen wipers and washers
- Garage for tender
- Fore deck sun pad w/folding back rest
- Hydraulic passerelle
- Hydraulic lift platform
- Teak laid swim platform and steps
- Hot & cold swim shower
- Stainless steel swim ladde

---

## Electrical Equipment

---

- 19kW 50Hz generator - 1010 hours
- AC dockside connection
- Galvanic isolator
- 8 x 24v engine batteries
- 4 x 24v domestic batteries
- 2 x 12v generator batteries
- Alternator split charging system
- 24v Battery charger
- 12v Battery charger
- Water heater
- AC electrical sockets throughout the boat
- 24v hand light and cable

---

## Construction

---



- Hand-laid GRP
- Gel coat including stripes
- Vinylester skin coat with powderbound mat
- Stitched multi-axial reinforced single-skin bottom
- Balsa-cored hull topsides
- PVC foam-cored deck and superstructure
- Hull stiffened with longitudinal stringers supported by transverse bulkheads and floors

## Exclusions

---

Owner's personal belongings.

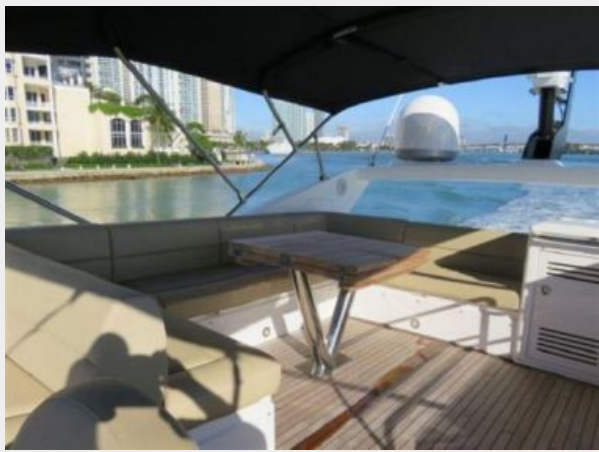
## Disclaimer

---

The Company offers the details of this vessel or yacht in good faith but cannot guarantee or warrant the accuracy of this information nor warrant the condition of the vessel. A buyer should instruct his representatives, agents, or his surveyors, to investigate such details as the buyer desires validated. This vessel or yacht is offered subject to prior sale, price change, or withdrawal without notice.

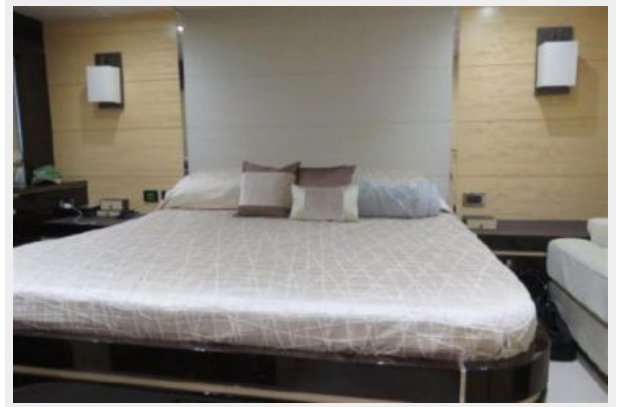
# PHOTOS

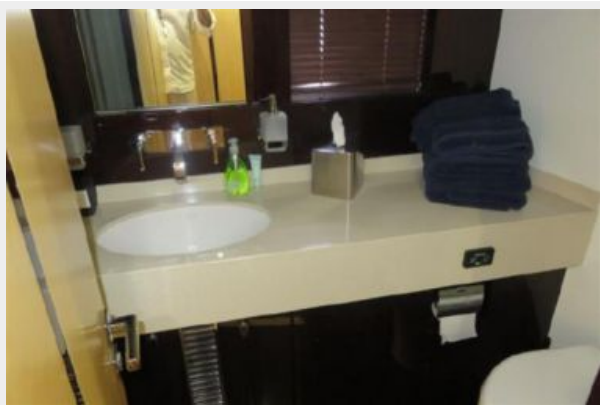
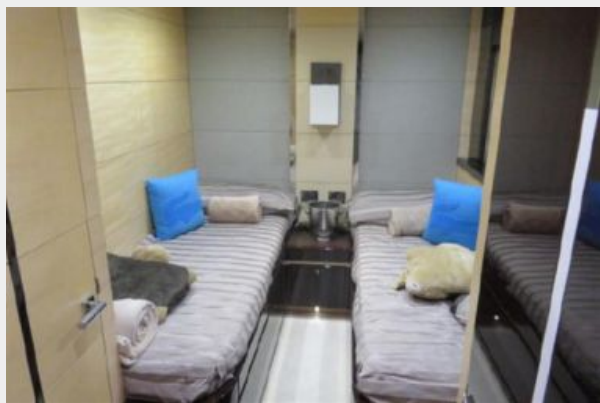
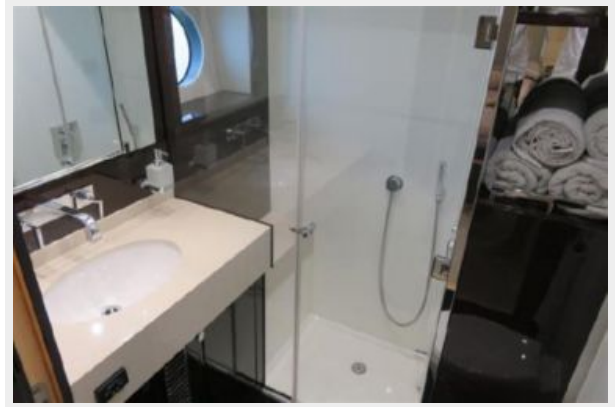


















---

# CONTACTS

---

Andrey Shestakov, leading yacht broker of the sales department of Shestakov Yacht Sales Inc. Shestakov Yacht Sales Inc., the official representative of the Miami/Fort Lauderdale FL headquarters.

---

## Contact details

---

Email: [andrey@shestakovyachtsales.com](mailto:andrey@shestakovyachtsales.com)

Web: [shestakovyachtsales.com/en/](http://shestakovyachtsales.com/en/)

---

## Telephones

---

USA: +1(954)274-4435

---

## Office hours

---

Monday – Saturday: **9:00 - 21:00** EDT

Sunday: **closed**

---

## Address

---



Harbour Towne Marina, 850 NE 3rd St,  
STE 213, Dania, FL 33004