

## MAGIC WIND — O'DAY



**Судостроитель:** O'DAY

**Год постройки:** 1986

**Модель:** Крейсерская яхта

**Цена:** ЦЕНА ЯХТЫ ПО ЗАПРОСУ

**Местонахождение:** United States

**Длина общая:** 27' 0" (8.23m)

**Ширина:** 9' 0" (2.74m)

**Мин. осадка:** 3' 6" (1.07m)

Купить **Magic wind — O'DAY** а также выбрать подходящую вам яхту из нашего каталога яхт вам поможет опытный яхтенный брокер Андрей Шестаков. На сегодняшний день компания **Shestakov Yacht Sales Inc.** имеет большое количество яхт в собственном списке продаж, а также тесно сотрудничает со всеми крупными яхтенными производителями по всему миру.

Для того чтобы купить яхту **Magic wind — O'DAY** а также проконсультироваться по любому вопросу связанному с покупкой, продажей, чартером яхт позвоните по телефону **+7(918)465-66-44**.

# ОГЛАВЛЕНИЕ

---

ОГЛАВЛЕНИЕ	2
ХАРАКТЕРИСТИКИ	3
Обзор	3
Основная информация	3
Размеры	3
Скорость, вместимость и масса	3
Размещение	3
Корпус и палуба	4
ПОДРОБНОЕ ОПИСАНИЕ	5
Walkthrough	5
Cockpit and Deck	5
Salon	5
Galley	6
Accommodations	6
Head	6
Mechanical	7
Disclaimer	7
Исключения	7
Отказ от ответственности	7
ФОТОГРАФИИ	8
КОНТАКТЫ	15
Контактная информация	15
Телефоны	15
Время работы	15
Адрес	15

# ХАРАКТЕРИСТИКИ

## Обзор

FALL SALE / PRICE REDUCTION - 1986 O'Day 272 in good condition that has been well maintained and well sailed. All systems in working condition, good electronics (depth finder, chart plotter, auto pilot), and reverse cycle heat and AC. Upgrades include new mainsail in 2014, new electrical wiring (cabin & mast), LED lighting (spreader, cabin floor and cockpit), bottom soda blasted in 2015 and repainted with 8 coats of barrier paint and 2 coats bottom paint. Strong Westerbeke 10hp diesel inboard. This boat is equipped and ready to go. Storage Fees paid through May 1, 2018!!!

## Основная информация

**Тип судна:** Крейсерская яхта

**Модельный год:** 1986

**Год постройки:** 1986

**Страна:** United States

## Размеры

**Длина общая:** 27' 0" (8.23m)

**Длина по ватерлинии:** 22' 11" (6.98m)

**Ширина:** 9' 0" (2.74m)

**Мин. осадка:** 3' 6" (1.07m)

## Скорость, вместимость и масса

**Водоизмещение:** 5375 Pounds

**Вместимость воды:** 16 Gallons

**Объем топливного бака:** 9 Gallons

## Размещение

**Всего кают:** 2

**Всего коек:** 2

**Всего ком. состава:** 1

---

## Корпус и палуба

---

**Материал корпуса:** Fiberglass

**Комплектация корпуса:** Monohull

---

# ПОДРОБНОЕ ОПИСАНИЕ

---

## Walkthrough

---

The first impression one gets when seeing Magic Wind is the spacious cockpit area and unobstructed access to the decks, salon and drop down swim ladder. Deck areas, lines, sails and forward anchor locker well organized and maintained. The companionway to the salon has a sunbrella cover for protection and heat deterrent. Down four steps is the main cabin with the galley to starboard and navigation station to port. Aft of and under the steps is the engine compartment and aft berth is to port. The main salon area features port and starboard bench style seating. A dropdown table opens up to a dinette style arrangement. Forward of the salon area is a separate head. Forward of the head is the master berth. Passageway from the salon to head and head to forward berth are separated by privacy doors.

## Cockpit and Deck

---

The cockpit is well proportioned to the boat with ample room for 4 adults. To starboard there is under seating storage for the dual batteries (starter battery replaced in 2016), Sport12 dual bank battery charger, emergency bilge pump, fire extinguisher, shore power connection (30 amp with 50ft cord), water-fuel separator and controls. In the aft starboard corner of the cockpit and along the transom bulkhead are the engine controls (choke, throttle, tachometer, oil pressure and water pressure gauges) along with the tiller auto pilot and tiller tamer. The tiller mounted to the transom has a hand made handle comprised of beautiful layered wood and a gloss varnish finish. Forward and mounted on the cabin bulkhead is the compass (port side) and multifunction Lowrance 7HD (depth finder, fish finder, chart plotter and AIS tie in with the marine radio). Mainsail lines come to the starboard side of the cabin with the roller furler lines to port and starboard of the cockpit. The side decks and forward decking have nonskid textured finish with wide walk ways to get forward and aft. Teak handrails are mounted to the top of the main cabin for added safety when maneuvering along the side decks. Forward is the anchor locker with a Danforth style anchor and ground tackle (20ft of chain and 100ft of line). Another nice safety feature are the "easy grab" plastic protective sleeves for the sidestays / shrouds. Main sail new in 2014 and furling Genoa in very good condition. Upgrades - New bimini, tiller, companionway and main sail covers (2014) - All new dock and sail lines (2014) - New foredeck light with steaming light built in (2014) - LED spreader light and cockpit lights (blue) - 2014 - New in-mast electrical wiring (2014) There is a stainless steel Magma gas barbecue grill mounted on the aft cockpit railing.

## Salon

---

The salon area is spacious and well laid out with 6ft 2in head room. To starboard is the galley and to port is the navigation station. Forward and to port and starboard is the settee and dinette with bench seating (with padded back rests and under seat storage for spare tools, parts and

boat and engine manuals). All upholstery is in good condition. There is a drop down table mounted to the forward salon bulkhead. This table opens up to form the dinette and has ample seating for four. Deep shelf storage is provided above the bench seats. There are four overhead lights, two reading lights mounted on the forward salon bulkhead and a single overhead hatch to provide lighting and ventilation. All lights throughout the vessel have been converted to LED. The navigation station features the main electrical panel (upgraded 2014), VHF Marine Radio - Matrix 2200 - dual station (1yo), West Marine stereo system with remote Bluetooth speakers in the cockpit and cabin. The navigation station also features multiple storage drawers (2 up / 2 down) and working surface. Forward to port and mounted on port side salon bulkhead is the combination COLBY TV / DVD player. Upgrades (2014) - All new electrical wiring, circuit panel and lighting - LED accent floor lights in cabin (red/white combo) and cockpit lights (blue) - Central air conditioning with new water pump (w/ 3 year warranty) and heat - Upgrader new wood interior (shelving, cabinets, nav station, microwave cabinet - Installation of USB ports (2 in V-berth, 1 on stbd salon bulkhead, 1 on radio) - Plexiglas (smoked glass) and screens for companionway

---

## Galley

Stepping down from the cockpit is the fully functional L-shaped galley to starboard. The galley features: - Stainless steel sink (to aft) with isolated thru-hull - Ice box (to aft) - drains to bilge - Cutting board / prep area with under storage - Danby Microwave up - Storage shelves with sliding glass door to aft - Cabinets down (2) - Overhead light - Convenience outlets Upgrades - New microwave oven (2014) and custom wood cabinet

---

## Accommodations

Magic Wind is configured to sleep four adults with the forward and aft berths. The aft berth is accessed to port side by the navigation station. This berth consists of a 6ft plus double berth. There is a port side storage shelf and an A/C vent and overhead dome LED light. The forward berth is a V-berth configuration. This berth has side storage, overhead lighting, an overhead hatch for added ventilation, dual USB ports and under berth storage. All cushions for both berths are in very good condition

---

## Head

Located between the salon and forward berth is the head. The sink is located to port and the head is located to starboard. There is a working portal over the sink. Storage is provided behind the mirrored medicine cabinet. Added storage is provided behind the head and on shelving above the head. Upgrades - New manual marine head w/ 16 gallon holding tank (2014)

---

## Mechanical

---

The O'Day 272 features a Westerbeke 10-Two naturally aspirating 10hp diesel inboard engine. The engine is located under the stairs down into the salon from the cockpit. There is full access to the engine from all sides. The engine is in very good condition and has a newly rebuilt transmission. Upgrades - Newly rebuilt transmission (2010) - Fuel tanks reconditioned (2015) - New starter battery (2016)

---

## Disclaimer

---

The Company offers the details of this vessel in good faith but cannot guarantee or warrant the accuracy of this information nor warrant the condition of the vessel. A buyer should instruct his agents, or his surveyors, to investigate such details as the buyer desires validated. This vessel is offered subject to prior sale, price change, or withdrawal without notice.

---

## Исключения

---

При продаже яхты исключаются личные вещи владельца.

---

## Отказ от ответственности

---

Компания предоставляет описание судна или яхты добросовестно, но не может гарантировать точность этой информации, а также не ручается за техническое состояние. Покупатель должен проинструктировать своих агентов или оценщиков исследовать представленную информацию более подробно, по собственному желанию. Продажа судна или яхты, изменение цены или снятие с продажи будет происходить без предварительного уведомления.

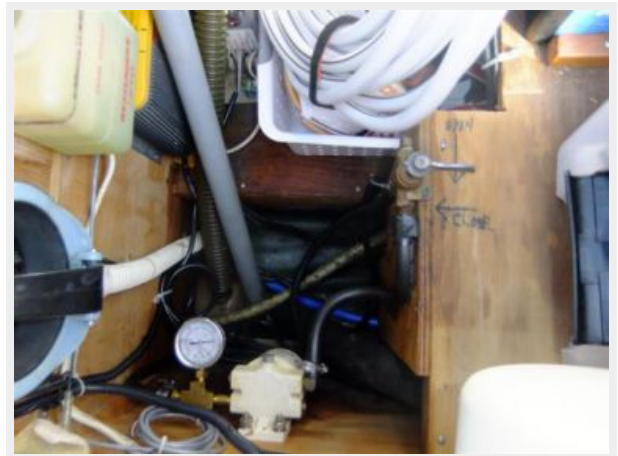
# ФОТОГРАФИИ

















# КОНТАКТЫ

---

Андрей Шестаков (Andrey Shestakov) – ведущий яхтенный брокер отдела продаж яхт и судов компании Shestakov Yacht Sales Inc. Официальный представитель Shestakov Yacht Sales Inc. для русскоговорящих клиентов в центральном офисе компании в Майами/Форт Лодердейл/Флорида/США.

## Контактная информация

---

Email: [andrey@shestakovyachtsales.com](mailto:andrey@shestakovyachtsales.com)

Web: [shestakovyachtsales.com](http://shestakovyachtsales.com)

## Телефоны

---

Краснодарский край: **+7(918)465-66-44**

США, Майами, Флорида: **+1(954)274-4435**

## Время работы

---

Понедельник – Суббота: **9:00 - 21:00**  
EDT

Воскресенье: **Закрито**

## Адрес

---



Harbour Towne Marina, 850 NE 3rd St,  
STE 213, Dania, FL 33004