

YOSSARIAN — SEA RAY



Builder: SEA RAY

LOA: 50' (15.24mm)

Year Built: 1996

Model: Cruising Yacht

Price: PRICE ON APPLICATION

Location: United States

Our experienced yacht broker, Andrey Shestakov, will help you choose and buy a yacht that best suits your needs **Yossarian — SEA RAY** from our catalogue. Presently, at Shestakov Yacht Sales Inc., we have a wide variety of yachts available on our sale's list. We also work in close contact with all the big yacht manufacturers from all over the world.

If you would like to buy a yacht **Yossarian — SEA RAY** or would like help answering any questions concerning purchasing, selling or chartering a yacht, please call **+1(954)274-4435**

TABLE OF CONTENTS

| | |
|---------------------------|---|
| TABLE OF CONTENTS | 2 |
| SPECIFICATIONS | 3 |
| Overview | 3 |
| Basic Information | 3 |
| Dimensions | 4 |
| Accommodations | 4 |
| Hull and Deck Information | 4 |
| Engine Information | 4 |
| PHOTOS | 5 |
| CONTACTS | 8 |
| Contact details | 8 |
| Telephones | 8 |
| Office hours | 8 |
| Address | 8 |

SPECIFICATIONS

Overview

(LOCATION: Cocoa Beach FL) This Sea Ray 500 Sundancer is designed to be the ultimate day cruiser with lots of room and power while providing luxurious accommodations for overnight and weekend getaways.

On deck we have a carpeted cockpit with radar arch and bimini top with full canvas enclosure. The helm features an adjustable helm seat with extra-wide companion seating. The spacious cockpit features a huge wraparound lounge with removable table and a filler cushion that converts sun lounge. An L-shaped transom lounges is included for those seeking a wind-in-their-face cruise. There's a port side wet bar with ice maker. A transom door gives access to the integrated swim platform, transom locker, and freshwater shower. The foredeck features stainless steel bow rail, searchlight, bow pulpit with roller, anchor with chain, and windlass.

The spacious salon has a starboard galley with upper and lower cherry cabinets, molded fiberglass countertop with integrated sink, a electric cook top, built-in microwave oven, Nutone food center, a stand-up refrigerator/freezer, and a breakfast bar with two stool. Aft of the galley is a large curved curved settee and adjustable cherry table. Port side is an entertainment with TV, DVD, Clarion sound system with CD player, and ice maker. Reverse cycle HVAC with digital controls maintains cabin comfort, a Westerbeke genset provides offshore electrical power, and a central vacuum system makes housekeeping easy.

There are two private staterooms. The forward master stateroom has queen berth, under-berth storage, dressing table with ottoman, and cedar-lined hanging lockers. The en suite head mirrored vanity, Vacuflush head, and shower stall. The guest stateroom has upper and lower full sized berths, under-berth storage, hanging locker, and private head access. The guest/day head compartment has mirrored vanity, Vacuflush head, and shower stall.

This big Sundancer is powered by twin 480-hp Detroit Diesel engines. She is well equipped, carefully maintained, and ready to cruise. Call now for more information and to schedule a showing of this very desirable 50' Sea Ray.

Basic Information

Category: Cruising Yacht

Sub Category: Express

Model Year: 1996

Year Built: 1996

Country: United States

Dimensions

LOA: 50' (15.24mm)

Accommodations

Total Cabins: 2

Hull and Deck Information

Hull Material: Fiberglass

Engine Information

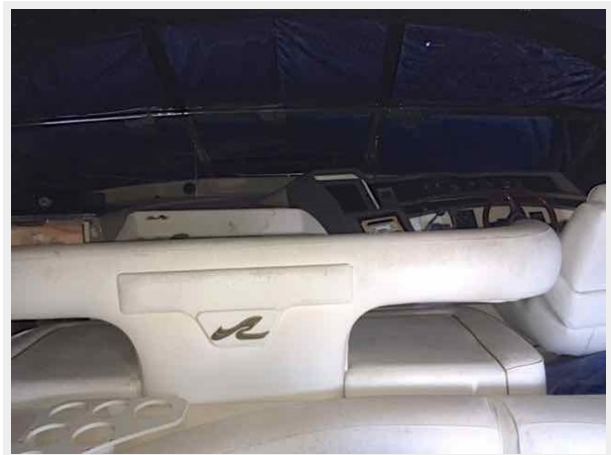
Engines: 2

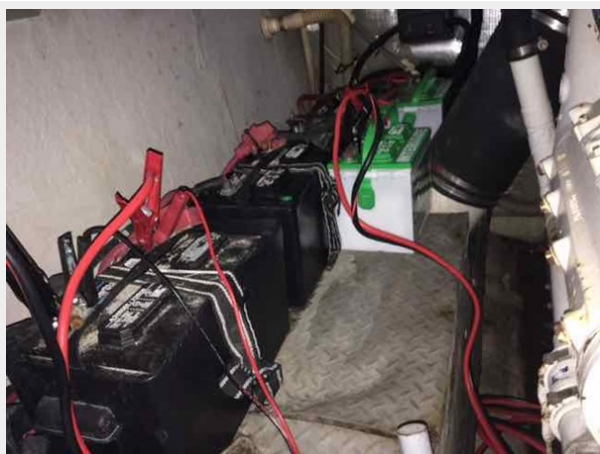
Manufacturer: Detroit Diesel

Engine Type: Inboard

Fuel Type: Diesel

PHOTOS







CONTACTS

Andrey Shestakov, leading yacht broker of the sales department of Shestakov Yacht Sales Inc. Shestakov Yacht Sales Inc., the official representative of the Miami/Fort Lauderdale FL headquarters.

Contact details

Email: andrey@shestakovyachtsales.com

Web: shestakovyachtsales.com/en/

Telephones

USA: +1(954)274-4435

Office hours

Monday – Saturday: **9:00 - 21:00** EDT

Sunday: **closed**

Address



Harbour Towne Marina, 850 NE 3rd St,
STE 213, Dania, FL 33004