

LILY OF THE SEA — VIKING



Builder: VIKING

Year Built: 1995

Model: Motor Yacht

Price: PRICE ON APPLICATION

Location: United States

LOA: 47' 0" (14.33m)

Beam: 15' 6" (4.72m)

Max Draft: 4' 5" (1.35m)

Cruise Speed: 27 Kts. (31 MPH)

Max Speed: 32 Kts. (37 MPH)

Our experienced yacht broker, Andrey Shestakov, will help you choose and buy a yacht that best suits your needs **Lily of the Sea — VIKING** from our catalogue. Presently, at Shestakov Yacht Sales Inc., we have a wide variety of yachts available on our sale's list. We also work in close contact with all the big yacht manufacturers from all over the world.

If you would like to buy a yacht **Lily of the Sea — VIKING** or would like help answering any questions concerning purchasing, selling or chartering a yacht, please call **+1(954)274-4435**

TABLE OF CONTENTS

TABLE OF CONTENTS	2
SPECIFICATIONS	4
Overview	4
Basic Information	4
Dimensions	4
Speed, Capacities and Weight	4
Accommodations	4
Hull and Deck Information	5
Engine Information	5
DETAILED INFORMATION	6
Accommodations	6
Main Salon	6
Galley	6
Master Stateroom	7
Guest Stateroom	7
Guest Head	7
Navigation Station	7
Cockpit	8
Engines	8
Electrical	8
Fishing	9
Disclaimer	9
Exclusions	9
Disclaimer	9
PHOTOS	10
CONTACTS	18
Contact details	18
Telephones	18

Office hours	18
Address	18

SPECIFICATIONS

Overview

Open to trade-ins. Financing is available. 1995 viking Convertible, 47' Lily of the Sea, Sleeps 6 in 2 stateroom. There are 2 owner and guest staterooms including 2 guest heads and 2 guest showers.

New Garmin GPS Map 4210 Sept 2013 New head pumps. Sept 2013

Basic Information

Category: Motor Yacht

Sub Category: Convertible

Model Year: 1995

Year Built: 1995

Country: United States

Cockpit: Yes

Dimensions

LOA: 47' 0" (14.33m)

Beam: 15' 6" (4.72m)

Max Draft: 4' 5" (1.35m)

Speed, Capacities and Weight

Cruise Speed: 27 Kts. (31 MPH)

Max Speed: 32 Kts. (37 MPH)

Displacement: 463000 Pounds

Water Capacity: 160 Gallons

Fuel Capacity: 700 Gallons

Accommodations

Total Cabins: 2

Hull and Deck Information

Hull Material: Fiberglass

Engine Information

Engines: 2

Manufacturer: MAN

Model: 2848LTE

Engine Type: Inboard

Fuel Type: Diesel

DETAILED INFORMATION

Accommodations

- **Overview: Sleeps 6 in staterooms**
- **There are 2 owner and guest staterooms including 2 guest heads and 2 guest showers**

Main Salon

- **L-Shaped sofa**
- **Teak Interior**
- **Teak cocktail Hi-Low table**
- **19" JVC TV**
- **Sleeper**
- **Teak dinette table**
- **Blinds**
- **Salon end table**
- **JVC VCR**
- **JVC AM / FM receiver**
- **JVC CD Player**
- **Cell phone in salon**
- **Raised panel cabinets**
- **Carpet runners**
- **Icom VHF IC-M56**
- **Central vacuum**

Galley

- **Bar top**
- **Cruiser air conditioner w/ SMX controls**
- **Princess 2 burner stove**
- **New full refrigerator 5 / 05**
- **Teak Dinette**
- **Garbage disposal**
- **Sharp convection microwave**
- **Kenmore washer and dryer**

Master Stateroom

- Head
- Shower Stall
- Vacuflush
- 13" JVC television
- JVC VCR
- Designer comforter
- Designer pillows
- Cruiseair Air Conditioner SMX controls
- Carpeting
- Raised panel cabinets
- Overhead lights
- Overhead hatch

Guest Stateroom

- Starboard bunk set up
- 13" RCA TV / VCR
- Closets
- Raised panel doors
- Access to head
- Carpeting
- Overhead lights

Guest Head

- Guest head and stall shower
- Vacuflush head
- Vanity
- Lighting

Navigation Station

- Raytheon 48 mile radar
- SEA 156 VHF
- Northstar 952 GPS
- SEA 322 SSB
- Furuno G7- 37 GPS
- Ray 430 Loudhailer
- Ocean PC GPS / Plotter

- **ACR remote spotlight**
- **Furuno 292 color sounder**
- **Richie 5' compass**
- **Robertson AP20 Autopilot**
- **Polyplaner AM / FM CD Stereo**
- **Autohelm Tridata**
- **Instrument panel w/VDO gauges**

Cockpit

- **Fish box**
- **Armstrong ladder**
- **Bait well**
- **Transom Door**
- **Bait Freezer**
- **Transom gate**
- **Cockpit awning**
- **Step Box**
- **(16) Lee rod holders**
- **Glendinning cablemaster**
- **Spreader lights**
- **Cockpit carpet**
- **Freezer in cockpit sole**
- **Cockpit aft curtain**

Engines

- **Twin MAN 2848LTE; 800hp each; Diesels IB; hrs:1563 each**
- **Air conditioners**
- **Oil Transfer system**
- **Emergency Pumps**
- **Onan Generator Hrs: 2230**
- **Village Marine Watermaker 200gpd**
- **Water filtration system**

Electrical

- **AC / DC Electrical system**
- **Onan generator 2230 hrs**
- **Battery parallel switch**
- **Telephone hook up system**

- **Battery Charger**
- **240V shore power**

Fishing

- **Rupp 28' outriggers**
- **Center rigger**
- **Bait freezer**
- **Rod holders**
- **Fresh and Salt water wash down**
- **Transom door**
- **Baitwell in cockpit sole**

Disclaimer

The Company offers the details of this vessel in good faith but cannot guarantee or warrant the accuracy of this information nor warrant the condition of the vessel. A buyer should instruct his agents, or his surveyors, to investigate such details as the buyer desires validated. This vessel is offered subject to prior sale, price change, or withdrawal without notice.

Exclusions

Owner's personal belongings.

Disclaimer

The Company offers the details of this vessel or yacht in good faith but cannot guarantee or warrant the accuracy of this information nor warrant the condition of the vessel. A buyer should instruct his representatives, agents, or his surveyors, to investigate such details as the buyer desires validated. This vessel or yacht is offered subject to prior sale, price change, or withdrawal without notice.

PHOTOS





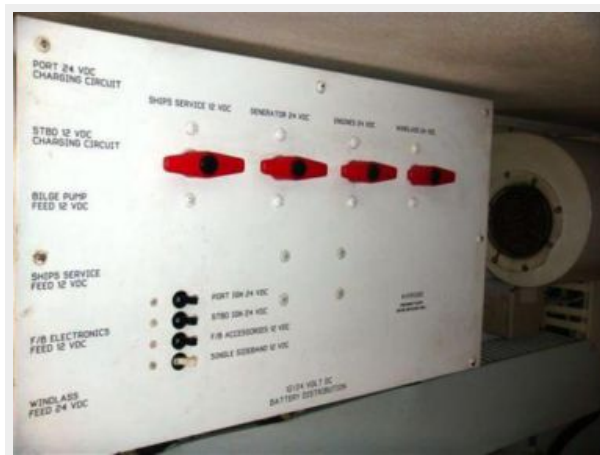












CONTACTS

Andrey Shestakov, leading yacht broker of the sales department of Shestakov Yacht Sales Inc. Shestakov Yacht Sales Inc., the official representative of the Miami/Fort Lauderdale FL headquarters.

Contact details

Email: andrey@shestakovyachtsales.com

Web: shestakovyachtsales.com/en/

Telephones

USA: +1(954)274-4435

Office hours

Monday – Saturday: **9:00 - 21:00** EDT

Sunday: **closed**

Address



Harbour Towne Marina, 850 NE 3rd St,
STE 213, Dania, FL 33004