

## ONCE AROUND — SUNSEEKER



**Builder:** SUNSEEKER

**Year Built:** 2014

**Model:** Motor Yacht

**Price:** PRICE ON APPLICATION

**Location:** United States

**LOA:** 68' 0" (20.73m)

**Beam:** 16' 9" (5.11m)

**Max Draft:** 5' 2" (1.57m)

**Cruise Speed:** 24 Kts. (28 MPH)

**Max Speed:** 33 Kts. (38 MPH)

Our experienced yacht broker, Andrey Shestakov, will help you choose and buy a yacht that best suits your needs **ONCE AROUND — SUNSEEKER** from our catalogue. Presently, at Shestakov Yacht Sales Inc., we have a wide variety of yachts available on our sale's list. We also work in close contact with all the big yacht manufacturers from all over the world.

If you would like to buy a yacht **ONCE AROUND — SUNSEEKER** or would like help answering any questions concerning purchasing, selling or chartering a yacht, please call **+1(954)274-4435**

---

# TABLE OF CONTENTS

---

TABLE OF CONTENTS	2
SPECIFICATIONS	3
Overview	3
Basic Information	3
Dimensions	3
Speed, Capacities and Weight	3
Accommodations	4
Hull and Deck Information	4
Engine Information	4
DETAILED INFORMATION	5
Cockpit	5
Fly Bridge	5
Accommodations	5
Galley	7
Main Helm Console	7
Deck Equipment	8
Mechanical	8
Electrical Equipment	8
Construction	9
Exclusions	9
Disclaimer	9
PHOTOS	10
CONTACTS	17
Contact details	17
Telephones	17
Office hours	17
Address	17

---

# SPECIFICATIONS

---

## Overview

---

This 68 Sport Yacht is a classic example of Sunseeker design with sleek lines, a sea kindly ride and amazing speeds.

The interior is stunning with satin finish Figured Anegre bulkheads and high gloss Wenge doors and cabinetry. Accommodations include 3 en suite staterooms plus crew aft. Add to that a state of the art entertainment system, high quality fabrics and plenty of natural light and you have a yacht that will be the envy of all.

The exterior areas are sure to impress with large sunpads, a large inviting fly bridge and many comfortable seating areas providing sun or shade, unencumbered views and an unforgettable cruise.

## Basic Information

---

**Category:** Motor Yacht

**Sub Category:** Flybridge

**Model Year:** 2014

**Year Built:** 2014

**Country:** United States

**Vessel Top:** Bimini Top

**Fly Bridge:** Yes

## Dimensions

---

**LOA:** 68' 0" (20.73m)

**LWL:** 53' 10" (16.41m)

**Beam:** 16' 9" (5.11m)

**Max Draft:** 5' 2" (1.57m)

## Speed, Capacities and Weight

---

**Cruise Speed:** 24 Kts. (28 MPH)

**Cruise Speed Range:** 300

**Max Speed:** 33 Kts. (38 MPH)

**Displacement:** 82209 Pounds

**Water Capacity:** 211 Gallons

**Fuel Capacity:** 925 Gallons

---

## Accommodations

---

**Total Cabins:** 3

**Total Heads:** 3

---

## Hull and Deck Information

---

**Hull Material:** Fiberglass

**Hull Configuration:** Deep Vee

---

## Engine Information

---

**Engines:** 2

**Manufacturer:** MTU

**Model:** 8V 2000 M94

**Engine Type:** Inboard

**Fuel Type:** Diesel

---

## DETAILED INFORMATION

---

### Cockpit

---

- Teak-laid cockpit decking
- Stern safety door
- Cockpit speakers with CD remote
- Waeco refrigerator
- Upholstered settee w/cockpit table
- Storage beneath settee
- Aft deck sun pad
- 24v Overhead cockpit lights
- 24v Low-level courtesy lights
- Engine room access hatch
- Fly bridge stairway

### Fly Bridge

---

- Bimini Top
- Teak deck
- U-settee w/custom teak table top
- Large sun pad
- Wet bar w/Victrifrigo icemaker, coolbox, and Kenyon BBQ
- Sportbridge Helm console
- 2 x Raymarine chartplotter, GPS and radar display
- Raymarine depth and speed display
- Raymarine Autopilot
- Raymarine VHF
- Xenta joystick control
- Jabsco searchlight

### Accommodations

---

#### Deck Salon

- Separate dining area with table
- Settee w/storage below
- 55" Samsung TV on hi/lo
- Harmon Kardon surround sound system
- AirPort Express
- Liquor cabinet

- U-line Wine Cooler
- 24v LED overhead lighting
- Stainless steel sliding door to cockpit
- Main control panel (AC/DC)
- Generator controls
- Air conditioning
- 3 x double AC sockets
- Wood flooring
- Choice of interior finishes and veneers
- Scatter cushions

### **Master Aft Stateroom**

- Centerline Queen berth w/storage below
- Cabinet and drawer storage
- Walk-in cedar lined closet
- 2 x 24v reading lights
- 2 x Nightstands
- 2 x large windows with opening portholes, screens and blinds
- Fitted carpet
- Settee
- 32" Samsung TV
- Harmon Kardon stereo
- En suite head w/shower

### **Forward Stateroom**

- Centerline queen berth w/storage below
- Drawer in base-end
- 2 x 24v reading lights
- Outboard shelving and cabinets
- Hanging locker w/mirrored panel
- 24v LED overhead lighting
- 2 x opening portholes w/screens
- Deck hatch with blind and screen
- Skylight
- Fitted carpet
- Air conditioning
- 32" Samsung TV
- Harmon Kardon stereo
- En Suite head and shower

### **Starboard Guest Cabin**

- 2 x Twin berths w/storage below

- 2 x 24v reading lights
- Hanging locker
- 24v LED overhead lighting
- Opening porthole w/screen and blinds
- Fitted carpet
- Air conditioning
- 22" Samsung TV
- Harmon Kardon stereo
- En Suite head and shower

### **Crew Quarters-Aft**

- Twin berths
- Hanging locker
- Splendide Washer/Dryer
- Head/shower

## **Galley**

---

- SS Sink and drainer-hot & cold water
- 3 burner Plastimo ceramic touch-control cooktop
- Bosch exhaust fan
- Vitrefrigo refrigerator and 2 drawer freezer
- Sharp Microwave convection oven
- Miele dishwasher
- Cabinet and drawer storage
- Granite countertop
- 8 place settings-china and flatware
- Wood flooring

## **Main Helm Console**

---

- Twin helm seats
- Navigation console with chart area
- MTU Xenta joystick (FB and Main console)
- Analog engine instrumentation
- 2 x Raymarine Displays Chart plotter, radar and Raystar 130 GPS
- Raymarine Radar open scanner
- Raymarine Autopilot
- Raymarine Speed and depth instrumentation
- Raymarine VHS
- Raymarine AIS
- Raymarine sounder and depth display

- Water and Fuel tank gauges
- Trim tab controls
- Dual trumpet Horn

---

## Deck Equipment

---

- Stainless steel bow roller with anchor stop
- Stainless steel bow plate
- 40 kg Lewmar delta anchor and 90m chain (galvanized)
- Lewmar winch and capstan with deck and Interior helm controls
- Chain locker with fender storage
- Fore Deck sun pad with folding back rest
- Fresh water deck wash outlet fore deck, swim platform, fly bridge
- Hydraulic Passerelle
- Teak laid swim platform, fore deck, side decks and aft deck
- Hand held swim shower
- Lewmar stern docking winches
- Sunbrella aft deck enclosure w/windows
- Garage for tender

---

## Mechanical

---

- Twin MTU 8V 2000 M94 @1270 hp each
- 23kw Onan generator
- Bow and Stern Thrusters
- Plumbing and wiring for watermaker
- Fuel filters/water separators to engines
- Fuel filters/water separators to generators
- Automatic bilge and flood pumps with high-level alarms
- Generator exhaust silencers and water separators
- Engine exhaust dry risers and water injection
- Power steering – hydraulic control steering
- Garage door and trim tabs hydraulic control unit
- Lifting platform hydraulic control unit
- FM 200 Engine room fire extinguishing system

---

## Electrical Equipment

---

- 23kW Onan generator with underwater silent exhaust and sound shield
- AC dockside connection
- Galvanic isolator



- 24v and 12v DC electrical system with full circuit breaker protection
- 8 x 24v engine batteries
- 4 x 24v domestic batteries
- 2 x 12v generator batteries
- Alternator split charging system
- Remote battery switches controlled from locker in cockpit
- 24v Battery charger
- 12v Battery charger
- Tropic Spec A/C
- Water heater
- AC electrical sockets throughout the boat
- 24v hand light and cable

---

## Construction

---

- Hand-laid GRP
- Gel coat including stripes
- Vinylester skin coat with powderbound mat
- Stitched multi-axial reinforced single-skin bottom
- Balsa-cored hull topsides
- PVC foam-cored deck and superstructure
- Hull stiffened with longitudinal stringers supported by transverse bulkheads and floors

---

## Exclusions

---

Owner's personal belongings.

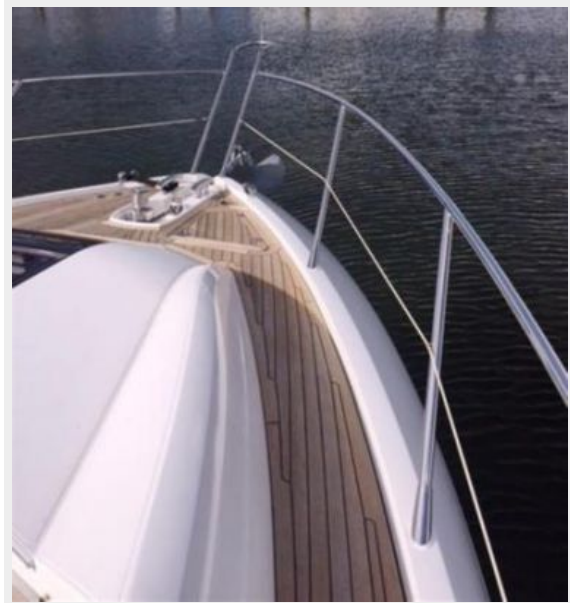
---

## Disclaimer

---

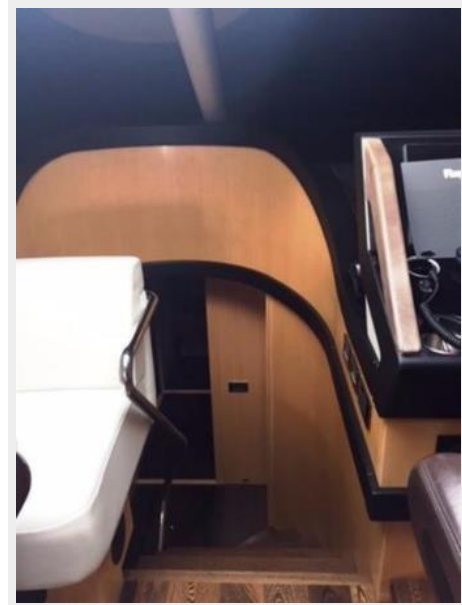
The Company offers the details of this vessel or yacht in good faith but cannot guarantee or warrant the accuracy of this information nor warrant the condition of the vessel. A buyer should instruct his representatives, agents, or his surveyors, to investigate such details as the buyer desires validated. This vessel or yacht is offered subject to prior sale, price change, or withdrawal without notice.

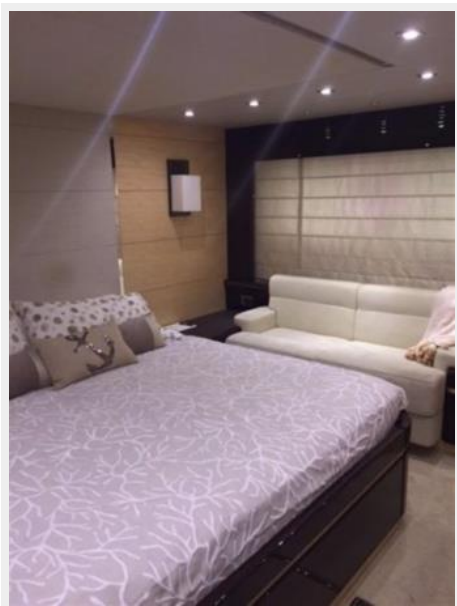
# PHOTOS

















# CONTACTS

---

Andrey Shestakov, leading yacht broker of the sales department of Shestakov Yacht Sales Inc. Shestakov Yacht Sales Inc., the official representative of the Miami/Fort Lauderdale FL headquarters.

## Contact details

---

Email: [andrey@shestakovyachtsales.com](mailto:andrey@shestakovyachtsales.com)

Web: [shestakovyachtsales.com/en/](http://shestakovyachtsales.com/en/)

## Telephones

---

USA: +1(954)274-4435

## Office hours

---

Monday – Saturday: **9:00 - 21:00** EDT

Sunday: **closed**

## Address

---



Harbour Towne Marina, 850 NE 3rd St,  
STE 213, Dania, FL 33004