

## "AWEIGH OUT" — VIKING



**Builder:** VIKING

**Year Built:** 2016

**Model:** cruiser

**Price:** \$1,649,000 USD

**Location:** United States

**LOA:** 53' 2" (16.21mm)

**Beam:** 17.5

**Max Draft:** 4' 11" (1.5mm)

Our experienced yacht broker, Andrey Shestakov, will help you choose and buy a yacht that best suits your needs "Aweigh Out" — VIKING from our catalogue. Presently, at Shestakov Yacht Sales Inc., we have a wide variety of yachts available on our sale's list. We also work in close contact with all the big yacht manufacturers from all over the world.

If you would like to buy a yacht "Aweigh Out" — VIKING or would like help answering any questions concerning purchasing, selling or chartering a yacht, please call +1(954)274-4435

# TABLE OF CONTENTS

TABLE OF CONTENTS	2
SPECIFICATIONS	4
Overview	4
Basic Information	11
Dimensions	11
Speed, Capacities and Weight	12
Accommodations	12
Hull and Deck Information	12
Engine Information	12
PHOTOS	13
Transom	13
Port Side Stern	13
Starboard Stern	13
Starboard Bow	13
Bow	13
Refrigerated Mezzanine Port & Stbd	13
Cockpit	14
Command Deck	14
Helm Station	14
Helm Station	14
Helm Station	14
Electronics	14
Companion Seating	15
U-Shaped Lounge Seating	15
Cabin Entry	15
Rod Storage	15
Galley	15
Galley	15

---

Under Counter Style Large Capacity Refrigerator/Freezer Drawers	16
Dinette	16
Dinette	16
Master Stateroom	16
Master Stateroom	17
Master Stateroom	17
Master Head	17
Master Head	17
Guest Stateroom	18
Guest Stateroom	18
Guest Head	18
Engine Room	18
Engine Room	19
Engine Room	19
Engine Room	19
CONTACTS	20
Contact details	20
Telephones	20
Office hours	20
Address	20

---

# SPECIFICATIONS

---

## Overview

---

### Salon / Galley / Dinette

- Air conditioning with reverse cycle heat with temperature control
- Booth lounge with storage underneath
- Central vacuum until connection with accessories
- Cocktail table, teak, high gloss finish, hi-lo
- Exhaust fan, high velocity
- Custom Amtico flooring
- Upgraded galley countertop, granite with stainless steel sink and satin nickel faucet
- Garbage disposal in sink
- Upgraded headliner
- Home theater system with 40" HD TV, Blu-Ray player, with surround sound with powered subwoofer
- Overhead lighting LED lights recessed in headliner and indirect decorative rope lighting behind valences, 24V DC
- Main electrical service panel, AC/DC, backlit for easier viewing
- Microwave/ convection oven located in upper galley cabinet
- Electric range surface mounted counter top
- Under counter style large capacity refrigerator & freezer
- Sliding salon door, contoured aluminum painted to match gelcoat with positive catch when opened and key locked
- Storage cabinets in upper galley, varnished teak doors
- Storage cabinets and drawers in lower galley, varnished teak doors and faces with stowage for utensils
- Teak cabinetry
- Water tank level gauge

### Custom Master Stateroom - Forward

- Must see extended master stateroom!
- Island double berth with lift-up top with gas pistons and maple-lined storage underneath mattress, "Handcraft", Viking Slumber #8
- Bedspread - quilted, designer style with pillow shams ( 2 )
- Drawer storage under bed, ( 2 ) large drawers
- ( 2 ) Hanging lockers, teak maple-lined
- Air conditioning with reverse cycle head with temperature control
- Hatch, Bomar, foredeck hatch with Ocean Air screen shade system
- Upholstered headboard
- Upgraded headliner
- Overhead LED lighting lights and decorative indirect rope lighting from underneath bed

platform

- Reading lights, overhead with separate switches
- Sheets (1 set), fitted cotton fabric
- Stereo speakers recessed, tied into 12V AM/FM/DVD
- Teak shelf
- 22" Flatscreen TV mounted on wall
- Carpet flooring
- Sitting area
- Extra storage
- Private custom ensuite larger head

## Guest Stateroom

- Air conditioning with reverse cycle heat with temperature control
- Upper and lower berths with upgraded mattress - "Handcraft", Viking Slumber #6
- Bedspread - quilted, designer style with ( 2 ) pillow shams
- Carpet flooring
- Maple-lined hanging locker
- Upgraded headliner
- Lighting overhead LED lights and courtesy rope lighting underneath lower bunk rail
- Sheets and pillows, (1 set), fitted cotton fabric
- Stereo speakers recessed in soffit tied into 12V AM/FM/DVD
- Storage drawer located under hanging locker
- 19" Flatscreen TV

## Master & Guest Heads

- Air conditioning/heat with vent in soffit
- Upgraded counter top in guest head, one-piece molded bone Corian with rounded edges and sink with Satin Nickel faucet
- Upgraded granite counter top, master head
- Electric heads with overboard and holding tank discharge
- Exhaust fan and vent in soffit
- Amtico vinyl flooring
- Overhead LED lights recessed in soffit and ceiling
- Lower vanity with teak face
- Medicine cabinet with mirrored doors
- 120V GFCI Receptacle
- Shower light
- Fiberglass stall shower with Satin Nickel shower fixtures and with drain to automatic sump pump in bilge
- Satin Nickel Towel bars and rings

## Cockpit

- Transom coaming with gate & fish box
- Refrigerated mezzanine port & stbd
- Plum transom as live well
- ( 3 ) Haunches each side
- Large fish boxes
- Rod holders
- Windlass
- 50amp Glendinning cablemaster
- Boarding box, fiberglass with nonskid, lift up top and storage
- Cable TV and telephone connections located in starboard dock cabinet and wired to a home run; RG6 TV Cable to accommodate satellite system, Phone cable is CAT-5 to accommodate current data phone systems
- Cabinet with storage for gaffs and or other accessories located under gunwale
- Straps with padding to keep transom door open
- Transom swim steps at transom door
- Walk-through transom door with lift gate
- Y-Valve for fresh and saltwater wash downs

## Command Deck

- Helm air conditioning
- Upgraded ultraleather helm chairs with chrome pedestals
- Refrigerator/ freezer box
- U-Shaped dinette
- Custom storage area
- Flatscreen TV
- Light tint on side windows
- Custom carpeting
- Release teak helm pod
- Electronic single lever controls
- Compass, large, flush mounted and lighted
- Controls: Top mounted electronic controls with station select and keypad
- Electronic trolling valves
- Fire system control with automatic and manual discharge and override system located at console
- Furuno RD-33 depth finder/ sea temperature gauge ICOM 604 radio
- Gauges/ electronic displays supplied by engine manufacture
- Handrail, powder coated aluminum effectively positioned
- Single chairs at port companion with starboard companion double seat, all with foot rests
- Instrumentation based on starboard engine package, lighted with switches in radio box
- Manual engine shutdown switches at cabinet in console

- Dockside electric connection - 50 amp/ 220V electric retractable Glendinning Cablemaster ( 1 ), located in starboard cabinet under forward gunwale and ( 1 ) 50 amp 220V inlet with push release door
- Dockside water connection with pressure reducing valve in port or starboard cabinet under forward gunwale
- Engine room access with door and ladder
- Engine room entrance with gas pistons
- Freshwater wash down with hose bib located in cabinet under forward gunwale
- Gaskets for all lids, doors and access doors
- Grabrails at cockpit haunch
- Indirect rope tri color (red, white, blue) lighting under coaming
- Laminated mounting plate in deck for future fighting chair or table
- Lazarette hatch with access to steering trim tabs, drain pumps
- Lighting, recessed tri color (red, white, blue) lights in flybridge overhang
- Livewell in transom box without window and light
- Molded nonskid deck
- Observation mezzanine, aft facing lounge seating with Sunbrella covered cushions, hinged seats with storage under
- Recessed in deck fish box, live well tub and dunnage box insulated and removable with pump out and drain plate with large holes for easy pump out and cleaning
- Rod holders, Rupp ( 4 ) flush mounted
- Rounded cockpit coaming for comfort
- Seawater wash down with pump in engine room and supply at cabinet under forward gunwale to keep deck clean while fishing
- Self bailing cockpit with large cockpit scuppers
- Stainless steel cleats and recessed hawse pipes
- Stainless steel gas pistons on all hatches and lids
- Stereo speakers powered from salon stereo with remote control
- Nonskid deck molded for traction and durability
- Offshore Systems monitoring with audible and visible alarms: fire, engine room temp, high bilge water, high exhaust temp, high coolant temp, low oil pressure, and generator as well as confirming correct system operation
- Power assist steering
- Recessed radio box, large on starboard sides of console with switch panel inside painted satin black
- Refrigerator with ice maker in port cabinet
- Stereo speakers, recessed
- Storage cabinets
- Trim tab control switch mounted at console
- Trumpet style air horns, ( 2 )
- U-Shaped lounge seating with vinyl covered foam cushion and teak table
- VHF Radio with antenna and mounts
- Windshield, molded fiberglass wrap around front and sides with fixed frameless laminated glass

- Windshield wipers with washer and speed adjustment
- Hard back with fiberglass
- LED Spreader lights
- Overhead lights at helm
- Overhead storage lockers integrated into top
- Radar pod
- Teaser reel prep
- Windshield wipers with washer and speed adjustment

## Electronics & Navigation

- Carbon fiber helm panel
- ( 3 ) 15" Flatscreens
- Garmin 12kw with 6' Array XHD
- Garmin Plotter with pre-loaded charts
- Garmin Sounder GSD Chirp
- Airmar 2-3 kw transducer
- 28KHZ - 60 KHZ / 130 KHZ 210 KHZ
- Wide Beam
- Furuno RD33
- Garmin GHP 12 Auto Pilot with shadow drive sensor
- ( 2 ) ICOM 604 VHF's
- Garmin AIS 600 Transponder
- JL Audio System
- Iridium SAT Voice & Data
- Panasonic ( 2 ) Lines cordless phone
- Garmin GXM52 Weather
- Engine Room Camera
- Flir MD-625 with JCV Thermal imager
- KVH Tracvision HD7 ( 2 ) Boxes
- Ghost Watch alarm system
- ( 2 ) Blue Lumishore Underwater lights
- Bow and stern thrusters

## Construction

- Ablative/copolymer anti-fouling bottom paint, 2 coat, primed
- Awlgrip brass thru hulls in engine room forward bilge
- Awlgrip engine room, lazarette, forward bilge and anchor locker for enhanced visibility and easier maintenance
- Blister resistant modified vinylester resin in entire hull skin
- Custom blended polyester resin used in structural laminates, topsides, bridges and hardtops
- Dupont high gloss polyurethane boot stripe
- Fiberglass side thru hulls



- High gloss teak interior finish throughout
- High performance isophthalic gelcoat npg superior gloss, flexibility and outstanding weathering characteristics
- Hull interior, isophthalic gelcoat top coated with a durable high gloss polyurethane coating
- Hull resin infused cored composite construction, using end-grain balsa and closed cell foam cores in selected areas for optimized strength and stiffness while minimizing weight
- Infused fiberglass fuel, water and holding tanks with fiberglass baffles inside and balsa coring on sides for stiffness, sealed to hull with resin foam
- Molded fiberglass command deck/ engine room ceiling with foam core for acoustical and thermal insulation
- Nonskid molded in for traction and durability
- Stringers, fiberglass encapsulated foam
- Vacuum bagged composite bulkheads - main engine room bulkhead, intermediate engine room bulkheads, and forward bulkhead

## Mechanical

- Air conditioning - direct expansion zoned with reverse cycle heat for complete climate control throughout the interior and with individual temperature controls for staterooms and salon
- A/C pressurized freshwater system with on deck freshwater fill and cockpit dockside supply inlet with pressure reducing valves
- Bilge pumps linked into monitoring system and connected to switches for automatic and manual operation
- Centralized seawater supply system with distribution manifold for seawater cooled systems and live wells
- DC power-assist hydraulic steering independent of engines
- Deck pump out fitting and direct overboard pump out for holding
- "Delta T" engine room ventilation system with supply and discharge fans for proper fresh air supply and water intrusion suppression
- Engine room entrance package consisting of gauges for digital tachometer, engine water temperature, engine oil pressure and engine room mounted engine start and stop switches for easier viewing and accessibility
- External sea strainers for main engine pick ups
- Fire suppression system, automatically or manually operated and tied into main engine and generator ignition systems with override
- Fresh water supply in engine room for general maintenance and cleaning
- Fuel and oil lines, flexible, steel reinforced USCG approved
- Fuel priming pumps electric 24V electric
- Fuel transfer system, 24V DC pump
- Hour meters on main engines and generator
- Internal sea strainers for generator and all other sea water pick ups
- Mufflers - engines, in-line type with surge tubes in engine room

- Mufflers - lift generators with gas water separator for cleaner, quieter operations
- Oil changing system, gear type pump for main engines, transmissions and generator with pump out line run to cockpit
- PEX plumbing, freshwater system plumbing with manifold system shut off in engine room and forward bilges
- Propellers - Class "S" pitch tolerance (ISO 484/2) and dynamic balancing. Advanced design cambered blade sections for optimum performance. Nibral alloy for maximum durability
- Racor fuel/water separator filters for main engines and generator clear bowl type, top loading for convenient replacing - includes vacuum gauge for fuel filter restriction - awlgrip white
- Rudders, stainless steel, with composite rudder bearing and drip-less thru-water and Tides Marine UHMW bearing for ease of maintenance
- Seacocks, bronze, ball-type sea valves and strainers for all thru-hulls below the water line - Awlgrip white
- Shafts - 2 Aquamet high-strength stainless steel, double-taper with machined keyway and thrust plate at main engine couplings
- Struts - thru-water, Nibral
- Trim tabs, dual piston with individual controls with the trim tab covers on transom
- Twin diesel engines with marine grade reduction gears.
- Water heated quick recovery, electric
- Y-valve emergency bilge pumps ( 2 )

## Electrical

- 24V DC ship's service throughout
- 12/24V Power supply with breakers on flybridge for future electronics
- 110V Outlet in engine room n aft bulkhead
- Anchor light/navigation lights
- Batteries, ( 2 ) independent 24V banks mounted in fiberglass storage box
- Battery chargers, ( 2 ) with thermal cutoff and switching system for complete integration
- Battery distribution panel with battery cutoff and charging system breakers
- Battery parallel system for main engines and generator start
- Bonded electrical system with ground plate
- Color-coded, labeled and numbered wiring system with corresponding drawings
- Dimmers 24V DC interior lighting throughout
- Engine room lights, DC with switch at engine room entrance
- 21.5kw Onan diesel generator E-QD Series, user friendly with electronic governing allowing voltage and electronic frequency control
- Glendinning cablemaster with ( 3 ) wire grounded cord, ( 1 ) Additional 50 amp/220V inlet with 50' cord
- Instrumental panel lights for flybridge and main electric panel
- Lighting, overhead LED lights recessed in ceiling and rope type decor lights, 24V throughout

- Master electrical control panel located in salon with 24V/120V circuit breakers, individual switching for shore 1, shore 2, or generator supply and gauges for electrical supply, voltmeter, ampmeter and frequency
- Receptacles, 120V duplex with GFI throughout
- RG6 TV cable to accommodate satellite system
- Voltage stabilizer isolation transformer on cable masters for more consistent, cleaner voltage

## Miscellaneous

- Anchor - constructed with a high-tensile, corrosion resistant aluminum magnesium alloy
- Anchor locker with access from foredeck
- Anchor rode, 300" with 12' chain
- Awlgrip bilge areas with access hatches, snow white and lighted using magnetic switches for easier maintenance and cleaning
- Bow rail, anodized aluminum, brushed finish
- ( 5 ) Fire extinguishers
- Magnetic switches for light in all forward bridge compartments
- Mooring lines, 3 strand, nylon ( 6 )
- Painted rub rail
- Ships bell
- Stainless steel bow, spring and stern cleats thru-bolted to aluminum backing plates
- Viking Prestige Decor package
- Zinc on transom

## Basic Information

---

**Category:** cruiser

**Sub Category:** Express

**Model Year:** 2016

**Year Built:** 2016

**Country:** United States

## Dimensions

---

**LOA:** 53' 2" (16.21mm)

**Beam:** 17.5

**Max Draft:** 4' 11" (1.5mm)

---

## Speed, Capacities and Weight

---

**Water Capacity:** 186 Gallons

**Holding Tank:** 57 Gal Gallons

**Fuel Capacity:** 1467 Gal Gallons

---

## Accommodations

---

**Total Cabins:** 2

---

## Hull and Deck Information

---

**Hull Material:** Fiberglass

---

## Engine Information

---

**Engines:** 2

**Manufacturer:** MAN

**Engine Type:** Inboard

**Fuel Type:** Diesel

# PHOTOS

**Port Side Stern**



**Transom**



**Starboard Stern**



**Starboard Bow**



**Bow**



**Refrigerated Mezzanine Port & Stbd**





**Cockpit**



**Command Deck**



**Helm Station**



**Helm Station**



**Helm Station**



**Electronics**



**Companion Seating**



**U-Shaped Lounge Seating**



**Rod Storage**



**Cabin Entry**



**Galley**



**Galley**





## Under Counter Style Large Capacity Refrigerator/Freezer Drawers



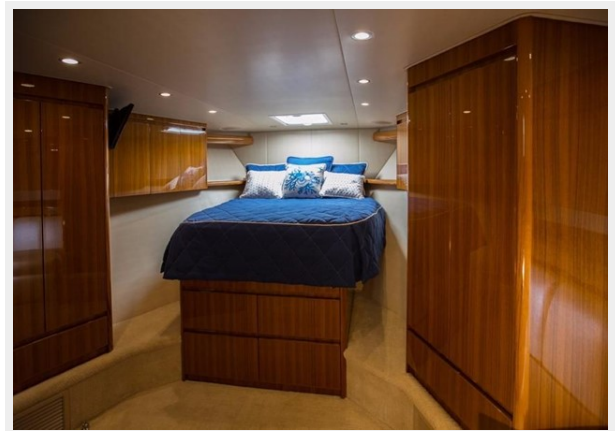
### Dinette



### Dinette



### Master Stateroom





**Master Stateroom**



**Master Stateroom**



**Master Head**



**Master Head**



**Guest Stateroom**



**Guest Stateroom**



**Guest Head**



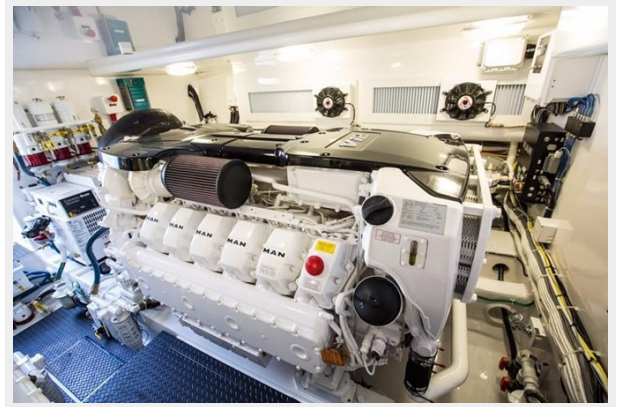
**Engine Room**



**Engine Room**



**Engine Room**



**Engine Room**



---

# CONTACTS

---

Andrey Shestakov, leading yacht broker of the sales department of Shestakov Yacht Sales Inc. Shestakov Yacht Sales Inc., the official representative of the Miami/Fort Lauderdale FL headquarters.

---

## Contact details

---

Email: **andrey@shestakovyachtsales.com**

Web: [shestakovyachtsales.com/en/](http://shestakovyachtsales.com/en/)

---

## Telephones

---

USA: +1(954)274-4435

---

## Office hours

---

Monday – Saturday: **9:00 - 21:00** EDT

Sunday: **closed**

---

## Address

---



Harbour Towne Marina, 850 NE 3rd St,  
STE 213, Dania, FL 33004