

"PRIMA DONNA" — VIKING



Судостроитель: VIKING

Год постройки: 2008

Модель: Крейсер

Цена: \$895,000 USD

Местонахождение: United States

Длина общая: 52' 10" (16.1mm)

Ширина: 17.25

Макс. осадка: 5' (1.52mm)

Купить "Prima Donna" — VIKING а также выбрать подходящую вам яхту из нашего каталога яхт вам поможет опытный яхтенный брокер Андрей Шестаков. На сегодняшний день компания Shestakov Yacht Sales Inc. имеет большое количество яхт в собственном списке продаж, а также тесно сотрудничает со всеми крупными яхтенными производителями по всему миру.

Для того чтобы купить яхту "Prima Donna" — VIKING а также проконсультироваться по любому вопросу связанному с покупкой, продажей, чартером яхт позвоните по телефону **+7(918)465-66-44**.

ОГЛАВЛЕНИЕ

ОГЛАВЛЕНИЕ	2
ХАРАКТЕРИСТИКИ	5
Обзор	5
Основная информация	10
Размеры	10
Скорость, вместимость и масса	11
Размещение	11
Корпус и палуба	11
Информация о двигателе	11
ФОТОГРАФИИ	12
Port Side Stern	12
Transom	12
Starboard Stern	12
Starboard Side	12
Port Bow	12
Windshield	12
Cockpit	13
Cockpit	13
Cockpit	13
Aft Cockpit Controls	13
Salon / Helm Station	13
Salon	13
Starboard Salon	14
Port Salon	14
Salon	14
Helm Station	14
Companion Seating	14
Helm Seating	14

Salon Refrigerator	15
Helm Station	15
Helm Station	15
Helm Station	15
Steps from Salon to Galley	16
Lower Galley	16
Steps to Galley	16
Steps to Galley	16
Galley	17
Galley	17
Galley	17
Master Stateroom Forward	17
Master Stateroom	18
Master Stateroom - Aft View	18
Master Head	18
Master Head	18
Master Stall Shower	19
Washer/ Dryer Unit - Companionway	19
VIP Stateroom - Midship Port	19
VIP Stateroom	19
Guest Head	20
Guest Stall Shower	20
Control Panel	20
Engine Room	20
Engine Room	20
Engine Room	20
Engine Room	21
КОНТАКТЫ	22
Контактная информация	22

Телефоны	22
Время работы	22
Адрес	22

ХАРАКТЕРИСТИКИ

Обзор

Vessel Walkthrough

Two stateroom, two head layout. Guest stateroom is on the port side with side-by-side twin beds and private access to guest head. The master stateroom is forward with a center-line queen size berth and private head. Galley down starboard, salon is on the helm deck, washer and dryer unit in companionway.

- Teak interior with satin finish
- Upgraded ultra-leather style sofa
- Custom wall covering throughout
- Custom headliner material throughout
- Premier edition decor
- Upgraded custom diamond teak doors

Galley

- Solid teak face steps to galley
- Custom 15" LCD TV
- Custom granite countertop, Giallatta
- Custom teak molding
- Custom genuine teak flooring
- (4) Burner glass cooktop, Kenyon lite-touch
- Microwave/ convection in upper cabinet
- Refrigerator/ freezer, under counter style
- Stainless steel sink
- Exhaust fan, high velocity
- Garbage disposal in sink
- Overhead halogen lights and fluorescent lighting
- Cabinets and drawers for additional storage
- Water tank level gauge and pump
- 110V Outlet

Master Stateroom - Forward

- Center-line queen berth with storage underneath, system #3 mattress upgrade
- (2) Large drawers under bed
- 20" Flatscreen LCD TV wall mounted
- Hanging lockers
- Dimmers for overhead low voltage AC lights
- Decorative indirect rope lighting from underneath bed platform
- Overhead reading lights with separate switches

- Glass mirror on back on master stateroom door
- Additional 110V outlet
- Additional telephone outlet
- Custom wall covering
- Private ensuite head with stall shower

VIP Stateroom - Midship

- Side-by-side twin berths, system #3 mattress upgrade
- 15" Flatscreen LCD TV wall mounted
- Stereo speakers recessed in soffit tied into salon stereo with volume control
- Hanging locker with storage draw below
- Overhead halogen lighting and courtesy rope lighting underneath lower bunk rail
- Glass mirror on back of stateroom door
- Private entry to guest head

Master & Guest Heads

- Vanity with teak face and mirrored medicine cabinet
- Custom genuine teak flooring
- Electric head with overboard and holding tank discharge
- Stall showers in both heads
- Shower light
- 120V Receptacle
- Towel bar and rings
- Overhead halogen recessed lighting
- Exhaust fan with vent soffit

Cockpit

- (2) Boarding box, fiberglass with non-skid lift up top and storage
- Cable TV and telephone
- Molded non-skid deck
- Freedom Lift for tender
- Swim platform and ladder
- Alwgrip lazarette
- Observation mezzanine, aft facing lounge seating with sunbrella covered cushions, hinged seat with storage under lounge
- Freezer storage in mezzanine seat
- Blue LED rope lighting under cockpit coaming
- Tackle cabinets starboard mezzanine with pullout drawers, large bait freezer and storage area top loading port of mezzanine
- Cockpit controls concealed in tackle center on pull out drawer, including bow thruster controls

- Custom cockpit overhead lighting, blue and white
- Custom (4) cockpit step lights
- Ladder and hatch access to top of flybridge above stbd storage lockers
- In-deck fish boxes, insulated
- Cabinet with storage for gafts and or other accessories located under port forward gunwale
- Dockside electrical connection 50AMP / 220V electric retractable glendinning cablemaster in starboard cabinet under forward gunwale
- Dockside water connection with pressure reducing valve
- Engine room access with door and ladder
- Refrigerated cockpit step box
- Transom coaming with gate and transom fish box
- Fresh water washdown with hose bib located in cabinet under forward gunwale
- Hawse pipes
- Indirect rope lighting under coaming
- Laminated mounting plate in-deck for future fighting chair or table
- (4) Stainless steel rod holders and flush-mounted
- Sea water washdown
- Self bailing cockpit with large cockpit scuppers
- Stainless steel gas spring on all hatches and lids
- Stereo speakers powered from salon stereo with volume control
- Walk through transom door with lift gate

Salon / Enclosed Helm Deck

- (4) Sided hard fiberglass enclosure with fixed, tempered windows
- Upgraded Bose entertainment system
- Overhead teak handrail
- Electronic controls
- Upgraded helm air conditioning
- Single radar mast
- Additional telephone outlet
- Powder coat air horns
- Starboard side cabinet with refrigerator and ice maker with additional storage
- 18" x 18" Hatch over helm chair
- Single stidd helm chair
- Custom second stidd companion chair
- Teak wall panel interior, teak valances, teak wire chase, teak aft bulkhead
- Black dash and black window stanchions
- Powder coated black hand rails on helm
- Custom genuine teak flooring
- Teak hi-low cocktail table
- Custom helm rope lighting
- Custom larger helm steering wheel
- Custom helm cover with cut outs for helm AC vents

- Grab rails mounted on side at deck house, under hardtop for access to bow
- Recessed electronic boxes in console for custom electronics package that is easily viewable

Electronics & Navigation

CUSTOM AME ELECTRONICS PACKAGE

- Furuno Navnet 3D 25kw Radar
- Furuno 6' Open Array
- Furuno NavNet 3D 24" Radome 4Kw 36NM Radar
- (2) Furuno NavNet 3D Black Box, Multi-function display processor with keypad
- (3) KEP 15" Color LED Monitor
- Furuno 1kw NavNet Video Sounder Module
- Furuno 1kw 50/200 KHZ Transducer
- Furuno Sirius Weather for NavNet System
- Airmar Weather Sensor with GPS Current Wind, Air Temp, Humidity, Barometric Pressure
- Furuno AIS Receiver
- Furuno Digital Depth Display
- Furuno Auto Pilot System
- (2) ICOM VHF Radios, Black
- Engine Room Camera System - Elbex 4MM Color Ball Camera
- KVH 14" HDTV SAT TV System with Control Box
- Sirius SAT Radio Tuner
- Tellular Cell Phone Transceiver GSM
- Panasonic (2) Line Cordless Phone System
- Panasonic Additional (2) Line Cordless Hand Set
- Thermal Camera with B&W Low Light
- ACR 24VDC Spotlight
- ACR CAT 1 Epirb
- Paradox Platinum Plus Package, Complete Monitoring System
- Winslow (6) person life raft with cradle & hydrostatic release double insulated heat sealed floor

Deck

- Bow pulpit
- Burgee staff on bow rail
- Kiddie rail on side of house below windows
- Sliding track to track under rub-rail for fenders
- Custom line-chain combination 300' of rope and 15' chain
- Split anchor locker
- Recessed trim tab covers
- Lewmar V4 stainless steel windlass
- Spare anchor with 300' of line

- Custom 48" long haunch hand rails

Hull

- Additional fuel tank forward, for a total of (3) tanks
- Snow White hull color with Viking Black boot stripe
- Oval exhaust outlets
- Fiberglass side thru-hulls
- DC Bow thruster

Bilge

- Clean out bilge pump with intake hose
- Awlgrip forward bilge and anchor locker
- Awlgrip anchor locker
- Magnetic switches for all bilge lights

Mechanical

- Air conditioning with reverse cycle heat, complete climate control throughout interior
- A/C Pressurized fresh water system with on deck fresh water filled and cockpit dockside supply inlet with pressure reducing valve
- Bilge pumps with additional clean out pumps in keel area linked into monitoring system and connected to float switches for automatic and manual operation
- "Delta T" engine room ventilation system with supply and water intrusion suppression
- Engine room entrance package consisting of gauges for digital tachometer, engine water temperature, and engine oil pressure and engine room mounted engine start and stop switches for easier viewing and accessibility
- External sea strainers for main engine pick-ups
- Fire suppression system, automatically or manually operated and tied into main engine and generator ignition system with override
- Fresh water supply in engine room for general maintenance and cleaning
- Fresh water manifold isolation system
- Fuel and oil lines, flexible, steel reinforced USCG approved aircraft type
- Fuel priming pumps, 24V DC
- Fuel transfer system, 24V DC pump
- Internal sea strainers for generator, air conditioning and all other sea water pick-ups
- Pex plumbing, fresh water system plumbing
- Power assist hydraulic steering
- Propellers, nibral
- Racor fuel/ water separator filters for main engines and generator, glass ow type, top-loading for convenient replacing
- Rudders, stainless steel with driplless thruwater and tides marine UHMW bearing for ease of maintenance
- Seacocks, bronze, ball type sea valves and strainers for all thru hulls below the waterline

- Shafts - (2) Aquamet high-strength stainless steel, double-taper with machined keyway and cushion thrust plate at main engine couplings
- Structural steel engine beds
- Trim tabs, dual piston with individual controls
- Y-Valve emergency bilge pumps (2)

Electrical

- 24V DC Ships service throughout
- 110V Outlet in engine room on aft bulkhead
- Anchor light/ navigation lights
- (2) Battery chargers
- Battery distribution panel with battery cutoff and charging system breakers
- Battery parallel system for main engines and generator start
- Engine room lights, AC and DC with switch at engine room entrance
- 21.5kw Onan generator, diesel
- Glendinning cabledmaster
- Lighting, overhead halogen lights recessed in ceiling and rope type decor lights concealed by upholstered valences, 24V and 120V throughout
- Voltage stabilizer isolation transformers for more consistent cleaner voltage electrical system with ground plate

Основная информация

Тип судна: Крейсер

Подкатегория: Express

Модельный год: 2008

Год постройки: 2008

Страна: United States

Размеры

Длина общая: 52' 10" (16.1mm)

Ширина: 17.25

Макс. осадка: 5' (1.52mm)

Скорость, вместимость и масса

Вместимость воды: 200 Gallons

Вместимость сточного бака: 50 Gal
Gallons

Объем топливного бака: 1200 Gal
Gallons

Размещение

Всего кают: 2

Корпус и палуба

Материал корпуса: Fiberglass

Информация о двигателе

Двигатели: 2

Производитель: MAN

Тип двигателя: Inboard

Тип топлива: Diesel

ФОТОГРАФИИ

Port Side Stern



Transom



Starboard Stern



Starboard Side



Port Bow



Windshield



Cockpit



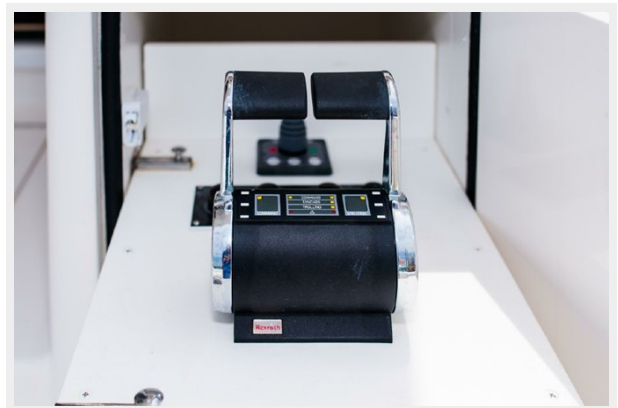
Cockpit



Cockpit



Aft Cockpit Controls



Salon / Helm Station



Salon



Starboard Salon



Port Salon



Salon



Helm Station



Companion Seating



Helm Seating



Salon Refrigerator



Helm Station



Helm Station



Helm Station



Lower Galley



Steps from Salon to Galley



Steps to Galley



Steps to Galley



Galley



Galley



Galley



Master Stateroom Forward



Master Stateroom



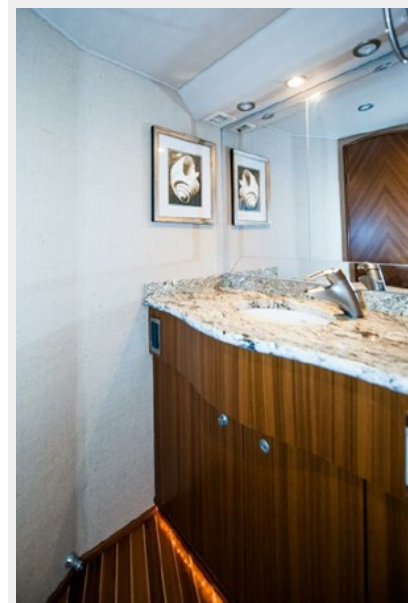
Master Stateroom - Aft View



Master Head



Master Head



Master Stall Shower



Washer/ Dryer Unit - Companionway



VIP Stateroom - Midship Port



VIP Stateroom



Guest Head



Guest Stall Shower



Control Panel



Engine Room



Engine Room



Engine Room



Engine Room



КОНТАКТЫ

Андрей Шестаков (Andrey Shestakov) – ведущий яхтенный брокер отдела продаж яхт и судов компании Shestakov Yacht Sales Inc. Официальный представитель Shestakov Yacht Sales Inc. для русскоговорящих клиентов в центральном офисе компании в Майами/Форт Лодердейл/Флорида/США.

Контактная информация

Email: andrey@shestakovyachtsales.com

Web: shestakovyachtsales.com

Телефоны

Краснодарский край: **+7(918)465-66-44**

США, Майами, Флорида: **+1(954)274-4435**

Время работы

Понедельник – Суббота: **9:00 - 21:00**
EDT

Воскресенье: **Закрето**

Адрес



Harbour Towne Marina, 850 NE 3rd St,
STE 213, Dania, FL 33004