

"MONTRACHET" — VIKING



Builder: VIKING

Year Built: 2015

Model: cruiser

Price: \$969,000 USD

Location: United States

LOA: 42' 7" (12.98mm)

Beam: 15.83

Max Draft: 3' 5" (1.04mm)

Our experienced yacht broker, Andrey Shestakov, will help you choose and buy a yacht that best suits your needs "Montrachet" — VIKING from our catalogue. Presently, at Shestakov Yacht Sales Inc., we have a wide variety of yachts available on our sale's list. We also work in close contact with all the big yacht manufacturers from all over the world.

If you would like to buy a yacht "Montrachet" — VIKING or would like help answering any questions concerning purchasing, selling or chartering a yacht, please call +1(954)274-4435

TABLE OF CONTENTS

| | |
|------------------------------|----|
| TABLE OF CONTENTS | 2 |
| SPECIFICATIONS | 4 |
| Overview | 4 |
| Basic Information | 7 |
| Dimensions | 8 |
| Speed, Capacities and Weight | 8 |
| Accommodations | 8 |
| Hull and Deck Information | 8 |
| Engine Information | 8 |
| PHOTOS | 9 |
| Transom | 9 |
| Starboard Side | 9 |
| Port Bow | 9 |
| Starboard Bow | 9 |
| Cockpit | 9 |
| Cockpit | 9 |
| Helm Station | 10 |
| Helm Station | 10 |
| Helm Station | 10 |
| Helm Station | 10 |
| Rod Storage | 10 |
| Rod Storage | 10 |
| Tower Station | 11 |
| Cabin Entry | 11 |
| Dinette | 11 |
| Salon | 11 |
| Galley | 11 |
| Master Stateroom | 11 |

| | |
|-----------------------------|-----------|
| Guest Stateroom | 12 |
| Master Stateroom - Aft View | 12 |
| Guest Stateroom - Aft View | 12 |
| Head with Stall Shower | 12 |
| Engine Compartment | 12 |
| Engines | 12 |
| CONTACTS | 13 |
| Contact details | 13 |
| Telephones | 13 |
| Office hours | 13 |
| Address | 13 |

SPECIFICATIONS

Overview

Salon

- Air conditioning with reverse cycle heat with temperature control
- Amtico vinyl flooring
- Overhead recessed lighting in headliner
- Sliding door to command deck
- Stereo speakers
- Stereo system (12V) with 28" HD flat screen TV
- Table, high-low with high gloss finish
- U-Shaped lounge with storage below
- Brushed Nickel hardware throughout

Galley

- High polished corian counter top
- Central vacuum unit connection with accessories
- Countertop, corian
- Electric (2) burner surface mount stove
- Exhaust fan
- Amtico vinyl flooring
- Microwave/ convection oven
- Refrigerator/ freezer, large capacity, side by side doors
- Storage cabinets in upper galley
- Storage cabinets and drawers in lower galley
- Water tank level gauge

Master Stateroom - Forward

- Air conditioning with reverse cycle heat
- Queen size walk-around berth
- Drawer storage under bed
- Hanging locker
- Lighting, overhead and decorative indirect
- Reading lights, overhead
- TV, 19" HD flatscreen

Guest Stateroom - Aft

- Air conditioning with reverse cycle heat
- Hanging locker
- Overhead lighting

- Side-by-side bunks
- Stereo speakers

Head

- Air conditioning/ head with vent in soffit
- Amtico vinyl floor
- Exhaust fan with vent in soffit
- Recessed in soffit and in ceiling lights
- Linen storage
- Medicine cabinet with mirrored doors
- Sealand with overboard and holding tank discharge
- Stall shower

Cockpit

- Recessed dockside boxes with fiberglass doors and gaff storage
- Mezzanine cushions in ultraleather
- Freezer & refrigerated drink box
- Cable TV and telephone connections
- Dockside electrical connection - 50amp/220V
- Dockside water connection
- Engine room through hydraulically actuated mezzanine
- Freshwater wash down
- Indirect rope lighting under coaming
- Live well in transom box
- Molded-in insulated fish boxes, port and starboard
- Custom teak cockpit
- Observation mezzanine
- (6) Rod holders
- Rounded cockpit coaming for comfort
- Seawater wash down
- Self bailing cockpit with large cockpit scuppers
- Transom swim steps at transom door
- Walk-through transom door with lift gate

Helm Deck

- Electronic single lever controls for helm pod
- Helm air conditioning
- Teak finish helm pod
- Teak helm chair upgrade with stainless steel pedestal
- Upgraded fabric on command deck cushions to sunbrella
- Helm chair and companion seats in ultraleather

- Top mounted single lever electronic controls

- Center console helm full walk around
- Engine room access hatch with ladder to engine room
- Fire system control
- Insulated soda box with lid located in starboard aft cabinet
- Lighted compass
- Offshore systems monitor
- Port and starboard bench seating
- Stereo speakers, tied into stereo system
- Windshield, molded fiberglass wrap around front and sides with fixed frameless laminated glass
- Windshield wiper/washer
- Dual rod lockers molded into hardtop

Electronics & Navigation

- Garmin GPS/ Plotter preloaded with coastal charts
- Garmin GMR 1204XHD 12kw Radar with 4' Array
- Garmin Remote input device
- Garmin GNT 10 N2K Transceiver
- Garmin GMS10 Network Expander
- Garmin GXM52 Weather Antenna
- Garmin GSD-26 Chirp Video Sounder Module
- Airmar B265LH 1kw Chirp Transducer
- Furuno RD33 Data Organizer & Display
- (2) Icom IC-504 01 Black VHF Radio
- Shakespeare 5018 17.5' VHF antenna
- Gost PM-Mini IR Ball camera
- Flir MD-625 Fixed camera system controlled by Garmin MFD
- KVH M3ST SATTV System
- Tower - Icom HM-162 B Black VHF Command Mic
- Lumishore Underwater lights

Deck & Exterior

- Bow pulpit
- Lewmar V2 Stainless steel windlass

Palm Beach Tower

- Custom tuna tower package
- Rupp riggers
- EZ2CY Enclosure
- Tri-Color LED lights
- Tower sunshade
- Rupp center rigger

- Teaser reel door

Mechanical

- Aft facing dual propeller pods with stainless steel propellers
- Air conditioning
- Bilge pumps
- D/C pressurized freshwater system
- Dockside and overboard pump out for holding tank
- Freshwater supply in engine room for general maintenance and cleaning
- Fuel priming pumps
- Hydraulic actuated steering
- Integrated trim tabs with auto trim control
- Internal sea strainers for main engine pick ups
- Joystick control for low speed maneuvering and docking
- Racor fuel water separators for main engines and generator
- Smart craft vessel view displays
- Trolling valves
- Water heater quick recovery

Electrical

- 24V DC ship's service
- 110V Outlet in engine room
- (2) Battery chargers
- Battery parallel system for main engines and generator start
- Engine room lights
- 12kw Diesel generator
- Lighting, overhead recessed in ceiling
- Master electrical control panel located in salon
- Phone cable
- Voltage stabilized isolation transformer

Basic Information

Category: cruiser

Sub Category: Open Yacht

Model Year: 2015

Year Built: 2015

Country: United States

Dimensions

LOA: 42' 7" (12.98mm)

Beam: 15.83

Max Draft: 3' 5" (1.04mm)

Speed, Capacities and Weight

Water Capacity: 120 Gallons

Holding Tank: 39 Gal Gallons

Fuel Capacity: 525 Gal Gallons

Accommodations

Total Cabins: 2

Hull and Deck Information

Hull Material: Fiberglass

Engine Information

Engines: 2

Manufacturer: Cummins

Fuel Type: Diesel

PHOTOS

Transom



Starboard Side



Starboard Bow



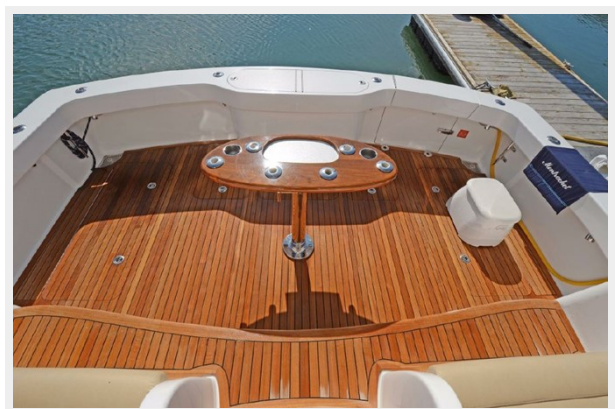
Port Bow



Cockpit



Cockpit



Helm Station



Helm Station



Helm Station



Helm Station



Rod Storage



Rod Storage



Tower Station



Cabin Entry



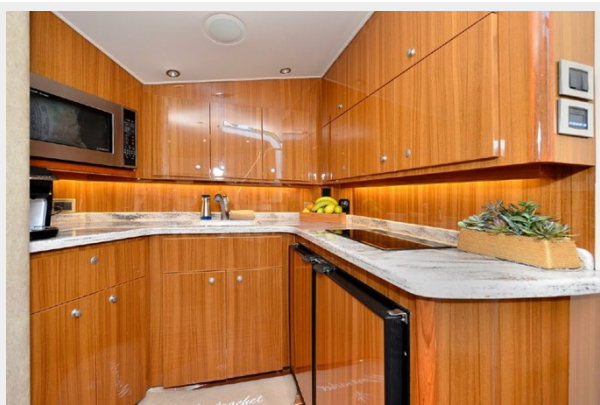
Dinette



Salon



Galley



Master Stateroom



Master Stateroom - Aft View



Guest Stateroom



Guest Stateroom - Aft View



Head with Stall Shower



Engine Compartment



Engines



CONTACTS

Andrey Shestakov, leading yacht broker of the sales department of Shestakov Yacht Sales Inc. Shestakov Yacht Sales Inc., the official representative of the Miami/Fort Lauderdale FL headquarters.

Contact details

Email: andrey@shestakovyachtsales.com

Web: shestakovyachtsales.com/en/

Telephones

USA: +1(954)274-4435

Office hours

Monday – Saturday: **9:00 - 21:00** EDT

Sunday: **closed**

Address



Harbour Towne Marina, 850 NE 3rd St,
STE 213, Dania, FL 33004