

# JOHNSON 83' SKYLOUNGE W/HYDRAULIC I — JOHNSON



**Builder:** JOHNSON

**Year Built:** 2025

**Model:** Sky Lounge

**Price:** \$6,370,000 USD

**Location:** Taiwan

**LOA:** 83' (25.3mm)

**Beam:** 20.75

**Min Draft:** 6' (1.83mm)

**Max Draft:** 6' 1" (1.85mm)

**Max Speed:** 25 Knots Kts. (29 MPH)

Our experienced yacht broker, Andrey Shestakov, will help you choose and buy a yacht that best suits your needs **JOHNSON 83' SKYLOUNGE W/HYDRAULIC PLATFORM — JOHNSON** from our catalogue. Presently, at Shestakov Yacht Sales Inc., we have a wide variety of yachts available on our sale's list. We also work in close contact with all the big yacht manufacturers from all over the world.

If you would like to buy a yacht **JOHNSON 83' SKYLOUNGE W/HYDRAULIC PLATFORM — JOHNSON** or would like help answering any questions concerning purchasing, selling or chartering a yacht, please call **+1(954)274-4435**

# TABLE OF CONTENTS

TABLE OF CONTENTS	2
SPECIFICATIONS	4
Basic Information	4
Dimensions	4
Speed, Capacities and Weight	4
Accommodations	4
Hull and Deck Information	5
Engine Information	5
PHOTOS	6
Salon Looking Aft	6
Aft Galley Option	6
Forward Dining Option	6
Master Stateroom	6
Master Stateroom	6
Port Side Midship Cabin	6
Starboard Midship Cabin	7
Companion Foyer	7
Skylounge	7
Aft Deck	7
At Sea	7
Aft Deck	7
At Sea	8
Night Shot	8
Engine Room	8
CONTACTS	9
Contact details	9
Telephones	9
Office hours	9

---

Address

9

---

# SPECIFICATIONS

---

## Basic Information

---

**Category:** Sky Lounge

**Sub Category:** Sky Lounge

**Model Year:** 2025

**Year Built:** 2025

**Country:** Taiwan

## Dimensions

---

**LOA:** 83' (25.3mm)

**LWL:** 65' 3" (19.89mm)

**Beam:** 20.75

**Min Draft:** 6' (1.83mm)

**Max Draft:** 6' 1" (1.85mm)

## Speed, Capacities and Weight

---

**Max Speed:** 25 Knots Kts. (29 MPH)

**Gross Tonnage:** 63 Pounds

**Water Capacity:** 350 Gallons

**Holding Tank:** 100 Gal Gallons

**Fuel Capacity:** 1600 Gal Gallons

## Accommodations

---

**Total Cabins:** 4

**Sleeps:** 8

**Total Heads:** 5

**Crew Berths:** 2

---

## Hull and Deck Information

---

**Hull Material:** Fiberglass

**Deck Material:** Teak

**Hull Configuration:** Semi-Displacement

**Hull Designer:** Dixon Yacht Design

**Exterior Designer:** Dixon Yacht Design

**Interior Designer:** Johnson Yachts

---

## Engine Information

---

**Engines:** 2

**Manufacturer:** MAN

**Engine Type:** Inboard

**Fuel Type:** Diesel

# PHOTOS

**Salon Looking Aft**



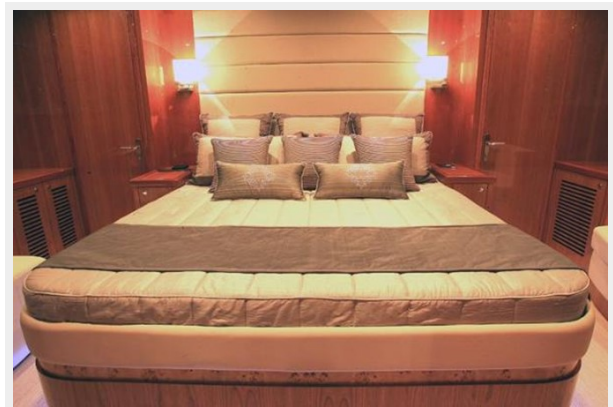
**Aft Galley Option**



**Forward Dining Option**



**Master Stateroom**



**Master Stateroom**



**Port Side Midship Cabin**



**Starboard Midship Cabin**



**Companion Foyer**



**Skylounge**



**Aft Deck**



**Aft Deck**



**At Sea**



**At Sea**



**Night Shot**



**Engine Room**





# CONTACTS

---

Andrey Shestakov, leading yacht broker of the sales department of Shestakov Yacht Sales Inc. Shestakov Yacht Sales Inc., the official representative of the Miami/Fort Lauderdale FL headquarters.

## Contact details

---

Email: [andrey@shestakovyachtsales.com](mailto:andrey@shestakovyachtsales.com)

Web: [shestakovyachtsales.com/en/](http://shestakovyachtsales.com/en/)

## Telephones

---

USA: +1(954)274-4435

## Office hours

---

Monday – Saturday: **9:00 - 21:00** EDT

Sunday: **closed**

## Address

---



Harbour Towne Marina, 850 NE 3rd St,  
STE 213, Dania, FL 33004