

JOHNSON 83' FLYBRIDGE W/HYDRAULIC PLATFORM — JOHNSON



Builder: JOHNSON

Year Built: 2025

Model: Flybridge

Price: \$6,250,000 USD

Location: Taiwan

LOA: 83' (25.3mm)

Beam: 20.75

Min Draft: 6' (1.83mm)

Max Draft: 6' 1" (1.85mm)

Cruise Speed: 21 Knots Kts. (24 MPH)

Max Speed: 25 Knots Kts. (29 MPH)

Our experienced yacht broker, Andrey Shestakov, will help you choose and buy a yacht that best suits your needs **JOHNSON 83' FLYBRIDGE w/HYDRAULIC PLATFORM — JOHNSON** from our catalogue. Presently, at **Shestakov Yacht Sales Inc.**, we have a wide variety of yachts available on our sale's list. We also work in close contact with all the big yacht manufacturers from all over the world.

If you would like to buy a yacht **JOHNSON 83' FLYBRIDGE w/HYDRAULIC PLATFORM — JOHNSON** or would like help answering any questions concerning purchasing, selling or chartering a yacht, please call **+1(954)274-4435**

TABLE OF CONTENTS

TABLE OF CONTENTS	2
SPECIFICATIONS	4
Basic Information	4
Dimensions	4
Speed, Capacities and Weight	4
Accommodations	4
Hull and Deck Information	5
Engine Information	5
PHOTOS	6
Salon Looking Aft	6
Aft Galley Option	6
Forward Dining Option	6
Master Stateroom	6
Master Stateroom	6
Port Side Midship Cabin	6
Starboard Midship Cabin	7
Companionway Foyer	7
Skylounge	7
Aft Deck	7
Aft Deck	7
Night Shot	7
At Sea	8
At Sea	8
At Sea	8
Engine Room	8
CONTACTS	9
Contact details	9
Telephones	9

Office hours

9

Address

9

SPECIFICATIONS

Basic Information

Category: Flybridge

Sub Category: Flybridge

Model Year: 2025

Year Built: 2025

Country: Taiwan

Dimensions

LOA: 83' (25.3mm)

LWL: 65' 3" (19.89mm)

Beam: 20.75

Min Draft: 6' (1.83mm)

Max Draft: 6' 1" (1.85mm)

Speed, Capacities and Weight

Cruise Speed: 21 Knots Kts. (24 MPH)

Max Speed: 25 Knots Kts. (29 MPH)

Gross Tonnage: 63 Pounds

Water Capacity: 350 Gallons

Holding Tank: 100 Gal Gallons

Fuel Capacity: 1600 Gal Gallons

Accommodations

Total Cabins: 4

Sleeps: 8

Total Heads: 5

Crew Cabin: 2

Crew Berths: 2

Crew Heads: 1

Hull and Deck Information

Hull Material: Teak

Deck Material: Teak

Hull Configuration: Semi-Displacement

Hull Designer: Dixon Yacht Design

Exterior Designer: Dixon Yacht Design

Interior Designer: Johnson Yachts

Engine Information

Engines: 2

Manufacturer: MAN

Engine Type: Inboard

Fuel Type: Diesel

PHOTOS

Salon Looking Aft



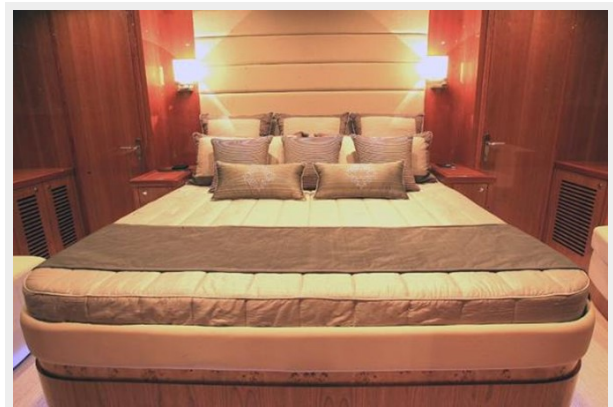
Aft Galley Option



Forward Dining Option



Master Stateroom



Master Stateroom



Port Side Midship Cabin



Starboard Midship Cabin



Companionway Foyer



Skylounge



Aft Deck



Aft Deck



Night Shot



At Sea



At Sea



At Sea



Engine Room



CONTACTS

Andrey Shestakov, leading yacht broker of the sales department of Shestakov Yacht Sales Inc. Shestakov Yacht Sales Inc., the official representative of the Miami/Fort Lauderdale FL headquarters.

Contact details

Email: andrey@shestakovyachtsales.com

Web: shestakovyachtsales.com/en/

Telephones

USA: +1(954)274-4435

Office hours

Monday – Saturday: **9:00 - 21:00** EDT

Sunday: **closed**

Address



Harbour Towne Marina, 850 NE 3rd St,
STE 213, Dania, FL 33004