

92' HATTERAS — HATTERAS



Builder: HATTERAS

Year Built: 2000

Model: Motor Yacht

Price: PRICE ON APPLICATION

Location: United States

LOA: 92' 10" (28.30m)

Beam: 22' 6" (6.86m)

Max Draft: 6' 6" (1.98m)

Cruise Speed: 18 Kts. (21 MPH)

Max Speed: 23 Kts. (26 MPH)

Our experienced yacht broker, Andrey Shestakov, will help you choose and buy a yacht that best suits your needs 92' Hatteras — HATTERAS from our catalogue. Presently, at Shestakov Yacht Sales Inc., we have a wide variety of yachts available on our sale's list. We also work in close contact with all the big yacht manufacturers from all over the world.

If you would like to buy a yacht 92' Hatteras — HATTERAS or would like help answering any questions concerning purchasing, selling or chartering a yacht, please call +1(954)274-4435

TABLE OF CONTENTS

TABLE OF CONTENTS	2
SPECIFICATIONS	3
Overview	3
Basic Information	4
Dimensions	4
Speed, Capacities and Weight	4
Accommodations	4
Hull and Deck Information	4
Engine Information	5
PHOTOS	6
CONTACTS	14
Contact details	14
Telephones	14
Office hours	14
Address	14

SPECIFICATIONS

Overview

92' Hatteras 2000 *View Virtual Tour*****

5 Guest Cabins

Furuno Electronics

Max Speed 23 Knots

MTU Engines

ONAM Generators

The Hatteras 92 has a raised pilot house.

Motor Yacht features a deckhouse layout that has been designed with four general areas. The galley is fully-equipped with two Sub-Zero refrigerator / freezers with icemakers, a four-burner cooktop, a standard convection oven, as well as a combination microwave / convection oven. Other galley amenities include a garbage disposal, dishwasher, trash compactor, and generous counter and storage space.

The pilothouse is raised four feet, three inches above the galley floor to accommodate the stairway leading below and to enhance the captain's visibility. Here, the standard arrangement features an L-shaped lounge with table, desk / chart table, and steps leading to the flybridge. Standard placements in the salon include a day head at the forward end of the salon, a complete entertainment center, as well as a door leading to the aft deck. Access to the cockpit or sport deck is gained by either a single or dual port and starboard stairways.

The sport deck is over three-and-a-half feet long, roomy enough to use as an additional sundeck and as an extra-large swim platform.

Both the master and guest accommodations can be found amidships. The cabin includes a king-size bed, port and starboard walk-in closets, and a double arrangement head compartment with whirlpool tub. Aft of the foyer, port and starboard doors direct guests to two separate staterooms. Both staterooms feature an innovative sliding twin berth design with a movable nightstand which can be arranged as either separate twins or a single queen-size berth. The port stateroom is designed with a stall shower, while a large tub has been designed into the starboard guest head.

Basic Information

Category: Motor Yacht

Model Year: 2000

Year Built: 2000

Country: United States

Fly Bridge: Yes

Dimensions

LOA: 92' 10" (28.30m)

Beam: 22' 6" (6.86m)

Max Draft: 6' 6" (1.98m)

Clearance: 21' 5" (6.53m)

Speed, Capacities and Weight

Cruise Speed: 18 Kts. (21 MPH)

Max Speed: 23 Kts. (26 MPH)

Max Speed Range: 2000 Kts.

Displacement: 245000 Pounds

Water Capacity: 800 Gallons

Holding Tank: 220 Gallons

Fuel Capacity: 4845 Gallons

Accommodations

Total Cabins: 5

Total Berths: 5

Sleeps: 9

Total Heads: 5

Crew Cabin: 1

Crew Berths: 3

Crew Sleeps: 4

Crew Heads: 1

Hull and Deck Information

Hull Material: Fiberglass

Hull Color: White

Engine Information

Engines: 2

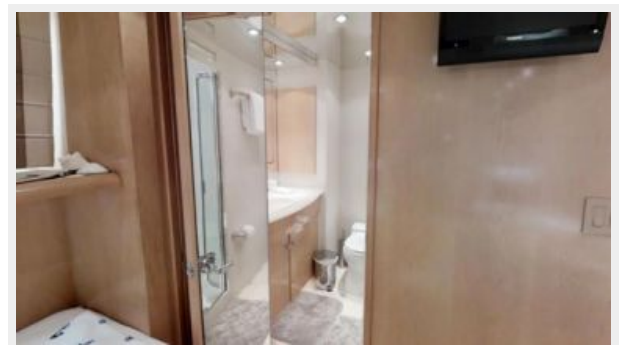
Manufacturer: MTU

Model: 16V-2000M91

Engine Type: Inboard

Fuel Type: Diesel

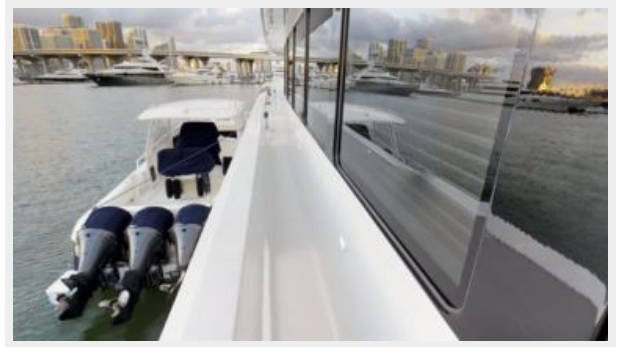
PHOTOS

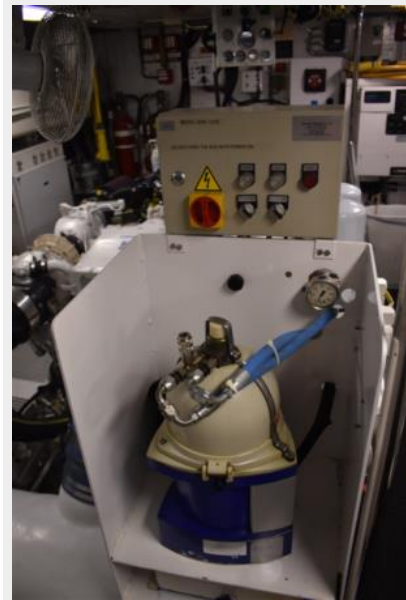
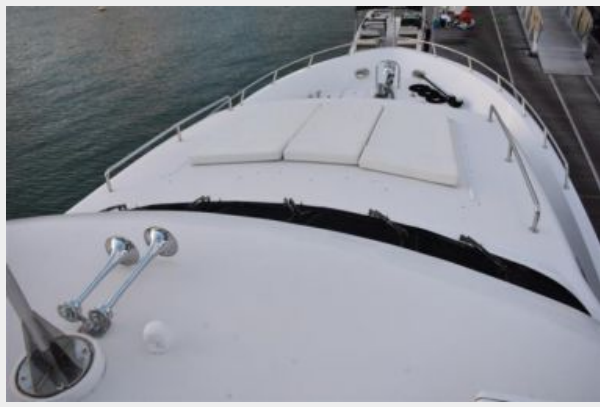
















CONTACTS

Andrey Shestakov, leading yacht broker of the sales department of Shestakov Yacht Sales Inc. Shestakov Yacht Sales Inc., the official representative of the Miami/Fort Lauderdale FL headquarters.

Contact details

Email: andrey@shestakovyachtsales.com

Web: shestakovyachtsales.com/en/

Telephones

USA: +1(954)274-4435

Office hours

Monday – Saturday: **9:00 - 21:00** EDT

Sunday: **closed**

Address



Harbour Towne Marina, 850 NE 3rd St,
STE 213, Dania, FL 33004