

GRACE — AZIMUT



Builder: AZIMUT

Year Built: 2014

Model: Motor Yacht

Price: PRICE ON APPLICATION

Location: United States

LOA: 54' 0" (16.46m)

Beam: 16' 2" (4.93m)

Max Draft: 3' 10" (1.17m)

Cruise Speed: 27 Kts. (31 MPH)

Max Speed: 32 Kts. (37 MPH)

Our experienced yacht broker, Andrey Shestakov, will help you choose and buy a yacht that best suits your needs **Grace — AZIMUT** from our catalogue. Presently, at Shestakov Yacht Sales Inc., we have a wide variety of yachts available on our sale's list. We also work in close contact with all the big yacht manufacturers from all over the world.

If you would like to buy a yacht **Grace — AZIMUT** or would like help answering any questions concerning purchasing, selling or chartering a yacht, please call **+1(954)274-4435**

TABLE OF CONTENTS

TABLE OF CONTENTS	2
SPECIFICATIONS	5
Overview	5
Basic Information	5
Dimensions	5
Speed, Capacities and Weight	5
Accommodations	6
Hull and Deck Information	6
DETAILED INFORMATION	7
Vessel Walkthrough	7
Staterooms	7
SPECS.	8
Electronics	8
Propulsion	9
Electrical Equipment	9
Tenders	10
Mechanical Disclaimer	11
Exclusions	11
Disclaimer	11
PHOTOS	12
Salon to Aft and Port View	12
Salon to Aft Deck View	12
Salon to Galley View	12
Salon to Lower Helm View	12
Galley View to Port	12
Galley Azimut Cutlery Drawer	12
Galley Azimut Flutes	13
Owner's Suite to Port	13

Owner's Suite to Port	13
Owner's Suite to Starboard with TV	13
Owner's Suite to Starboard	13
Owner's Suite with Settee and Vanity View	13
Owner's Suite with Vanity and Settee	14
Owner's Suite with View to Hallway	14
Hallway View to VIP Suite	14
Main Stateroom to Starboard View	14
VIP Suite	14
VIP Suite Door Detail	14
VIP Suite from Starboard	15
View from VIP to Salon and Twin Bunk	15
Guest Head	15
VIP Guestroom	15
Twin Bunk Stateroom	15
Twin Bunk Stateroom	15
Twin Bunk Stateroom	16
Twin Bunk Stateroom from Door	16
View to Lower Helm from Salon	16
View to Aft from Lower Helm	16
Aft Deck	16
Aft Deck with Sun Cover	16
Aft to Starboard View on Water	17
Flybridge Helm Detail	17
Flybridge from Tanning Deck	17
Flybridge Grill Detail	17
Flybridge Safety Gear Detail	17
Flybridge to Aft Deck View	17
Flybridge Archway	18

Bow to Flybridge	18
Lower Helm to Starboard Detail	18
Lower Helm to Dining and Salon	18
Lower Helm with Electronics	18
Azimut Name Detail	18
Engine Room Detail	19
Port Engine	19
Starboard Engine	19
Gangway and Tender in Water	19
Tender on Swim Platform	19
On Anchor View	19
Port Side View	20
Port Side View	20
Port with Swim Platform View and Gangway	20
Starboard on Anchor View	20
Starboard View to Bow	20
Starboard with Swim Platform	20
Full Size Render	21
CONTACTS	22
Contact details	22
Telephones	22
Office hours	22
Address	22

SPECIFICATIONS

Overview

2014 Azimut 54' Flybridge

Livability and Style Have a New Name!

Harmonious lines and one of the largest Flybridges in its class, for incredible moments of open-air relaxation, Azimut 54' combines functionality with elegant and refined aesthetics.

Meticulously and lovingly maintained by two owners who have taken care in overseeing every detail. Owners are going to a larger version of this boat!

Powered by MAN R6-730 -- Engine Hours: 390

Basic Information

Category: Motor Yacht

Model Year: 2014

Year Built: 2014

Country: United States

Fly Bridge: Yes

Dimensions

LOA: 54' 0" (16.46m)

LWL: 54' 0" (16.46m)

Beam: 16' 2" (4.93m)

Max Draft: 3' 10" (1.17m)

MFG Length: 54' 8" (16.66m)

Speed, Capacities and Weight

Cruise Speed: 27 Kts. (31 MPH)

Max Speed: 32 Kts. (37 MPH)

Displacement: 25600 Pounds

Water Capacity: 156 Gallons

Fuel Capacity: 618 Gallons

Accommodations

Total Cabins: 3

Total Heads: 2

Crew Cabin: 1

Crew Heads: 1

Hull and Deck Information

Hull Material: Fiberglass

DETAILED INFORMATION

Vessel Walkthrough

This Beautiful 2014 Azimut 54' Flybridge Truly Combines Elegance, Style, and Livability!

The unmistakable and classic Azimut lines at their finest!

Elegance and ease all around stand out in this lovely 2014 Azimut 54' Flybridge. Exterior styling and concept by Stefano Righini and interior by Azimut Yachts.

As she cuts a sleek line in the water, the ride is powerful yet comfortable. The interior walls are either luxurious wood details or soft linen colored cushion, accented by expansive windows covered with wooden blinds.

The full beam main stateroom features a double berth, large flat screen television, plenty of storage such as full sized closets and a port side table with a vanity plus discreet storage. A full head with a generous shower and elegantly appointed fixtures, along with a discreet washer/dryer combination complete the owner's cabin.

Another guest cabin with a second double berth and a third cabin with twin berths share a full head. All cabins are spacious, have ample storage and provide plenty of outdoor, accent and reading lights.

As sunlight streams in through the skylights heading up the stairs into the galley, dining table and lower helm station. The fully equipped port side galley features Miele appliances and stainless steel accents. On the starboard is the lower helm with top of the line electronics then a generous dining table for 6 plus, perfect for shared conversations with the captain, appetizers and cocktails.

Two steps down is the main salon with an L-Shaped Couch for 6-8, a retractable flat screen television and a floor to ceiling curtain to aft deck sliding glass doors as well as large windows with blinds, providing light or privacy.

Stepping out of the main salon to the teak floor aft deck, another sitting area and table welcome you with a large sunshade for the perfect pre-dinner apéritif. Teak hydraulic swim platform, transom and storage locker provide more space for activities and options.

A port side staircase leads you to the flybridge with a large manual opening soft top and a double sunbathing area with a table and sitting area. The bow is expansive and the perfect spot to take in the beauty that is this exceptional Azimut Flybridge!

Staterooms

- Best in Class Full Beam Owner's Cabin

- Number of Double Berths: 2
- Number of Twin Berths: 2
- Number of Cabins: 3
- Number of Heads: 2
- Crew Cabin for One Plus a Full Head
- Liferaft Capacity: 6

SPECS.

- Max Speed: 32 knots
- Cruising Speed: 27 knots
- LOA: 54'8"
- Beam: 16'2"

Electronics

- Cutting Edge Navigation Equipment
- Raymarine Hybridtouch Electronic Package
- Raymarine HD Color Radar
- Raymarine Video Cameras
- i70 Raymarine Multi-Function Instrument
- (2) Dual Raymarine Hybridtouch E Series 12.1"
- Raymarine Auto Pilot P70R
- Ritchie Compass
- Fusion Sound System
- JL Audio Speakers
- Bow and Stern Thruster
- MAN MMDS-LC CAN Engine Displays
- Hydraulic Swim Platform
- M5 TracVision Sat TV
- Under Water Lights
- "Idromar" Water Maker
- Fully Equipped Galley
- Flybridge with Double Sunbathing Area
- Convertible Helm Seat
- Dinette for 6 People
- Lifting Platform
- Lower Helm Station
- Quick CMC Chain Counter
- Bennett Trim Tabs Control
- ITT Jabsco Search Light Control

Propulsion

Engine #1

- Engine Make: Man Diesels
- Engine Model: R6-730
- Primary Engines: Inboard
- Drive Type: Direct
- Location: PORT
- Engine Year: 2014
- Hours: 390
- Power: 730hp

Engine #2

- Engine Make: Man Diesels
- Engine Model: R6-730
- Primary Engines: Inboard
- Drive Type: Direct
- Location: STARBOARD
- Engine Year: 2014
- Hours: 390
- Power: 730 hp
- Depth Sounder
- Log-Speedometer
- Repeater(s)
- Navigation Center
- Plotter
- Autopilot
- Compass
- GPS
- VHF
- Bow Thruster
- Electric Bilge Pump
- Microwave Oven
- Air Conditioning/Heating
- Refrigerator
- Sea Water Pump
- Xenta Joystick Control

Electrical Equipment

- Shore Power Inlet Outside Equipment/Extras
- Teak Cockpit

- Hydraulic Gangway
- Lifteraft
- Cockpit Table
- Covers: Bimini Top
- Radar
- Wind Speed and Direction
- TV Set
- Direct TV
- Sirius
- VCR
- DVD Player
- Radio
- CD Player
- Cockpit Speakers
- Washer/Dryer Combo
- Oven
- Air Compressor
- Electric Head
- Hot Water
- Fresh Water Maker
- Battery Charger
- Generator
- Teak Side Decks
- Radar Reflector
- Cockpit Cushions
- Swimming Ladder
- Cockpit Cover

Tenders

2017 10' AB Tender 30 horse 4-Stroke Honda with less than 15 Hours!

- Semi-Rigid Fiberglass Inflatable
- Navigation Lights
- Fiberglass Starboard Side Console
- Battery Switch
- VHF Radio
- Fusion Stereo System with JL Audio Speakers
- Atwood Sierra S 500 Automatic Bilge Pump
- Emergency Repair Kit Manual Hi Output Pump
- Anchor and PFD's
- Water Fuel Separator
- 3 Gallon Poly Fuel Tank

- Lines and Fenders Type 4 Throwable in Stainless Lifting Eyes

Mechanical Disclaimer

*Engine hours are as of the date of the original listing and are a representation of what the listing broker is told by the owner and/or actual reading of the engine hour meters. The broker cannot guarantee the true hours. It is the responsibility of the purchaser and/or his agent to verify engine hours, warranties implied or otherwise and major overhauls as well as all other representations noted on the listing brochure.

Exclusions

Owner's personal belongings.

Disclaimer

The Company offers the details of this vessel or yacht in good faith but cannot guarantee or warrant the accuracy of this information nor warrant the condition of the vessel. A buyer should instruct his representatives, agents, or his surveyors, to investigate such details as the buyer desires validated. This vessel or yacht is offered subject to prior sale, price change, or withdrawal without notice.

PHOTOS

Salon to Aft and Port View



Salon to Aft Deck View



Salon to Galley View



Salon to Lower Helm View



Galley View to Port



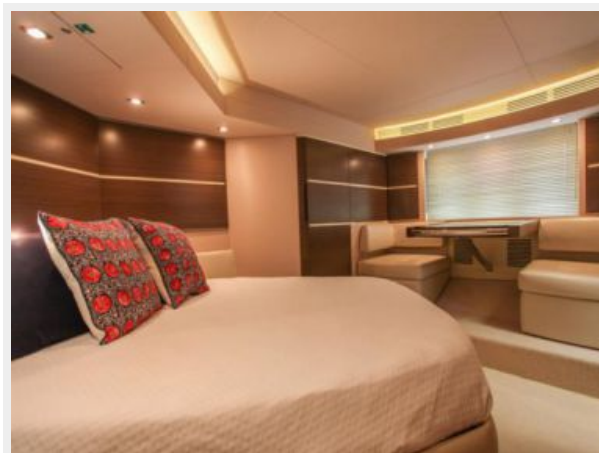
Galley Azimut Cutlery Drawer



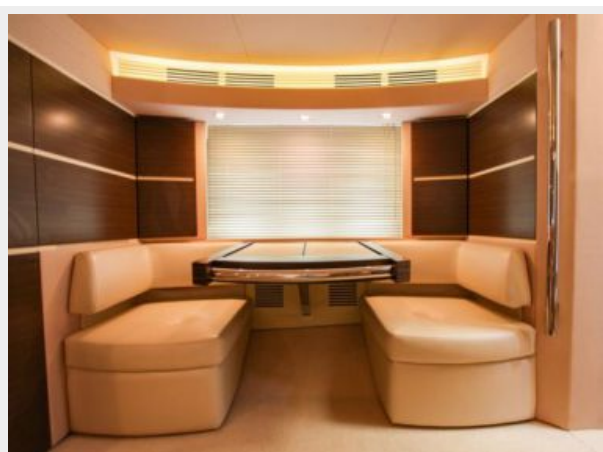
Galley Azimut Flutes



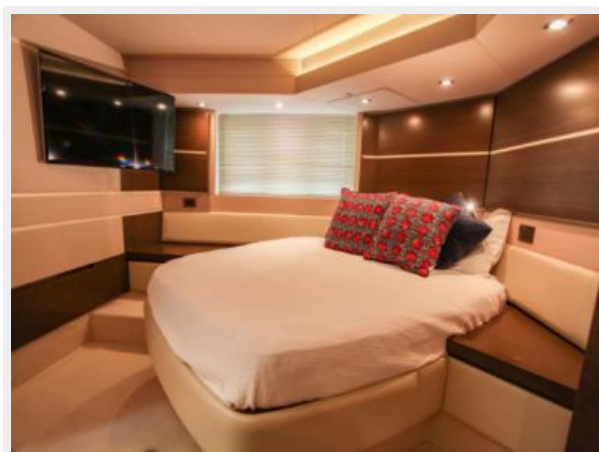
Owner's Suite to Port



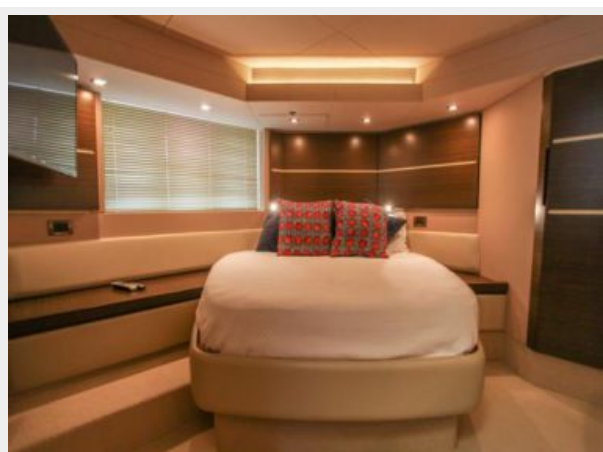
Owner's Suite to Port



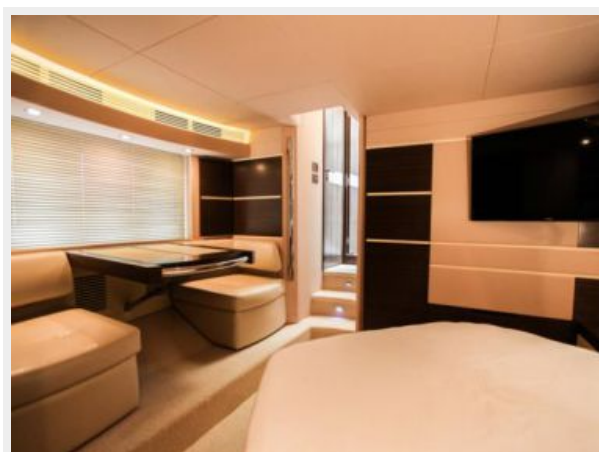
Owner's Suite to Starboard with TV



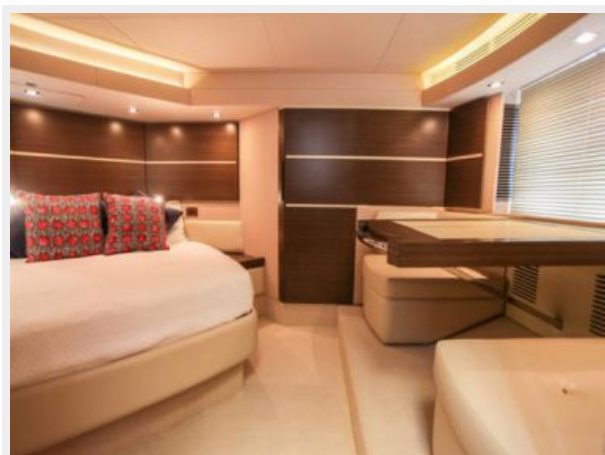
Owner's Suite to Starboard



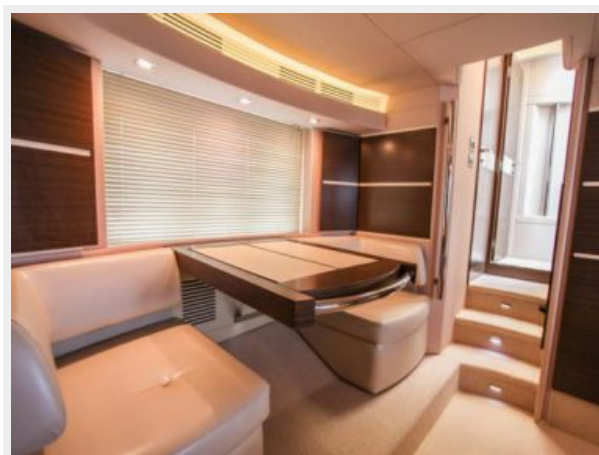
Owner's Suite with Settee and Vanity View



Owner's Suite with Vanity and Settee



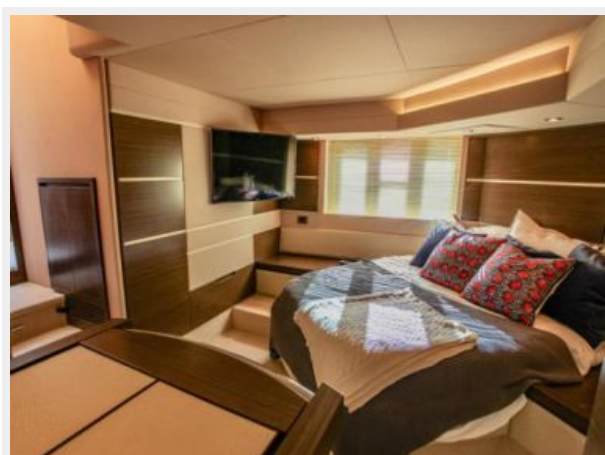
Owner's Suite with View to Hallway



Hallway View to VIP Suite



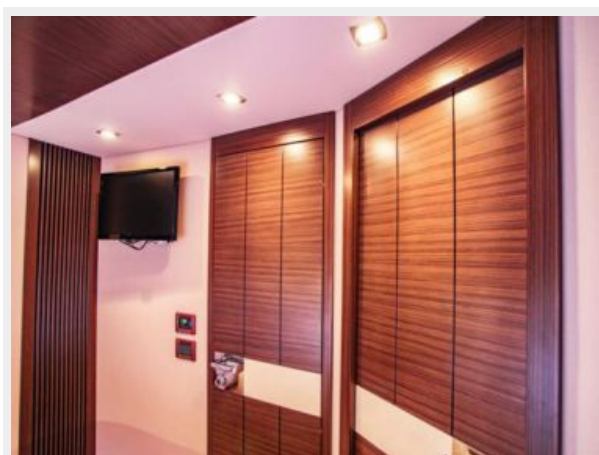
Main Stateroom to Starboard View



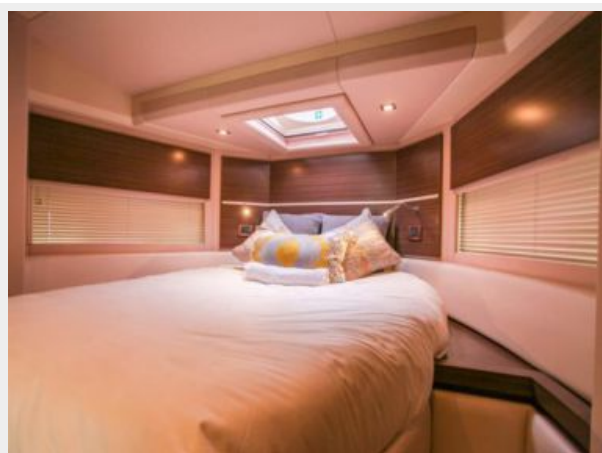
VIP Suite



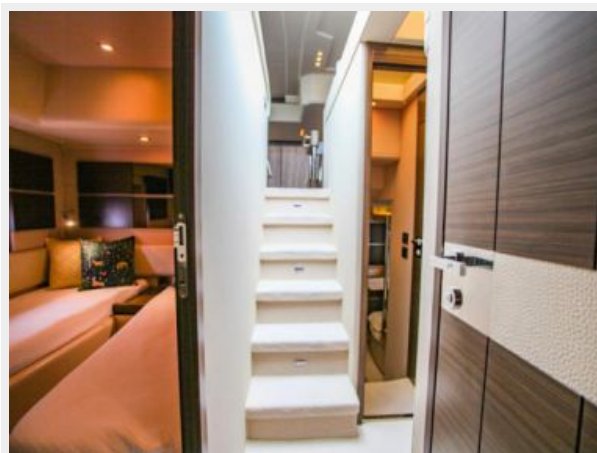
VIP Suite Door Detail



VIP Suite from Starboard



View from VIP to Salon and Twin Bunk



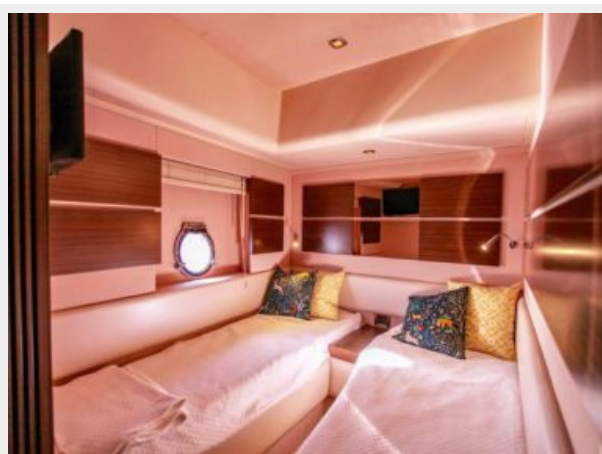
Guest Head



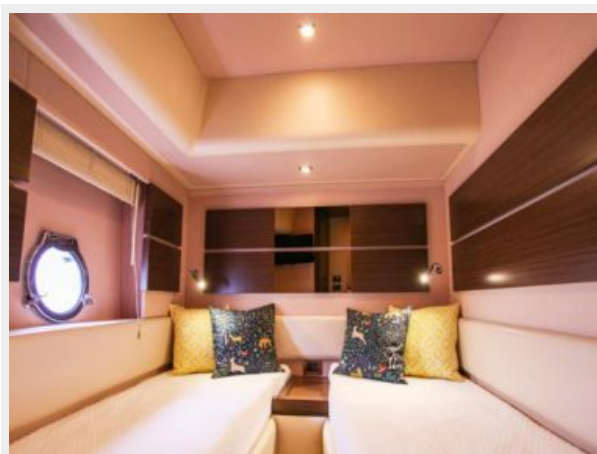
VIP Guestroom



Twin Bunk Stateroom

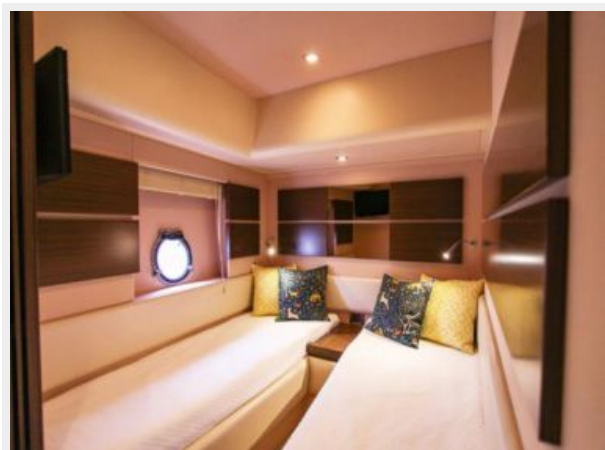


Twin Bunk Stateroom

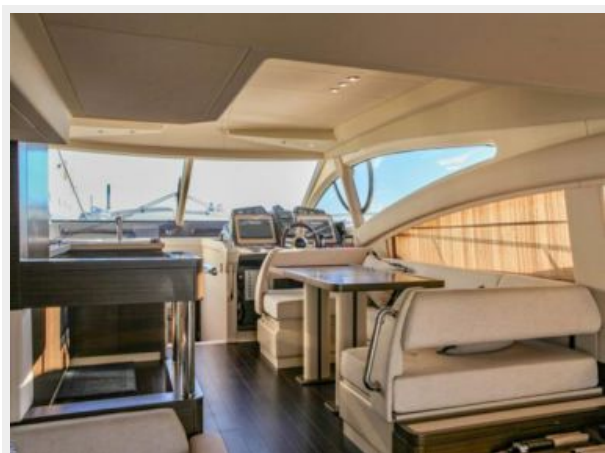


Twin Bunk Stateroom

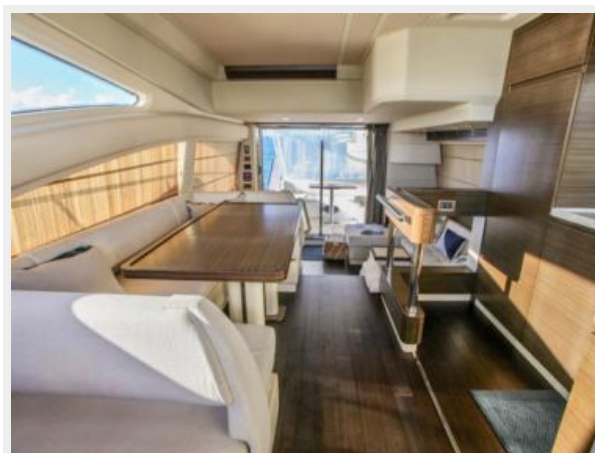
Twin Bunk Stateroom from Door



View to Lower Helm from Salon



View to Aft from Lower Helm



Aft Deck



Aft Deck with Sun Cover



Aft to Starboard View on Water



Flybridge Helm Detail



Flybridge from Tanning Deck



Flybridge Grill Detail



Flybridge Safety Gear Detail



Flybridge to Aft Deck View



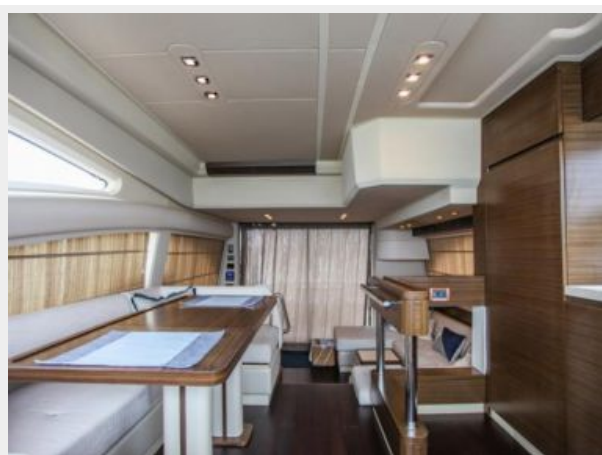
Flybridge Archway



Bow to Flybridge



Lower Helm to Dining and Salon



Lower Helm to Starboard Detail



Lower Helm with Electronics



Azimut Name Detail



Engine Room Detail



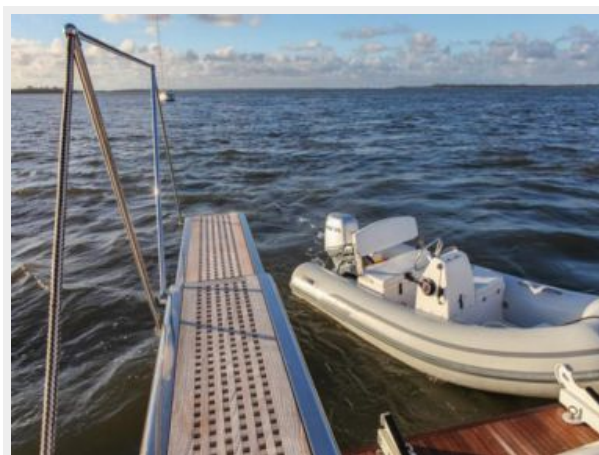
Port Engine



Starboard Engine



Gangway and Tender in Water



Tender on Swim Platform



On Anchor View



Port Side View



Port Side View



Port with Swim Platform View and Gangway



Starboard on Anchor View



Starboard View to Bow



Starboard with Swim Platform



Full Size Render



CONTACTS

Andrey Shestakov, leading yacht broker of the sales department of Shestakov Yacht Sales Inc. Shestakov Yacht Sales Inc., the official representative of the Miami/Fort Lauderdale FL headquarters.

Contact details

Email: **andrey@shestakovyachtsales.com**

Web: shestakovyachtsales.com/en/

Telephones

USA: **+1(954)274-4435**

Office hours

Monday – Saturday: **9:00 - 21:00 EDT**

Sunday: **closed**

Address



Harbour Towne Marina, 850 NE 3rd St,
STE 213, Dania, FL 33004