

HORSIN' AROUND — VIKING



Builder: VIKING

Year Built: 1998

Model: Sport Fisherman

Price: PRICE ON APPLICATION

Location: United States

LOA: 47' 0" (14.33m)

Beam: 15' 6" (4.72m)

Max Draft: 4' 5" (1.35m)

Cruise Speed: 29 Kts. (33 MPH)

Max Speed: 32 Kts. (37 MPH)

Our experienced yacht broker, Andrey Shestakov, will help you choose and buy a yacht that best suits your needs **Horsin' Around — VIKING** from our catalogue. Presently, at Shestakov Yacht Sales Inc., we have a wide variety of yachts available on our sale's list. We also work in close contact with all the big yacht manufacturers from all over the world.

If you would like to buy a yacht **Horsin' Around — VIKING** or would like help answering any questions concerning purchasing, selling or chartering a yacht, please call **+1(954)274-4435**

TABLE OF CONTENTS

TABLE OF CONTENTS	2
SPECIFICATIONS	4
Overview	4
Basic Information	4
Dimensions	4
Speed, Capacities and Weight	4
Accommodations	4
Hull and Deck Information	4
Engine Information	5
DETAILED INFORMATION	6
Features	6
Exclusions	8
Exclusions	8
Disclaimer	8
PHOTOS	9
Starboard Profile	9
Starboard Profile	9
Starboard Profile	9
Port side	9
Port side	9
Bow	9
Bow	10
Cockpit	10
Helm	10
Stern	10
Salon	10
Galley	10
Galley	11

Master Stateroom	11
Head	11
Guest Stateroom	11
Head	11
Engine Room	11
CONTACTS	12
Contact details	12
Telephones	12
Office hours	12
Address	12

SPECIFICATIONS

Overview

1998 47' VIKING CONV. "HORSN' AROUND"

Basic Information

Category: Sport Fisherman

Sub Category: Convertible

Model Year: 1998

Year Built: 1998

Country: United States

Dimensions

LOA: 47' 0" (14.33m)

Beam: 15' 6" (4.72m)

Max Draft: 4' 5" (1.35m)

Speed, Capacities and Weight

Cruise Speed: 29 Kts. (33 MPH)

Max Speed: 32 Kts. (37 MPH)

Displacement: 47000 Pounds

Water Capacity: 160 Gallons

Holding Tank: 60 Gallons

Fuel Capacity: 700 Gallons

Accommodations

Total Cabins: 2

Hull and Deck Information

Hull Material: Fiberglass

Engine Information

Engines: 2

Manufacturer: MAN

Model: D2848 LE403

Engine Type: Inboard

Fuel Type: Diesel

DETAILED INFORMATION

Features

VESSEL WALKTHROUGH

Entering the salon there is an L-shaped sofa to port with teak coffee table. Forward is the U-shaped galley with Amtico flooring, Corian countertop, two-burner stove, microwave oven and refrigerator/freezer. To port are teak cabinets housing the electrical panel and entertainment system. Forward to port is the L-shaped dinette with teak table.

Moving forward and down to the cabin area the guest stateroom is to port with upper/lower berths, hanging locker and drawers. There is a private entry to the guest head with stall shower, Amtico flooring, Corian counters and medicine cabinet. The guest head doubles as the day head with entry from the companionway.

Moving forward there is a stacked washer/dryer to port.

The Master Stateroom is forward with a centerline queen berth that lifts and has storage and drawers below. There are cabinets port and starboard and a large hanging locker to starboard. The ensuite master head has a stall shower, Amtico flooring, Corian counters and medicine cabinet.

GALLEY

- Two-burner Princess glasstop stove
- Sharp Carousel microwave oven
- Kenmore upright refrigerator/freezer
- Single bowl sink
- Corian counters
- Pressure and dockside fresh water system
- Hot water heater
- Kenmore washer
- Kenmore dryer
- Amtico flooring

ELECTRICAL SYSTEM

- Onan 15 kw generator with 4500 hours in sound box
- 10 Group 31 batteries in boxes (new 10/20127)
- Glendinning cabledmaster with 50 amp shore cord
- Phase-three PT-24-13 24 volt battery charger
- Dolphin 60 amp 12-volt battery charger
- Battery isolation switches
- Battery parallel switch

- Systems monitor
- 120 volt/24 volt AC systems
- 12 volt/24 volt DC systems

ELECTRONICS AND NAVIGATION

- Garmin GPS map 7616 XSV plotter
- Garmin GPS map 741 plotter
- Garmin autopilot
- Furuno FCV-292 sounder
- Garmin XHD2 Radar Array 4/2018
- Ritchie compass
- ICOM – IC-M602 VHF radio
- KVH M5 satellite TV
- Toshiba LCD TV (salon)
- Sony blue Ray Disc/DVD player (salon)
- JVC CD player (salon)
- Sony Receiver with Bose speakers (salon)
- JVC television (Master Stateroom)

HULL and DECK EQUIPMENT

- Bow Rail
- Bow Pulpit
- Fortress anchor
- Quick 2000W windlass 4/2018
- Transom door and gate
- Three-sided isinglass Flybridge enclosure
- ACR searchlight
- Navigation and anchor lights
- Frameless salon windows
- Flybridge fiberglass hardtop
- Teak helm pod with single lever controls
- Two teak helm chairs
- Horn
- Side and rear spreader lights
- Sliding salon door
- Cockpit engine room door
- Hunter-Douglas salon blinds
- Teak and fabric salon valences

FISHING EQUIPMENT

- Rupp double spreader outriggers
- Rupp center outrigger

- 6 Cockpit rod holders
- 4 Haunch rod holders
- 6 Flybridge rail rod holders
- Transom door and gate
- Fighting chair with rocket launcher
- Cockpit tackle center with drawers
- Cockpit freezer
- Cockpit sink
- Fresh and saltwater wash downs
- Large in-deck fish box
- Two manual Penn teaser reels

MECHANICAL EQUIPMENT

- Central vacuum system
- Engine block heaters
- Fuel priming pumps
- Racor fuel filters
- Dripless shaft and rudder seals
- Oil change system
- Seastar steering
- Sea cocks
- Remote mounted engine room oil filters
- Bilge blowers
- Automatic bilge pumps
- Emergency engine stops

Exclusions

Owner's personal effects are excluded from the deal.

Exclusions

Owner's personal belongings.

Disclaimer

The Company offers the details of this vessel or yacht in good faith but cannot guarantee or warrant the accuracy of this information nor warrant the condition of the vessel. A buyer should instruct his representatives, agents, or his surveyors, to investigate such details as the buyer desires validated. This vessel or yacht is offered subject to prior sale, price change, or withdrawal without notice.

PHOTOS

Starboard Profile



Starboard Profile



Starboard Profile



Port side



Port side



Bow



Bow



Cockpit



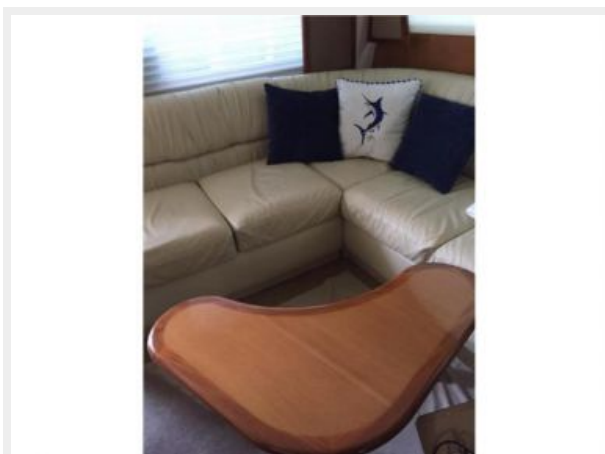
Stern



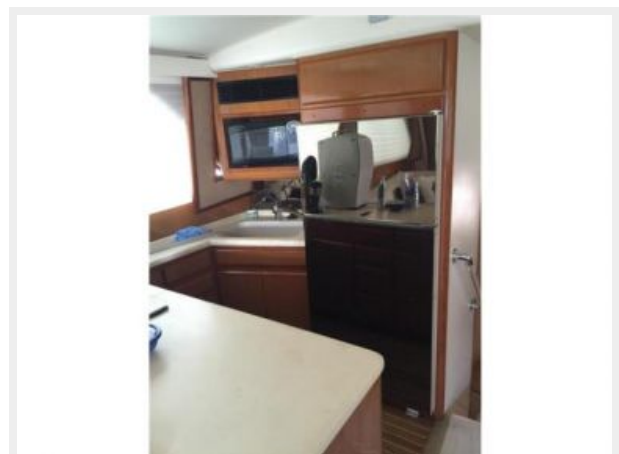
Helm



Salon



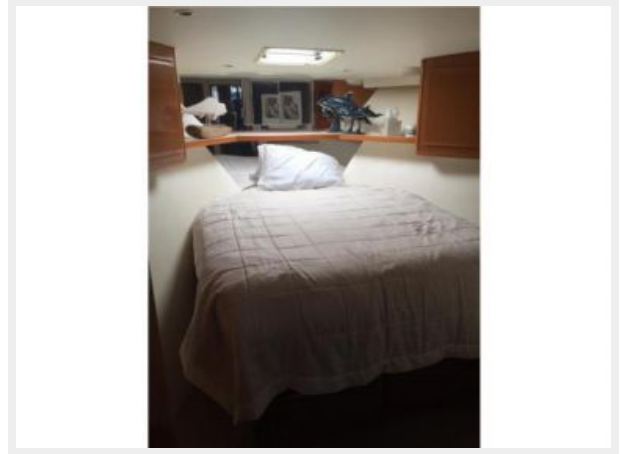
Galley



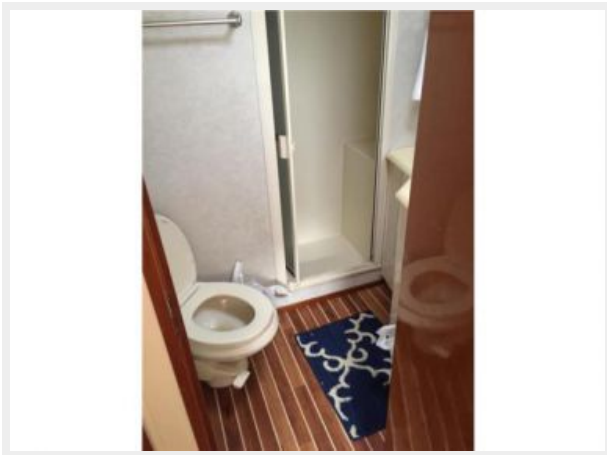
Galley



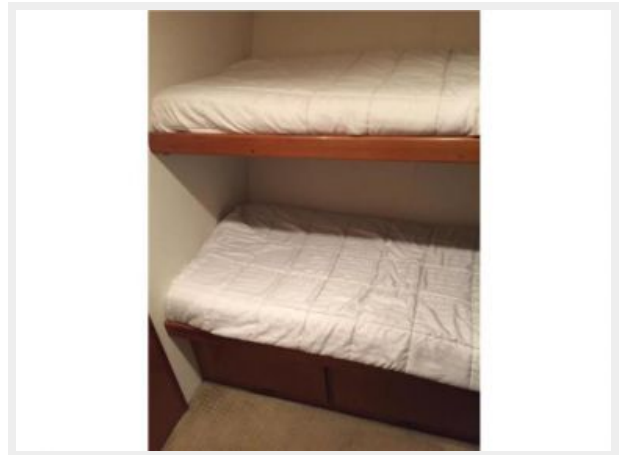
Master Stateroom



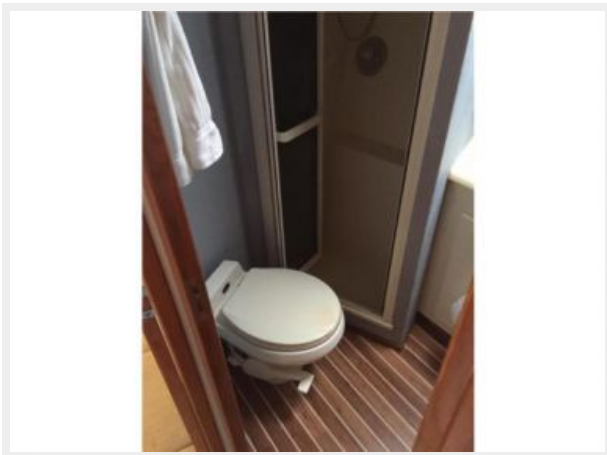
Head



Guest Stateroom



Head



Engine Room



CONTACTS

Andrey Shestakov, leading yacht broker of the sales department of Shestakov Yacht Sales Inc. Shestakov Yacht Sales Inc., the official representative of the Miami/Fort Lauderdale FL headquarters.

Contact details

Email: andrey@shestakovyachtsales.com

Web: shestakovyachtsales.com/en/

Telephones

USA: +1(954)274-4435

Office hours

Monday – Saturday: **9:00 - 21:00** EDT

Sunday: **closed**

Address



Harbour Towne Marina, 850 NE 3rd St,
STE 213, Dania, FL 33004