

## "ABOUT TIME" — PRINCESS YACHTS



**Builder:** PRINCESS YACHTS

**Year Built:** 2016

**Model:** Flybridge

**Price:** PRICE ON APPLICATION

**Location:** United States

**LOA:** 54' 8" (16.66mm)

**Beam:** 15.58

**Max Draft:** 4' 1" (1.24mm)

Our experienced yacht broker, Andrey Shestakov, will help you choose and buy a yacht that best suits your needs "About Time" — PRINCESS YACHTS from our catalogue. Presently, at Shestakov Yacht Sales Inc., we have a wide variety of yachts available on our sale's list. We also work in close contact with all the big yacht manufacturers from all over the world.

If you would like to buy a yacht "About Time" — PRINCESS YACHTS or would like help answering any questions concerning purchasing, selling or chartering a yacht, please call +1(954)274-4435

---

# TABLE OF CONTENTS

---

TABLE OF CONTENTS	2
SPECIFICATIONS	3
Overview	3
Basic Information	4
Dimensions	4
Speed, Capacities and Weight	4
Accommodations	4
Hull and Deck Information	4
Engine Information	5
PHOTOS	6
Flybridge Deck	6
Main Deck	6
Lower Deck	6
CONTACTS	7
Contact details	7
Telephones	7
Office hours	7
Address	7

---

# SPECIFICATIONS

---

## Overview

---

### Interior Features

- Three stateroom, two head layout
- Crew cabin accommodations
- Electric high/low salon table
- Rovere Oak Satin Wood interior
- Platinum leather upholstery
- Wenge v-groove flooring throughout main deck
- Galley Avonite: Carrera White
- Microwave/ Convection oven with wood trim
- Salon ice maker
- Central vacuum
- Air conditioning with reverse cycle heat, 62,000 BTU
- 40" Flatscreen LED TV in salon on powered lift
- 28" Flatscreen LED TV in Master
- 28" Flatscreen LED TV in Forward VIP with stereo/ DVD/ MP3 player
- Premium Audio system: Harmon Kardon 2.1 Blu-Ray system with KEF speakers in the salon & master stateroom. Radio/ iPod/ MP# player on flybridge linked to salon stereo

### Exterior Features

- Steel grey hull color
- Electro-hydraulic steel grey swim platform
- Teak laid flybridge deck
- Waterproof cockpit speakers linked to flybridge stereo
- Copex with mouse from radar arch to lower helm
- Exterior upholstery in Movida Metallic
- Foredeck sunbed in Movida Metallic
- Foredeck anchor washdown
- Kenyon Barbecue
- Electric powered bimini top in Charcoal Grey
- Underwater lights

### Electronics & Navigation

- Raymarine E125 Chartplotter/ GPS with 12" multi-function display and external GPS - Lower helm
- Raymarine multi-function display - Upper helm
- Raymarine HD color radar with 24" 4kw radome

### Mechanical & Electrical

- 13.5kw Generator
- Glendinning cablemaster
- Stainless steel exhaust clamps
- Electric and manual holding tank discharge
- Fuel and water separator

---

## Basic Information

---

**Category:** Flybridge

**Sub Category:** Flybridge

**Model Year:** 2016

**Year Built:** 2016

**Country:** United States

---

## Dimensions

---

**LOA:** 54' 8" (16.66mm)

**Beam:** 15.58

**Max Draft:** 4' 1" (1.24mm)

---

## Speed, Capacities and Weight

---

**Water Capacity:** 133 Gallons

**Fuel Capacity:** 528 Gal Gallons

---

## Accommodations

---

**Total Cabins:** 3

**Total Heads:** 2

---

## Hull and Deck Information

---

**Hull Material:** Fiberglass

**Hull Color:** Grey

---

## Engine Information

---

**Engines:** 2

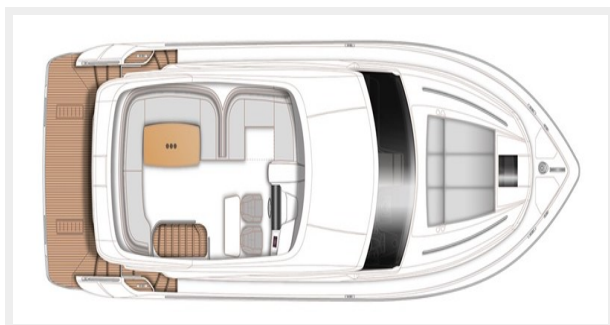
**Manufacturer:** CAT

**Engine Type:** Inboard

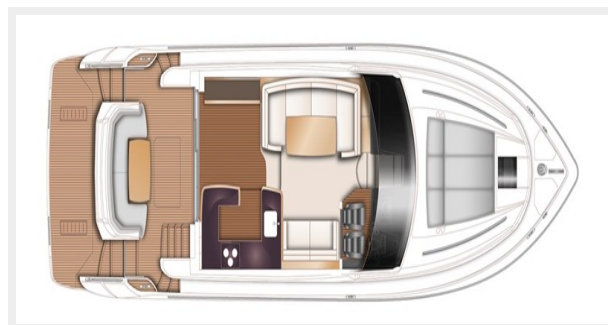
**Fuel Type:** Diesel

# PHOTOS

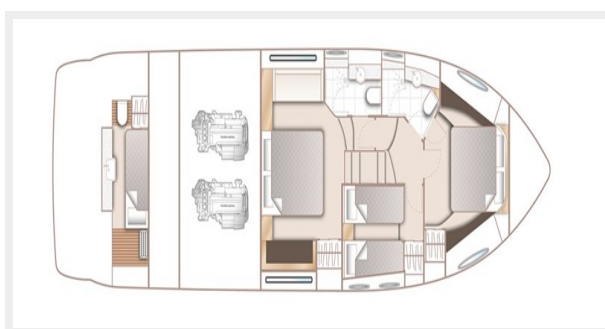
**Flybridge Deck**



**Main Deck**



**Lower Deck**



---

# CONTACTS

---

Andrey Shestakov, leading yacht broker of the sales department of Shestakov Yacht Sales Inc. Shestakov Yacht Sales Inc., the official representative of the Miami/Fort Lauderdale FL headquarters.

---

## Contact details

---

Email: **andrey@shestakovyachtsales.com**

Web: [shestakovyachtsales.com/en/](http://shestakovyachtsales.com/en/)

---

## Telephones

---

USA: +1(954)274-4435

---

## Office hours

---

Monday – Saturday: **9:00 - 21:00** EDT

Sunday: **closed**

---

## Address

---



Harbour Towne Marina, 850 NE 3rd St,  
STE 213, Dania, FL 33004