

## FLEUR DE LIS — AZIMUT



**Builder:** [AZIMUT](#)

**Year Built:** 2016

**Model:** Motor Yacht

**Price:** PRICE ON APPLICATION

**Location:** United States

**LOA:** 77' 0" (23.47m)

**Beam:** 18' 3" (5.56m)

**Max Draft:** 4' 3" (1.30m)

**Cruise Speed:** 29 Kts. (33 MPH)

**Max Speed:** 35 Kts. (40 MPH)

Our experienced yacht broker, Andrey Shestakov, will help you choose and buy a yacht that best suits your needs **FLEUR DE LIS — AZIMUT** from our catalogue. Presently, at Shestakov Yacht Sales Inc., we have a wide variety of yachts available on our sale's list. We also work in close contact with all the big yacht manufacturers from all over the world.

If you would like to buy a yacht **FLEUR DE LIS — AZIMUT** or would like help answering any questions concerning purchasing, selling or chartering a yacht, please call **+1(954)274-4435**

# TABLE OF CONTENTS

TABLE OF CONTENTS	2
SPECIFICATIONS	4
Overview	4
Basic Information	4
Dimensions	4
Speed, Capacities and Weight	4
Accommodations	4
Hull and Deck Information	5
Engine Information	5
DETAILED INFORMATION	6
Azimut	6
Fly Bridge	6
Cockpit	6
Cabin Helm	6
Salon	7
Galley	7
Master with En suite	7
VIP with En Suite	8
Starboard Guest Cabin with En Suite	8
Starboard Guest Cabin 2 & En Suite	8
Crew Quarters	9
Mechanical/Electrical	9
Exclusions	9
Disclaimer	9
PHOTOS	10
CONTACTS	21
Contact details	21
Telephones	21

---

Office hours	21
Address	21

---

---

# SPECIFICATIONS

---

## Overview

---

This beautiful express cruiser with fly bridge has all the elements for a perfect yachting experience. She has sexy lines yet still houses four cabins and spacious crew quarters. Her garage boasts room for a tender and a jet ski.

## Basic Information

---

**Category:** Motor Yacht

**Sub Category:** Cruiser

**Model Year:** 2016

**Year Built:** 2016

**Country:** United States

**Vessel Top:** Bimini Top

**Fly Bridge:** Yes

## Dimensions

---

**LOA:** 77' 0" (23.47m)

**Beam:** 18' 3" (5.56m)

**Max Draft:** 4' 3" (1.30m)

**Clearance:** 17' 5" (5.31m)

## Speed, Capacities and Weight

---

**Cruise Speed:** 29 Kts. (33 MPH)

**Max Speed:** 35 Kts. (40 MPH)

**Displacement:** 116000 Pounds

**Water Capacity:** 290 Gallons

**Holding Tank:** 113 Gallons

**Fuel Capacity:** 1057 Gallons

## Accommodations

---

**Total Cabins:** 4

**Total Heads:** 4

---

## Hull and Deck Information

---

**Hull Material:** Fiberglass

---

## Engine Information

---

**Engines:** 3

**Manufacturer:** Volvo

**Model:** IPS D13

**Engine Type:** Inboard

**Fuel Type:** Diesel

---

# DETAILED INFORMATION

---

## Azimut

---

Azimut says: This Azimut has been designed and engineered according to the highest standards applied in the recreational industry for production boats. With CE Class A and NMMA certification, the boat is in compliance with the two major safety codes for boats under 24 meters.

## Fly Bridge

---

- Twin helm seats
- Wrap around seating
- Navico screen
- Volvo autopilot
- Volvo joystick
- Raymarine screen
- Raymarine VHF
- Custom Bimini
- Custom table

## Cockpit

---

- Sliding glass doors to salon
- Large sunpad with cushions
- Cockpit sofa with table
- Bar to starboard with double grill, sink, icemaker and fridge
- Aft control station with IPS joystick and Volvo display
- Starboard boarding gate for boarding ladder
- Quick Winches on both sides
- Large hatch for engine room access
- Retractable shade
- Passarelle
- Hot and cold shower
- Teak decks
- Garage that stores tender and jet ski

## Cabin Helm

---

Starboard side

- Twin Raymarine Screens

- IPS Joystick
- Sidepower bow thrusters
- Jabsco searchlight remote
- Volvo display
- Leather adjustable steering wheel
- Ritchie Compass
- Volvo Autopilot
- Volvo trimtab controls
- Naviop systems monitor
- Raymarine VHF
- Chain Counter
- Two helm seats

---

## Salon

- L-shaped sofa to starboard (cream color)
- Double mocha leather barrel chairs.
- Storage ottoman
- Cabinets with ample storage to both port and starboard
- Electronic Sunroof
- Bar with sink, refrigerator and icemaker
- Samsung 55" TV
- LED lights throughout
- Roman blinds
- Dining table for seven

---

## Galley

- Miele Dishwasher
- Miele Refrigerator/Freezer
- Miele Oven
- Miele Stove top ( 4 Burners)
- Double Sink
- Ample cabinet storage
- Two opening portholes

---

## Master with En suite

- King Berth with sprung mattress and storage below
- Storage Cabinet to port
- Settee/sofa to starboard with opening vanity

- Large Windows with opening windows
- Reading lamps above bed
- Large wardrobe with cabinetry

#### Ensuite starboard side

- Large shower with marble insert and adjustable shower head with wood laminate floor
- Tecma head
- glass sink
- upholstered wall decor
- medicine cabinet
- 

---

### **VIP with En Suite**

- Double berth with storage below
- TV with satellite receiver
- Concealed vanity below TV with power outlet
- Two reading lamps
- Large windows on both sides
- Bose surround sound
- Large hanging locker
- Ensuite head with Tecma head, Glass bowl sink, opening porthole

---

### **Starboard Guest Cabin with En Suite**

- Two Twin Beds with fold down table between for filler
- Pullman Berth
- Sconce centered above the two beds
- Large window with opening porthole
- Wardrobe with mirrored door
- Ensuite head with Tecma head, shower, Opening porthole and bowl sink

---

### **Starboard Guest Cabin 2 & En Suite**

- Two twin beds
- Large sconce overhead
- Window with opening porthole
- wardrobe with mirror door
- Samsung TV, bose sound
- Ensuite head: Shower, Bowl sink, Tecma head



---

## Crew Quarters

---

Can be entered from the engine room or the port side of the salon behind concealed door.

- Two twin staterooms
- Separate head with shower
- Miele Washer and Miele Dryer

---

## Mechanical/Electrical

---

- MasTwin 28kW Kohler generators
- Twin 50amp shore power inlets and cords
- 10 x 24V batteries
- 6 batteries for engines
- 3 chargers
- 2 Cablemasters
- Mastervolt 24V converter
- Newmar DC coverter

### Engines

- 3 X D13 Volvo IPS engines (900 hp each)
- Bowthruster
- 2 Seakeepers
- Dual Racor fuel filters
- Condaria AC system
- Seafire suppression system
- 5 bilge pumps

---

## Exclusions

---

Owner's personal belongings.

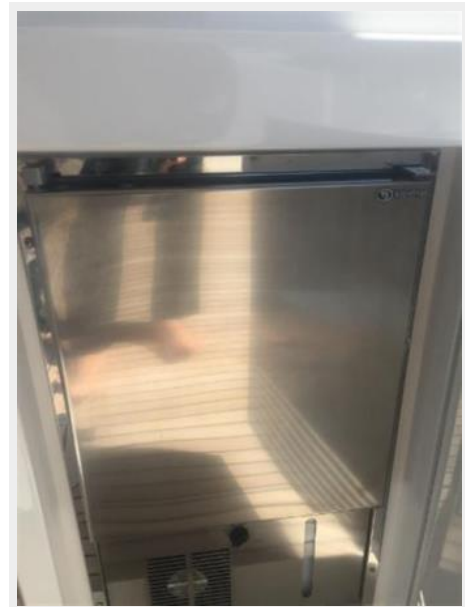
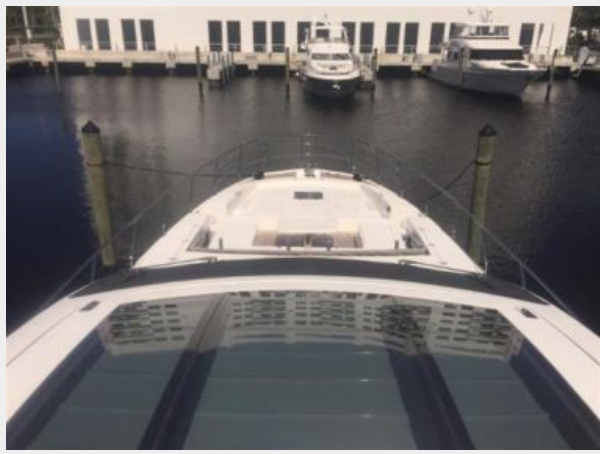
---

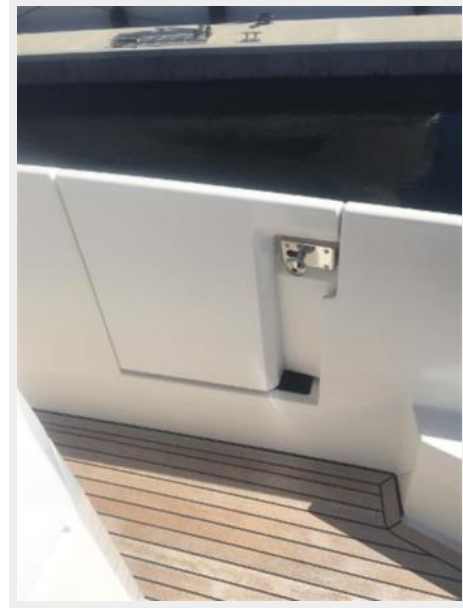
## Disclaimer

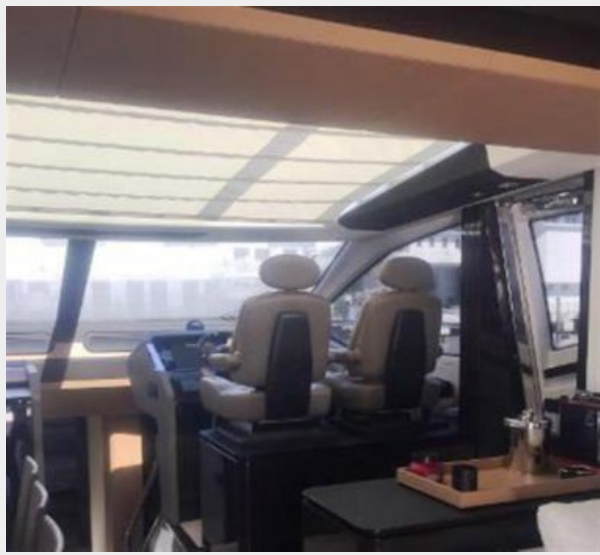
---

The Company offers the details of this vessel or yacht in good faith but cannot guarantee or warrant the accuracy of this information nor warrant the condition of the vessel. A buyer should instruct his representatives, agents, or his surveyors, to investigate such details as the buyer desires validated. This vessel or yacht is offered subject to prior sale, price change, or withdrawal without notice.

# PHOTOS

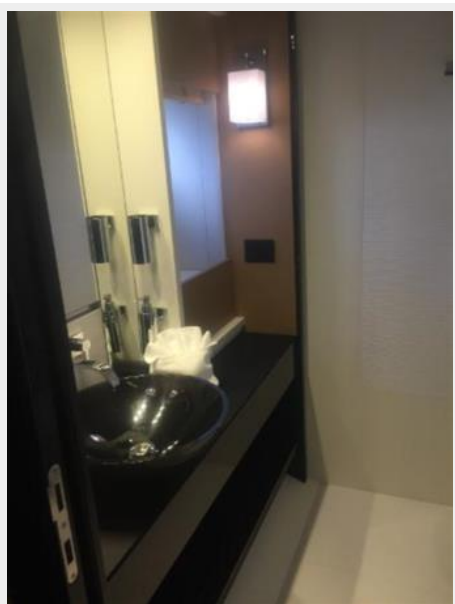
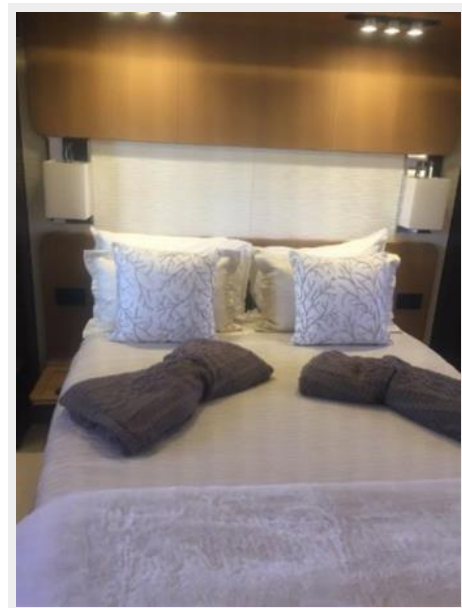
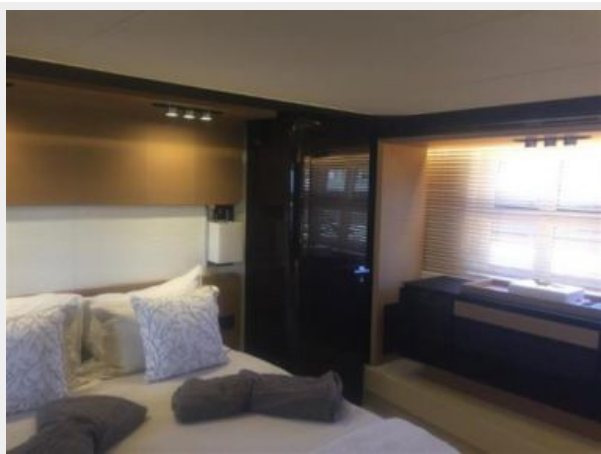
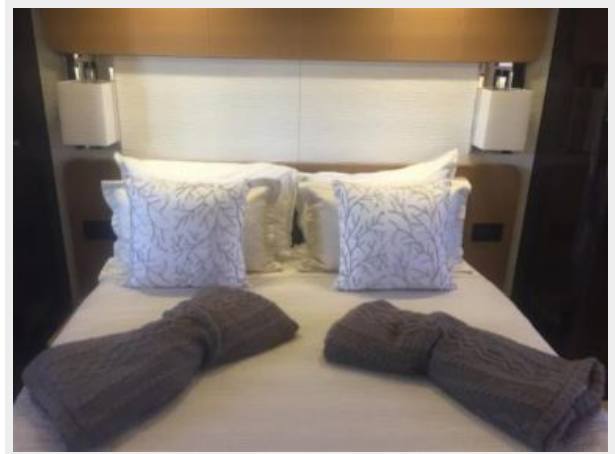


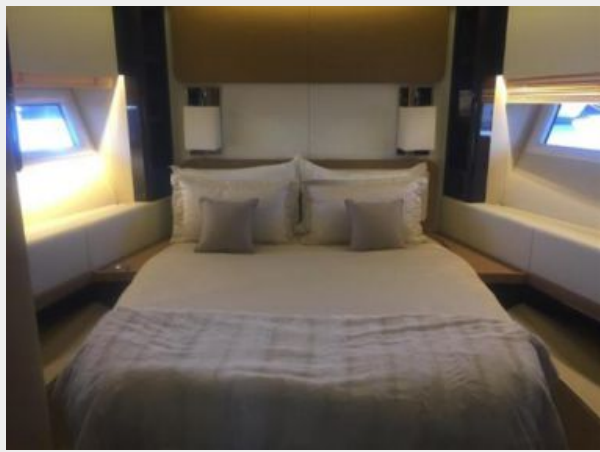




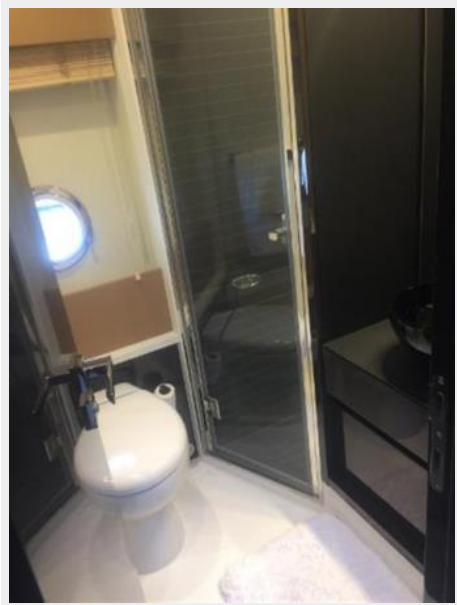
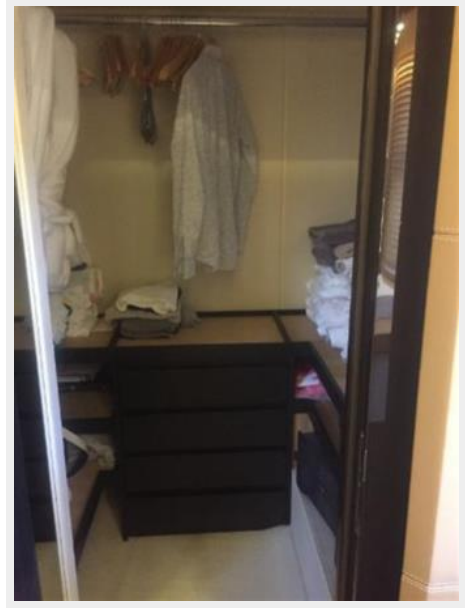


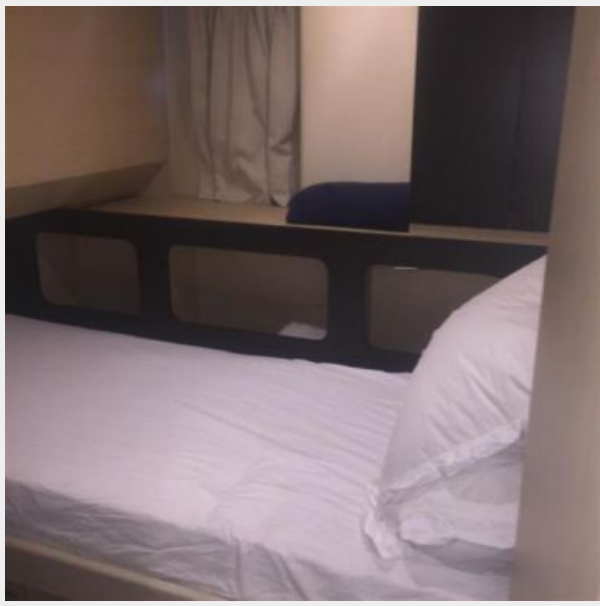


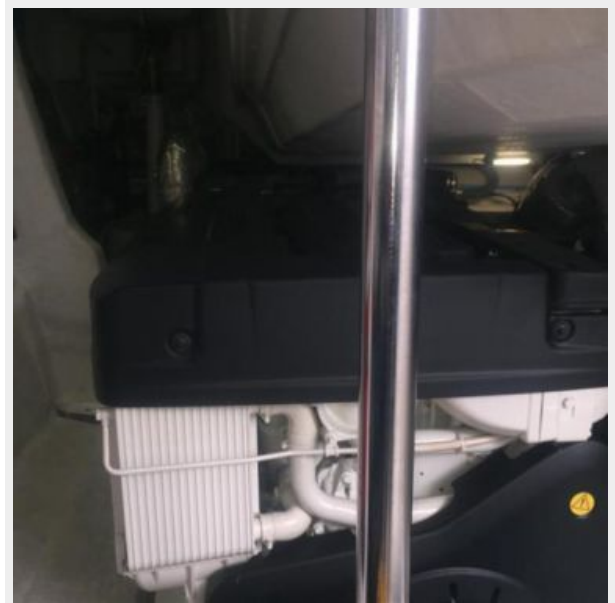














# CONTACTS

---

Andrey Shestakov, leading yacht broker of the sales department of Shestakov Yacht Sales Inc. Shestakov Yacht Sales Inc., the official representative of the Miami/Fort Lauderdale FL headquarters.

## Contact details

---

Email: [andrey@shestakovyachtsales.com](mailto:andrey@shestakovyachtsales.com)

Web: [shestakovyachtsales.com/en/](http://shestakovyachtsales.com/en/)

## Telephones

---

USA: +1(954)274-4435

## Office hours

---

Monday – Saturday: **9:00 - 21:00** EDT

Sunday: **closed**

## Address

---



Harbour Towne Marina, 850 NE 3rd St,  
STE 213, Dania, FL 33004