

TRUE BLUE — SABRE YACHTS



Судостроитель: SABRE YACHTS

Год постройки: 2012

Модель: Крейсер

Цена: ЦЕНА ЯХТЫ ПО ЗАПРОСУ

Местонахождение: United States

Длина общая: 48' 0" (14.63m)

Ширина: 5' 4" (1.63m)

Макс. осадка: 3' 9" (1.14m)

Крейс. скорость: 27 Kts. (31 MPH)

Купить True Blue — SABRE YACHTS а также выбрать подходящую вам яхту из нашего каталога яхт вам поможет опытный яхтенный брокер Андрей Шестаков. На сегодняшний день компания Shestakov Yacht Sales Inc. имеет большое количество яхт в собственном списке продаж, а также тесно сотрудничает со всеми крупными яхтенными производителями по всему миру.

Для того чтобы купить яхту True Blue — SABRE YACHTS а также проконсультироваться по любому вопросу связанному с покупкой, продажей, чартером яхт позвоните по телефону **+7(918)465-66-44**.

ОГЛАВЛЕНИЕ

ОГЛАВЛЕНИЕ	2
ХАРАКТЕРИСТИКИ	3
Обзор	3
Основная информация	8
Размеры	8
Скорость, вместимость и масса	8
Размещение	9
Корпус и палуба	9
Информация о двигателе	9
ФОТОГРАФИИ	10
КОНТАКТЫ	23
Контактная информация	23
Телефоны	23
Время работы	23
Адрес	23

ХАРАКТЕРИСТИКИ

Обзор

Steering System Joystick Control Custom Options and Additional Equipment

- Crew quarters with head, TV, berth pantry and cabinet drawers
- Dual power Stidd helm chairs, electric
- Additional factory grab rails throughout interior
- Custom LED reading lights (2) at main salon entrance
- Custom cockpit powered cooler under aft facing seat in cockpit
- Custom wet bar in salon with bottle storage, sink, hot/cold water and trash bin
- Ice maker in salon
- SureShade electric sun shade
- Cockpit cooler 12V electric
- (4) Lumintec LED underwater lights

Upgrades

- Awlgrip Flag Blue new August 2015
- House, engine and generator batteries new January 2017
- Fresh water pump new March 2017

Navigational Electronics

- Garmin 7215 MFD
- Garmin 7215 MFD - second display
- Garmin 604 HD 4kW open array radar
- Garmin sounder
- Garmin VHF radio at helm
- Garmin VHF radio at master
- (2) 8' VHF antennas
- Garmin GMI10 depth
- Airmar 20 degree bronze transducer 600W
- Zeus autopilot with Skyhook
- Search light with remote at helm
- Hardtop electronics Awlgrip to match deck color

Entertainment / Audio System

- Intellian D4 Satellite System (DirecTV) to three zones
- Second dummy dome
- Pioneer touchscreen audio (salon and cockpit) with subwoofer and amplifier

Standard Equipment and Specifications

- **HULL**

- Modified Deep “V” Planing hull design, with shallow pod drive tunnels.
- 14° deadrise at transom, 23° deadrise amidships.
- ISO NPG white gelcoat w/ vinylester back-up resin.
- Bottom, topsides and transom VIP resin infused biaxial E-glass with Airex C70 foam core.
- Stringer system biaxial E-glass with foam core.
- Bulkheads vacuum-bagged biaxial E-glass with polypropylene honeycomb core.
- Molded E-glass swim platform with molded-in anti-skid surface.
- Hull side rubbing strakes.
- PVC rub rail with stainless steel cap.
- Gold recessed cove stripe.

- **DECK and HARDTOP**

- ISO NPG gelcoat.
- VIP resin infused biaxial E-glass with balsa core.
- Molded-in anti-skid deck surfaces.
- Bi Fold aft salon door to port.
- Sliding windows in salon on cabin sides.
- Electric opening window in salon aft bulkhead.
- Hinged access door to side deck at helm.
- Flush, outward opening, transom door with latch.
- Anchor locker with slam latch.
- Large lazarette/engine room access hatch in cockpit sole with compression latches.

- **DECK HARDWARE**

- 1 1/4" Diameter type 316 stainless steel perimeter rail system.
- (8) 12" Stainless steel cleats (2 fwd, 4 mid ship, 2 in aft cockpit).
- (1) 10" Stainless steel cleat to starboard of windlass as anchor rode tie off.
- (4) Custom cast stainless steel mid-rail line chocks.
- (2) Custom cast stainless steel skene chocks forward.
- (2) Custom folding stainless steel mooring cleats aft.
- Bow pulpit with dual anchor roller for 44# CQR or Delta type anchors and “lunch hook”.
- Quick anchor windlass, electric rope-chain type.
- Flag staff and socket on taffrail.
- Burgee staff on bow pulpit.
- (6) Low Profile stainless steel hatches w/screens.
- (6) Custom stainless steel opening port lights.
- Teak toe rails.
- Teak cabin side eye-brow.
- Custom cast stainless steel “SABRE” medallion.

- **HELM STATION**

- Cummins DTS single lever electronic controls.
- Cummins Smart Craft display (engine data, tank levels, vessel data, alarms).
- Triple windshield wipers with washers.
- Ritchie Compass.
- Switch controls for horn, running lights, anchor light, engine room blower and optional

equipment.

- Stazo 400mm custom teak steering wheel with tilt helm and Sabre logo.
- Stidd single helm seat with Ultraleather fabric.
- **PROPULSION**
- Twin Cummins QSC 8.3 550 hp electronic, fresh water-cooled
- Twin CMD Zeus 3800 pod drives, with integrated steering and trim
- 120A, 12V alternators each engine.
- (2) Exhaust by-pass mufflers.
- Engine room blower.
- Engine room vent ducts.
- Engine room floor with FRP anti-skid.
- White gelcoated engine room
- Mylar face foam noise barrier.
- **FUEL SYSTEM**
- (2) 250 USG diesel fuel tanks port and starboard.
- Racor fuel filters with water in fuel probes.
- (2) 2" "Diesel" deck fill plates.
- **STEERING and TRIM SYSTEMS**
- CMD helm, with joystick.
- Trim tabs integrated in CMD Zeus pod drives.
- Autopilot integrated in CMD Zeus system.
- "Skyhook" GPS position hold system with dedicated GPS receiver.
- **12VDC ELECTRICAL SYSTEM**
- Two AGM Group 31 dedicated engine start batteries new January 2017
- Three AGM 4D deep cycle ship's service batteries new January 2017
- One AGM Group 24 generator start battery new January 2017
- Remote control battery switches with controls at helm.
- Manual emergency battery crossover switch.
- Illuminated main circuit breaker distribution.
- Digital battery monitor
- High output LED lights in the overhead.
- Halogen bar lighting in appropriate locations.
- Fluorescent engine room lighting.
- Cockpit courtesy lights.
- Marine-grade, tinned wire throughout.
- **120VAC ELECTRICAL SYSTEM**
- Onan 11.5 kw generator
- Interfaced to Cummins Vessel View display
- Dedicated start battery.
- Water lift muffler.
- Cooling water intake strainer.
- Sound shield.
- Transfer switch.
- 50A shore power service with Glendinning Cablemaster & 50 ft. cord.

- Fail safe galvanic isolator.
- Illuminated main circuit breaker distribution panel.
- Digital AC system monitor
- 120V GFCI protected outlets in each cabin and engine room.
- 50amp, 3-bank battery charger
- Reverse cycle heat/ air conditioning in (3) zones.
- **MASTER STATEROOM AMIDSHIPS**
- Spacious island berth athwartship layout with laminated trim.
- Hull side deadlight over head board
- Shoji style passageway and closet doors
- Shoji style portlight screen panels
- Cherry hull ceilings.
- Drawers under berth and in bulkhead aft of berth.
- (2) hanging lockers fore and aft of bed.
- LED flat screen TV and DVD player.
- Teak and holly sole.
- Sound deadening soft headliner panels.
- Pocket door to master head compartment.
- **MASTER HEAD**
- Private access from master stateroom
- Custom tile in WC and shower sole
- Glass vessel style sink
- High gloss finish over solid cherry counter.
- Vanity cabinet below sink
- Storage outboard
- Mirror above vanity, cherry framed
- Separate shower stall with clear bi-fold enclosure and glass tile accent wall within
- Electric shower sump pump
- Opening port to side deck
- Deck hatch with blind/screen overhead
- Ventilation blower
- Stainless steel towel bars
- **GUEST STATEROOM**
- Spacious island berth, with laminated trim.
- Cherry hull ceilings.
- Drawers under berth, A/C return grille beside.
- Storage lockers, drawers and shelves.
- Teak and holly sole.
- Sound deadening soft headliner panels.
- Pocket door to passageway.
- Private access to forward head and shower
- **GUEST HEAD**
- Stainless steel under mount sink.
- Shower stall with seat and locker outboard.

- Hot and cold pressure water
- Electric shower sump pump.
- Storage lockers.
- Solid surface vanity top with bull nose.
- Towel bars
- Soap dispenser
- Cherry wood trimmed mirror over sink.
- Ventilation blower.
- **GALLEY**
- Solid surface galley counter top.
- Stainless steel under mount sink with cover and pull-out faucet
- Stainless steel under mount prep sink with cover.
- Soap dispenser
- Isotherm stainless steel stand-up refrigeration/freezer
- Two burner electric cook top
- Convection microwave with stainless steel face
- Drawers and storage lockers below counter.
- Built-in waste basket and recycle bin below companionway steps.
- **MAIN SALON**
- “L” settee to starboard, 5” foam cushions, with storage and Sabre tool drawer under.
- High Gloss finished table with hi-low pedestal and angled slide mechanism. Lowers to coffee table height.
- Entertainment unit to port including: flat screen LCD TV on lift with DVD player
- Sound deadening, soft headliner panels.
- Raised mates L-shaped settee to port of helm chair
- Stainless steel bi-fold door to cockpit
- Electrically operated window aft of L-settee
- Swing door at helm to starboard side deck
- Deep chart table forward of L-settee
- **DÉCOR**
- Varnished cherry interior finish.
- Screens on opening ports.
- Ocean Air screen/blinds on deck hatches.
- Ocean Air pleated blinds on side windows and side door
- Drapes on aft curved windows
- Dovetailed, varnished maple drawer boxes
- **FRESH WATER SYSTEM**
- Water capacity 160 gals.
- Stainless steel, 20 gal. water heater, operates on 110-VAC or engine heat.
- Temperature control valve on hot water supply.
- Hot and cold water pressure system 12V.
- Fresh water spigot in engine room.
- **WASTE DISPOSAL**
- Polyethylene holding tank with 70 gallon capacity.

- Jabsco Quiet Flush fresh water MSD in guest head
- Tecma Eco MSD in master head
- Diaphragm waste pump on holding tank.
- **SAFETY**
- Dual Kahlenberg chrome trumpet horn with compressor
- Fire extinguishers, (5) at 2 1/2 lbs.
- Marelon sea valves on all thru-hull fittings below waterline.
- Bonding system to safeguard against galvanic corrosion.
- Automatic fire extinguishing discharge system in engine space with override.
- (3) Automatic 12V electric bilge pumps.
- (3) high water switches and alarm

Disclaimer The Company offers the details of this vessel in good faith but cannot guarantee or warrant the accuracy of this information nor warrant the condition of the vessel. A buyer should instruct his agents, or his surveyors, to investigate such details as the buyer desires validated. This vessel is offered subject to prior sale, price change, or withdrawal without notice.

Основная информация

Тип судна: Крейсер

Подкатегория: Downeast

Модельный год: 2012

Год постройки: 2012

Страна: United States

Верх: Hardtop

Кубрик: Да

Размеры

Длина общая: 48' 0" (14.63m)

Ширина: 5' 4" (1.63m)

Макс. осадка: 3' 9" (1.14m)

Скорость, вместимость и масса

Крейс. скорость: 27 Kts. (31 MPH)

Вместимость воды: 160 Gallons

Вместимость сточного бака: 70 Gallons

Объем топливного бака: 525 Gallons

Размещение

Всего кают: 3

Всего коек: 3

Спальные места: 6

Всего ком. состава: 2

Корпус и палуба

Материал корпуса: Fiberglass

Комплектация корпуса: Deep Vee

Цвет корпуса: Flag Blue

Информация о двигателе

Двигатели: 2

Производитель: Cummins

Модель: QSC 8.3L

Тип двигателя: Inboard

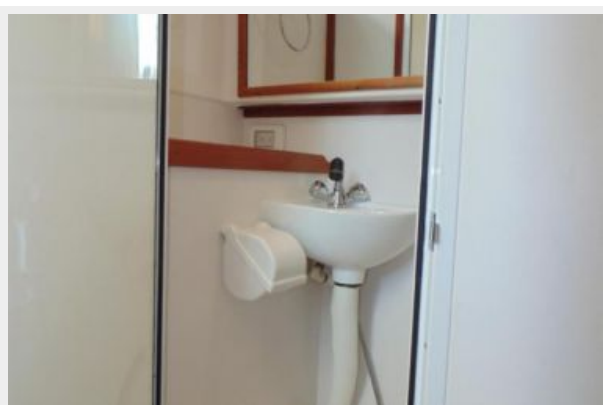
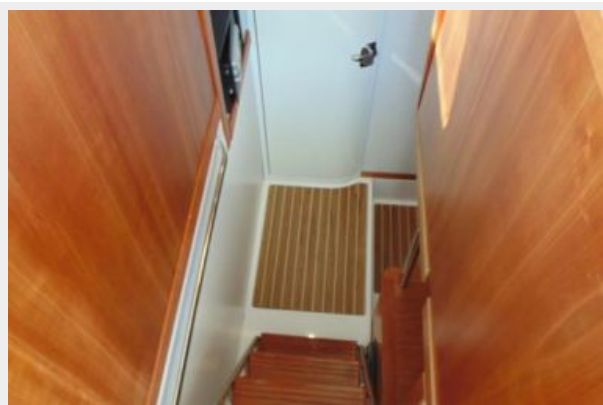
Тип топлива: Diesel

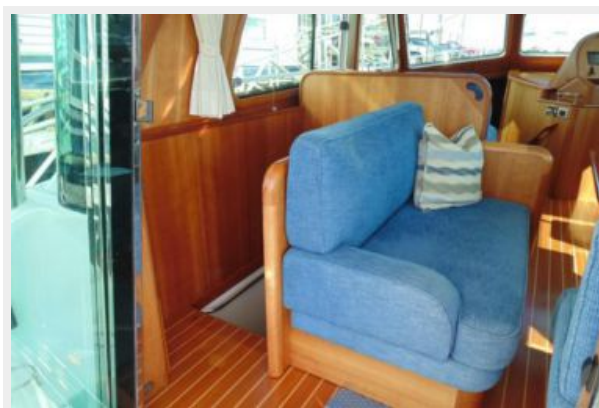
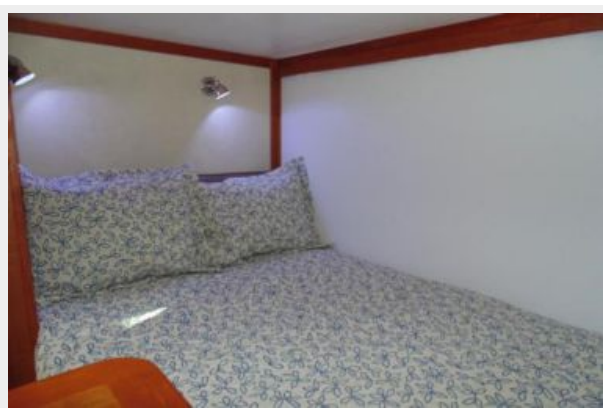
ФОТОГРАФИИ







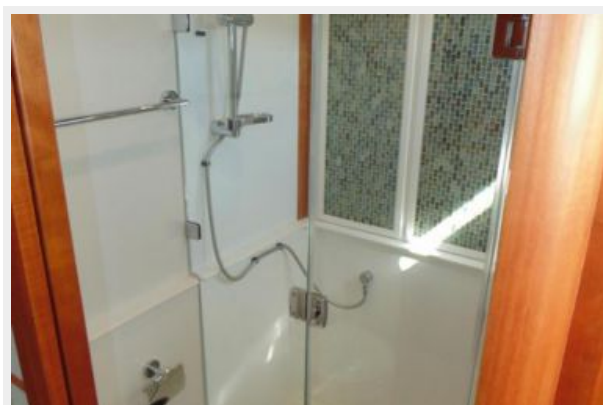
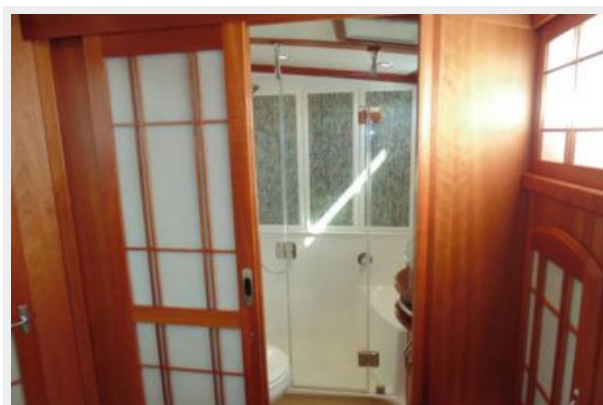
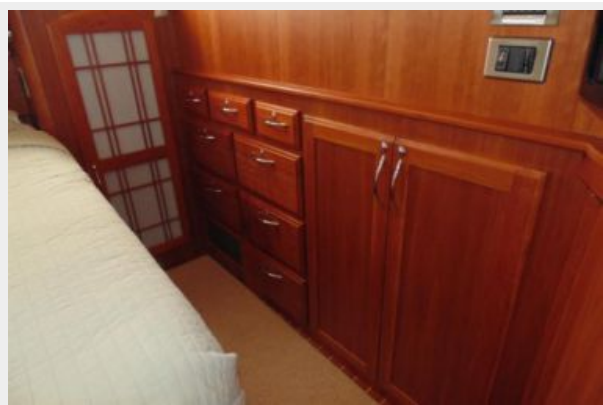


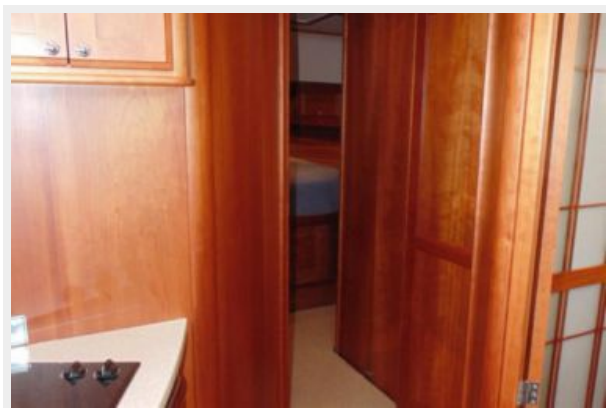


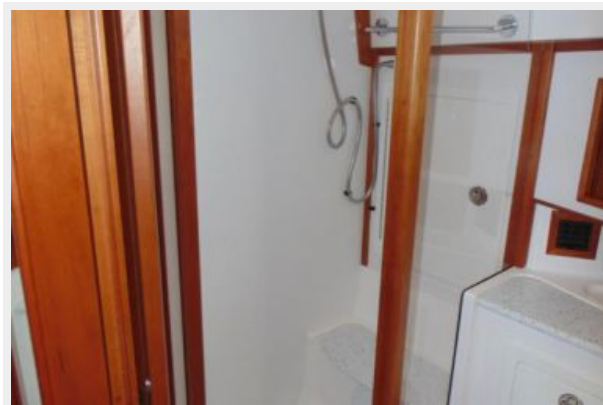
















КОНТАКТЫ

Андрей Шестаков (Andrey Shestakov) – ведущий яхтенный брокер отдела продаж яхт и судов компании Shestakov Yacht Sales Inc. Официальный представитель Shestakov Yacht Sales Inc. для русскоговорящих клиентов в центральном офисе компании в Майами/Форт Лодердейл/Флорида/США.

Контактная информация

Email: andrey@shestakovyachtsales.com

Web: shestakovyachtsales.com

Телефоны

Краснодарский край: **+7(918)465-66-44**

США, Майами, Флорида: **+1(954)274-4435**

Время работы

Понедельник – Суббота: **9:00 - 21:00**
EDT

Воскресенье: **Закрето**

Адрес



Harbour Towne Marina, 850 NE 3rd St,
STE 213, Dania, FL 33004