

SOVEREIGN — ALLOY



Судостроитель: ALLOY

Год постройки: 1995

Модель: Представительская парусная яхта

Цена: **ЦЕНА ЯХТЫ ПО ЗАПРОСУ**

Местонахождение: Spain

Длина общая: 118' 6" (36.12m)

Ширина: 27' 0" (8.23m)

Мин. осадка: 10' 10" (3.30m)

Крейс. скорость: 10 Kts. (12 MPH)

Макс. скорость: 12 Kts. (14 MPH)

Купить **SOVEREIGN — ALLOY** а также выбрать подходящую вам яхту из нашего каталога яхт вам поможет опытный яхтенный брокер Андрей Шестаков. На сегодняшний день компания **Shestakov Yacht Sales Inc.** имеет большое количество яхт в собственном списке продаж, а также тесно сотрудничает со всеми крупными яхтенными производителями по всему миру.

Для того чтобы купить яхту **SOVEREIGN — ALLOY** а также проконсультироваться по любому вопросу связанному с покупкой, продажей, чартером яхт позвоните по телефону **+7(918)465-66-44**.

ОГЛАВЛЕНИЕ

ОГЛАВЛЕНИЕ	2
ХАРАКТЕРИСТИКИ	3
Обзор	3
Основная информация	3
Размеры	3
Скорость, вместимость и масса	3
Размещение	4
Корпус и палуба	4
Информация о двигателе	4
ПОДРОБНОЕ ОПИСАНИЕ	5
Full Specification	5
Исключения	12
Отказ от ответственности	12
ФОТОГРАФИИ	14
КОНТАКТЫ	17
Контактная информация	17
Телефоны	17
Время работы	17
Адрес	17

ХАРАКТЕРИСТИКИ

Обзор

This 36m fast cruising auxiliary sloop was built by the world-renowned Alloy Yachts in New Zealand and launched in 1995.

Like her predecessors, Sovereign is the product of intensive research and testing to ensure excellent performance.

Основная информация

Тип судна: Представительская парусная яхта **Подкатегория:** Sloop

Модельный год: 1995

Год постройки: 1995

Год обновления: 2011

Страна: Spain

Верх: Hardtop

Размеры

Длина общая: 118' 6" (36.12m)

Длина по ватерлинии: 96' 6" (29.41m)

Ширина: 27' 0" (8.23m)

Мин. осадка: 10' 10" (3.30m)

Скорость, вместимость и масса

Крейс. скорость: 10 Kts. (12 MPH)

Дальность на крейсерской скорости: 6700

Макс. скорость: 12 Kts. (14 MPH)

Водоизмещение: 286.6009406 Pounds

Чистый вес: 157 Pounds

Вместимость воды: 1056.688208 Gallons

Вместимость сточного бака: 634.0129248 Gallons

Объем топливного бака: 4755.096936 Gallons

Расход топлива: 5.547613092 Gallons

Размещение

Всего кают: 4

Спальные места: 8

Корпус и палуба

Материал корпуса: Aluminum

Материал палубы: Teak

Дизайнер корпуса: Dubois Naval Architects

Дизайнер интерьера: Redman Whitley Design

Информация о двигателе

Двигатели: 1

Производитель: Luggier

Модель: L6140AL 570hp 6 cylinders

Тип топлива: Diesel

ПОДРОБНОЕ ОПИСАНИЕ

Full Specification

Comments

Sovereign is, in every sense, an ocean thoroughbred, reflecting noble breeding in its lines, performance and exquisite walnut interior. This 36m fast cruising auxiliary sloop was built by the world-renowned Alloy Yachts in New Zealand and launched in 1995.

Like her predecessors, Sovereign is the product of intensive research and testing to ensure excellent performance.

Walk-through - Great attention has been paid to the detailing, with highly sculpted cabinets and carved geometric designs that flow into curved corner posts and dramatic curved doors. The styling is modern and light, while the superbly-executed joinery makes her a timeless masterpiece.

Redman Whitley Design interior has poured thousands of hours into the finishing of Sovereign, using carefully selected burl walnut, the hand-crafted joinery and detailing stand comparison with the very best in the world

Boarding Sovereign via the grand staircase, which opens from the transom, guests progress through the well-appointed cockpit with its custom twin wheels and into a spacious al fresco entertainment area. Access into the low-slung pilothouse is through hydraulic sliding glass doors. The pilothouse profile has been refined to provide even greater visibility when sitting in the upper saloon, and to enhance the vessel's streamlined appearance.

Meals can be enjoyed in three locations: outdoors under the custom deck awning, in the sleek pilothouse with its casual dining and cocktail bar arrangements, or in the formal saloon below where ten guests can be accommodated around a magnificent walnut table with free-standing chairs. A curved staircase leads from the saloon, through a splendid lobby, to the owner's stateroom and three guest suites. Galley and crew quarters, for six, are situated forward.

Hull and Deck Construction

The hull, deck and superstructure is of welded aluminum construction. The yacht is built to ABS Hull Certification.

The cockpit and decks are covered with 16mm quarter-sawn teak planks 55mm wide. Guests can relax in the shade under the covered cockpit, which also provides a wonderful al fresco dining area.

Paint on hull: Awlgrip Superstructure: Aluminium

Keel: Lead/Aluminium Decks: Teak Naval Architect Dubois Naval
Architects Builder: Alloy yachts, New Zealand Internal Designer Redman Whitely
Dixon Displacement: 47 Nett Gross tonnage: 157 GT

ENGINE

Lugger model L6140AL 570hp 6 cylinders Engine hours: 12016 (November 2017) Steering: Dual steering positions in the cockpit have two 48in diameter teak and ash laminated wheels finished with carbon fibre driving a Wagner power-assisted steering system LA-1.83-35.

2 x three phase pumpsets which provide power and can be controlled from the cockpit, autopilot and a hand-held remote control. Propeller: Hundested VP/FR Gearbox: ZF BW165

Maximum speed: 12 knots Cruising speed 10 knots Consumption 21 litres ph (500
Liters/day) Range: 6,700 miles

Fuel Separator Racor 1000 MA Duplex

Propeller Hundested VP 7 FR EL

Hydraulics: Danfoss & Rextroth 2 x PTO's on Generator / 1 x Electric Power Pack

Tankage Fuel: 6 tanks – 2 x service and 4 long range 18,000 litres Fresh
water: 2 tanks 2000 litres each Grey water: 570 litres Black water 570
litres

The black and grey watertanks are fitted into the keel.

MAIN SYSTEMS Bow & Stern thruster: 50hp retractable thruster Water maker: 2 x 1200gpd
W.M.S 5000 litres each/per day Air-conditioning: Aqua-air 144,000BTU reverse cycle unit
supplying 15 air handlers

2 X Rotary VANE Hv02 Air Compressors for pneumatic systems, toilets and rams (for lifting
hatches etc.) Ventilator: Ducted forced ventilation is fitted to the galley and all bathrooms.

Generators: 2 x Northern Light 33kw M1064D 220/380V three-phase, 50HZ

Generator hours: STB – 4517 hrs. / PORT – 4130 hrs. (November 2017)

Consumption: approx.150 liters / per day/each 6 litres/hour each

Batteries: 32 x 12V Sonnenschien gel Toilet system: Microphor Boilers: two 250-litre dual
element hot water cylinders, supplying hot and cold water. Make 60 litres/hour

Sails and Rigging

RIGGING Rig: Mast and boom are constructed of pre-impregnated carbon fibre cured in an autoclave and featuring five sets of carbon fibre spreaders with discontinuous rod rigging. The mainsail is reefed and furled using the in-boom Leisurefurl system. Back stay tension is hydraulically powered.

Masts: Carbon-fibre mast reduces eight aloft, boosting performance and reducing pitching and heeling.

Mast Height from WL – I. 40.10m

J. 13.40m

Boom P. 36.70m

Spinnaker Boom E. 13.10m SAILS Sails by: Doyle Foresails: Genoa
reacher 387 m2 2011 Blade 257 m2 2012 Mainsails 285 m2 2017

Gennaker original, 1995

Winches: All halyard, sheet and runner operations are hydraulically powered.

Captive winches control main, genoa and staysail sheets, plus runners and main halyard.

Two gennaker sheet winches are located on deck aft of the cockpit.

The headsails are controlled by Reckman furlers.

2 x Simpson Lawrence 6000 lb@32ft/min Anchor windlasses

2 x MPS Harken 1120 STHSS on aft deck

2 x Simpson Lawrence CRW 20 Captives for Main Halyard and Main Sheet

6 x Simpson Lawrence CRW 16 Captive winches for Genoa and Staysail Halyards and Sheets and Runners

2 x Reckman Furling Gear for Genoa on Staysail

4 x Harken winches, 2 in pit at base of mast and 2 on foredeck

Electrical Systems

Shore power: European – 380v 3 phase 60hz
phase 60hz

UK – 415v 3

USA – 208v 3 phase 60hz

Navigation & Communication:

Autopilot – Robertson AP45

Compass – Halcyon x 2 magnetic, Robertson RCL50 Gyro

GPS/Plotter – Furuno GP70 MK2

SATNAV – Transas chart plotter software & PC

RADAR – Furuno RF7100/4', SIMRAD RA40C

WEATHER FAX – Furuno FAX208

NAVTEX – 1++300

ECHO SOUNDER – Furuno FCV 581 Colour video sounder

WIND/SPEED b&g Hydra 2 system

RUDDER INDICATOR x 3

VHF – Radiotel

Internet

Emergency Transmitter

CABINS

SOVEREIGN accommodates 8 guests in four luxuriously appointed cabins

Owners Cabin is full width aft with seating area and ensuite bathroom

VIP Cabin is queen size with ensuite

2 x Guest Cabin with ensuite

There is also a day head for guests.

Crew cabin is one double and 2 twin cabins

GALLEY EQUIPMENT

Miele Refrigerator

Deep Freezer – 12 cubic feet floor freezer & 1 x Miele upright freezer

Fridge & Icemaker in the upper saloon

Wine fridge in the upper saloon

Miele microwave

2 x Miele oven with hob and extractor

Miele dishwasher

Miele washing machine

Miele dryer **ENTERTAINMENT**

Pioneer Audio Component system consisting of

1 x VSX D702 Tuner Amplifier

1 x PDI M802 Multi CD Player

2 MR 100P Remote controller

2 x CU AV200 Smart Remote units

1 x AM7 Bose Speaker system

1 x FST Freestyle Speakers

Samsung TV and a Samsung Smart TV in Crew Mess.

Samsung CD

ACCESSORIES

Deck Equipment

Anchors CQR - 190 kg SS + 159 kg – New 2017

Chain: x 2 galvanized 120m 16mm

Passarelle: Multiplex Carbon

Bathing ladder

Shower on deck

Deck-wash system

Awning

Sun Mattresses

Canvas Cover

TENDER AND TOYS

Tender – AB VST 4.50m 50hp Yamaha

2 sets of water ski's

Boogie board

Assorted snorkeling equipment

2 sets of diving bottles and BCG's plus various diving equipment

SAFETY & SECURITY

2 life rafts

13 x life jackets

Distress Flares

EPIRB

2 x Security safe

Low level and high-level sensors in all bilges

3 phase AC fire pump and CO2 suppression system in engine room

All cabins, lazarette, engine room, galley and salon have fire extinguishers.

REFIT HISTORY

2011 – STP Palma

Hull and Superstructure repainted

Installation of 2 new generators

Overhaul of Bow & Stern thrusters

New Bimini cover

New Reacher Doyle sail

Varnished all exterior wood

Service on all main systems

New Anchor & Chains

New Sheets & Halyards

Replaced many areas of teak on the deck

New Main engine & generator exhaust

New Main engine lifting box

New inlet pipes in ER

Complete service on Propeller

Complete service of shaft, bearing and stern tube

Grey & Black tanks cleaned

New rudder bearing

2012/13

New AC/Heating system

New Blade sail

Replaced 2 x Hydraulic Motors on the Mast winches

2013/14

Hydraulic hoses replaced in garage

All captive winches serviced and hoses replaced

New PLC installed with VCAM

New Galley Fridge

2014/15

2 new fresh water pumps

Transom painted

Replace Blade sheets

Reconditioned 3 x captive winches

2015/16

Wall & Ceiling panels replaced in Master Cabin, Passageway and Lower Saloon

New Pneumatic lifting rams installed

2016/17

New Main Sail

2 x Air compressor for Pneumatic Systems

2 x PTO pumps complete service

Hydraulic Oil replaced

Исключения

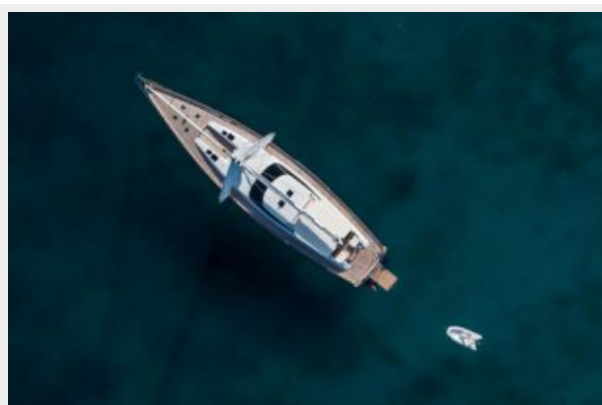
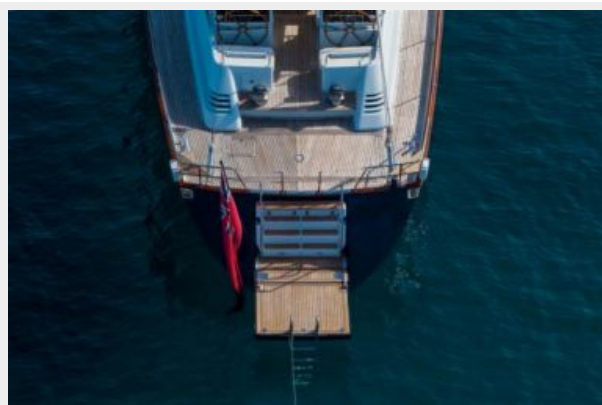
При продаже яхты исключаются личные вещи владельца.

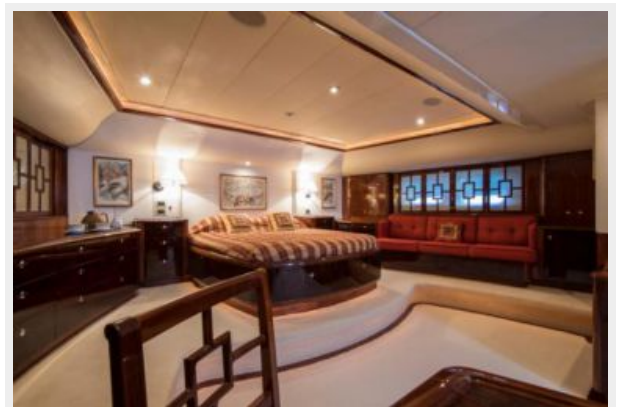
Отказ от ответственности

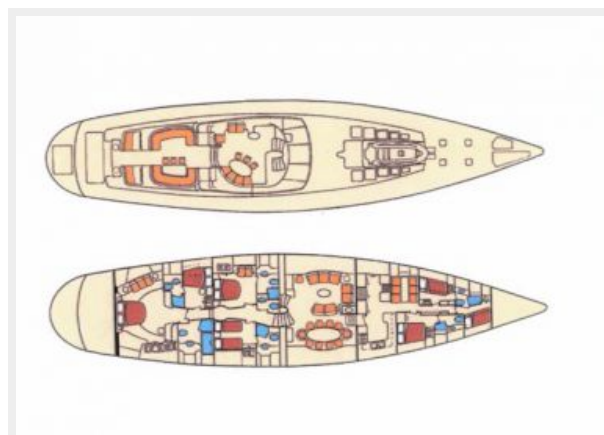
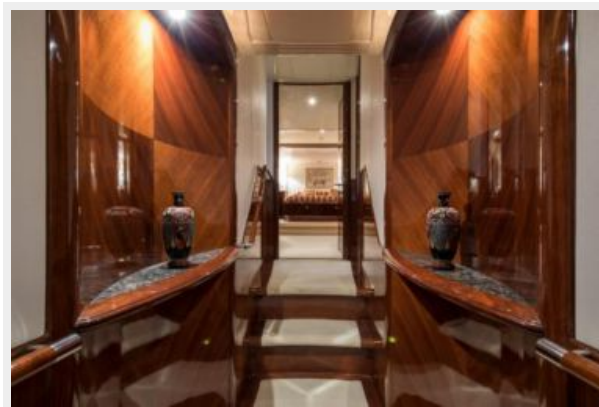
Компания предоставляет описание судна или яхты добросовестно, но не может гарантировать точность этой информации, а также не ручается за техническое состояние. Покупатель должен проинструктировать своих агентов или оценщиков исследовать представленную информацию более подробно, по собственному желанию. Продажа судна или яхты, изменение цены или снятие с продажи будет происходить без

предварительного уведомления.

ФОТОГРАФИИ







КОНТАКТЫ

Андрей Шестаков (Andrey Shestakov) – ведущий яхтенный брокер отдела продаж яхт и судов компании Shestakov Yacht Sales Inc. Официальный представитель Shestakov Yacht Sales Inc. для русскоговорящих клиентов в центральном офисе компании в Майами/Форт Лодердейл/Флорида/США.

Контактная информация

Email: andrey@shestakovyachtsales.com

Web: shestakovyachtsales.com

Телефоны

Краснодарский край: **+7(918)465-66-44**

США, Майами, Флорида: **+1(954)274-4435**

Время работы

Понедельник – Суббота: **9:00 - 21:00**
EDT

Воскресенье: **Закрито**

Адрес



Harbour Towne Marina, 850 NE 3rd St,
STE 213, Dania, FL 33004