

MERENGUE — CABO



Builder: CABO

Year Built: 2002

Model: Motor Yacht

Price: PRICE ON APPLICATION

Location: United States

LOA: 35' 0" (10.67m)

Beam: 13' 0" (3.96m)

Min Draft: 2' 10" (0.86m)

Max Draft: 3' 0" (0.91m)

Cruise Speed: 24 Kts. (28 MPH)

Max Speed: 28 Kts. (32 MPH)

Our experienced yacht broker, Andrey Shestakov, will help you choose and buy a yacht that best suits your needs **MERENGUE — CABO** from our catalogue. Presently, at Shestakov Yacht Sales Inc., we have a wide variety of yachts available on our sale's list. We also work in close contact with all the big yacht manufacturers from all over the world.

If you would like to buy a yacht **MERENGUE — CABO** or would like help answering any questions concerning purchasing, selling or chartering a yacht, please call **+1(954)274-4435**

TABLE OF CONTENTS

TABLE OF CONTENTS	2
SPECIFICATIONS	4
Basic Information	4
Dimensions	4
Speed, Capacities and Weight	4
Accommodations	4
Hull and Deck Information	5
Engine Information	5
DETAILED INFORMATION	6
Preliminary Specifications	6
Accommodations	6
Salon	6
Galley	6
Head	7
Deck	7
Helm and Electronics	7
Tower Station	8
Fishing Equipment	8
Electrical	8
Engine Details	9
Exclusions	9
Exclusions	9
Disclaimer	9
PHOTOS	10
Cabin	10
Cabin Seating / Dinette	10
Galley	10
Galley / Queen Bunk	10

Head	10
Queen Bunk	10
Head	11
Bow	11
Cockpit	11
Cockpit	11
Tower	11
Release Fighting Chair	11
Tower	12
Helm	12
Helm	12
Helm	12
Engine Room	12
Flybridge Seating	12
Engine Room	13
Engine Room	13
Engine Room	13
Engine Room	13
CONTACTS	14
Contact details	14
Telephones	14
Office hours	14
Address	14

SPECIFICATIONS

Basic Information

Category: Motor Yacht

Sub Category: Express

Model Year: 2003

Year Built: 2002

Country: United States

Coast Guard #: 1132207

Vessel Top: Hardtop W/Tower

Dimensions

LOA: 35' 0" (10.67m)

Beam: 13' 0" (3.96m)

Min Draft: 2' 10" (0.86m)

Max Draft: 3' 0" (0.91m)

Speed, Capacities and Weight

Cruise Speed: 24 Kts. (28 MPH)

Cruise Speed Range: 350

Max Speed: 28 Kts. (32 MPH)

Max Speed Range: 400 Kts.

Displacement: 20000 Pounds

Gross Tonnage: 20 Pounds

Water Capacity: 100 Gallons

Holding Tank: 16 Gallons

Fuel Capacity: 420 Gallons

Accommodations

Total Cabins: 1

Sleeps: 4

Total Heads: 1

Hull and Deck Information

Hull Material: Fiberglass

Hull Configuration: Modified V-Hull

Hull Color: White

Engine Information

Engines: 2

Manufacturer: Caterpillar

Model: 3126B

Engine Type: Inboard

Fuel Type: Diesel

DETAILED INFORMATION

Preliminary Specifications

This Company offers the details of this vessel in good faith but cannot guarantee or warrant the accuracy of this information nor warrant the condition of the vessel. A buyer should instruct his agents, or his surveyors, to investigate such details as the buyer desires validated. This vessel is offered subject to prior sale, price change, or withdrawal without notice. ***PHOTOS WILL BE PROCESSED AT A LATER DATE***

Accommodations

Introduced in 1993, the Cabo Express is a top-level sport fishing machine whose impeccable detailing, superior engineering, and rugged construction made her one of the most popular boats in her class. Constructed on a modified-V hull with a relatively wide beam and a shallow keel, the hull was updated in 2000 with a finer entry to provide a softer ride and improved head-sea performance. Cabin headroom is excellent and the décor is very upscale for a fishing boat. The cockpit is big for a 35-footer and came standard with a bait-prep center, transom door, two in-deck storage boxes, deck wash-downs and plenty of rod storage. An L-shaped settee is opposite the helm. The entire bridge deck lifts for access to the engine room. Merengue is in excellent condition with very low engine hours 950 +/- . The bottom was repainted in 2016. Engines have a full after cooler upgrade.

Salon

- L-shaped convertible sofa with storage below
- Teak & Holly flooring
- Removable cabin carpet runner
- Stereo: Am/FM/CD/DVD/Sirius Radio
- Satin Honey Teak trim & doors
- Flat Screen TV
- Teak Dinette Table
- Rod Storage in Upper Cabinetry
- Overhead opening hatch

Galley

- Mid to Port
- Refrigerator & separate freezer under counter
- Stainless sink with hot & cold pressure water

- 2 burner electric stove w/cover
- Corian counter top
- Microwave/convection oven
- Abundant storage

Head

- Aft to Port
- Vacuflush Toilet
- Separate stall shower
- Rod storage
- Vanity cabinet
- Opening port

Deck

- Release Marine teak picnic table
- Boat levelers trim tabs
- Bow pulpit with roller
- Electric anchor windlass
- Spare anchor
- Bow railing
- Full marlin tower with fiberglass hardtop & second station
- Icemaker at helm
- Coaming pads
- Courtesy lights cockpit
- Flood lights
- Transom door & gate
- Full enclosure
- Fresh & saltwater wash downs
- 3-bilge pumps w/ auto switches
- 6 person life raft mounted on hardtop
- FCI Aquamiser + Watermaker (400 gpd)

Helm and Electronics

- Furuno NavNet color GPS, chart plotter, sounder & radar
- EPIRB
- Compass
- VHF radio
- Simrad Auto-Pilot

- Glendinning Electronic Binnacle Controls
- Hydraulic steering
- Glassed panel over engine instruments
- Emergency shut down controls
- Battery parallel switch
- Remote windlass controls
- Double helm seat
- Foot rest
- Fire & high water alarms

Tower Station

- Glendinning Controls
- Hydraulic Steering
- Compass
- Cover for helm
- Hard top
- Furuno port sounder
- Simrad marine auto-pilot
- Helm seat with backrest, console cover

Fishing Equipment

- Marlin tower
- Release Marine fighting chair
- Rupp single spreader outriggers with back bars
- 6-rocket launcher rod holders
- 4-lockable tackle drawers
- Bait prep station w/sink
- 40 gallon live well at transom
- 2-large insulated fish boxes in deck cockpit
- 5-flush mounted rod holders
- Dive ladder
- Rod storage under gunnels behind doors
- 12 volt deep drop dedicated outlet

Electrical

- 120 volt AC system w/shore power cords
- 12 volt DC system
- 5-12V batteries house & engine (new in 2016)

- Battery switches
- Smart charger
- 5 KW Westerbeke generator

Engine Details

- Twin Caterpillar Diesel Engines MDL 3126b with approximately 1,000 total hours, 450 HP each (new aftercooler upgrades on both engines)
- ZF MDL 280A gears
- Freshwater cooled engines
- Pans plumbed for oil changes with oil change pump
- Racor primary fuel filters w/vacuum gauges
- Emergency bilge/crash pump
- Power actuated engine room hatch
- Four-bladed bronze propellers 22x24
- Three-bladed spare props mounted inside bulkhead
- New driplless shaft log seals
- Automatic engine room fire extinguishing system
- High water alarm
- Manufacturer's spare engine and generator part kits
- 1 3/4" shafts

Exclusions

Exclusions are to include but are not limited to owner's personal belongings. A detailed list of exclusions to be presented to Buyer upon written notification at time of sale.

Exclusions

Owner's personal belongings.

Disclaimer

The Company offers the details of this vessel or yacht in good faith but cannot guarantee or warrant the accuracy of this information nor warrant the condition of the vessel. A buyer should instruct his representatives, agents, or his surveyors, to investigate such details as the buyer desires validated. This vessel or yacht is offered subject to prior sale, price change, or withdrawal without notice.

PHOTOS

Cabin



Cabin Seating / Dinette



Galley



Galley / Queen Bunk



Queen Bunk



Head



Head



Bow



Cockpit



Cockpit



Tower



Release Fighting Chair



Tower



Helm



Helm



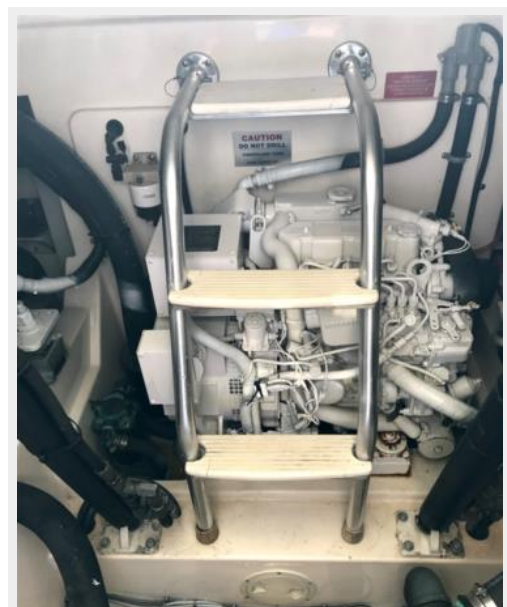
Helm



Flybridge Seating



Engine Room



Engine Room



Engine Room



Engine Room



Engine Room



CONTACTS

Andrey Shestakov, leading yacht broker of the sales department of Shestakov Yacht Sales Inc. Shestakov Yacht Sales Inc., the official representative of the Miami/Fort Lauderdale FL headquarters.

Contact details

Email: andrey@shestakovyachtsales.com

Web: shestakovyachtsales.com/en/

Telephones

USA: +1(954)274-4435

Office hours

Monday – Saturday: **9:00 - 21:00** EDT

Sunday: **closed**

Address



Harbour Towne Marina, 850 NE 3rd St,
STE 213, Dania, FL 33004