

37FT 2007 INTREPID 370 CUDDY — INTREPID



Builder: INTREPID

Year Built: 2007

Model: Center Console

Price: PRICE ON APPLICATION

Location: United States

LOA: 37' 0" (11.28m)

Beam: 10' 6" (3.20m)

Max Draft: 3' 2" (0.97m)

Cruise Speed: 35 Kts. (40 MPH)

Max Speed: 55 Kts. (63 MPH)

Our experienced yacht broker, Andrey Shestakov, will help you choose and buy a yacht that best suits your needs 37ft 2007 Intrepid 370 Cuddy — INTREPID from our catalogue. Presently, at Shestakov Yacht Sales Inc., we have a wide variety of yachts available on our sale's list. We also work in close contact with all the big yacht manufacturers from all over the world.

If you would like to buy a yacht 37ft 2007 Intrepid 370 Cuddy — INTREPID or would like help answering any questions concerning purchasing, selling or chartering a yacht, please call +1(954)274-4435

TABLE OF CONTENTS

TABLE OF CONTENTS	2
SPECIFICATIONS	4
Overview	4
Basic Information	4
Dimensions	4
Speed, Capacities and Weight	5
Accommodations	5
Hull and Deck Information	5
Engine Information	5
DETAILED INFORMATION	6
Cockpit/Transom	6
Helm/Fwd Seating/Arch	6
Cabin	7
Exclusions	7
Disclaimer	7
PHOTOS	8
Bow Running	8
Aft Running	8
Removable Bench Seating, 2016 Yamaha 300's	8
Aerial Running	8
Dive Door	8
Cockpit Looking Forward	8
Helm Seating	9
Helm	9
Stbd Cooler	9
Electronics	9
Forward Seating	9
Teak Table	9

Seating	10
Cabin Looking Aft	10
Fridge, Sink, Microwave, etc.	10
Head	10
Forward Seating	10
Bow	10
Windlass	11
Radar, Outriggers, Search light, etc.	11
Cowling Covers	11
Removeable Seating Covers	11
Helm Chair/Electronics Covers	11
Forward Seating Covers	11
Kohler Generator	12
Bilge	12
Radar	12
GPS	12
Depth	12
Profile Running Stbd	12
CONTACTS	13
Contact details	13
Telephones	13
Office hours	13
Address	13

SPECIFICATIONS

Overview

REPOWERED WITH *TRIPLE 2016 300HP Yamahas!*

This is a great opportunity to own a **REPOWERED** Intrepid 370 Cuddy that is in excellent condition with plenty of options. Her owner is moving and cannot take the boat along.

She is currently dry-stored at Haulover. Offers strongly encouraged --- call the central listing broker to schedule a showing.

Key Features Include:

- Triple 2016 Yamaha F300s (145hrs) with 6yr Extended Warranty
- Dive Door
- Removable Bench Seating
- Radar, Autopilot, Bow Thruster, Windlass (w/ SS Delta Anchor)
- Additional 50 gal. Fuel Tan
- Teak Table for U-Shaped Seating

Other Updates in 2016:

- New Batteries
- Raymarine E120 Screens Replaced/Upgraded
- New Upholstery: Sunpad, Helm, Bench Seat, and Cooler Cushion
- Custom Cockpit Sunshade

DYSID:3142845

Basic Information

Category: Center Console

Model Year: 2007

Year Built: 2007

Country: United States

Dimensions

LOA: 37' 0" (11.28m)

Beam: 10' 6" (3.20m)

Max Draft: 3' 2" (0.97m)

Speed, Capacities and Weight

Cruise Speed: 35 Kts. (40 MPH)

Max Speed: 55 Kts. (63 MPH)

Displacement: 11000 Pounds

Water Capacity: 40 Gallons

Holding Tank: 10 Gallons

Fuel Capacity: 350 Gallons

Accommodations

Total Cabins: 1

Total Heads: 1

Hull and Deck Information

Hull Material: Fiberglass

Engine Information

Engines: 2

Manufacturer: Yamaha

Model: F300

Engine Type: Outboard

Fuel Type: Gas/Petrol

DETAILED INFORMATION

Cockpit/Transom

- **Triple 2016 Yamaha 300HP 4 Strokes (145hrs) w/ *Extended 6 Year Warranty***
- Dive Door (Fold-Out)
- Removable Bench Seating
- JL Audio Speakers
- Pop-Up Cleats
- 6x Rod Holders
- Kohler 5kW Gas Generator (430hrs) Under Center Hatch
- Fishbox to Port
- Storage to Stbd
- Fresh/Saltwater Washdown
- Rod Storage under gunwhale
- Tackle Storage behind Helm Seat (4x Rodholders; 4x Cupholders)
- Custom Cockpit Shade

Helm/Fwd Seating/Arch

Helm

- 2x Raymarine E120s (GPS, Radar, Depth Sounder) Replaced w/ Larger Units in 2016
- Yamaha Engine Gauge
- Clarion Stereo
- Simrad AP26 Autopilot
- Vetus Bowthruster Control
- Windlass Control
- ACR Spotlight Pad
- ICOM VHF IC-M506
- Bennett Trim Tab Controls
- Fiberglass Cooler Stbd of Console

- Fiberglass Seat w/ Electric Control Fore & Aft

Forward Seating

- Pull Out Filler to Sun Pad
- Removable Teak Table
- Storage under Seating
- Access to batteries and wiring inside console

Arch

- 4x Rodholders
- Raymarine Open Array Radar
- Spotlight
- Lee Outriggers

Bow

- Lofrans Windlass
- Sunpad Cushions (re-upholstered in 2016)

Cabin

- Jabsco Head to Stbd w/ Sink and Storage
- Galley to port with Isotherm Fridge, Microwave, and SS Sink Basin
- Stereo
- Jensen TV
- Rod Storage
- Marine Air Conditioning 6,000BTU
- Generator Controls

Exclusions

Owner's personal belongings.

Disclaimer

The Company offers the details of this vessel or yacht in good faith but cannot guarantee or warrant the accuracy of this information nor warrant the condition of the vessel. A buyer should instruct his representatives, agents, or his surveyors, to investigate such details as the buyer desires validated. This vessel or yacht is offered subject to prior sale, price change, or withdrawal without notice.

PHOTOS

Bow Running



Aft Running



Aerial Running



Removable Bench Seating, 2016 Yamaha 300's



Dive Door



Cockpit Looking Forward



Helm Seating



Helm



Stbd Cooler



Electronics



Forward Seating



Teak Table



Seating



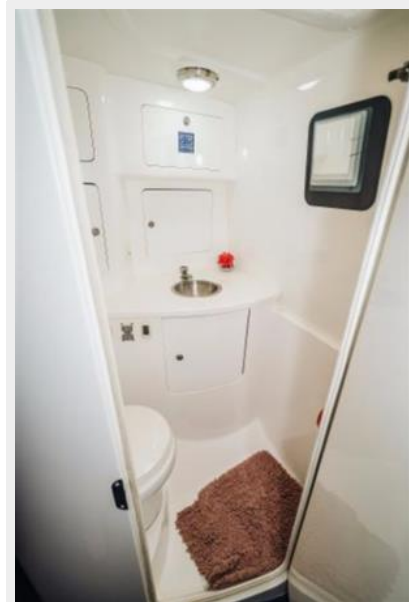
Cabin Looking Aft



Fridge, Sink, Microwave, etc.



Head



Forward Seating



Bow



Windlass



Radar, Outriggers, Search light, etc.



Cowling Covers



Removeable Seating Covers



Helm Chair/Electronics Covers



Forward Seating Covers



Kohler Generator



Bilge



Radar



GPS



Depth



Profile Running Stbd



CONTACTS

Andrey Shestakov, leading yacht broker of the sales department of Shestakov Yacht Sales Inc. Shestakov Yacht Sales Inc., the official representative of the Miami/Fort Lauderdale FL headquarters.

Contact details

Email: andrey@shestakovyachtsales.com

Web: shestakovyachtsales.com/en/

Telephones

USA: +1(954)274-4435

Office hours

Monday – Saturday: **9:00 - 21:00** EDT

Sunday: **closed**

Address



Harbour Towne Marina, 850 NE 3rd St,
STE 213, Dania, FL 33004