

NONE — ISLAND PACKET YACHTS



Судостроитель:
ISLAND PACKET YACHTS

Год постройки: 2001

Модель: Cutter

Цена: ЦЕНА ЯХТЫ ПО ЗАПРОСУ

Местонахождение: United States

Длина общая: 38' 0" (11.58m)

Ширина: 13' 2" (4.01m)

Макс. осадка: 4' 7" (1.40m)

Купить None — ISLAND PACKET YACHTS а также выбрать подходящую вам яхту из нашего каталога яхт вам поможет опытный яхтенный брокер Андрей Шестаков. На сегодняшний день компания Shestakov Yacht Sales Inc. имеет большое количество яхт в собственном списке продаж, а также тесно сотрудничает со всеми крупными яхтенными производителями по всему миру.

Для того чтобы купить яхту None — ISLAND PACKET YACHTS а также проконсультироваться по любому вопросу связанному с покупкой, продажей, чартером яхт позвоните по телефону **+7(918)465-66-44**.

ОГЛАВЛЕНИЕ

ОГЛАВЛЕНИЕ	2
ХАРАКТЕРИСТИКИ	3
Обзор	3
Основная информация	7
Размеры	7
Скорость, вместимость и масса	7
Размещение	7
Корпус и палуба	7
Информация о двигателе	8
ФОТОГРАФИИ	9
КОНТАКТЫ	16
Контактная информация	16
Телефоны	16
Время работы	16
Адрес	16

ХАРАКТЕРИСТИКИ

Обзор

The Island Packet 380 has proven to be a popular model, she is spacious for long stays but still small enough to go out for a weekend. The owner of this boat has continually given her upgrades, from a recent enclosure to new Garmin electronics and new sails. Over the last several years she has lightly cruised the coast of Maine. This is a boat that, upon your first step aboard you will immediately know just how well she has been lovingly cared for. Electronics

- NEW Garmin 7212 Touch screen GPS Plotter
- Garmin Color Radar HD Radome
- Raytheon ST60 TriData
- Standard Horizon Floating Marine Transceiver with GPS Model HX851
- Raytheon ST60 Wind
- Raytheon ST6000+ Autopilot
- Jensen CD/Stereo Player

Accommodations

Description of layout from forward:

Forward Cabin

- Large Double Centerline Island Berth
- Full Length Teak Shelves
- Cedar-Lined Hanging Locker(s) with Shelf Over
- (2) Bureaus w/ Shelf Over
- Privacy Doors to Salon and Head

Head

- Privacy doors from Master Stateroom and Salon
- Deep, Oval Stainless Steel Sink
- Hot/Cold Pressurized Water
- Overhead Hatch
- Opening Port
- Fold-Down Shower Seat
- Full Length Mirror
- Shower Enclosure

Salon

- Pull-Out Double Settee (Port)
- Single Settee (Starboard)
- Teak Cabinets and Bookshelves
- Stowage behind and Below Settees
- Cedar Lined Hanging Locker with Shelf Over
- Deluxe Drop-Leaf Table (Folds against Bulkhead Rack)
- Teak and Holly Sole
- Large Overhead Hatch
- Deck Vents
- Overhead Handrails
- Navigation Station with Table
- Master AC/DC Electrical Panels
- Chart Stowage

Galley

- New (2013) Force 10 Gourmet Galley Range Model 63351 Propane, Gimbale 3 Burner Stainless Steel Stove/Oven
- Top-Loading Refrigerator and Freezer
- Double Stainless Steel Sinks
- Hot/Cold Pressurized Water
- Teak Sea Rails
- Spray Nozzle
- manual Pump
- Microwave Oven
- Trash Bin (retractable)
- Shelves, Lockers and Drawers
- Watts water filter

Guest Stateroom

- Large Double Bed
- Dressing Seat
- Hide-Away Sink with Hot/Cold Water
- Cedar-Lined Hanging Locker
- Bureau with Shelf Over

Sail and Rigging

- North Sails Furling Genoa 2015
- North Sails Furling Staysail
- Furling Mainsail Northsails **** NEW 2016****
- Cutter Rigged
- Charleston Mast with roller furling main, Harken self furlers for genny and staysail.

- 110 percent roller furling high clew jib
- Genoa gear, including tracks, blocks, sheets and Harken furling system
- Staysail gear, including blocks, halyard, Lewmar Ocean Series 8C staysail sheet winch, Harken furling system and Hoyt self-vanging boom
- Staysail halyard winch on mast - Lewmar Ocean Series 8C
- Jib halyard winch on mast - Lewmar Ocean Series 24C 2-speed
- Main halyard (on roller bearing masthead sheave) and main sheet, led to cockpit through stoppers to Lewmar Ocean Series 30CST winch
- All halyards internal; color coded running rigging, convenient coaming storage bins for lines
- Boom Vang - preventer package
- Winch handle - 10" lock-in chrome - Lewmar "PowerGrip" - Jib sheet winches (2) Lewmar Ocean Series 48CST 2-speed - Midboom sheeting for unobstructed cockpit & dodger installations - Main sheet traveler w- 4:1 control system
- Sobstad - Mainsail cover, jib and staysail sun panels in green Sunbrella

Deck gear

- Stainless Steel two rail bow pulpit
- Stainless Steel Stern Rail Pulpit
- Cockpit Cushions
- NEW 2014 complete enclosure with Strataglass dodger, complete Bimini with enclosure. This is an absolutely beautiful setup!!
- Cockpit Line Bags
- Transom Mounted Boarding Ladder
- Emergency Tiller
- FRP Cockpit Fold-Down Table
- Cockpit Shower
- Dorade Vents - Polished Stainless Steel with Sail Protectors
- Pair Stainless Steel Dinghy Davits
- Assorted Fenders and Docklines
- Seat Lockers
- (1) ROCNA 20lb Plow Anchor
- (1) 45lb CQR
- Anchor Windlass - 12v DC
- LED spreader lights(2014)

Engine

- Yanmar 4 cylinder Inboard Direct Drive Diesel
- 56 HP
- Freshwater Cooled
- 1925 Hours
- 85 Gallon Aluminum Fuel Tank
- Racor fuel filter system

Electrical System

- 12 Volt DC System
- 120V Panel w/ Volt gauge
- (5) AGM LifeLine Batteries (4 House and 1 Engine/Start)
- (2) Battery Selector Switches
- Balmar 100 Amp Alternator
- Circuit Breaker Switch Panels
- Shore Power

Safety Equipment

- (3) Portable Fire Extinguishers
- (1) Transom Mounted Boarding Ladder for Unassisted Boarding
- (1) Emergency Tiller
- (1) Xintex S-2A LPG/CNG Detector/Control System
- (1) Xintex Fireboy CO Alarm
- (1) Universal Fire/Smoke Alarm
- (3) Compressed Air Horns
- "Hookknife" Emergency Line Cutter
- (1) Life Sling Overboard Rescue System
- (1) Horseshoe Buoy
- (1) Mast Mounted Echomax Radar Reflector
- Achilles RIB Model HB300FX 9'10" (2011) Inflatable on Davits

Disclaimer The Company offers the details of this vessel in good faith but cannot guarantee or warrant the accuracy of this information nor warrant the condition of the vessel. A buyer should instruct his agents, or his surveyors, to investigate such details as the buyer desires validated. This vessel is offered subject to prior sale, price change, or withdrawal without notice.

Основная информация

Тип судна: Cutter

Подкатегория: Крейсерская яхта

Модельный год: 2001

Год постройки: 2001

Страна: United States

Размеры

Длина общая: 38' 0" (11.58m)

Ширина: 13' 2" (4.01m)

Макс. осадка: 4' 7" (1.40m)

Скорость, вместимость и масса

Водоизмещение: 21000 Pounds

Вместимость воды: 170 Gallons

Вместимость сточного бака: 40 Gallons

Объем топливного бака: 85 Gallons

Размещение

Всего кают: 2

Всего коек: 7

Всего ком. состава: 1

Корпус и палуба

Материал корпуса: Fiberglass

Материал палубы: Fiberglass

Комплектация корпуса: Long Keel

Цвет корпуса: Cream

Информация о двигателе

Двигатели: 1

Производитель: Yanmar

Модель: 4JH2BE

Тип двигателя: Inboard

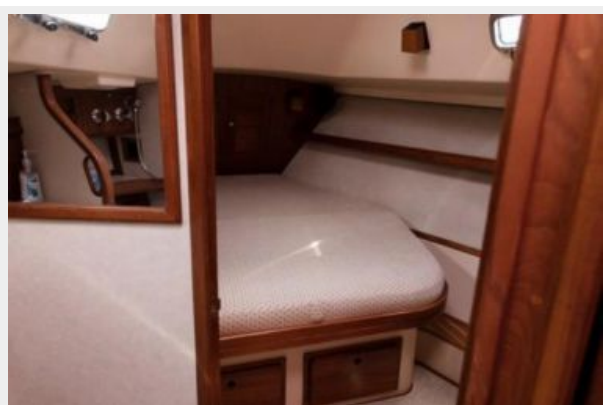
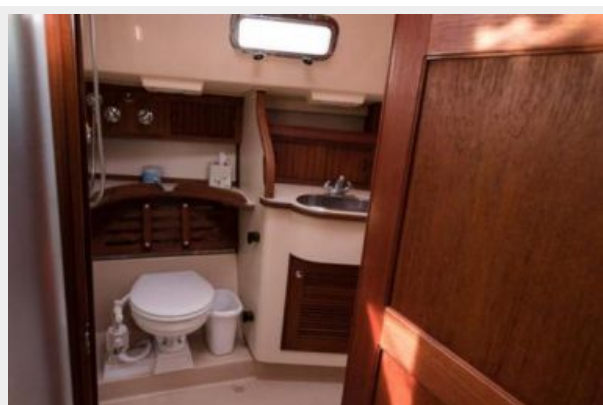
Тип топлива: Diesel

ФОТОГРАФИИ

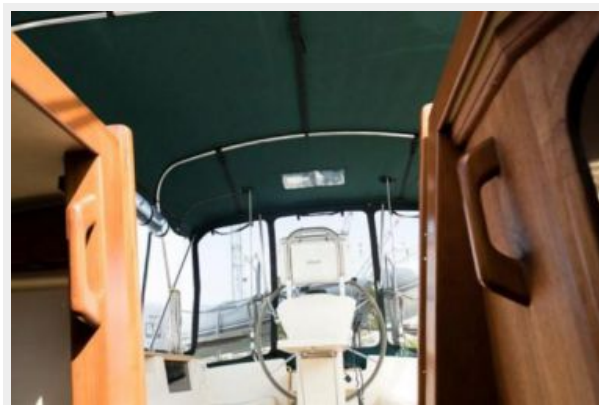














КОНТАКТЫ

Андрей Шестаков (Andrey Shestakov) – ведущий яхтенный брокер отдела продаж яхт и судов компании Shestakov Yacht Sales Inc. Официальный представитель Shestakov Yacht Sales Inc. для русскоговорящих клиентов в центральном офисе компании в Майами/Форт Лодердейл/Флорида/США.

Контактная информация

Email: andrey@shestakovyachtsales.com

Web: shestakovyachtsales.com

Телефоны

Краснодарский край: **+7(918)465-66-44**

США, Майами, Флорида: **+1(954)274-4435**

Время работы

Понедельник – Суббота: **9:00 - 21:00**
EDT

Воскресенье: **Закрито**

Адрес



Harbour Towne Marina, 850 NE 3rd St,
STE 213, Dania, FL 33004