

NO NAME — SEA RAY



Builder: SEA RAY

Year Built: 1997

Model: Cruiser

Price: PRICE ON APPLICATION

Location: United States

LOA: 37' 0" (11.28m)

Beam: 14' 2" (4.32m)

Min Draft: 3' 3" (0.99m)

Max Draft: 3' 3" (0.99m)

Our experienced yacht broker, Andrey Shestakov, will help you choose and buy a yacht that best suits your needs **No Name — SEA RAY** from our catalogue. Presently, at Shestakov Yacht Sales Inc., we have a wide variety of yachts available on our sale's list. We also work in close contact with all the big yacht manufacturers from all over the world.

If you would like to buy a yacht **No Name — SEA RAY** or would like help answering any questions concerning purchasing, selling or chartering a yacht, please call **+1(954)274-4435**

TABLE OF CONTENTS

TABLE OF CONTENTS	2
SPECIFICATIONS	3
Overview	3
Basic Information	3
Dimensions	3
Speed, Capacities and Weight	4
Accommodations	4
Hull and Deck Information	4
Engine Information	4
DETAILED INFORMATION	5
key features	5
Exclusions	5
Disclaimer	5
PHOTOS	7
CONTACTS	15
Contact details	15
Telephones	15
Office hours	15
Address	15

SPECIFICATIONS

Overview

MOTIVATED SELLER.....JUST REDUCED 10K! With only 525 original hours, this has to be the lowest hour diesel 370EC available. Her cockpit has been modernized with new custom upholstery and dash surrounds. She has new canvas along with a new stainless steel ice maker. Down below the additions of a new stainless steel refrigerator / freezer and wood flooring are very welcome.

The 370 Express Cruiser was an effort by Sea Ray to develop a serious, tournament-level fishing boat. In that regard, she followed the approach Tiara so successfully pioneered with their 3600 and 3700 Open models - a top quality express with a big, well - designed cockpit and a lavish, family-friendly interior. This Sea Ray is a big boat thanks to wide 14' -2" beam. The 370's engine room is reached via a centerline hatch, and for complete access the bridge sole can be raised at a push of a button. This feature make maintenance a breeze. Unlike most Sea Rays of this vintage the hull on the 37' is solid fiberglass and not cored. She can sleep four adults in two separate berths and has a shower stall in the head. This is the only Sea Ray made with a keel and therefore she can run down sea at slow speeds without the need to over steer. Great Bahamas cruiser.

Basic Information

Category: Cruiser

Sub Category: Express

Model Year: 1997

Year Built: 1997

Country: United States

Vessel Top: Bimini Top

Cockpit: Yes

Dimensions

LOA: 37' 0" (11.28m)

Beam: 14' 2" (4.32m)

Min Draft: 3' 3" (0.99m)

Max Draft: 3' 3" (0.99m)

Speed, Capacities and Weight

Displacement: 18000 Pounds

Water Capacity: 70 Gallons

Holding Tank: 28 Gallons

Fuel Capacity: 350 Gallons

Accommodations

Total Cabins: 2

Total Heads: 1

Hull and Deck Information

Hull Material: Fiberglass

Hull Color: White

Engine Information

Engines: 2

Manufacturer: Caterpillar

Model: 3116TA

Engine Type: Inboard

Fuel Type: Diesel

DETAILED INFORMATION

key features

The Sea Ray 370 Express Cruiser has a wide-open dual-level cockpit design, raised bridgedeck, and wide 14 ft 2 inch beam to provide a dry and safe ride. 3116TA CAT power, combined with a 350 gallon fuel capacity, that means it can go anywhere, and quickly. On the bridgedeck, a power adjustable helm seat, and portside double helm seat with aft-facing seat provide the captain and guests with a view and comfort. The captain also has full command of a host of technical and safety features like a Raytheon electronics package, high water bilge pumps and alarm, plus a digital LCD systems monitor for engine diagnostics and pump monitoring. Even the dash itself has a tan gelcoat with rich burl wood accents. If fishing is the order of the day, the lower deck area features a large insulated in-floor fish box with hinged lids and pump-out to hold a sizable catch. There are four rod holders and a foldaway aft seat in the cockpit area to allow extra room for battling game when needed. The Sea Ray 370 Express Cruiser even has an entertainment center that also functions as a bait prep station with wetbar, sink, cooler, cutting board, freezer and convenient trash receptacle. Below, the cabin offers an amazing amount of storage space and room for four adults to relax without feeling cramped. The forward stateroom has a full-size bed, plenty of mirrored storage areas, and a standard entertainment center with a TV/VCR/Radio combination. In the dinette-salon area the convertible dinette can be used for sleeping space by simply stowing the table in its dedicated compartment. The list of standard features also includes granite-look countertops, deep-pile, marine-grade carpet, handcrafted wood trim, and even a AM-FM digital cassette stereo with six-disc CD changer, amplifier, subwoofer, eight speakers, and a cockpit remote control. All extra gear is neatly hidden in the salon floor compartment with fold-down rod racks. The stylish galley on the 370 Express Cruiser boasts beautiful cabinetry and includes a flush-mounted two-burner electric stove, refrigerator, microwave, coffee maker, fiberglass countertop with Corian cutting board, and Grohe faucet. In the head area, there's a VacuFlush head with fiberglass settee, Corian vanity top, sink and storage, as well as a fiberglass shower with sliding curved acrylic door. The 370 Express Cruiser comes with an air conditioning and heating system, emergency start, windlass, fiberglass swim platform, Sunbrella Bimini top with boot, and vertical top storage. And for peace of mind, the 370 Express Cruiser has a remote start generator with muffler, plus an electric cockpit sole that raises the entire upper cockpit area for fast, easy engine access when needed.

Exclusions

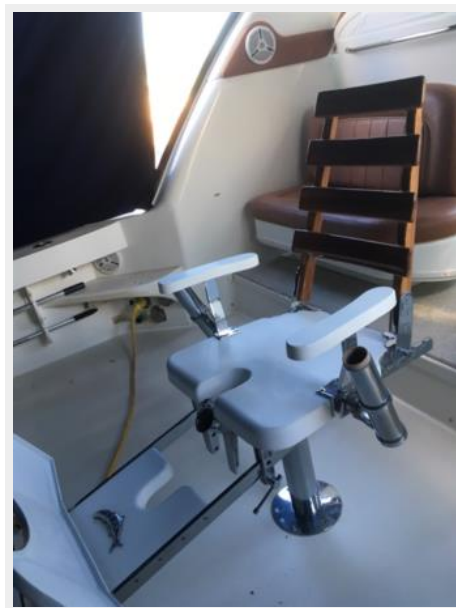
Owner's personal belongings.

Disclaimer

The Company offers the details of this vessel or yacht in good faith but cannot guarantee or warrant the accuracy of this information nor warrant the condition of the vessel. A buyer should

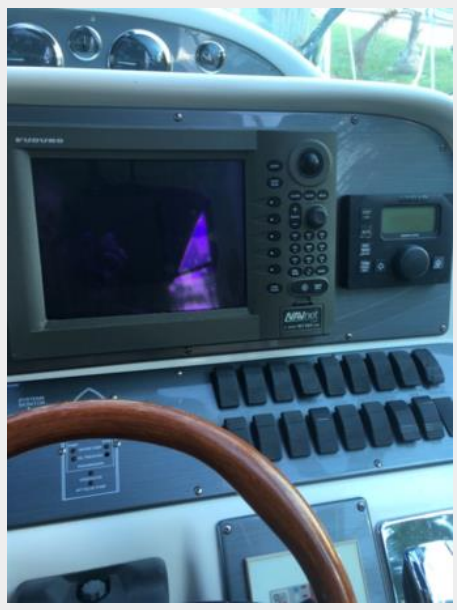
instruct his representatives, agents, or his surveyors, to investigate such details as the buyer desires validated. This vessel or yacht is offered subject to prior sale, price change, or withdrawal without notice.

PHOTOS



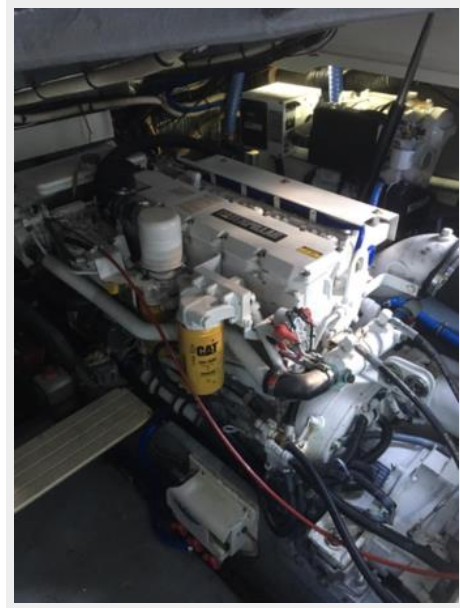














CONTACTS

Andrey Shestakov, leading yacht broker of the sales department of Shestakov Yacht Sales Inc. Shestakov Yacht Sales Inc., the official representative of the Miami/Fort Lauderdale FL headquarters.

Contact details

Email: andrey@shestakovyachtsales.com

Web: shestakovyachtsales.com/en/

Telephones

USA: +1(954)274-4435

Office hours

Monday – Saturday: **9:00 - 21:00** EDT

Sunday: **closed**

Address



Harbour Towne Marina, 850 NE 3rd St,
STE 213, Dania, FL 33004