

## ELENA QUEEN OF ARTS — CUSTOM BUILT



**Builder:** CUSTOM BUILT

**Year Built:** 1982

**Model:** Houseboat

**Price:** PRICE ON APPLICATION

**Location:** United States

**LOA:** 79' 0" (24.08m)

**Beam:** 26' 0" (7.92m)

**Max Draft:** 4' 9" (1.45m)

**Cruise Speed:** 6 Kts. (7 MPH)

Our experienced yacht broker, Andrey Shestakov, will help you choose and buy a yacht that best suits your needs **Elena Queen of Arts — CUSTOM BUILT** from our catalogue. Presently, at Shestakov Yacht Sales Inc., we have a wide variety of yachts available on our sale's list. We also work in close contact with all the big yacht manufacturers from all over the world.

If you would like to buy a yacht **Elena Queen of Arts — CUSTOM BUILT** or would like help answering any questions concerning purchasing, selling or chartering a yacht, please call **+1(954)274-4435**

# TABLE OF CONTENTS

TABLE OF CONTENTS	2
SPECIFICATIONS	4
Overview	4
Basic Information	4
Dimensions	4
Speed, Capacities and Weight	4
Accommodations	5
Hull and Deck Information	5
DETAILED INFORMATION	6
Vessel Walkthrough	6
Deck	6
Main Deck	7
Salon	7
Galley	7
Lower Level	8
Master Stateroom	8
VIP Stateroom	8
Guest Stateroom	8
Engine and Mechanical Details	9
Electrical	9
Broker's Comments	9
Exclusions	9
Disclaimer	9
PHOTOS	10
CONTACTS	17
Contact details	17
Telephones	17
Office hours	17

Address	17
---------	----

# SPECIFICATIONS

## Overview

Unique opportunity to own a one-of-a-kind privately owned, self-propelled stern-wheeler, river boat replica house barge. Timeless appealing classic meets function and luxury. “Elena Queen of Arts” boasts an open & airy layout throughout. Well-appointed with 3 staterooms, 2.5 heads & captains berth, large galley, salon, dinette, library, laundry room, bow seating areas, large upper deck with hot tub, custom woodwork throughout and so much more. Some features include, Young Chang grand piano, projector screen, custom carpentry, cast iron propane fireplaces, coffered ceilings, granite countertops, radiant heat, large sliding windows, 4 entryways, recessed lighting, and many other custom features. Her drivetrain is powered by a pair of 250hp Detroit Diesel 6-71 Naturals with PTO driven counter-rotating stern wheels, dual Detroit Diesel 4-71 40kW 3 phase generators, diesel fed boiler, hydraulic dual action cylinders operating a quad rudder system and pneumatic throttle controls. “Elena Queen of Arts” was commissioned for the late owner of Aflac Insurance John Amos and built by AC McLeod with design cues to replicate the famous Delta Queen. She would make for an excellent waterfront home, floating hotel, B&B or crew vessel. She must be seen to appreciate, call today to schedule your showing. THIS VESSEL MUST BE SEEN TO BE FULLY APPRECIATED.

## Basic Information

Category: Houseboat	Model Year: 1982
Year Built: 1982	Country: United States

## Dimensions

LOA: 79' 0" (24.08m)	Beam: 26' 0" (7.92m)
Max Draft: 4' 9" (1.45m)	

## Speed, Capacities and Weight

Cruise Speed: 6 Kts. (7 MPH)	Water Capacity: 6000 Gallons
Holding Tank: 1000 Gallons	Fuel Capacity: 1000 Gallons

---

## Accommodations

---

**Total Cabins:** 3

---

## Hull and Deck Information

---

**Hull Material:** Steel

---

# DETAILED INFORMATION

---

## Vessel Walkthrough

---

Upon entry via one of her 5 entry doors, the “WOW” factor is sure to hit you. The main entry point is via the port bow, where a double-door opens to the mudroom. The lower level features custom carpentry, carpeted sole, three staterooms, two full heads, large library/den, laundry room and engine room access. A well-appointed staircase leads to the main deck.

Her main deck feels like you're in a posh condo that's ready to entertain, with the grand piano, wraparound couch, and large sliding windows lining the exterior. Custom carpentry throughout. Superb headroom, large galley, and fireplace provides excellent ambiance. The living room area is equipped with a retractable projector screen that provides excellent viewing for any event of your choice. Her upper deck is accessed via the stern stairway.

The upper deck features a large hot tub and enormous open deck layout which provides versatility to be easily setup per event. The pilothouse features a leather sofa with a pullout bed for the captain. **THIS VESSEL MUST BE SEEN TO BE FULLY APPRECIATED.**

## Deck

---

- Tri Deck
- Steel Superstructure
- 5 Entry Points
- Teak Toe Rails
- Wrought Iron Railings (Forward)
- Large Sliding Windows Throughout
- Large Upper Deck
- Capstan

### UPPER DECK:

- Large Open Deck Layout
- Wheelhouse
- Dual Storage Lockers
- Hot Tub

### WHEELHOUSE:

- Large Wooden Wheel
- Sofa with Pullout Berth
- 360 degree views

---

## Main Deck

---

- Galley
- Salon
- Dinette
- Music Room
- Sitting Area
- Day Head
- Aft & Forward Deck Access
- Radiant Heat Throughout
- Large Sliding Windows

---

## Salon

---

- Open & Airy Layout
- L-Shaped Couch
- Library
- Dream Vision Projector with Retractable Screen
- Dinette
- Fireplace
- Carpeted Sole
- Recessed Lighting
- Grand Piano
- Sliding Windows
- Access Doors to Bow
- Sitting Area
- Stairs to Lower Level
- Custom Carpentry

---

## Galley

---

- Cherry & Maple Sole
- Granite Countertops
- L-Shaped Nook
- Stainless Double Sink
- Concealed Pantry
- Stainless Appliances
- Dacor Oven
- Jenn-Aire Refrigerator / Freezer
- Frigidaire Dishwasher
- Eclipse Stove
- Electric Stove

- Day Head Access

---

## Lower Level

---

- French Door Entry
- Tiled Mudroom
- Custom Carpentry Throughout
- Den with Fireplace and Library
- Staterooms (3)
- Heads (2)
- Laundry Room
- Engine Room Access
- Carpeted Sole
- Radiant Heat Throughout
- Ample Storage Throughout

---

## Master Stateroom

---

- French Door Entry
- Queen Size Island Berth
- Large Closet with Mirrored Sliding Doors
- Overhead Fan
- Recessed Lighting
- Storage Lockers

---

## VIP Stateroom

---

- Raised Full Berth with Storage Below
- Large Closet
- Carpeting Throughout
- Wood Paneled Blinds
- Ample Storage

---

## Guest Stateroom

---

- Lower Full Berth
- Closet
- Carpeting Throughout



---

## Engine and Mechanical Details

---

- Detroit Diesel 6-71 Naturals with PTO for Paddles
- Quad Rudder System
- Water Tight Engine Room Bulkhead
- Diesel Boiler System
- Pneumatic Engine Controls

---

## Electrical

---

- Detroit Diesel 4-71 40kw Gensets (2)
- 50 Amp Service
- Windlass
- Lighting Throughout

---

## Broker's Comments

---

The art presently on board does not convey in the sale and is for staging purposes only.

---

## Exclusions

---

Owner's personal belongings.

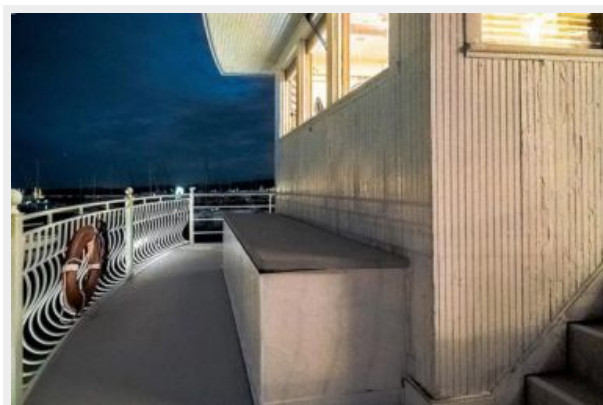
---

## Disclaimer

---

The Company offers the details of this vessel or yacht in good faith but cannot guarantee or warrant the accuracy of this information nor warrant the condition of the vessel. A buyer should instruct his representatives, agents, or his surveyors, to investigate such details as the buyer desires validated. This vessel or yacht is offered subject to prior sale, price change, or withdrawal without notice.

## PHOTOS



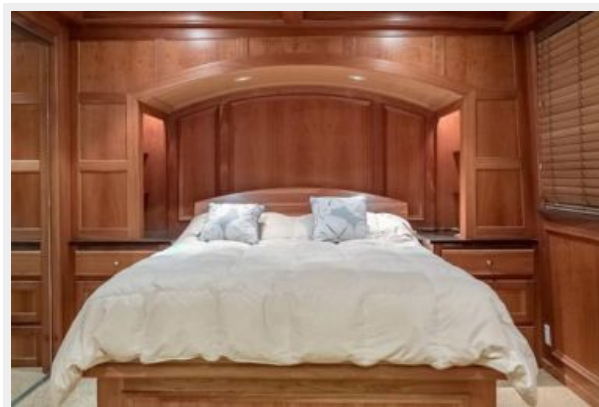
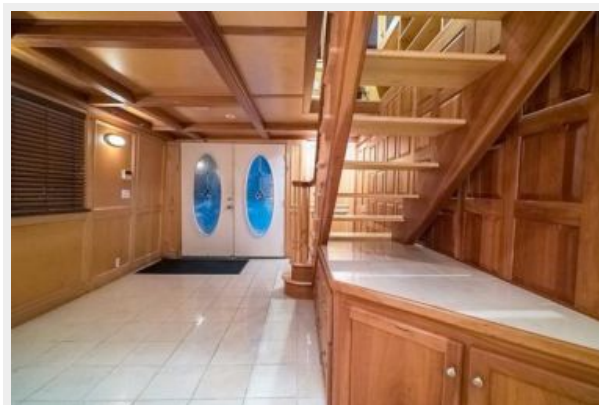




















# CONTACTS

---

Andrey Shestakov, leading yacht broker of the sales department of Shestakov Yacht Sales Inc. Shestakov Yacht Sales Inc., the official representative of the Miami/Fort Lauderdale FL headquarters.

## Contact details

---

Email: **andrey@shestakovyachtsales.com**

Web: [shestakovyachtsales.com/en/](http://shestakovyachtsales.com/en/)

## Telephones

---

USA: **+1(954)274-4435**

## Office hours

---

Monday – Saturday: **9:00 - 21:00 EDT**

Sunday: **closed**

## Address

---



Harbour Towne Marina, 850 NE 3rd St,  
STE 213, Dania, FL 33004