

CAPRICE I — CUSTOM



Builder: CUSTOM

LOA: 52' (15.85m)

Model: Cruising/Racing Sailboat

Max Draft: 6' 9" (2.06m)

Our experienced yacht broker, Andrey Shestakov, will help you choose and buy a yacht that best suits your needs **Caprice I — CUSTOM** from our catalogue. Presently, at Shestakov Yacht Sales Inc., we have a wide variety of yachts available on our sale's list. We also work in close contact with all the big yacht manufacturers from all over the world.

If you would like to buy a yacht **Caprice I — CUSTOM** or would like help answering any questions concerning purchasing, selling or chartering a yacht, please call **+1(954)274-4435**

TABLE OF CONTENTS

TABLE OF CONTENTS	2
SPECIFICATIONS	3
Overview	3
Basic Information	3
Dimensions	4
Accommodations	4
Hull and Deck Information	4
Engine Information	4
PHOTOS	5
CONTACTS	13
Contact details	13
Telephones	13
Office hours	13
Address	13

SPECIFICATIONS

Overview

- Caprice is a custom built Eivind Still design built in Finland by PG Yachts. Similar to a Baltic and Swans built in the same area by the same craftsmen. Originally commissioned for the chairman of Kone Elevators, who was an avid sailor, the build cost was \$1.5m. VAT was paid. Second owner imported it into the US and she was USCG documented. Currently Australian flagged but has the US duty paid.
- Performance oriented with luxury accommodations.
- Strong construction with Kevlar laminate with Dywidag and balsa cored hull. Construction diagrams show heavy stringers and specific solid glass areas on bottom and stress points. Water ballast system to recommission.
- Carbon fiber mast and boom, Rod rigging reheaded and all new running rigging installed. New running back stays and inner stay.
- Electric winches and hydraulic vang make her easy to handle.
- 7 sail inventory.
- Caprice has received numerous updates this year in preparation of an long ocean voyage.
- Upgrades include: Standing rod rigging reheaded and fully tuned
- New running backstays and inner stay 2017
- Most new running rigging
- Mast painted
- Engine serviced, Turbos rebuilt, new yanmar heat exchanger, rebuilt coolers, rebuilt injectors, new exhaust hoses
- New Racors for both engine and generator
- Service Hydraulic system
- Bottom given 3 coats barrier coat and 3 coats hard bottom paint
- Water ballast system
- Removed retractable bowthruster
- New dodger and infill canvas
- New Wabesto 16k btu reverse cycle air conditioner 2017
- Lazerette built out for maximum storage
- Pur 35 Watermaker to install
- West Marine gift card for \$2700 to apply to new electronics
- 6 man Liferaft 2016

Basic Information

Category: Cruising/Racing Sailboat

Sub Category: Cruising Sailboat

Model Year: 1996

Dimensions

LOA: 52' (15.85mm)

LWL: 42' 6" (12.95mm)

Max Draft: 6' 9" (2.06mm)

Accommodations

Total Cabins: 3

Sleeps: 8

Total Heads: 2

Hull and Deck Information

Hull Material: FRP

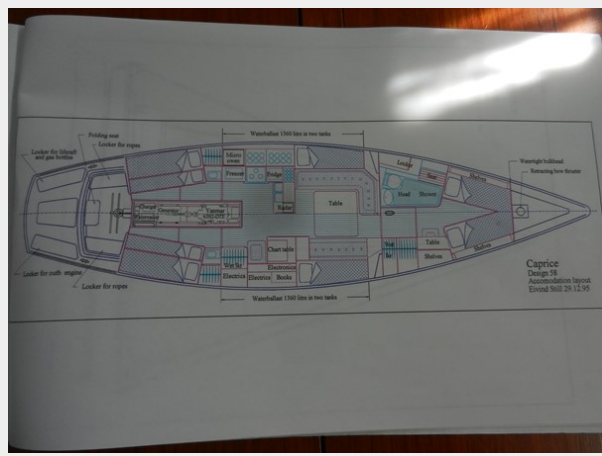
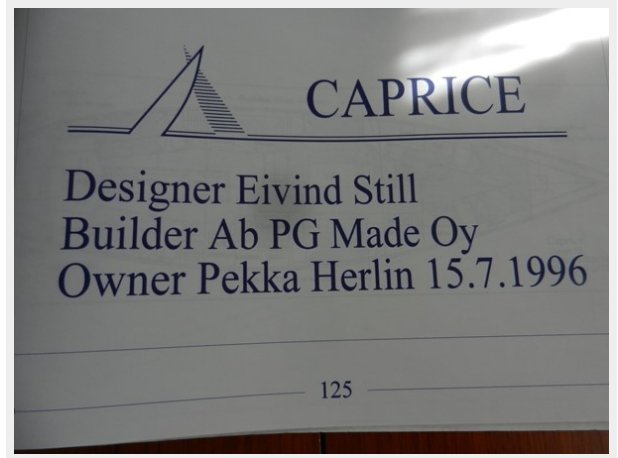
Engine Information

Engines: 1

Manufacturer: Yanmar

Fuel Type: Diesel

PHOTOS

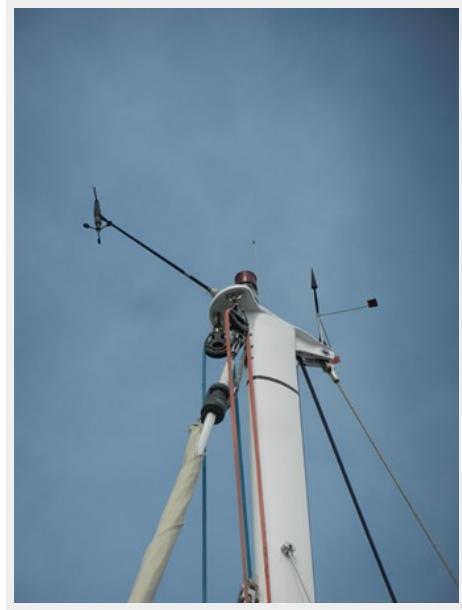


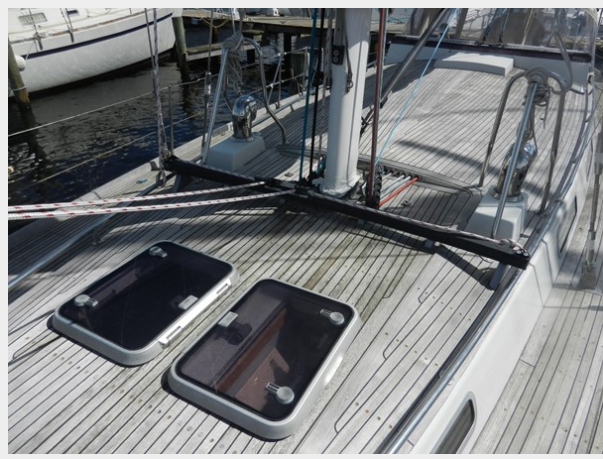














CONTACTS

Andrey Shestakov, leading yacht broker of the sales department of Shestakov Yacht Sales Inc. Shestakov Yacht Sales Inc., the official representative of the Miami/Fort Lauderdale FL headquarters.

Contact details

Email: andrey@shestakovyachtsales.com

Web: shestakovyachtsales.com/en/

Telephones

USA: +1(954)274-4435

Office hours

Monday – Saturday: **9:00 - 21:00** EDT

Sunday: **closed**

Address



Harbour Towne Marina, 850 NE 3rd St,
STE 213, Dania, FL 33004