

SOUTH WIND — ISLAND PACKET YACHTS



Builder: ISLAND PACKET YACHTS

Year Built: 1990

Model: Cruising Sailboat

Price: PRICE ON APPLICATION

Location: United States

LOA: 32' 0" (9.75m)

Beam: 11' 5" (3.48m)

Max Draft: 4' 3" (1.30m)

Our experienced yacht broker, Andrey Shestakov, will help you choose and buy a yacht that best suits your needs **South Wind — ISLAND PACKET YACHTS** from our catalogue. Presently, at Shestakov Yacht Sales Inc., we have a wide variety of yachts available on our sale's list. We also work in close contact with all the big yacht manufacturers from all over the world.

If you would like to buy a yacht **South Wind — ISLAND PACKET YACHTS** or would like help answering any questions concerning purchasing, selling or chartering a yacht, please call **+1(954)274-4435**

TABLE OF CONTENTS

TABLE OF CONTENTS	2
SPECIFICATIONS	3
Overview	3
Basic Information	5
Dimensions	5
Speed, Capacities and Weight	5
Accommodations	5
Hull and Deck Information	5
Engine Information	6
PHOTOS	7
CONTACTS	10
Contact details	10
Telephones	10
Office hours	10
Address	10

SPECIFICATIONS

Overview

'South Wind' is one of the ever popular Bob Johnson design. Built from 1990 to 1995, this super cruiser has the feel and space of a much larger vessel. With accommodations to sleep 7, standing headroom throughout, enormous storage, and shallow 4'3" draft, this well built vessel is an ideal coastal cruiser. With a modified full keel and a large keel supported rudder, Island Packets are known for their sea-kindly motion and their ability to handle a seaway when the seas pipe up.

New water tank in 2013.

Dimensions

- LOA: 32' 4"
- LWL: 28' 5"
- Beam: 11' 5"
- Draft: 4' 3"
- Displacement: 12,900
- Ballast: 5950
- Keel: Full
- Ballast Type: Lead
- Designer: Robert K. Johnson

Engine

- Engine Make: Yanmar
- Engine Type: Diesel Inboard
- Engine Model: 3GM30F
- Engine HP: 27
- Engine Hours: 1,531
- Engine Prop: 15"x11" Three Blade Bronze

Electronics

- Chart Plotter: Garmin, new in 2009
- Radar: Furuno Pole Mounted on Backstay New in 2005
- Auto Pilot: Raymarine 4000 With Remote
- Instruments: Data Marine, Wind, Speed and Depth

Sails and Rigging

- Mainsail New in 2003 With Two Full and Two Partial Battens
- Harken Roller Furling on Two Headsails

- Boomvang

Galley

- Large U Shaped Galley With Loads of Storage
- Double S/S sink
- Dish Rack
- Frige-O-Matic Refrigeration
- Hot and Cold Pressure Water
- Hide Away Trash Bin
- Electric and Engine Hot Water

Recent Upgrades

- Aluminum Potable Water Tank New in 2013
- Two Group 31 and One Group 24 Starting Battery All New in 2017
- Hot Water Heater 5gal New in 2015
- Teak & Holly Sole New in 2013
- 12V Potable Water Pump New in 2016
- Horseshoe Life Sling New in 2005
- Dodger With Removable Side Panels and Roll Up Front Window New in 2015
- Mainsail Cover New in 2014
- Berth and Cabin Cushions Reconditioned in 2009
- Cockpit Bimini With Clear Rain Shield New in 2008
- Life Lines New in 2008

Miscellaneous Gear

- Two Full Life Line Harnesses
- Windlass
- Two Anchors, 1 Delta Plow and 1 Danforth
- Docklines and Fenders
- Hinged Cockpit Table with Cover
- Magma Propane Grill
- Signal Flag Set
- Wind Scoop
- 4 Type II Life Vest
- 8 Type I Life Vest
- 2 25' 30amp Shore Cords
- Spare Prop
- Radar Reflector
- Led Anchor Light

Disclaimer

The Company offers the details of this vessel in good faith but cannot guarantee or warrant the

accuracy of this information nor warrant the condition of the vessel. A buyer should instruct his agents, or his surveyors, to investigate such details as the buyer desires validated. This vessel is offered subject to prior sale, price change, or withdrawal without notice.

Basic Information

Category: Cruising Sailboat

Sub Category: Cutter

Model Year: 1990

Year Built: 1990

Country: United States

Dimensions

LOA: 32' 0" (9.75m)

LWL: 28' 5" (8.66m)

Beam: 11' 5" (3.48m)

Max Draft: 4' 3" (1.30m)

Speed, Capacities and Weight

Displacement: 12900 Pounds

Accommodations

Total Cabins: 1

Total Berths: 3

Sleeps: 4

Total Heads: 1

Hull and Deck Information

Hull Material: Fiberglass

Deck Material: Fiberglass

Hull Configuration: Long Keel

Hull Color: Beige

Engine Information

Engines: 1

Manufacturer: Yanmar

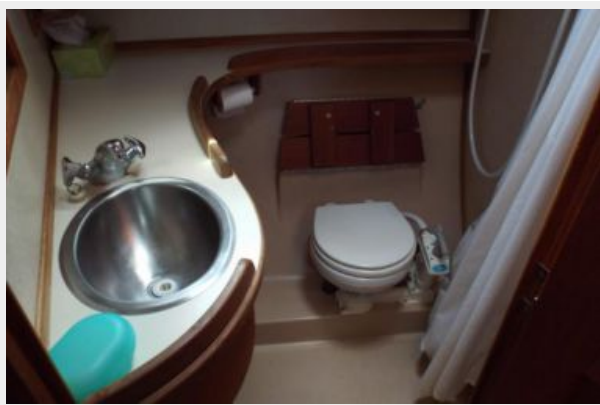
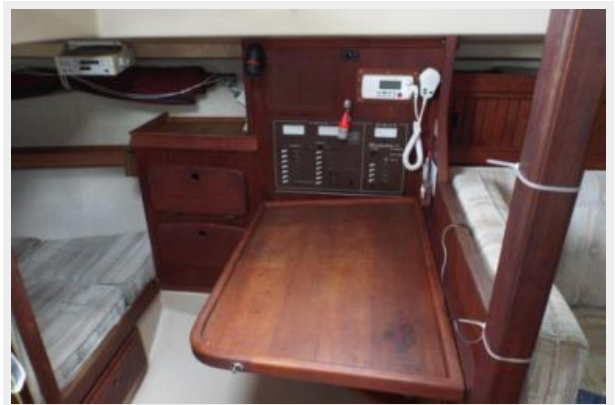
Model: 3GM30F

Engine Type: Inboard

Fuel Type: Diesel

PHOTOS







CONTACTS

Andrey Shestakov, leading yacht broker of the sales department of Shestakov Yacht Sales Inc. Shestakov Yacht Sales Inc., the official representative of the Miami/Fort Lauderdale FL headquarters.

Contact details

Email: andrey@shestakovyachtsales.com

Web: shestakovyachtsales.com/en/

Telephones

USA: +1(954)274-4435

Office hours

Monday – Saturday: **9:00 - 21:00** EDT

Sunday: **closed**

Address



Harbour Towne Marina, 850 NE 3rd St,
STE 213, Dania, FL 33004