

SPECIAL TALENTS — SEA RAY



Builder: SEA RAY

Year Built: 1999

Model: Cruiser

Price: PRICE ON APPLICATION

Location: United States

LOA: 56' 0" (17.07m)

Beam: 16' 0" (4.88m)

Max Draft: 4' 6" (1.37m)

Our experienced yacht broker, Andrey Shestakov, will help you choose and buy a yacht that best suits your needs **SPECIAL TALENTS — SEA RAY** from our catalogue. Presently, at Shestakov Yacht Sales Inc., we have a wide variety of yachts available on our sale's list. We also work in close contact with all the big yacht manufacturers from all over the world.

If you would like to buy a yacht **SPECIAL TALENTS — SEA RAY** or would like help answering any questions concerning purchasing, selling or chartering a yacht, please call **+1(954)274-4435**

TABLE OF CONTENTS

TABLE OF CONTENTS	2
SPECIFICATIONS	5
Overview	5
Basic Information	6
Dimensions	6
Speed, Capacities and Weight	6
Accommodations	6
Hull and Deck Information	6
Engine Information	7
DETAILED INFORMATION	8
Salon	8
Galley	8
Master Stateroom	8
VIP Stateroom, Starboard	9
Guest Port Stateroom	9
Flybridge	9
Electrical & Navigational Equipment	10
Electrical System	10
Cockpit	10
Deck & Exterior	11
Engine Room / Mechanical Equipment	11
Exclusions	11
Disclaimer	11
PHOTOS	12
Salon	12
Salon	12
Salon	12
Salon	12

Dinnette	12
Dinnette Seating	12
Salon	13
Galley	13
Galley Sink	13
Galley	13
Galley Fridge	13
Galley Freezer	13
Master Stateroom	14
Master Hanging Locker	14
Master Stateroom	14
Master Head	14
Head	14
Guestroom Stateroom	14
Washer/Dryer	15
VIP Stateroom	15
Helm	15
Helm	15
Flybridge Seating	15
Flybridge Seating	15
Flybridge Seating	16
Flybridge Refrigerator	16
Bow	16
Bow	16
Bow Lounge	16
Helm Seating	16
Port Profile	17
Starboard Walkway	17
Port Walkway	17

Engine Room	17
Engine Room	17
Generator	17
Generator	18
Engine	18
Engine	18
Engine	18
Engine Room	18
Cockpit	18
Cockpit stairs	19
Swim platform	19
Transom	19
Profile	19
Transom Storage	19
Tender	19
Tender	20
Tender	20
CONTACTS	21
Contact details	21
Telephones	21
Office hours	21
Address	21

SPECIFICATIONS

Overview

This extremely well kept Sea Ray 560 with Hydraulic swim platform and bridge A/C has been meticulously maintained by it's owners since day one!

If you are looking for a well maintained fly bridge boat, look no further, even the engine room where most people “forget” to clean or maintain is immaculate. Recent updates or upgrades listed below:

- **New LED lighting thru out.**
- **All TV replaced with flat screen HD TV October of 2017**
- **New aft canvas and sun shade 2017**
- **All new exterior cushions cover 2017**
- **New cockpit marble table 2017**
- **All batteries replaced August of 2017**
- **Battery charger replaced August of 2017**
- **Vaccu flush head system serviced October of 2017**
- **New sea water strainers November of 2017**
- **Generator hoses replaced April of 2017**
- **New washer/dryer combo October 2016**
- **Upgraded sound system with JL speakers 2017**

- **2008 10.5 ft Tender with 20 HP outboard included in purchase price!**

Don't miss out on this opportunity to buy this immaculate boat that is truly turn key and

ready to go cruising!

Basic Information

Category: Cruiser

Sub Category: Cabin Cruiser

Model Year: 1999

Year Built: 1999

Country: United States

Fly Bridge: Yes

Cockpit: Yes

Dimensions

LOA: 56' 0" (17.07m)

Beam: 16' 0" (4.88m)

Max Draft: 4' 6" (1.37m)

MFG Length: 58' 6" (17.83m)

Speed, Capacities and Weight

Water Capacity: 200 Gallons

Holding Tank: 68 Gallons

Fuel Capacity: 800 Gallons

Accommodations

Total Cabins: 3

Total Berths: 3

Hull and Deck Information

Hull Material: Fiberglass

Engine Information

Manufacturer: Caterpillar

Model: 3406E

Engine Type: Inboard

Fuel Type: Diesel

DETAILED INFORMATION

Salon

- Wrap around sofa with storage below
- Port and starboard salon couches
- DVD player
- Granite coffee / sofa table
- Window treatments and blinds
- Storage
- Large sliding door wall with screen from cockpit
- Direct lighting
- Indirect lighting
- Large flat screen TV

Galley

- Under countertop 120V Sub Zero Fridge
- Under countertop 120V Sub Zero Freezer
- Wood flooring
- Microwave convection oven
- Lower galley with lazy Susan
- Plenty of cabinetry and drawer storage
- Three-burner range
- Wood floor
- Exhaust fan
- Adjacent facing dinette
- Sink and faucet

Master Stateroom

- Island queen berth
- Vanity, mirrors, stool, cabinetry
- TV, Bose Acustimass 3 Speaker system
- Hanging locker
- Ensuite head with cabinetry storage and enclosed shower
- Full length mirrors
- Drawers
- Direct lighting
- Indirect lighting
- Reading lights

- Deck hatch with screen and shade

VIP Stateroom, Starboard

- Full size berth
- Vanity with mirrors, storage, drawers, stool
- Under berth drawers
- TV
- Direct lighting
- Access to guest head
- Circular skylight
- Hanging locker
- Large mirrors
- Indirect lighting
- Reading lights

Guest Port Stateroom

- Upper and lower berths
- TV
- Hanging locker
- Washer/Dryer unit
- Direct lighting
- Indirect lighting
- Reading lights
- Deck hatch with screen and shade

Flybridge

- Hardtop with complete enclosure
- U-shaped lounge seating forward with adjustable table
- Entertainment center
- U-line ice maker
- Refrigerator
- Sink
- Carpeting
- Large bench seat aft of helm chairs
- Plenty of storage
- Molded in staircase to bridge

- AC/heat
- TV
- Upgraded JL speakers

Electrical & Navigational Equipment

- Upgraded 2 Raymarine E125 Chartplotters
- Upgraded 2 Raymarine VHF radios
- Upgraded Raymarine Autopilot
- NEW Kenwood Stereo - December 2017
- Raymarine ST60 Ray Tri-Data
- RCL-1000 spotlight
- American bow thruster controls
- Bennett trim tab indicators
- Sea Ray system monitor

Electrical System

- Emergency battery parallel
- Generator-21kW Westerbeke
- Cruisair reverse cycle AC/heat
- (4) 8D batteries
- 50 amp 240 volt power cord with Glendinning cablemaster
- 50 amp 120 volt power cord with Glendinning cablemaster
- Phone/TV connection in cockpit
- Central Vacuum w/ dual inlet
- C – Phone w/ cellphone interface and antenna
- Added Separate 12V System for Electronics - December 2017

Cockpit

- Aft seating
- Cockpit table
- Upgraded Granite table w/ seating for 8 including deck chairs
- Upgraded aft extended Sunbrella sun shade with privacy curtain
- Sliding glass door w/screen to salon
- Haunch storage
- Engine room and lazarette access
- Hot/cold water shower
- Transom gate
- TV/phone connection

- Molded staircase to bridge with step storage

Deck & Exterior

- TNT hydraulic lifting platform
- American bow thruster
- Glendinning shore cord, retrieval
- Fresh water washdowns
- Dual trumpet horns

Engine Room / Mechanical Equipment

- Twin 3406 Caterpillar 800hp
- Twin Disc transmission
- Dripless shaft seals
- Reverso oil change system
- Auto fire suppression
- 30 Amp battery charger
- Racor fuel filters

Exclusions

Owner's personal belongings.

Disclaimer

The Company offers the details of this vessel or yacht in good faith but cannot guarantee or warrant the accuracy of this information nor warrant the condition of the vessel. A buyer should instruct his representatives, agents, or his surveyors, to investigate such details as the buyer desires validated. This vessel or yacht is offered subject to prior sale, price change, or withdrawal without notice.

PHOTOS

Salon



Salon



Salon



Salon



Dinnette



Dinnette Seating



Salon



Galley



Galley Sink



Galley



Galley Fridge



Galley Freezer



Master Stateroom



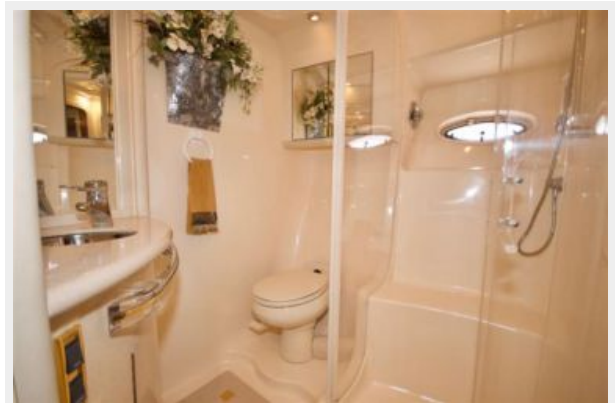
Master Hanging Locker



Master Stateroom



Master Head



Head



Guestroom Stateroom



Washer/Dryer



VIP Stateroom



Helm



Helm



Flybridge Seating



Flybridge Seating



Flybridge Seating



Flybridge Refrigerator



Bow



Bow



Bow Lounge



Helm Seating



Port Profile



Starboard Walkway



Port Walkway



Engine Room



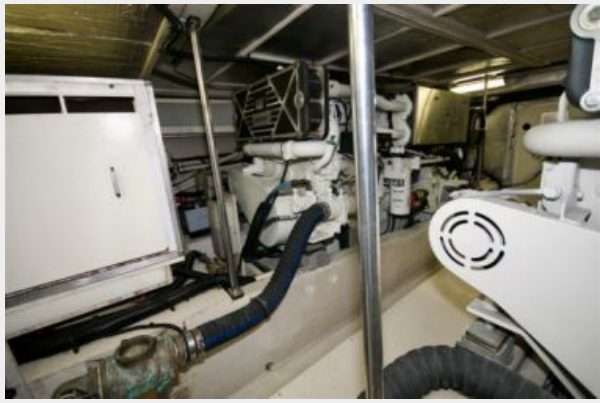
Engine Room



Generator



Generator



Engine



Engine



Engine



Engine Room



Cockpit



Cockpit stairs



Swim platform



Transom



Profile



Transom Storage



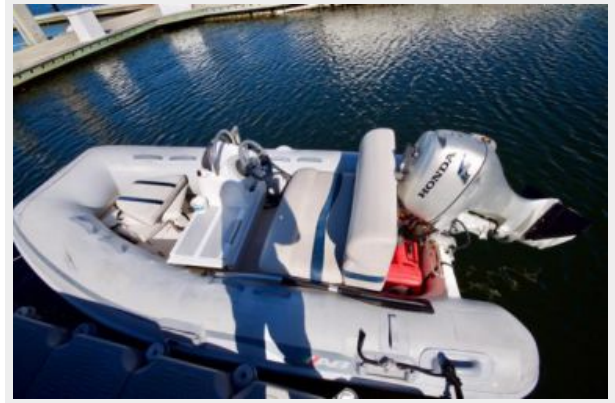
Tender



Tender



Tender



CONTACTS

Andrey Shestakov, leading yacht broker of the sales department of Shestakov Yacht Sales Inc. Shestakov Yacht Sales Inc., the official representative of the Miami/Fort Lauderdale FL headquarters.

Contact details

Email: andrey@shestakovyachtsales.com

Web: shestakovyachtsales.com/en/

Telephones

USA: +1(954)274-4435

Office hours

Monday – Saturday: **9:00 - 21:00** EDT

Sunday: **closed**

Address



Harbour Towne Marina, 850 NE 3rd St,
STE 213, Dania, FL 33004