

ELECTRA — AZIMUT



Builder: [AZIMUT](#)

Year Built: 2007

Model: Motor Yacht

Price: PRICE ON APPLICATION

Location: United States

LOA: 62' 0" (18.90m)

Beam: 16' 1" (4.90m)

Max Draft: 5' 0" (1.52m)

Our experienced yacht broker, Andrey Shestakov, will help you choose and buy a yacht that best suits your needs **Electra — AZIMUT** from our catalogue. Presently, at Shestakov Yacht Sales Inc., we have a wide variety of yachts available on our sale's list. We also work in close contact with all the big yacht manufacturers from all over the world.

If you would like to buy a yacht **Electra — AZIMUT** or would like help answering any questions concerning purchasing, selling or chartering a yacht, please call **+1(954)274-4435**

TABLE OF CONTENTS

TABLE OF CONTENTS	2
SPECIFICATIONS	3
Overview	3
Basic Information	3
Dimensions	3
Accommodations	3
Hull and Deck Information	3
Engine Information	4
DETAILED INFORMATION	5
Walkthrough	5
Salon	5
Galley	5
Master Stateroom	5
VIP Stateroom	6
Aft Deck	6
Electronics	6
Engine Room	7
Deck Equipment	7
Exclusions	7
Disclaimer	7
PHOTOS	8
CONTACTS	16
Contact details	16
Telephones	16
Office hours	16
Address	16

SPECIFICATIONS

Overview

2007 62' Azimut Sport "ELECTRA"

This one owner 62S Azimut is priced to sell and easy to see. She features a low, sleek profile while providing all the luxurious living space needed. This yacht is a great combination of the practical requirements of a fast motoryacht and modern styling. She boasts an impressive beam of 16'1", two large cabins with best in class windows, both with ensuite heads, powered with twin 1015 HP CAT C18 engines. This vessel has a flashy Bordeaux Red Metallic hull color.

Basic Information

Category: Motor Yacht

Sub Category: Sport Cruiser

Model Year: 2007

Year Built: 2007

Country: United States

Dimensions

LOA: 62' 0" (18.90m)

Beam: 16' 1" (4.90m)

Max Draft: 5' 0" (1.52m)

Accommodations

Total Cabins: 2

Total Berths: 2

Total Heads: 2

Hull and Deck Information

Hull Material: Fiberglass

Engine Information

Engines: 2

Manufacturer: Caterpillar

Model: C18

Engine Type: Inboard

Fuel Type: Diesel

DETAILED INFORMATION

Walkthrough

This one owner 62S Azimut is priced to sell and easy to see. She features a low, sleek profile while providing all the luxurious living space needed. This yacht is a great combination of the practical requirements of a fast motoryacht and modern styling. She boasts an impressive beam of 16'1", two large cabins with best in class windows, both with ensuite heads. Powered with twin 1015 HP CAT C18 engines. This vessel has a flashy Bordeaux Red Metallic hull color.

Salon

The salon of the Azimut 62S offers ample amounts of daylight and sunshine through the large retractable roof and salon doors that disappear for a wide open design. The slim pillars allow for great visibility from the helm. The dining table can expand to seat eight and a TV rises out of the starboard side cabinet.

- Large retractable sunroof
- BOSE Home Theater system w/ HD surround sound
- Pop up LED Flat screen TV
- Privacy curtains
- A/C controls
- DSS SAT TV system
- Wenge wood floors
- Overhead lighting

Galley

Located on the starboard side of the lower salon the galley offers ample room to entertain guests and store food while on board. Her exclusive design stores dishes securely while underway.

- Refrigerator
- Freezer
- Microwave-Convection oven
- (4) Burner electric range
- Stainless steel sink
- Wenge floor
- Above counter lighting

Master Stateroom

The master stateroom features a queen island berth accessible from both sides. You can relax in comfort and admire the seascape through large and distinctive hull windows.

- Spacious closet with full length mirror inside
- Private ensuite head & shower
- Storage under berth
- Flat Screen TV
- A/C controls

VIP Stateroom

Just forward of the salon lies the VIP cabin, with a comfortable bed and stylish side windows, which provide lots of natural light.

- Flat Screen TV
- LED Reading lights
- Berth with access from both sides

Aft Deck

- Teak decking
- Wet bar
- Ice maker
- BBQ
- Hydraulic lift swim platform
- Electric mooring winches
- Refrigerator
- Sumbrella canvas cover for aft seating & sunpad
- Access to crew quarters

Electronics

- (2) Raymarine E120
- 72 NM Open Array Antenna
- Radar
- VHF
- Raymarine Auto Pilot
- Engine synchronizer
- Trim tab indicator and controls
- Quick anchor chain counter
- Alarm Panel

- Spotlight control
- Bow & stern thrusters

Engine Room

- (2) CAT C18 1015 HP – Approximately 1000 hours
- 20 KW Generator
- Bow and stern thrusters
- Racor prefilters
- Battery charger
- Fresh water pump
- Trim tabs
- Hydraulic steering
- Cruisair AC
- Temperature sensors
- Oil change system

Deck Equipment

- Large bow sunpad with Sumbrella canvas cover
- Stern tender garage
- Anchor windlass
- Access from cockpit hatch to engine room
- Hot and cold cockpit shower
- 50 amp dockside electric connection
- Navigation lights
- Cockpit lights

Exclusions

Owner's personal belongings.

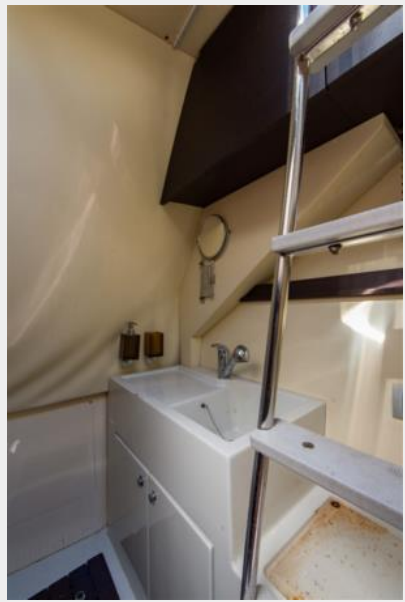
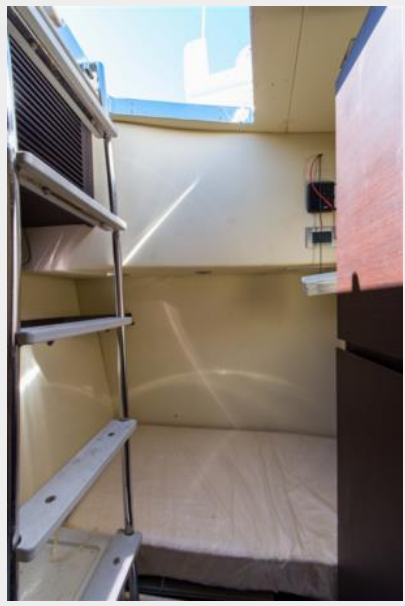
Disclaimer

The Company offers the details of this vessel or yacht in good faith but cannot guarantee or warrant the accuracy of this information nor warrant the condition of the vessel. A buyer should instruct his representatives, agents, or his surveyors, to investigate such details as the buyer desires validated. This vessel or yacht is offered subject to prior sale, price change, or withdrawal without notice.

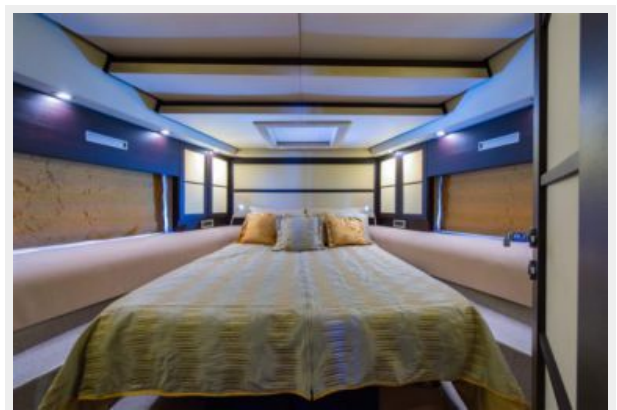
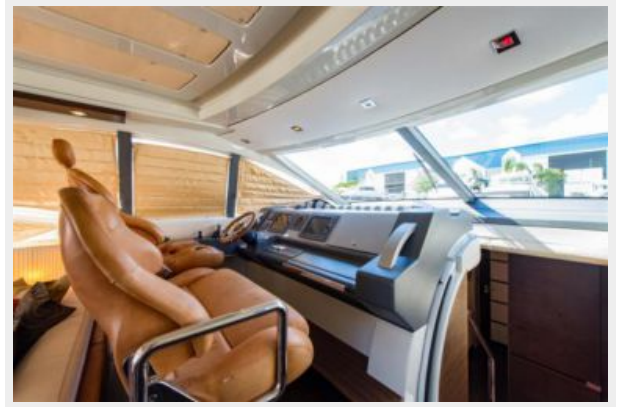
PHOTOS



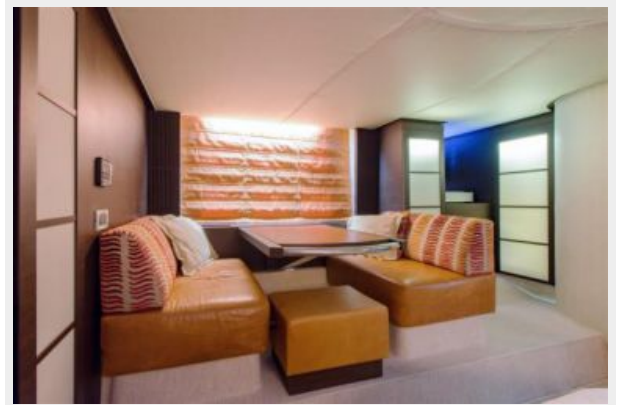














CONTACTS

Andrey Shestakov, leading yacht broker of the sales department of Shestakov Yacht Sales Inc. Shestakov Yacht Sales Inc., the official representative of the Miami/Fort Lauderdale FL headquarters.

Contact details

Email: andrey@shestakovyachtsales.com

Web: shestakovyachtsales.com/en/

Telephones

USA: +1(954)274-4435

Office hours

Monday – Saturday: **9:00 - 21:00** EDT

Sunday: **closed**

Address



Harbour Towne Marina, 850 NE 3rd St,
STE 213, Dania, FL 33004