

MOONDANCE — MAINSHIP



Builder: MAINSHIP

Year Built: 2001

Model: Trawler

Price: PRICE ON APPLICATION

Location: United States

LOA: 43' 0" (13.11m)

Beam: 15' 5" (4.70m)

Min Draft: 3' 10" (1.17m)

Max Draft: 3' 10" (1.17m)

Cruise Speed: 9 Kts. (10 MPH)

Max Speed: 15 Kts. (17 MPH)

Our experienced yacht broker, Andrey Shestakov, will help you choose and buy a yacht that best suits your needs **Moondance — MAINSHIP** from our catalogue. Presently, at Shestakov Yacht Sales Inc., we have a wide variety of yachts available on our sale's list. We also work in close contact with all the big yacht manufacturers from all over the world.

If you would like to buy a yacht **Moondance — MAINSHIP** or would like help answering any questions concerning purchasing, selling or chartering a yacht, please call **+1(954)274-4435**

TABLE OF CONTENTS

TABLE OF CONTENTS	2
SPECIFICATIONS	6
Overview	6
Basic Information	6
Dimensions	6
Speed, Capacities and Weight	6
Accommodations	6
Hull and Deck Information	7
Engine Information	7
DETAILED INFORMATION	8
43' Mainship Vessel Walkthrough	8
43' Mainship Accommodations	8
43' Mainship Salon	8
43' Mainship Galley	8
43' Mainship Dining	8
43' Mainship Master Stateroom	9
43' Mainship Forward Guest Stateroom	9
43' Mainship Port Guest Stateroom	9
43' Mainship Lower Helm	9
43' Mainship Laundry	9
43' Mainship Flybridge	9
43' Mainship Trunk Cabin	9
43' Mainship Aftdeck	10
43' Mainship Audio/Visual Equipment	10
43' Mainship Electronics	10
43' Mainship Electrical System	10
43' Mainship Engine/Mechanical Equipment	10
43' Mainship Deck Equipment	11

43' Mainship Safety and Fire Protection	11
43' Mainship Exclusions	11
Additional Units Included	11
Exclusions	11
Disclaimer	11
PHOTOS	12
Moondance stbd profile 11-4-17	12
Moondance stbd aft profile 11-4-17	12
Moondance aft profile 11-4-17	12
Moondance anchor windlass 11-4-17	13
Moondance foredeck 11-4-17	13
Moondance port side deck1 11-4-17	13
Moondance foredeck aft 11-4-17	13
Moondance port side deck2 11-4-17	14
Moondance stbd side deck1 11-4-17	14
Moondance stbd side deck2 11-4-17	14
Moondance flybridge fwd 11-4-17	14
Moondance flybridge aft 11-4-17	15
Moondance flybridge port 11-4-17	15
Moondance flybridge stbd 11-4-17	15
Moondance flybridge helm 11-4-17	15
Moondance trunk cabin aft 11-4-17	15
Moondance trunk cabin fwd 11-4-17	15
Moondance aftdeck port 11-4-17	16
Moondance aftdeck stbd 11-4-17	16
Moondance swimplatform 11-4-17	16
Moondance tender1 11-4-17	16
Moondance tender2 11-4-17	16
Moondance tender outboard 11-4-17	16

Moondance salon fwd 11-4-17	17
Moondance salon aft 11-4-17	17
Moondance salon port 11-4-17	17
Moondance salon stbd 11-4-17	17
Moondance galley1 11-4-17	17
Moondance galley2 11-4-17	17
Moondance galley fwd 11-4-17	18
Moondance galley aft 11-4-17	18
Moondance freezer 11-4-17	18
Moondance lower helm1 11-4-17	18
Moondance lower helm2 11-4-17	18
Moondance master stateroom 11-4-17	18
Moondance master stateroom port 11-4-17	19
Moondance master stateroom stbd 11-4-17	19
Moondance master stateroom head 11-4-17	19
Moondance master stateroom fwd 11-4-17	19
Moondance fwd guest stateroom port 11-4-17	20
Moondance fwd guest stateroom 11-4-17	20
Moondance fwd guest stateroom stbd 11-4-17	20
Moondance port guest stateroom 11-4-17	20
Moondance guest head 11-4-17	21
Moondance washer-dryer 11-4-17	21
Moondance engine room aft 11-4-17	21
Moondance port main engine 9-9-15	21
Moondance port Racor fuel filter 11-4-17	22
Moondance stbd main engine 9-9-15	22
Moondance stbd Racor fuel filter 11-4-17	22
Moondance oil change system 11-4-17	22
Moondance electrical panel 11-4-17	23

Moondance generator 11-4-17	23
Moondance inverter-charger 9-9-15	23
Moondance battery charger 11-4-17	23
43&apos Mainship 3 SR layout	23
CONTACTS	24
Contact details	24
Telephones	24
Office hours	24
Address	24

SPECIFICATIONS

Overview

Moondance is a 2001 43' Mainship Trawler offering a 3 stateroom, 2 head, galley up layout. She also offers twin Yanmar 300 hp main engines, Kohler 8 kW generator, Mastervolt 2,500 watt inverter, full Canvas and Eisenglass enclosed flybridge and a Freedom Lift hydraulic tender davit system. Moondance has completed the Great Loop twice and is ready to go again.

Basic Information

Category: Trawler

Model Year: 2001

Year Built: 2001

Country: United States

Vessel Top: Bimini Top

Dimensions

LOA: 43' 0" (13.11m)

Beam: 15' 5" (4.70m)

Min Draft: 3' 10" (1.17m)

Max Draft: 3' 10" (1.17m)

Clearance: 18' 6" (5.64m)

Speed, Capacities and Weight

Cruise Speed: 9 Kts. (10 MPH)

Max Speed: 15 Kts. (17 MPH)

Displacement: 36000 Pounds

Water Capacity: 250 Gallons

Holding Tank: 82 Gallons

Fuel Capacity: 500 Gallons

Accommodations

Total Cabins: 3

Total Heads: 2

Hull and Deck Information

Hull Material: Fiberglass

Hull Configuration: Modified V-Hull

Engine Information

Engines: 2

Manufacturer: Yanmar

Model: 6LP-STE-97

Engine Type: Inboard

Fuel Type: Diesel

DETAILED INFORMATION

43' Mainship Vessel Walkthrough

Entering the boat from the swimplatform, you walk through the transom door into the aftdeck and then walk onto either side deck or step down into the master stateroom through the private access door. From either side deck, you can step up onto the trunk cabin and then step up to the flybridge or walk further forward and walk into the salon. From port, you walk into the galley forward and find a U-shaped settee port aft, a desk starboard aft, a lounge chair and entertainment center to starboard and the lower helm starboard forward. Forward there is a bow guest stateroom and one to port and the guest head is to starboard. The master stateroom is aft and is accessed from the salon or aftdeck. The engine room is accessed through a salon sole hatch or forward through a lift-up door. The headroom in the salon is 6'8", 6'3" in the master stateroom and shower, 6'4" in the forward guest stateroom and guest shower, 7'1" on the flybridge and 4'2" in the engine room. The master stateroom berth is 6'7" long and the forward guest stateroom v-berths are 6'2" long.

43' Mainship Accommodations

Moondance offers a full beam master stateroom aft with an ensuite head with enclosed shower, a guest stateroom forward with a v-berth, a guest stateroom to port with side by side berths and a guest head with enclosed shower to starboard.

43' Mainship Salon

The salon offers a built-in U-shaped settee with storage and hi/lo folding teak table to port, a desk starboard aft and lounge chair, entertainment center and book shelf to starboard. There is a sliding door to the trunk cabin aft and side deck access doors on each side forward. The sole is teak & holly. The large, opening side windows include wood blinds and keep this area very light and airy.

43' Mainship Galley

The galley is located port forward in the salon. - Princess Euro-Kera ceramic 3-burner electric cooktop (2012) - Contour convection/microwave oven (2012) - Black & Decker toaster oven - U-Line under counter refrigerator (2009) - Freezer under the helm seat - Double stainless steel sinks with a filtered water faucet - Storage cabinets and doors - Corian countertop - Side deck access door - Teak & holly sole

43' Mainship Dining

Dining space is available at the salon settee and table and the flybridge port seating and table.

43' Mainship Master Stateroom

The aft master stateroom offers a queen size berth, cedar-lined hanging locker, storage drawers and cabinets, a sliding door from the aftdeck, carpet, 4 portlights, curtains, nightstands, reading lights, fan and an ensuite head with enclosed shower.

43' Mainship Forward Guest Stateroom

The forward guest stateroom offers a v-berth with storage, 3 portlights with curtains, overhead hatch with screen and shade, carpet, fan, 2 hanging lockers, shelves and storage drawers. The guest head is starboard aft of this stateroom.

43' Mainship Port Guest Stateroom

The port guest stateroom offers side by side berths, reading lights, hanging locker, book shelf, overhead hatch with screen and shade, portlight with curtains and carpet. The guest head is to starboard.

43' Mainship Lower Helm

The lower helm is starboard forward in the salon and offers a full helm, side deck access door and helm benchseat.

43' Mainship Laundry

- Spendide 2000 combo washer/dryer

43' Mainship Flybridge

The flybridge offers molded-in steps from the trunk cabin, bimini top, Eisenglass enclosure, helm benchseat, built-in L-shaped seating (with storage underneath) and table to port, built-in seating to starboard with storage underneath and nonskid deck.

43' Mainship Trunk Cabin

The trunk cabin offers aluminum rails, deck chairs, non-skid deck, deck storage box, outboard storage bracket, molded-in steps to each side deck, molded-in steps to the flybridge and sliding

door to the salon.

43' Mainship Aftdeck

The aftdeck offers a transom door to the fiberglass swimplatform, access to each side deck, lazarette access, non-skid deck, dock water connection, hot/cold fresh water shower and aft shore power connections.

43' Mainship Audio/Visual Equipment

- Seawatch HDTV antenna - Insignia flat screen TV in the salon - Alpine CDE-SXM445-BT stereo/CD/sat ready player in the salon (2015) - Alpine surround sound speakers (2015)

43' Mainship Electronics

- Raymarine HD 4 kW Radar (2010) - Raymarine 500 AIS transceiver (2009) - Ritchie magnetic compass at both helms - Raymarine C90 multi-function display at each helm with XM weather service (2010) - Raymarine P70R autopilot (2014) on the flybridge and a Smart Pilot remote at the lower helm - Raytheon ST60 Tridata display on the flybridge and ST60 Multi display at the lower helm - Uniden ES UM525 VHF on the flybridge and a wireless remote at the lower helm - Raytheon Ray 45 VHF at the lower helm - Weems & Plath ship's clock, barometer, thermometer and hygrometer - Aft docking camera (2013) - Digital cell phone signal booster

43' Mainship Electrical System

- Kohler 8EOZ 8 kW generator with approximately 4,508 hours (4,000 hour service completed in 2015) - Mastervolt Mass Combi 12/2500-100 inverter - ProMariner ProNautic 12.50 P battery charger - ProMariner ProCharge 130-2-4 battery isolator - Guest battery switches - 2 X Lifeline AGM GPL-8DA main engine start batteries (2013) - 2 X Lifeline AGM GPL-8DA inverter batteries (2014) - Group 24 generator start battery (2014) - Denso alternators - 50 amp shore cord - Shore power connections fore and aft - 12vdc outlet on the flybridge and at the lower helm

43' Mainship Engine/Mechanical Equipment

- Twin Yanmar 6LP-STE-97 300 hp main engines with approximately 4,083 hours - ZF Hurth gearboxes - Teleflex engine controls - Glendinning synchronizer - VDO gauges - Racor 1000 MA fuel filter with vacuum gauge for each main engine - Racor R12S fuel filter for the generator - Oil-X-Changer oil change system - Capilano steering system - Bennett trim tabs - Marine Air Systems reverse cycle air conditioning/heating system (Salon unit new in 2010 and master stateroom unit new in 2012) - Seaward 20 gallon water heater - Central vacuum system - Jabsco electric heads - Tankwatch 4 holding tank level monitoring system - Maintenance logs

43' Mainship Deck Equipment

- Lewmar anchor windlass with foot controls and remote controls at each helm (2014) - Delta anchor - 200' 5/16" anchor chain and 200' 9/16" nylon anchor rode - Pulpit with stainless steel anchor roller - Aluminum rails - Stainless steel deck hardware - Non-skid decks - Windshield cover - Stainless steel fender racks - Spreader lights - Boarding gates each side aft - Boarding ladder - 8 rod holders - Fiberglass swimplatform with stainless steel pop-up cleats - Aluminum swim ladder - Freedom Lift hydraulic tender davit system - Dock water connection - Washdown - Hot/cold fresh water shower aft - Built-in swimplatform storage box - Deck storage box on the trunk cabin

43' Mainship Safety and Fire Protection

- Fireboy engine room fire suppression system - Sea-Fire emergency engine shut down system - Fire extinguishers - GoLight searchlight - Rule bilge pumps - Bilge high water alarms - Nighthawk smoke and carbon monoxide detectors - ACR EPIRB - Aft security camera (2013) - Kahlenberg air horn

43' Mainship Exclusions

- Sellers' personal belongings

Additional Units Included

Nautica RIB

Exclusions

Owner's personal belongings.

Disclaimer

The Company offers the details of this vessel or yacht in good faith but cannot guarantee or warrant the accuracy of this information nor warrant the condition of the vessel. A buyer should instruct his representatives, agents, or his surveyors, to investigate such details as the buyer desires validated. This vessel or yacht is offered subject to prior sale, price change, or withdrawal without notice.

PHOTOS



Moondance stbd profile 11-4-17



Moondance stbd aft profile 11-4-17



Moondance aft profile 11-4-17



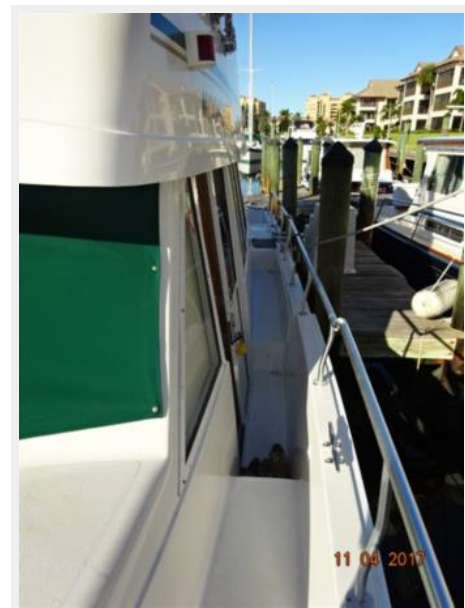
Moondance anchor windlass 11-4-17



Moondance foredeck 11-4-17



Moondance port side deck1 11-4-17



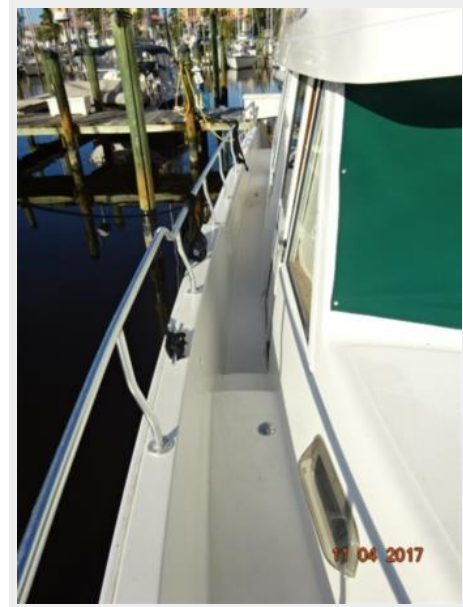
Moondance foredeck aft 11-4-17



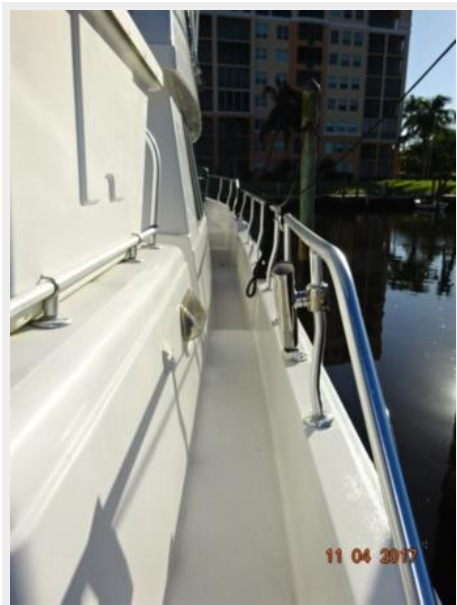
Moondance port side deck2 11-4-17



Moondance stbd side deck1 11-4-17



Moondance stbd side deck2 11-4-17



Moondance flybridge fwd 11-4-17



Moondance flybridge aft 11-4-17



Moondance flybridge port 11-4-17



Moondance flybridge stbd 11-4-17



Moondance flybridge helm 11-4-17



Moondance trunk cabin aft 11-4-17



Moondance trunk cabin fwd 11-4-17



Moondance aftdeck port 11-4-17



Moondance aftdeck stbd 11-4-17



Moondance swimplatform 11-4-17



Moondance tender1 11-4-17



Moondance tender2 11-4-17



Moondance tender outboard 11-4-17



Moondance salon fwd 11-4-17



Moondance salon aft 11-4-17



Moondance salon port 11-4-17



Moondance salon stbd 11-4-17



Moondance galley1 11-4-17



Moondance galley2 11-4-17



Moondance galley fwd 11-4-17



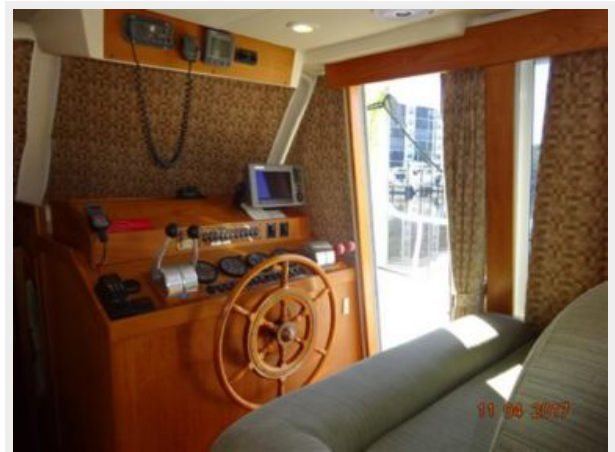
Moondance galley aft 11-4-17



Moondance freezer 11-4-17



Moondance lower helm1 11-4-17



Moondance lower helm2 11-4-17



Moondance master stateroom 11-4-17



Moondance master stateroom port 11-4-17



Moondance master stateroom stbd 11-4-17



Moondance master stateroom head 11-4-17

Moondance master stateroom fwd 11-4-17



Moondance fwd guest stateroom 11-4-17



Moondance fwd guest stateroom port 11-4-17



Moondance fwd guest stateroom stbd 11-4-17



Moondance port guest stateroom 11-4-17



Moondance guest head 11-4-17



Moondance washer-dryer 11-4-17



Moondance engine room aft 11-4-17



Moondance port main engine 9-9-15



Moondance stbd main engine 9-9-15



Moondance port Racor fuel filter 11-4-17



Moondance stbd Racor fuel filter 11-4-17



Moondance oil change system 11-4-17



Moondance electrical panel 11-4-17



Moondance generator 11-4-17



Moondance inverter-charger 9-9-15



Moondance battery charger 11-4-17



43's Mainship 3 SR layout



CONTACTS

Andrey Shestakov, leading yacht broker of the sales department of Shestakov Yacht Sales Inc. Shestakov Yacht Sales Inc., the official representative of the Miami/Fort Lauderdale FL headquarters.

Contact details

Email: andrey@shestakovyachtsales.com

Web: shestakovyachtsales.com/en/

Telephones

USA: +1(954)274-4435

Office hours

Monday – Saturday: **9:00 - 21:00** EDT

Sunday: **closed**

Address



Harbour Towne Marina, 850 NE 3rd St,
STE 213, Dania, FL 33004