

GANDALF — HOLLAND



Builder: HOLLAND

Year Built: 1960

Model: Cruising Sailboat

Price: \$65,000 USD

Location: United States

LOA: 47' (14.33mm)

Beam: 12

Max Draft: 7' 6" (2.29mm)

Our experienced yacht broker, Andrey Shestakov, will help you choose and buy a yacht that best suits your needs **GANDALF — HOLLAND** from our catalogue. Presently, at Shestakov Yacht Sales Inc., we have a wide variety of yachts available on our sale's list. We also work in close contact with all the big yacht manufacturers from all over the world.

If you would like to buy a yacht **GANDALF — HOLLAND** or would like help answering any questions concerning purchasing, selling or chartering a yacht, please call **+1(954)274-4435**

TABLE OF CONTENTS

TABLE OF CONTENTS	2
SPECIFICATIONS	3
Overview	3
Basic Information	3
Dimensions	3
Speed, Capacities and Weight	3
Accommodations	4
Hull and Deck Information	4
Engine Information	4
PHOTOS	5
CONTACTS	12
Contact details	12
Telephones	12
Office hours	12
Address	12

SPECIFICATIONS

Overview

'GANDALF' is a proven vessel with a steel hull and deck that can shoulder to weather without shuddering or stalling in the wave troughs and also track flawlessly in big following seas. 'GANDALF' has been thoughtfully maintained by a renowned Porsche mechanic and his wife. Between 1992 and 2017 this vessel has been extensively improved and enhanced by the owner's. Between 1992-1997 the hull, deck and exterior was totally stripped and refinished, sandblasted where needed, primer and painted throughout the inside and out. As a result many aspects of the custom upgrades includes special features such as stainless steel fittings where possible are welded to the deck, along with stainless steel plating reinforced around the entire toe-rail. During this mid 90's work schedule total replacement of Electrical and Plumbing systems were done. The standing and running rigging was replaced in 2003. A new Yanmar diesel was installed in 1999, and the transmission was rebuilt in 2008.. In addition to this having been built and maintained to a superb level, this fine steel vessel is a fast passage maker and can be handled easily by one or two people (Newport to Bermuda in 3-1/2 days). Completing an 8 year Round-the-World cruise the speed, steel construction and maneuverability of this vessel was a life-savior for the owner's, during a pirate attack off the coast of Yemen in 2005 "Gandalf" has a wealth of detail not found on other vessels and is a superb example of a beautifully built steel yacht. Fully equipped with many spare parts and ready to sail away.

Basic Information

Category: Cruising Sailboat

Sub Category: Cruising Sailboat

Model Year: 1960

Year Built: 1960

Country: United States

Dimensions

LOA: 47' (14.33mm)

LWL: 33' (10.06mm)

Beam: 12

Max Draft: 7' 6" (2.29mm)

Speed, Capacities and Weight

Fuel Capacity: 120 Gal Gallons

Accommodations

Total Cabins: 2

Sleeps: 5

Total Heads: 1

Hull and Deck Information

Hull Material: Steel

Deck Material: Steel

Hull Configuration: Full Displacement

Hull Color: Green

Hull Designer: Frans Maas-LeFevre

Engine Information

Engines: 1

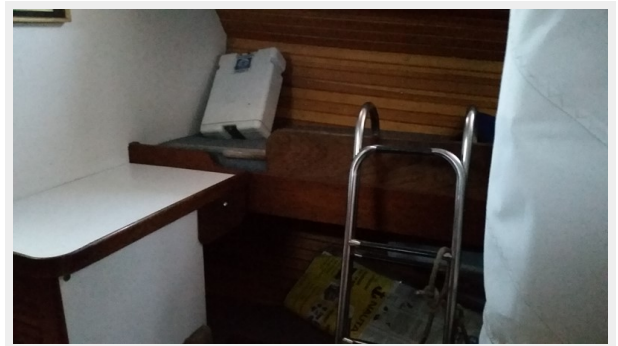
Manufacturer: Yanmar

Engine Type: Inboard

Fuel Type: Diesel

PHOTOS

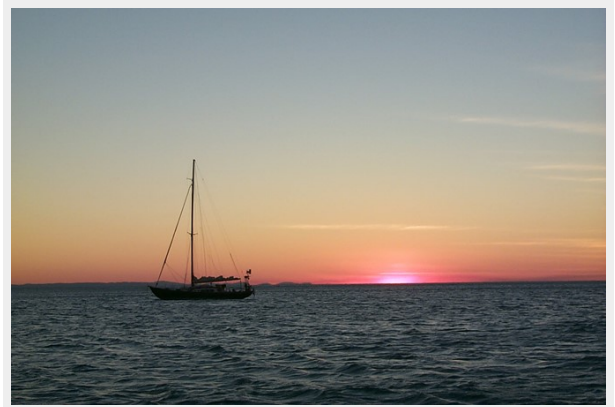


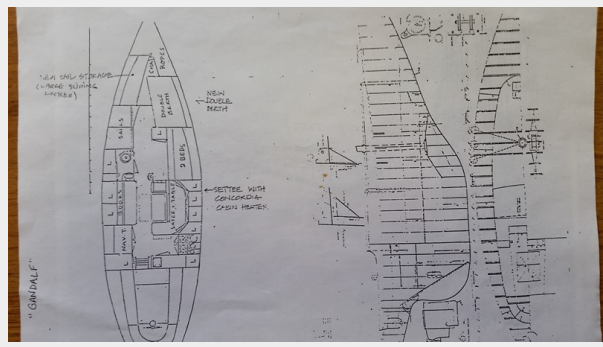












CONTACTS

Andrey Shestakov, leading yacht broker of the sales department of Shestakov Yacht Sales Inc. Shestakov Yacht Sales Inc., the official representative of the Miami/Fort Lauderdale FL headquarters.

Contact details

Email: andrey@shestakovyachtsales.com

Web: shestakovyachtsales.com/en/

Telephones

USA: +1(954)274-4435

Office hours

Monday – Saturday: **9:00 - 21:00** EDT

Sunday: **closed**

Address



Harbour Towne Marina, 850 NE 3rd St,
STE 213, Dania, FL 33004