

DELILAH — ALDEN YACHTS



Builder: ALDEN YACHTS

Year Built: 1964

Model: Cruising Ketch

Price: \$100,000 USD

Location: United States

LOA: 47' 4" (14.43mm)

Beam: 12.08

Max Draft: 5' 4" (1.63mm)

Our experienced yacht broker, Andrey Shestakov, will help you choose and buy a yacht that best suits your needs **Delilah — ALDEN YACHTS** from our catalogue. Presently, at Shestakov Yacht Sales Inc., we have a wide variety of yachts available on our sale's list. We also work in close contact with all the big yacht manufacturers from all over the world.

If you would like to buy a yacht **Delilah — ALDEN YACHTS** or would like help answering any questions concerning purchasing, selling or chartering a yacht, please call **+1(954)274-4435**

TABLE OF CONTENTS

TABLE OF CONTENTS	2
SPECIFICATIONS	3
Overview	3
Basic Information	3
Dimensions	3
Speed, Capacities and Weight	3
Accommodations	3
Hull and Deck Information	3
Engine Information	4
PHOTOS	5
CONTACTS	9
Contact details	9
Telephones	9
Office hours	9
Address	9

SPECIFICATIONS

Overview

DELILAH is one of the handsome and able Alden LADY HELENE cruising ketches (design no. 0983) known for their roomy and comfortable interiors and cockpit areas. DELILAH has benefited from years of good care from her current owner, including consistent upgrades as listed in the "Full Specs." She can be well recommended for anyone desiring a traditional and comfortable cruising yacht with a good pedigree. Exterior Varnish stripped and varnished 2017 and Hull sanded and painted Nov 2017.

Basic Information

Category: Cruising Ketch

Sub Category: Cruising Ketch

Model Year: 1964

Year Built: 1964

Country: United States

Dimensions

LOA: 47' 4" (14.43mm)

LWL: 31' 8" (9.65mm)

Beam: 12.08

Max Draft: 5' 4" (1.63mm)

Speed, Capacities and Weight

Water Capacity: 150 Gallons

Fuel Capacity: 90 Gal Gallons

Accommodations

Total Cabins: 3

Total Heads: 1

Hull and Deck Information

Hull Material: Wood

Engine Information

Engines: 1

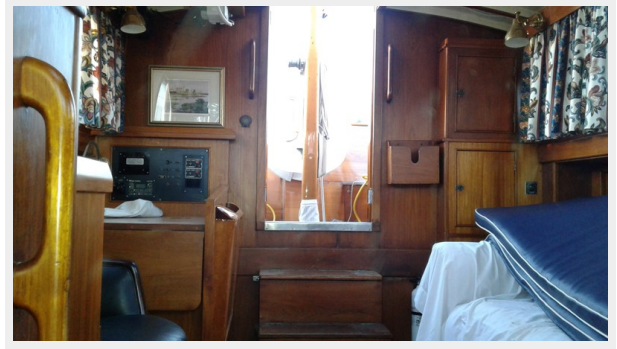
Manufacturer: Volvo Penta

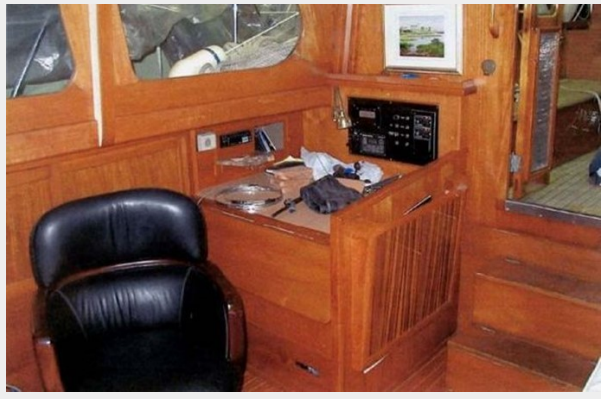
Engine Type: Inboard

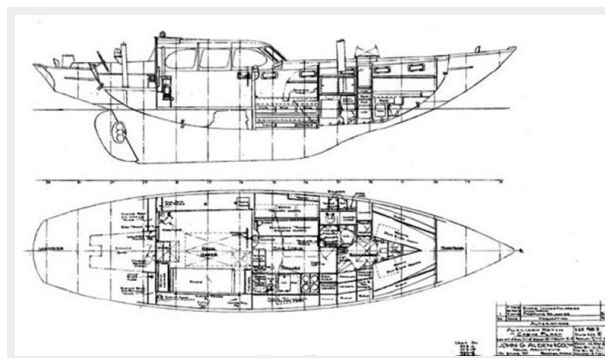
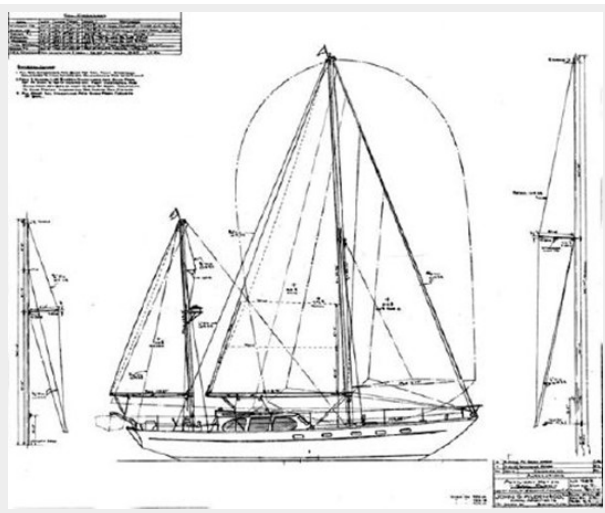
Fuel Type: Diesel

PHOTOS









CONTACTS

Andrey Shestakov, leading yacht broker of the sales department of Shestakov Yacht Sales Inc. Shestakov Yacht Sales Inc., the official representative of the Miami/Fort Lauderdale FL headquarters.

Contact details

Email: andrey@shestakovyachtsales.com

Web: shestakovyachtsales.com/en/

Telephones

USA: +1(954)274-4435

Office hours

Monday – Saturday: **9:00 - 21:00** EDT

Sunday: **closed**

Address



Harbour Towne Marina, 850 NE 3rd St,
STE 213, Dania, FL 33004