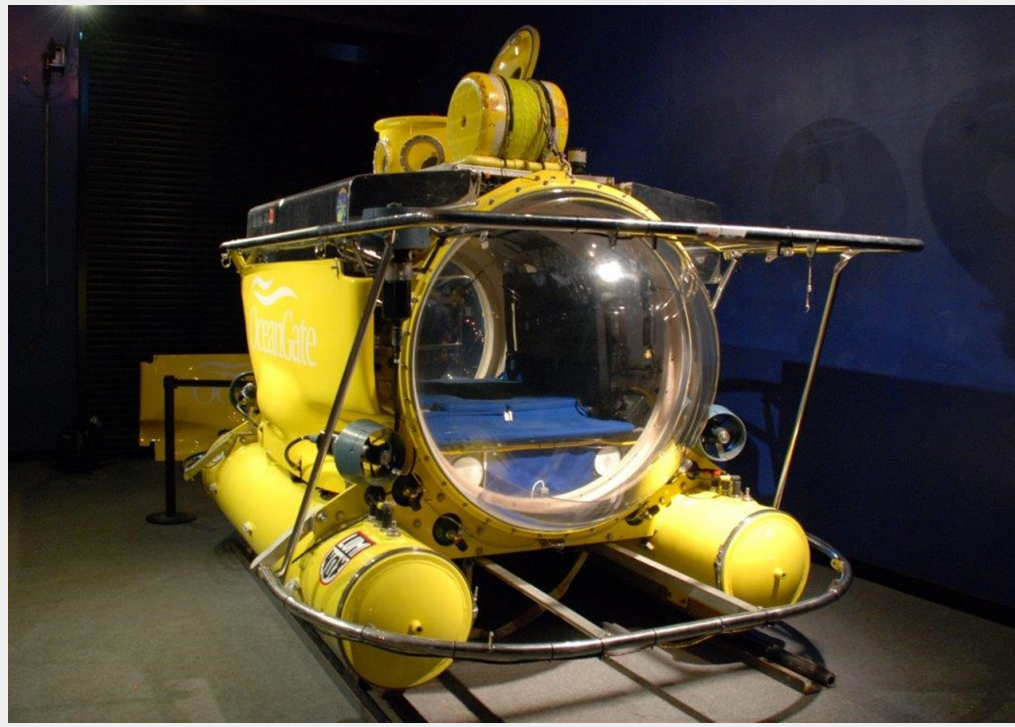


ANTIPODES — PERRY



Builder: PERRY

Year Built: 1973

Model: submarines

Price: PRICE ON APPLICATION

Location: United States

LOA: 13' 7" (4.14mm)

Beam: 8.33

Max Draft: 8' 7" (2.62mm)

Cruise Speed: 2 Knots Kts. (2 MPH)

Max Speed: 3 Knots Kts. (3 MPH)

Our experienced yacht broker, Andrey Shestakov, will help you choose and buy a yacht that best suits your needs **ANTIPODES — PERRY** from our catalogue. Presently, at Shestakov Yacht Sales Inc., we have a wide variety of yachts available on our sale's list. We also work in close contact with all the big yacht manufacturers from all over the world.

If you would like to buy a yacht **ANTIPODES — PERRY** or would like help answering any questions concerning purchasing, selling or chartering a yacht, please call +1(954)274-4435

TABLE OF CONTENTS

TABLE OF CONTENTS	2
SPECIFICATIONS	4
Overview	4
Basic Information	4
Dimensions	4
Speed, Capacities and Weight	4
Hull and Deck Information	4
Engine Information	5
PHOTOS	6
Underwater	6
ANTIPODES	6
Instrumentation	6
Profile	6
In a slip	7
Thruster and Battery Compartment	7
Front View	7
Launching from Travelift	7
Exterior	8
Warehouse	8
Transport	8
At Tow in Seattle	8
Antipodes on surface	9
Exterior	9
Jellyfish at Depth	9
Imagine Equipment	9
Survey of Wreck	9
CONTACTS	10
Contact details	10

Telephones	10
Office hours	10
Address	10

SPECIFICATIONS

Overview

Utilized for deep-water expeditions, *ANTIPODES* is a manned submersible that enables recreational, commercial and scientific applications for researchers, scientists, filmmakers and content providers. Through this unique submersible, Adventurers can access underwater environments and target sites at depths of 305 meters (1,000 feet).

Basic Information

Category: submarines

Sub Category: Pressurized

Model Year: 1995

Year Built: 1973

Country: United States

Dimensions

LOA: 13' 7" (4.14mm)

Beam: 8.33

Max Draft: 8' 7" (2.62mm)

Speed, Capacities and Weight

Cruise Speed: 2 Knots Kts. (2 MPH)

Max Speed: 3 Knots Kts. (3 MPH)

Hull and Deck Information

Hull Material: Steel

Deck Material: Nonskid painted

Hull Configuration: Other

Hull Color: Yellow and Black

Hull Designer: Perry Submarines

Exterior Designer: Perry Submarines

Interior Designer: Perry Submarines

Engine Information

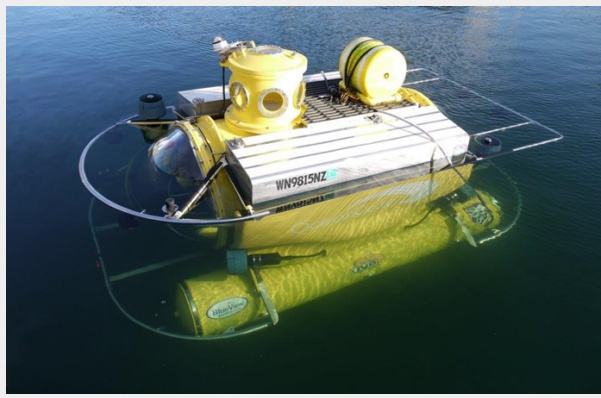
Engines: 2

Manufacturer: Tecnadyne Electric Thrusters

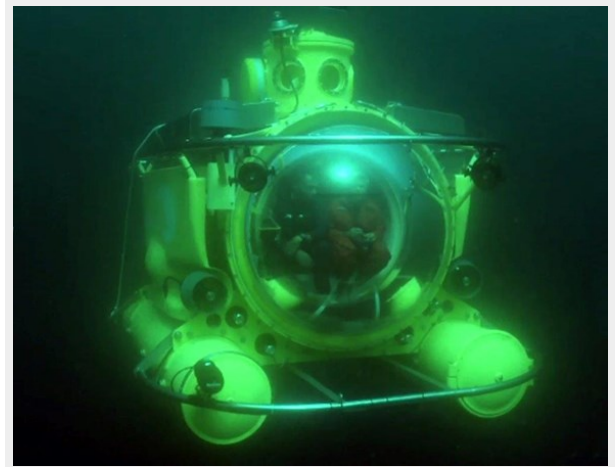
Fuel Type: Electric

PHOTOS

ANTIPODES



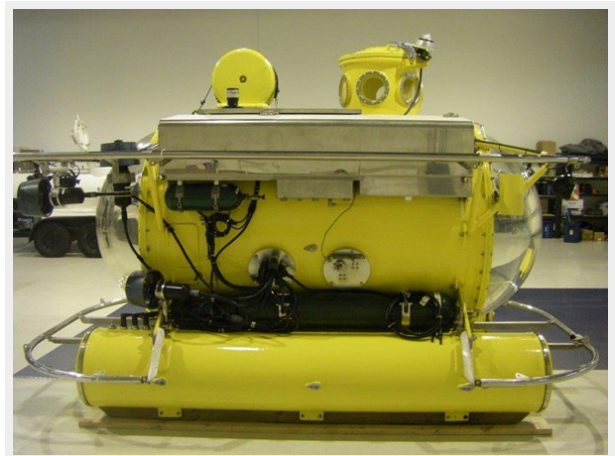
Underwater



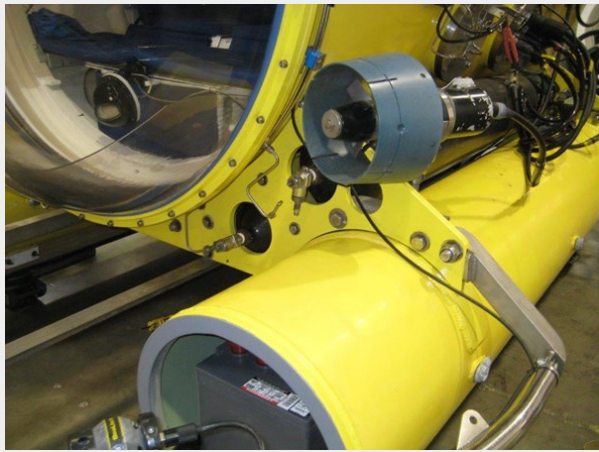
Instrumentation



Profile



Thruster and Battery Compartment



In a slip



Launching from Travelift



Front View



Warehouse



Exterior



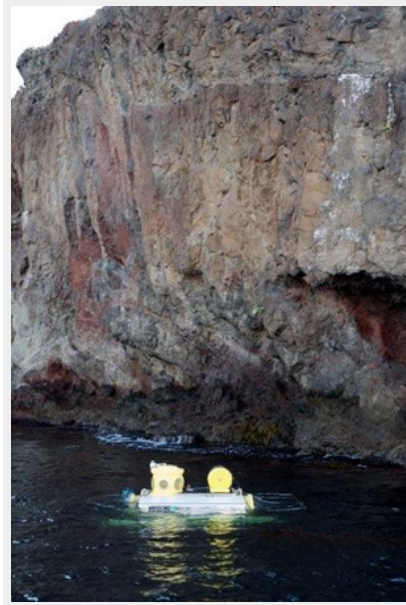
Transport



At Tow in Seattle



Antipodes on surface



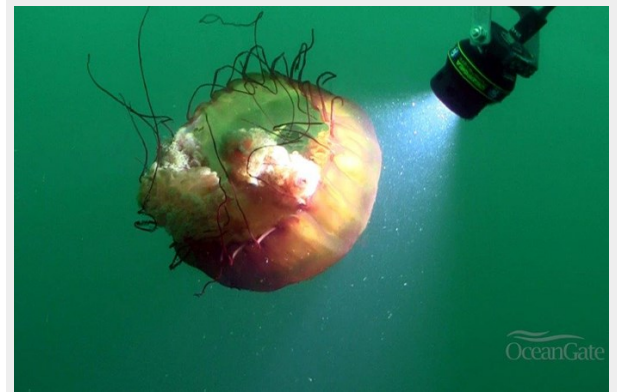
Exterior



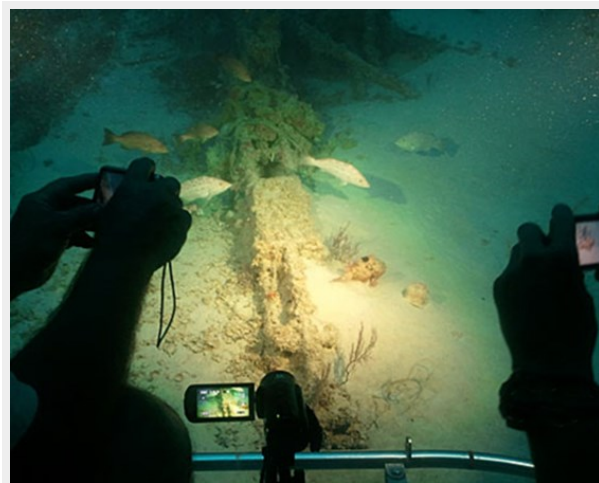
Imagine Equipment



Jellyfish at Depth



Survey of Wreck



CONTACTS

Andrey Shestakov, leading yacht broker of the sales department of Shestakov Yacht Sales Inc. Shestakov Yacht Sales Inc., the official representative of the Miami/Fort Lauderdale FL headquarters.

Contact details

Email: andrey@shestakovyachtsales.com

Web: shestakovyachtsales.com/en/

Telephones

USA: +1(954)274-4435

Office hours

Monday – Saturday: **9:00 - 21:00** EDT

Sunday: **closed**

Address



Harbour Towne Marina, 850 NE 3rd St,
STE 213, Dania, FL 33004