

VENETIAN — AZIMUT



Builder: AZIMUT

LOA: 100' 0" (30.48m)

Year Built: 2003

Beam: 21' 7" (6.58m)

Model: Motor Yacht

Max Draft: 6' 5" (1.96m)

Price: PRICE ON APPLICATION

Location: Bermuda

Our experienced yacht broker, Andrey Shestakov, will help you choose and buy a yacht that best suits your needs **VENETIAN — AZIMUT** from our catalogue. Presently, at Shestakov Yacht Sales Inc., we have a wide variety of yachts available on our sale's list. We also work in close contact with all the big yacht manufacturers from all over the world.

If you would like to buy a yacht **VENETIAN — AZIMUT** or would like help answering any questions concerning purchasing, selling or chartering a yacht, please call **+1(954)274-4435**

TABLE OF CONTENTS

TABLE OF CONTENTS	2
SPECIFICATIONS	4
Overview	4
Basic Information	4
Dimensions	4
Speed, Capacities and Weight	4
Accommodations	5
Hull and Deck Information	5
Engine Information	5
DETAILED INFORMATION	6
Walk Through	6
Salon	6
Dining	7
Pilothouse	7
Foyer	8
Day Head-Port	9
Galley	9
Master Stateroom	9
Guest Stateroom (P)	10
Guest Stateroom (S)	11
VIP Stateroom	11
Fly Bridge	12
Companionway	13
Crew Quarters	13
Bow	14
Aft Deck	14
Engine Room	15
Lazarette	15

Hull	16
Other Upgrades	16
Exclusions	16
Disclaimer	16
PHOTOS	18
CONTACTS	26
Contact details	26
Telephones	26
Office hours	26
Address	26

SPECIFICATIONS

Overview

SERIOUSLY FOR SALE! M/Y VENETIAN's classical exterior lines reveal an interior spaciousness with a special emphasis on detail. She is fully equipped and offers luxury accommodations for 10 guests + 4 crew.

Powered by twin 16V2000 MTU 1850 hp engines. The Venetian has all features that have made Azimut yachts famous from the sleek design to the powerful engines providing safe, fast and noiseless cruising speed of 20 knots to the luxurious, comfortable and spacious interior living areas.

VENETIAN is the best-priced 100 ft Jumbo on the market.

Basic Information

Category: Motor Yacht

Sub Category: Sport Cruiser

Model Year: 2003

Year Built: 2003

Country: Bermuda

Vessel Top: Bimini Top

Fly Bridge: Yes

Dimensions

LOA: 100' 0" (30.48m)

Beam: 21' 7" (6.58m)

Max Draft: 6' 5" (1.96m)

Speed, Capacities and Weight

Displacement: 2200000 Pounds

Water Capacity: 528 Gallons

Holding Tank: 415 Gallons

Fuel Capacity: 4300 Gallons

Accommodations

Total Cabins: 4

Total Heads: 5

Hull and Deck Information

Hull Material: Fiberglass

Engine Information

Engines: 2

Manufacturer: MTU

Model: 16V 2000 M91

Engine Type: Inboard

Fuel Type: Diesel

DETAILED INFORMATION

Walk Through

The Azimut 100 Jumbo is a product of the advanced technological know how and exclusive construction experience that lie at the heart of Azimut's splendid mega yachts. Everything on board the Azimut 100 Jumbo has been designed to give you more room, like the spacious flybridge. The garage has a hydraulically operated transom door that converts into a broad swim platform for easy access to the sea.

The unmistakable allure of the Azimut 100 Jumbo is created in striking rounded lines, illustrating the perfect marriage of harmony and function. The elegant exterior profiles, painstaking attention to detail and the soft, gently flowing lines of the interior, mark an era in contemporary yacht design. On the flybridge of the Azimut 100 Jumbo you can always savor the very highest standards of comfort and the sheer pleasure of life at sea, be it a glamorous party or an intimate meal at the large teak table surrounded by spacious, welcoming rounded sofas designed in Azimut's inimitable style. Forward of the table is a granite topped wet bar with three (3) stools. The Azimut 100 Jumbo's huge cockpit gives you the freedom to relax and enjoy the shade in an area where there is never a shortage of room to move around. Simply sit back and savor your surroundings. The lacquered teak table and chairs make this fantastic alfresco dining area for 8 to 10 guests. The entrance to the salon is the first of many signs of a warm welcome.... all you need to do now is sit back and relax on the sofa or over-stuffed armchairs. The formal dining area is forward of the salon which invites you to relax and discover the sheer joy of dining in luxurious tranquility. The guest cabins on the lower accommodations deck give you further reason to appreciate the exclusive synergies with options inspired by Benetti mega yachts. The owner's suite amidships encompasses the full beam of the yacht. The dressing room leaves plenty of space and scope for your own styles. Stunning Italian marble and beautiful high gloss cherry wood cabinetry bring out all the personality and class of a bathroom in which feelings of wellbeing begin, with a real treat for the eyes. The forward VIP cabin can be mistaken as the owner's cabin in any other yacht, and the port and starboard twin guest staterooms will assure all of your family and guests ultimate comfort and privacy.

Salon

- Laminate sole with area rug
- Built-in cabinetry with burl counters, port and starboard
- Television, port outboard in locker on electric lift
- Bookshelves, port and starboard forward
- Custom 2-place sofa, starboard
- 2 Custom chairs,
- Draperies to aft windows and sliding doors

Main Salon Aft Door Entry

- Laminate sole
- Tambour drop door to media storage
- Denon Multi Zone receiver/amplifier
- Sony 5 dvd/cd Changer
- Panasonic 42' LCD TV
- 5x Bose speaker surround sound
- 2x Poly Planer outdoor speakers (Aft Deck)

Upgrades

- TV - 2014
- Drapes and Cushions - 2016
- Overhead panels (new fabric) – 2016
- Starboard forward Air Handler - 2014
- Starboard aft Air Handler - 2016

Dining

- Access through lobby
- Dining Table with glass table and eight chair
- Cabinets to store dishes, glasses and cutlery
- Ceiling with recess in lacquered wood
- Curtains, upholstery and carpet

Pilothouse

- Access through staircase from lobby
- Console in burl wood
- Adjustable helm seat
- Two seats against aft bulkhead
- Area for maps and map drawer
- Cabinets

HELM STATION INCLUDES:

- Main engine controls with synchronizer
- Main engines and instruments for navigation
- Electrical panel, rudder angle indicator
- Trim tabs control
- Rudder pump control
- Compass, wipers
- Horn
- Navigation lights

- Anchor winches
- Search light controls
- Fire extinguisher electro-pump control
- Maneuvering intercom connecting fly bridge
- Main deck and engine room
- Fuel electric pump
- Gray and black water electric pump
- Bilge electric-pump controls
- High bilge water level alarm
- Fuel level gauge
- Fresh water gauge
- Dimmer for console lights
- Teak and holly steps up to flying bridge
- 2x MTU Main Engine digital display units.
- 2x Garmin 4212 Chartplotters
- 1x Garmin GS10 Wind,Speed, Depth instrument
- 1x Raymarine Autohelm autopilot control
- 1x generic video display screen for Aft deck and engine room cameras
- 1x ICS Navtec display
- 1x Standard Horizon Eclipse VHF
- 1X Trac Stabilizer control screen

Updates

All Garmin instruments, Video display, Cameras and VHF - 2014

MTU displays Port -2016. Starboard -2014

2x Air Handlers under bench seat - 2016

UNDER WHEELHOUSE

- Electrical distribution panel, aft
- Overhead light in safety cage
- Trac digital stabilizer unit
- MTU electric units

Foyer

- Lobby, located on starboard side forward of salon, allows the access to dining area and galley
- Staircase to wheelhouse and lower deck
- Watertight door to side walk (starboard side)

Day Head-Port

- Marble sole
- Vacuflush head
- Custom vanity with storage, marble counter with porcelain sink with hot and cold-water faucets
- Mirror above sink
- Washer and Dryer unit

Galley

- Access through both dining area and watertight door on port side of superstructure
- Country Kitchen design
- Granite flooring
- Counter top are granite
- Bulkheads in wood
- Access to crew quarters

Equipment in Galley

- GE Double door Refrigerator
- GE Oven
- GE Wine Fridge
- GE Cooktop
- GE Washing Machine
- GE Dryer
- LG Dishwasher
- Sub Zero Double Drawer fridge/freezer
- Frigidaire Microwave
- Insignia 19' LCD TV
- Alpine stereo head unit w/ 2 speaker

Upgrades

- Dryer, Dishwasher, Cooktop – replaced in 2014
- TV – 2014
- Washing Machine – 2016
- Galley bench seat cushions Re- upholstered 2016
- Starboard Air Handlers under bench - 2016

Master Stateroom

- Island King berth, centerline, with drawers, mirrored panel aft at berth

- Carpeted sole
- 3 Drawer nightstand, port and starboard, each with table lamp
- Philips flat screen television with integrated DVD player
- Portholes, 2 port and 2 starboard, with Stainless Steel storm covers
- Cruisair SMX II air conditioning control, starboard
- Settee, port, with indirect lighting
- Built-in bureau with storage drawers
- Walk-in closet, port, with carpet, overhead lights, shelves, drawers, owner's safe and 3 storage drawers aft

MASTER STATEROOM HEAD

- Marble tiled sole
- Overhead panels with recessed lights, blower, air conditioning vent
- Porthole Stainless Steel storm cover pull-down pleated drop shades
- Vacuflush head
- Bidet
- Linen pantry, starboard aft
- Vanity with marble counter, porcelain sink with hot and cold faucets, storage below, 4 drawers
- Curved locker at vanity, port and starboard
- Shower stall with door, teak grate sole, showerhead on hose with wall adjustable mount, hot and cold-water faucets, bench seat, spray nozzles

Guest Stateroom (P)

- 2 x Twin berths
- Pullman berth, inboard
- Porthole with Stainless Steel storm covers
- Nightstand with 3 drawers
- Reading lamps above nightstand
- Mirror above nightstand
- Hanging locker with light
- Cruisair SMX II air conditioning control
- Sharp LCD television
- Sony DVD player

PORT GUEST HEAD

- Marble sole
- Vacuflush head
- Vanity with marble counter, porcelain sink,
- Storage lockers
- Porthole with Stainless Steel storm cover

- Shower stall with teak grate sole, hot/cold showerhead on hose with wall mount

Guest Stateroom (S)

- 2 x Single berths with mattresses, 2 drawers inboard,
- Pullman berth, inboard
- 2 Portholes with Stainless Steel storm covers,
- Nightstand with 3 drawers
- 2 Reading lamps above nightstand
- Hanging locker
- Cruisair SMX II air conditioning control
- Beveled mirrors, forward
- Sharp LCD television
- Sony DVD player

STARBOARD GUEST STATEROOM HEAD

- Marble sole
- Vacuflush head
- Vanity with marble counter, porcelain sink
- Storage locker
- Porthole with Stainless Steel storm cover
- Shower stall with teak grate sole, hot/cold shower head on hose with wall mount, bi-fold door

VIP Stateroom

- Queen island berth storage drawers below
- 2 Drawer nightstand, port and starboard, each with reading lamp
- Hanging locker, starboard
- Porthole with Stainless Steel sea covers, port and starboard
- Sharp LCD television
- Sony DVD player
- Beveled mirror panels on forward bulkhead
- Settee, port, with storage
- Cruisair SMX II air conditioning control panel
- Sony CDX-L400X AM-FM/CD player

VIP STATEROOM HEAD

- Marble sole
- Vacuflush head
- Vanity with marble counter, porcelain sink, hot and cold water faucet; storage

- Bulkhead mirror, aft
- Porthole with storm cover
- Shower stall with teak grate sole; hot/cold showerhead on hose with wall mount; bi-fold door
- Storage lockers, outboard

Fly Bridge

- Access through the internal staircase in the wheelhouse & the external staircase in the aft cockpit
- Flybridge helm includes:
- Full enclosure with soft-top,
- Main engine controls.
- Instruments for navigation
- Trim tab control/indicator
- Rudder angle indicator
- Forward anchor winch controls
- Electric search light, navigation lights & electric horn controls
- Helm seat (port side)
- Observation seat (starboard side)
- Wet bar with Granite top and sink
- Three (3) bar stools
- Large Teak table with three (3) curved fiberglass sofas
- Fiberglass arch with navigation lights & antennas
- Courtesy lights & watertight stereo speakers
- Windscreen in Plexiglas with frame
- Stainless steel handrails

Flybridge Electronics

- 1x Garmin 4212 Chartplotter
- 1x Raymarine VHF
- 1x Garmin GS10 wind instrument display
- 1x Raymarine Autohelm autopilot control
- 1x Fusion UD650 marine stereo head unit
- 1x Helm remote for UD650 STEREO UNIT
- 4X JL Audio speakers

Updates

- MTU Main Engine controls - 2016
- All Garmin instruments including:
- 1x 4' 4K Radar Array
- 1x 24' Radar dome

- All transducers, AIS Transmitter, Heading sensor -2014
- Fusion head unit, remote and speakers -2016
- Soft Top sun shade – 2014
- All bench seat cushions - 2014
- Stratoglass Bridge enclosure – 2015

Companionway

- Carpeted sole
- Mirrored panels, port and starboard
- Carpeted steps to salon with courtesy lights

Crew Quarters

- Access through watertight door on port side (galley) and forward hatch on superstructure
- Two cabins and two heads
- Vacuflush head and washbasin
- Cabinets
- Air extractor
- Bulkheads, fabric, curtains

STARBOARD CABIN

- Vinyl sole
- Vinyl overhead panels with recessed lights
- Porthole
- Upper and lower single bunk
- Upper and lower reading light
- Cruisair SMX II air conditioning control panel
- 2 Door lockers at lower berth
- Hanging locker with light
- Vinyl sole

CAPTAIN'S QUARTERS (p)

- Vinyl overhead panels with recessed lights
- Porthole with curtains
- Double berth, lower
- Reading light at each berth
- Cruisair SMX II air conditioning control
- 2-door storage locker, outboard
- Hanging locker with light
- Single upper berth

- Sony AM-FM/CD player

CAPTAIN AND CREW HEADS

- Vacuflush head
- Vanity with marble counter, porcelain sink, hot/cold water faucet; storage
- Mirror, forward
- Storage, outboard
- Shower stall, inboard, with bi-fold door, teak grate over sump drain; overhead light; showerhead on hose with hot/cold water faucet, wall mount

UNDER CREW COMPANIONWAY STEPS

- Bow thruster unit with oil reservoir
- 2 x Head vacuum tanks
- Electric hot water heater

Bow

- 2 x 3500 W, 24 V reversible winches,
- Anchor winches control
- Two 210 lb. anchors
- 300' of anchor chain, port and starboard
- Chain storage with drain and washing chain pump
- Built-in stainless steel bow protection
- Two side peaks on superstructure
- Plug for hose to wash main deck
- Bow seating Cushions
- Sun Pad

Aft Deck

- Teak over fiberglass deck
- Stainless steel handrails and stanchions on varnished teak cap rails
- Two electrical wrapping winches
- Curved sliding door for salon in tempered glass and stainless steel frame
- Staircase in fiberglass with teak steps from aft cockpit to fly bridge
- Teak table with stainless steel basis with chairs
- Electro-hydraulic retractable gangway in stainless steel and teak
- Transom with electro-hydraulic opening convertible into a wide swim platform
- Teak swim platform when the transom-door is open
- Hatch to access to garage on the floor of the aft deck
- Shore power inlet in the bulwark

- Water shore connection on transom
- Shower on transom (starboard side)
- Lights for external deck placed on both sides of superstructure and on aft cockpit ceiling
- Windows in high thickness tempered glass and frame in AISI 316 steel
- Three fairleads with cleats in stainless steel (each side)
- Box water filler on each side of the superstructure
- Fuel filler on each side of the superstructure
- Watertight door to access to engine room on port side
- Watertight door to access to galley on port side
- Watertight door to access to the lobby on starboard side

Engine Room

- Entrance from port deck with storage
- 220-volt and 24-volt electrical distribution panels
- 2 fuel gauges on electrical panel
- 65 kW Kohler generator with 10 289 hours, starboard; 1800rpm; Racor filter
- 65 kW Kohler generator with 9723 hours, port; 1800rpm; Racor filter
- Overhead hatch as alternate entrance with folding ladder
- Dual Racor fuel filters for each engine
- Racor filters to each generator
- 220-volt fire pump
- 2 MTU electronic control panels
- 2,790-liter Aluminum fuel tanks, port and starboard
- Air conditioning raw water circulating pump
- Dual compressor air conditioning chilled water system
- Oil change pump to manifold
- Freshwater system filter
- Two 24-volt battery chargers
- Bow thruster reservoir
- Dripless shaft seals
- Electric hydraulic steering pump
- 12-volt battery charger

Lazarette

- 2 Water heaters
- Emergency hydraulic steering unit
- Hydraulic lift for transom
- 7 Step stainless steel ladder to aft deck hatch
- Circuit breakers panel

- Fiberglass fuel tank, centerline under sole
- Dockside water system
- Overhead fluorescent lights
- Air compressor with storage tank
- 2 x Shore power transformer

Hull

Bottom

- 4-blade nibral propellers
- Stabilizer fin, port and starboard
- Trim tabs, port and starboard
- Trim tab extension, centerline
- Bow thruster with grates

Topsides

- Foldout transom door to lazarette
- Fiberglass swim platform
- Showerhead on hose with hot/cold faucet, in starboard locker
- Passarelle, centerline
- Built in Steps on transom, with starboard handrail
- 250 lb. Navy anchor, port and starboard, each with 300' of chain

Other Upgrades

- Upholstery upgrades on all outside/deck cushions, foredeck and bunny pad – 2014
- Main AC Control Panel in engine room – 2014
- AC Raw and Circulating Pumps – 2014
- Main Engine and Generator maintenance (RPM Diesel) – 2014

Exclusions

Owner's personal belongings.

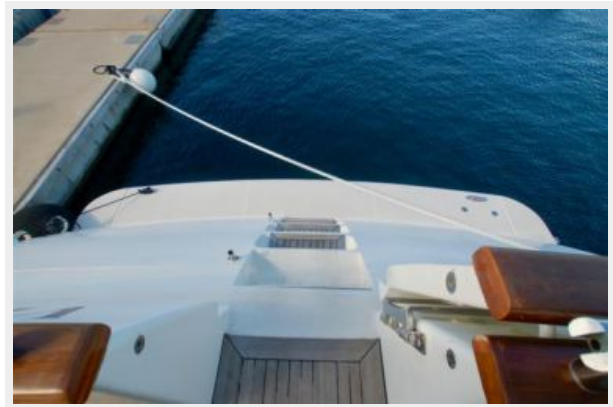
Disclaimer

The Company offers the details of this vessel or yacht in good faith but cannot guarantee or warrant the accuracy of this information nor warrant the condition of the vessel. A buyer should instruct his representatives, agents, or his surveyors, to investigate such details as the buyer desires validated. This vessel or yacht is offered subject to prior sale, price change, or withdrawal

without notice.

PHOTOS



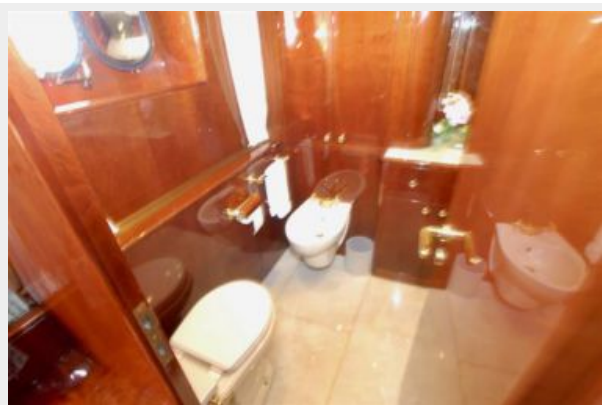














CONTACTS

Andrey Shestakov, leading yacht broker of the sales department of Shestakov Yacht Sales Inc. Shestakov Yacht Sales Inc., the official representative of the Miami/Fort Lauderdale FL headquarters.

Contact details

Email: **andrey@shestakovyachtsales.com**

Web: shestakovyachtsales.com/en/

Telephones

USA: **+1(954)274-4435**

Office hours

Monday – Saturday: **9:00 - 21:00 EDT**

Sunday: **closed**

Address



Harbour Towne Marina, 850 NE 3rd St,
STE 213, Dania, FL 33004