

NANA MARIA — TAYANA



Судостроитель: TAYANA

Год постройки: 2003

Модель: Палубный парусник

Цена: ЦЕНА ЯХТЫ ПО ЗАПРОСУ

Местонахождение: United States

Длина общая: 58' 0" (17.68m)

Ширина: 16' 8" (5.08m)

Макс. осадка: 7' 2" (2.18m)

Купить **Nana Maria — TAYANA** а также выбрать подходящую вам яхту из нашего каталога яхт вам поможет опытный яхтенный брокер Андрей Шестаков. На сегодняшний день компания **Shestakov Yacht Sales Inc.** имеет большое количество яхт в собственном списке продаж, а также тесно сотрудничает со всеми крупными яхтенными производителями по всему миру.

Для того чтобы купить яхту **Nana Maria — TAYANA** а также проконсультироваться по любому вопросу связанному с покупкой, продажей, чартером яхт позвоните по телефону **+7(918)465-66-44**.

ОГЛАВЛЕНИЕ

ОГЛАВЛЕНИЕ	2
ХАРАКТЕРИСТИКИ	3
Обзор	3
Основная информация	4
Размеры	4
Скорость, вместимость и масса	4
Размещение	4
Корпус и палуба	4
Информация о двигателе	4
ПОДРОБНОЕ ОПИСАНИЕ	5
Accommodations & Layout	5
Galley	5
Sails & Rigging	6
Mechanical	6
Electrical	7
Electronics/Navigation Equipment	7
Deck Equipment	8
Deck & Hull	9
Исключения	9
Отказ от ответственности	9
ФОТОГРАФИИ	10
КОНТАКТЫ	24
Контактная информация	24
Телефоны	24
Время работы	24
Адрес	24

ХАРАКТЕРИСТИКИ

Обзор

- **PRICE REDUCTION FOR IMMEDIATE SALE!**
- **Very well equipped and nicely maintained**
- **Proven cruiser, never chartered, original owners**
- "Nana Maria" will turn heads at every dock and underway! The sleek lines of her hull are accentuated with a striking rich red hull and classic teak decks. The Tayana 58 is known for its sea kindly and performance ability. The modern deck salon ports will appeal to all offering great natural light and a spacious interior in this 3 cabin, 2 head layout.
- Luxurious accomodations with abundant provisioning room. All lines lead to the cockpit with electric winches and bowthruster for ease of handling. You will enjoy the generous fully enclosed center cockpit as well as the roomy aft deck with corner seats and wide walk arounds. The sugar scoop transom has deep steps for ease of boarding and a swim platform including SS grab rails.
- "Nana Maria" is fully equipped to sail away today!
- Upgraded 160 hp Yanmar, 2072 hours
- Deck Salon with abundant natural light and many opening ports and hatches provide good ventilation
- Spacious Center Cockpit
- Lines leading to cockpit for ease of handling
- Electric winches for furling headsail and cutter
- Electric Main furling system with in mast mainsail
- Bowthruster
- SSB, Radar, GPS, Autopilot, AIS Transceiver
- Tracvision, Sirius ready radio, Iridium Sat phone
- Sugar scoop transom with dive platform and swim ladder
- Glue down teak decks, wide walk around, 3' stanchions
- Generator
- Watermaker
- Reverse cycle Air Conditioning system
- Liferaft
- RIB
- Splendide Washer/Dryer
- TRANSFERABLE SLIP AT HARBORTOWN MARINA IN FORT PIERCE

Основная информация

Тип судна: Палубный парусник

Подкатегория: Крейсерская яхта

Модельный год: 2003

Год постройки: 2003

Страна: United States

Размеры

Длина общая: 58' 0" (17.68m)

Длина по ватерлинии: 45' 11" (14.00m)

Ширина: 16' 8" (5.08m)

Макс. осадка: 7' 2" (2.18m)

Трапы: 74' 0" (22.56m)

Скорость, вместимость и масса

Водоизмещение: 49500 Pounds

Вместимость воды: 250 Gallons

Вместимость сточного бака: 40 Gallons

Объем топливного бака: 250 Gallons

Размещение

Всего кают: 3

Всего ком. состава: 2

Корпус и палуба

Материал корпуса: Fiberglass

Информация о двигателе

Двигатели: 1

Производитель: Yanmar

Модель: 4LHA-HTP

Тип топлива: Diesel

ПОДРОБНОЕ ОПИСАНИЕ

Accommodations & Layout

- Luxurious and comfortable accommodations
- Desirable 3 cabin layout with 2 heads
- Teak and holly sole
- Warm teak joinery and cabinetry throughout
- Deck Salon windows offer abundant natural light
- Curved settee with sand leather upholstery
- Folding circular teak dining table
- Custom tile artwork
- Upholstered Loveseat opposite
- Forward facing navigation desk with upholstered seat
- Gourmet galley leading aft
- Queen size centerline island berth with comfortable mattress
- Teak side tables, hanging lockers, bureau drawers and overhead bins
- Private ensuite head and shower, freshwater electric flush toilet
- Midship cabin with 2 bunks with leecloths, hanging locker
- Guest cabin forward has a generous V berth, drawers and hanging lockers
- Guest head and shower, freshwater electric flush toilet
- Opening hatches with Oceanaire shades
- Screens for all hatches and portlights
- Solartex window covers inside and out (2 sets)
- 12V fans
- Reading lights
- All interior lights LED
- Abundant storage and provisioning room

Galley

- Double sided galley with all the modern amenities within easy reach
- Corian counters with teak fiddles
- Generous working space, deep bin storage, pantry cabinets and drawers
- Princess 3 burner, gimballed propane stove/oven with safety bar
- (2) 20# propane tanks in vented locker
- LPG solinoid
- Frigaboat keel cooled top and front loading refrigeration
- Front loading freezer
- Microwave/Convection oven
- ULine Icemaker
- Double SS sinks inboard

- Pressure water system
- Hot water heater
- Watermaker 120V 30 gph
- Dishes, pans, utensils

Sails & Rigging

- Keel stepped mast
- Triple spreaders, aft swept
- Forestay, shrouds, genoa roller furler and running backs (2012)
- Selden Electric In mast furling Mainsail (2003)
- Profurl roller furling Staysail (2003)
- Profurl roller furling Genoa (2003)
- Spinnaker (2005)
- Sails in good condition
- All control lines led aft to cockpit thru line clutches
- (2) #66 Lewmar Electric primary winches
- (2) #58 Lewmar ST winches
- (2) #48 Lewmar two speed halyard winches on mast
- #44 Lewmar electric two speed winch
- #50 Lewmar electric mainsheet winch
- #44 Lewmar manual mainsheet winch
- Selden Rodricker rigid adjustable boom vang
- Traveller behind helm seat
- Adjustable backstays
- Color coded running rigging
- Downwind pole
- Navigation lights
- LED Deck lights

Mechanical

- Walk in mechanical room with 3 sided engine access
- Upgraded 160 hp Yanmar 4LHA-HTP hours 2072
- Well insulated mechanical room also houses generator and watermaker with a working counter top
- Vetus Bowthruster with controls at helm
- 250 gallon aluminum fuel tank
- Racor filter/water separator engine mounted secondary filter
- 1 1/2" SS prop shaft
- PSS shaft seal
- Bronze packing gland

- Raw water cooled exhaust
- Engine gauges, tach, temp, temp oil pressure, volts
- Edson pedestal, cable steering
- Perko sea strainer with sight glass
- Bronze seacocks
- Reverso oil changing system
- (3) Marine Air reverse cycle Air Conditioning system, 3 compressors with digital control
- Sea Recovery Watermaker 30 gph
- Shurflow water pump
- 250 gallon water tank
- Hot water tank
- (2) Raritan electric freshwater flush to holding tank
- Jabsco macerator
- Shower sump pump
- Whale Gusher bilge pump
- Shurflo bilge pump
- Tank monitors

Electrical

- Northern Lights Luger 9.4kw generator 4072 hrs
- 4 12v DC 8D Lifeline AGM House bank batteries (2012)
- 1 12V DC 4D Lifeline AGM start battery (2012)
- 2 4D AGM Lifeline bow thruster bank (2012)
- 1 4d Lifeline AGM Generator start battery (2017)
- Guest battery isolator switch
- AC and DC Electrical panel
- Engine mounted alternator
- Freedom charger 12V 80 amp
- Bonding system
- (2) 50 amp Shore power inlets
- Shore power cord
- GFCI outlets
- All interior lights LED
- Reading lights
- Recessed overhead lights

Electronics/Navigation Equipment

- (2) Raymarine ST 7001S Autopilot with 2 control heads
- Raymarine RL 80 Radar
- Raymarine Chartplotter/GPS Raymarine

- M1500 Monitor in cockpit
- Raymarine ST 60 Speed, Wind and Depth
- Raymarine electronics are 2003
- Lawrence backup Chartplotter 2012, also used as AIS screen
- Icom 602 VHF
- Icom 802 SSB
- Richtie compass
- Brass clock and barometer
- Siruis ready Stereo
- Speakers
- (2) Flatscreen TV's
- Tracvision
- Iridium Sat Phone
- AIS Transceiver

Deck Equipment

- Simpson Lawrence Electric windlass with foot controls, vertical gypsy/capstan
- Below decks chain locker
- SS CQR
- SS Delta
- SS Anchor platform
- Double anchor rollers
- Liferaft in SS cradle mounted on aft deck w/cover
- Caribe RIB
- 25hp Yamaha Enduro outboard
- Outboard hoist
- Tarpon Kayak
- Bimini and dodger with strong SS frame and handholds
- Full side enclosure and additional side shades
- Cockpit cushions
- Raised helm seating
- Long bench cockpit seating
- Leather wrapped wheel
- Teak cockpit table and drink holders
- (2) varnished teak corner seats
- SS stern rail with center opening gate to swim steps and dive platform
- Propane BBQ grill w/cover
- Lazerette storage aft
- Emergency tiller
- PFD's
- Inflatable PFD's, harness and hookons
- Throwable cushion

- Fire extinguishers

Deck & Hull

- The hull is comprised of FRP with a modified fin keel and skeg mounted rudder
- 16' beam offers generous interior accommodations as well as wide side decks
- Glue down teak decks
- Aluminum toe rail
- SS stern rail
- Tall 3' SS stanchions and double lifelines with side gates
- Heavy SS mooring cleats
- SS grab rail on cabin top
- SS bow pulpit
- Rubrail
- Sliding plexiglass companionway hatch
- Plexi weather boards
- Lewmar opening hatches
- Opening ports
- Fixed deck salon ports
- Last bottom paint spring 2017

Исключения

При продаже яхты исключаются личные вещи владельца.

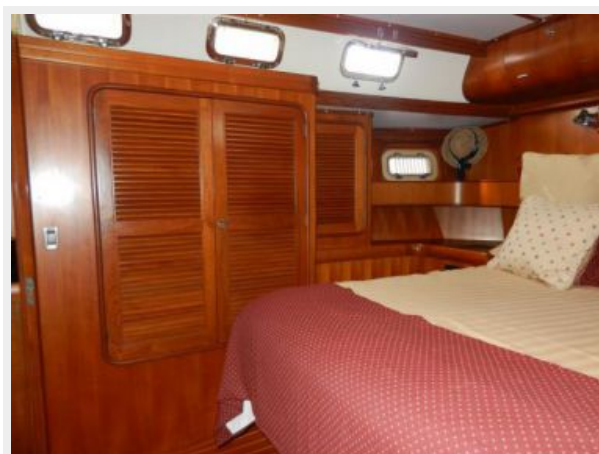
Отказ от ответственности

Компания предоставляет описание судна или яхты добросовестно, но не может гарантировать точность этой информации, а также не ручается за техническое состояние. Покупатель должен проинструктировать своих агентов или оценщиков исследовать представленную информацию более подробно, по собственному желанию. Продажа судна или яхты, изменение цены или снятие с продажи будет происходить без предварительного уведомления.

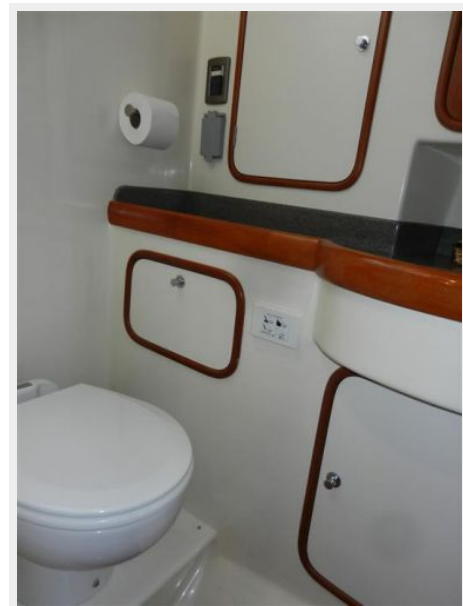
ФОТОГРАФИИ



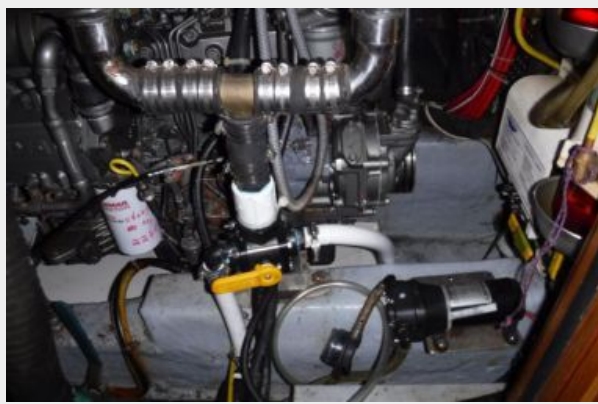
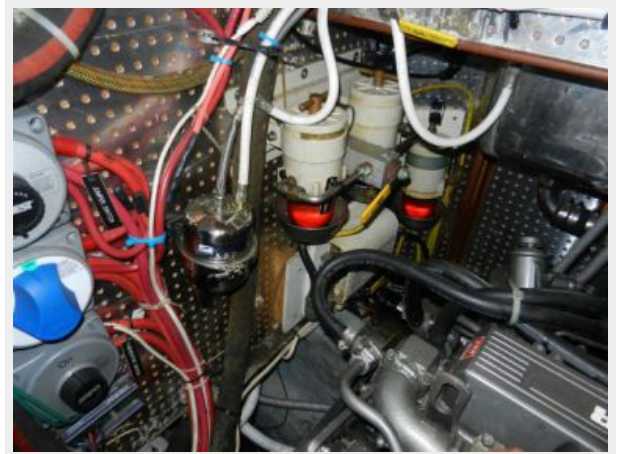






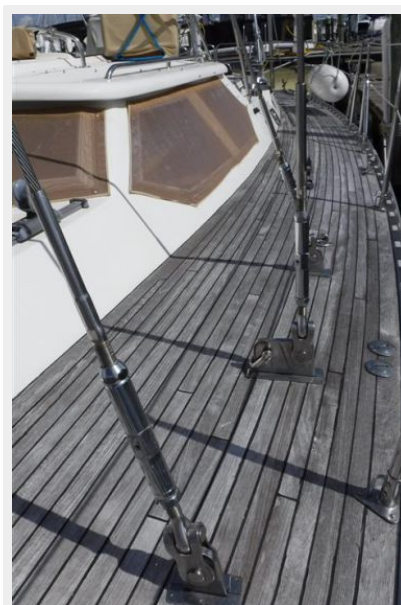






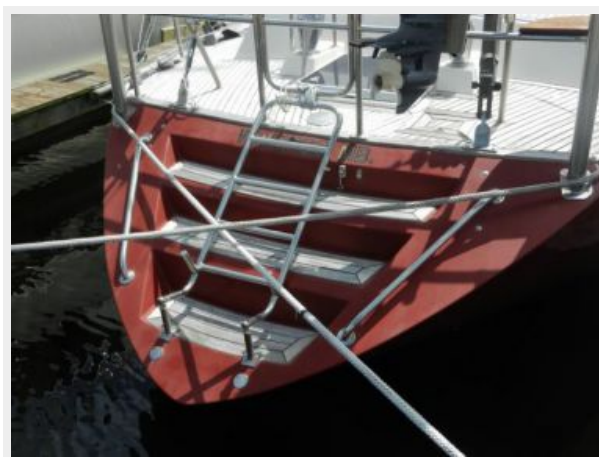














КОНТАКТЫ

Андрей Шестаков (Andrey Shestakov) – ведущий яхтенный брокер отдела продаж яхт и судов компании Shestakov Yacht Sales Inc. Официальный представитель Shestakov Yacht Sales Inc. для русскоговорящих клиентов в центральном офисе компании в Майами/Форт Лодердейл/Флорида/США.

Контактная информация

Email: andrey@shestakovyachtsales.com

Web: shestakovyachtsales.com

Телефоны

Краснодарский край: **+7(918)465-66-44**

США, Майами, Флорида: **+1(954)274-4435**

Время работы

Понедельник – Суббота: **9:00 - 21:00**
EDT

Воскресенье: **Закрето**

Адрес



Harbour Towne Marina, 850 NE 3rd St,
STE 213, Dania, FL 33004