

46FT 2011 ROBERTSON & CAINE LEOPARD — ROBERTSON & CAINE



Builder: ROBERTSON & CAINE

Year Built: 2011

Model: Catamaran

Price: PRICE ON APPLICATION

Location: United States Virgin Islands

LOA: 46' 0" (14.02m)

Beam: 24' 10" (7.57m)

Max Draft: 4' 5" (1.35m)

Our experienced yacht broker, Andrey Shestakov, will help you choose and buy a yacht that best suits your needs 46ft 2011 Robertson & Caine Leopard 46 — ROBERTSON & CAINE from our catalogue. Presently, at Shestakov Yacht Sales Inc., we have a wide variety of yachts available on our sale's list. We also work in close contact with all the big yacht manufacturers from all over the world.

If you would like to buy a yacht 46ft 2011 Robertson & Caine Leopard 46 — ROBERTSON & CAINE or would like help answering any questions concerning purchasing, selling or chartering a yacht, please call **+1(954)274-4435**

TABLE OF CONTENTS

TABLE OF CONTENTS	2
SPECIFICATIONS	3
Overview	3
Basic Information	3
Dimensions	3
Speed, Capacities and Weight	3
Accommodations	4
Hull and Deck Information	4
Engine Information	4
DETAILED INFORMATION	5
Specifications	5
Exclusions	6
Disclaimer	6
PHOTOS	8
CONTACTS	19
Contact details	19
Telephones	19
Office hours	19
Address	19

SPECIFICATIONS

Overview

2011 ROBERTSON AND CAINE LEOPARD 46

BROKERS REMARKS: Snow Dog is one of the newest Leopard 46's to come to market, being a 2011 model. She is equipped with the preferred upgraded Yanmar engine package.

The owner has owned her for a number of years now, and has all of the maintenance records available upon request, as well as a recent survey.

She was sitting on the hard in Puerto Rico where she safely rode out Hurricane Maria with only minor gelcoat scratches. The work has already started, and should be completed before the end of October. DYSID:3140443

Basic Information

Category: Catamaran

Sub Category: Cruising Sailboat

Model Year: 2011

Year Built: 2011

Country: United States Virgin Islands

Dimensions

LOA: 46' 0" (14.02m)

LWL: 44' 7" (13.59m)

Beam: 24' 10" (7.57m)

Max Draft: 4' 5" (1.35m)

MFG Length: 46' 4" (14.12m)

Speed, Capacities and Weight

Displacement: 24206 Pounds

Accommodations

Total Cabins: 4

Total Berths: 5

Total Heads: 5

Hull and Deck Information

Hull Material: Fiberglass

Engine Information

Engines: 2

Manufacturer: Yanmar

Model: 4JH5E

Engine Type: Inboard

Fuel Type: Diesel

DETAILED INFORMATION

Specifications

Specs

Builder: Robertson & Caine Designer: Morrelli & Melvin Flag of Registry: British Virgin Islands
Hull Shape: Catamaran

Dimensions LOA: 46 ft 4 in Beam: 24 ft 10 in LWL: 44 ft 7 in Maximum Draft: 4 ft 5 in Displacement:
24206 lbs

Engines

Engine 1: Engine Brand: Yanmar Engine Model: 4JH5E Engine Type: Inboard Engine/Fuel
Type: Diesel Propeller: 3 blade propeller Drive Type: Sail drive Engine Power: 54 HP Engine 2:
Engine Brand: Yanmar Engine Model: 4JH5E Engine Type: Inboard Engine/Fuel Type: Diesel
Propeller: 3 blade propeller Drive Type: Sail drive Engine Power: 54 HP

Tanks

Fresh Water Tanks: 2 Plastic (103 Gallons) Fuel Tanks: 2 Aluminum (92 Gallons) Holding Tanks:
2 (23 Gallons)

Accommodations

Number of single berths: 1 Number of double berths: 4 Number of cabins: 4 Number of heads: 5

CONSTRUCTION

- HULL CONSTRUCTION: Composite Glass Reinforced Plastic (GRP) Sandwich with Balsa core
- DECK MATERIAL: Textured GRP
- RUDDER TYPE: Balanced Spade Rudder
- KEEL TYPE: Multihull
- WHERE BUILT: South Africa

SAILS AND RIGGING

- TYPE: Sloop
- SPAR MAKER/MATERIAL: Sparcraft
- STANDING RIGGING MATERIAL: Aluminium
- RUNNING RIGGING MATERIAL: Stainless steel wire
- MAINSAIL REEFING: Slab reefing

- HEADSAIL ROLLER FURLING: Profurl Titanium C430

WINCHES

- GENOA WINCHES: 2 Lewmar 54, 2-speed, Self-tailing, manual
- MAIN HALYARD WINCH: Lewmar 44, 2-Speed, Self-tailing, manual
- MAINSHEET WINCH: Lewmar 44, 2-Speed, Self-tailing, manual
- OTHER WINCHES: 2 Lewmar 14 Davit winches

INSIDE EQUIPMENT

- COOKER TYPE: Force 10, 3 burners
- GRILL: Propane
- SINK: (1) Double basin in galley
- SHOWERS: (4) plus transom shower
- HANDBASINS: 4
- UPHOLSTERY/COLOUR SCHEME: Cream naugahyde in saloon and striped cotton covers in cabins
- INTERIOR CONSTRUCTION/WOOD TYPE: Laminated marine ply

ELECTRICAL EQUIPMENT

- VOLTAGE: 12V
- ELECTRICAL CIRCUIT: 110V
- HOUSE BATTERIES: 4 Lifeline 4D 630Ah
- ENGINE BATTERIES: 2 Lifeline 2D 100Ah
- ALTERNATOR: Hitachi 80Ah

DECK EQUIPMENT

- STEERING SYSTEM: Wheel
- WARPS: 4
- FENDERS: 4
- GRILL/BBQ: Yes
- WINDLASS: Electric, Quick 1000W
- PRIMARY ANCHOR: Delta
- SECONDARY ANCHOR: Danforth

Exclusions

Owner's personal belongings.

Disclaimer

The Company offers the details of this vessel or yacht in good faith but cannot guarantee or

warrant the accuracy of this information nor warrant the condition of the vessel. A buyer should instruct his representatives, agents, or his surveyors, to investigate such details as the buyer desires validated. This vessel or yacht is offered subject to prior sale, price change, or withdrawal without notice.

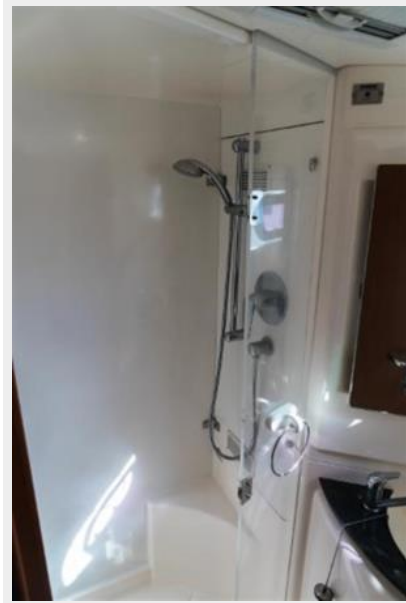
PHOTOS









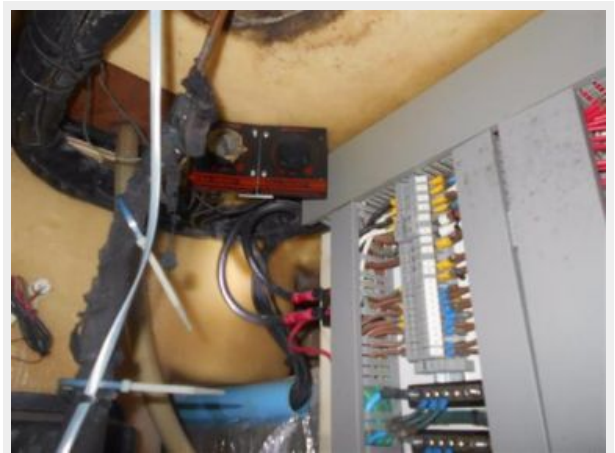














CONTACTS

Andrey Shestakov, leading yacht broker of the sales department of Shestakov Yacht Sales Inc. Shestakov Yacht Sales Inc., the official representative of the Miami/Fort Lauderdale FL headquarters.

Contact details

Email: andrey@shestakovyachtsales.com

Web: shestakovyachtsales.com/en/

Telephones

USA: +1(954)274-4435

Office hours

Monday – Saturday: **9:00 - 21:00** EDT

Sunday: **closed**

Address



Harbour Towne Marina, 850 NE 3rd St,
STE 213, Dania, FL 33004