

## DIANA RR — FONTAINE PAJOT



**Builder:** FONTAINE PAJOT

**Year Built:** 2012

**Model:** Catamaran

**Price:** PRICE ON APPLICATION

**Location:** Spain

**LOA:** 65' 0" (19.81m)

**Beam:** 32' 4" (9.86m)

**Max Draft:** 9' 2" (2.79m)

Our experienced yacht broker, Andrey Shestakov, will help you choose and buy a yacht that best suits your needs **Diana RR — FONTAINE PAJOT** from our catalogue. Presently, at Shestakov Yacht Sales Inc., we have a wide variety of yachts available on our sale's list. We also work in close contact with all the big yacht manufacturers from all over the world.

If you would like to buy a yacht **Diana RR — FONTAINE PAJOT** or would like help answering any questions concerning purchasing, selling or chartering a yacht, please call **+1(954)274-4435**

---

# TABLE OF CONTENTS

---

TABLE OF CONTENTS	2
SPECIFICATIONS	3
Overview	3
Basic Information	3
Dimensions	3
Speed, Capacities and Weight	3
Accommodations	3
Hull and Deck Information	3
Engine Information	4
DETAILED INFORMATION	5
Manufacturer Provided Description	5
Cockpit	5
Accommodations	5
Galley	7
Engines	7
Electrics	7
Sails, Mast and Boom	8
Exclusions	9
Disclaimer	9
PHOTOS	10
CONTACTS	31
Contact details	31
Telephones	31
Office hours	31
Address	31

---

# SPECIFICATIONS

---

## Overview

---

This beautiful 65' Fountaine Pajot is spacious and meticulously maintained. Motivated owner wants this boat sold!

**Not for sale to US residents while in US waters.**

## Basic Information

---

**Category:** Catamaran

**Sub Category:** Catamaran

**Model Year:** 2012

**Year Built:** 2012

**Country:** Spain

## Dimensions

---

**LOA:** 65' 0" (19.81m)

**Beam:** 32' 4" (9.86m)

**Max Draft:** 9' 2" (2.79m)

## Speed, Capacities and Weight

---

**Water Capacity:** 771 Gallons

**Fuel Capacity:** 370 Gallons

## Accommodations

---

**Total Cabins:** 4

**Total Heads:** 3

## Hull and Deck Information

---

**Hull Material:** Fiberglass

---

## Engine Information

---

**Manufacturer:** Volvo

**Engine Type:** Inboard

**Fuel Type:** Diesel

---

# DETAILED INFORMATION

---

## Manufacturer Provided Description

---

Ending several years of research and honing, this is the perfect realisation that everyone could hope for in a large sailing catamaran. Elegant and large covered cockpit, opened saloon combining lounge, dining room and galley, huge cabins with comfort levels to rival top hotels. Several relaxation areas at the rear, on the fly-bridge or in the deck saloon allow you to feel the joy of sailing while quietly taking in the sun. With the sails up and the boat under complete control from the cockpit, the large winches and functional helm guarantee fast, safe, comfortable and exhilarating sailing. Different options for the layout of the luxury cabins are available for this Flagship to meet Owners and hosts demands as closely as possible. King-size beds, sea views through the large portholes, office/library, dressing and laundry rooms, you will find all the comfort to be expected for a boat of this standing. **The wind, the finest energy**

## Cockpit

---

### Central cockpit

- Cockpit on a level
- 1 fixed teak cockpit tables (8 persons)
- 1 teak batten 4 person bench seat + 4 teak chairs
- 2 teak batten side bench seat
- 2 side Sunbathing area with mattress
- 2 lockers for life raft
- Main lighting with embedded led spotlights
- Led courtesy lighting

1 large aft sunbed

### Upper cockpit (port)

- 2 x 3 person benches with cushions
- Teak steps for access to sun-bridge
- 1 teak coffee table

## Accommodations

---

### Saloon area

- 2-seater sofa
- Bar
- Ventilation via a deck hatch

- Blind and mosquito net on the deck hatch
- 1 porthole with blind
- Lighting by embedded led spots

### Dining area

- 1 x 8 persons- wooden table convertible into coffee table
- Bench seat with stowage
- Storage volume
- Lighting by embedded spots with led and bracket lamps

### Sleeping area

- Access from the saloon through wooden door at the bottom of the stairs
- « Queen Size » bed(1.60/2.00m) with access on either side and slatted base
- Large storage volume under bed
- Bedside furniture
- Cupboard and hanging space
- Ventilation via a deck hatch
- Blind and mosquito net on the deck hatch
- 1 porthole with blind
- Main lighting by embedded led spots and 2 bedside reading lights

### Bathroom area

- Synthetic resin counter top with 2 built-in washbasins
- Hot and cold water via mixer tap
- Bathroom accessories
- Large mirror
- Separate shower with hot and cold water, mixer tap
- Automatic drainage of the grey water
- Bathroom ventilated via 1 deck hatch
- Lighting - waterproof led spotlights

### Aft cabin

- Access via a wooden door from the aft companionway
- Double bed (1,60/2,00m approx.) with slatted bed base
- Bedside cabinet
- Cupboards and hanging space
- Ventilation via a deck hatch
- Large porthole with curtain
- Blind and mosquito net on the deck hatch
- Main lighting by embedded led spots and 2 bedside reading lights
- Indirect led lighting
- 1 x 220V socket

---

## Aft bathroom

- Private access from the aft cabin
- Counter top with built-in washbasin
- Mirror
- Balneo shower cabin
- Automatic drainage of the grey water
- Electric marine toilet
- Bathroom accessories
- Ventilation via 1 deck hatch
- Lighting - waterproof led spotlights
- Teak caillebotis and seat in shower

---

## Galley

- Galley with large working top
- 2 stainless steel sinks
- 1 bin
- Hot and cold pressurized water
- Pressurized sea water
- 1 hob gas burners
- 1 electric oven
- 3 x160 l refrigeration volume
- Storage cupboards and drawers
- Space allowed for a large dishwasher (12 place settings)
- Bar
- Lighting by embedded led spots
- Ventilation via hood above cooking hob

---

## Engines

- 2 x 110hp diesel engines
- High-resistance stainless steel direct transmission shafts
- V-shaped shaft bearing bracket
- 2 three-blade fixed propeller
- Engine compartment ventilation natural intake of air + mechanical extraction of air
- Complete control panels and dual engine controls at helming station

---

## Electrics

---

### Power circuit

- 1 port engine battery 12V + 1 starboard engine battery 12V
- 2 engine alternators 12V recharging these 2 engine batteries
- Back-up manual connection between both sets of engine batteries
- 1 set of batteries for on board energy supply to port 24V
- 2 engine alternators 24V with high-performance adjustments recharging both sets of batteries for the energy supply on board
- 220V generator/50 Htz power 17.5kw approximately
- 1 x 24V/220V inverter 2 500W/60 Amps
- 1 battery charger 60A
- Distribution to 220v network : Outlets for cabins, onboard comfort, electric household appliances

## Distribution 24V

- Distribution decentralized from the 24V functions
- Protection via trip switches located in watertight lockers
- 24V switchboard at the chart table with trip switch protection for functions requiring an on/off switch – pumps, sailing lights, electronics ...

Free sockets for other equipment

## Electronics

- 1 complete navigation unit including loch, speedo, sounder, masthead fly and anemometer and repeater at the helm station
- 1 G.P.S.
- 1 V.H.F. with masthead aerial
- 1 sound system comprising : 1 radio / CD deck and MP3
- 1 shore power cord 32A

# Sails, Mast and Boom

---

## Mast and boom

- White coated aluminum mast and boom
- Full standing rigging
- 1 mainsail halyard, twin-thread low-stretch cover
- 2 genoa halyards
- 1 extra halyard
- 1 spinnaker halyard
- 1 boom topping lift
- 1 lazy bag
- 3 reef lines
- 2 lazy-jacks
- 2 flag halyards



- 1 self-tailing winch at mast step for halyards and reef lines
- Jammers on all halyards, reef lines and topping lift
- Underway, running and anchorage lights
- Deck lighting

## Sails

- Fully-battened mainsail, square top tri-radial cut, 134 m<sup>2</sup> (1442.36 sq ft), high quality hydranet fabric, 3 reef lines and ball bearing traveler
- Genoa high quality hydranet fabric 78 m<sup>2</sup> (839.59 sq ft)
- Genoa roller furler led back to helm station

## Exclusions

---

Owner's personal belongings.

## Disclaimer

---

The Company offers the details of this vessel or yacht in good faith but cannot guarantee or warrant the accuracy of this information nor warrant the condition of the vessel. A buyer should instruct his representatives, agents, or his surveyors, to investigate such details as the buyer desires validated. This vessel or yacht is offered subject to prior sale, price change, or withdrawal without notice.

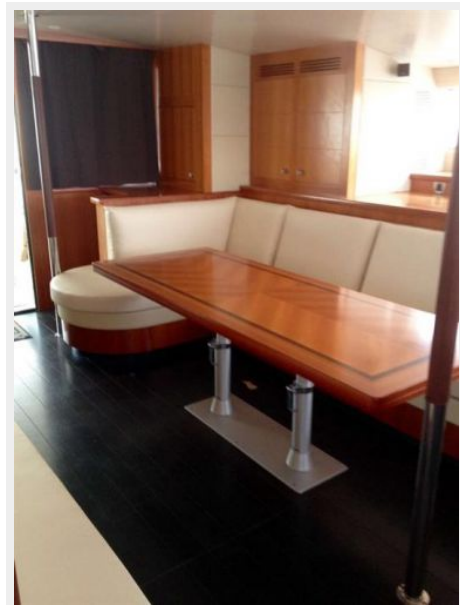
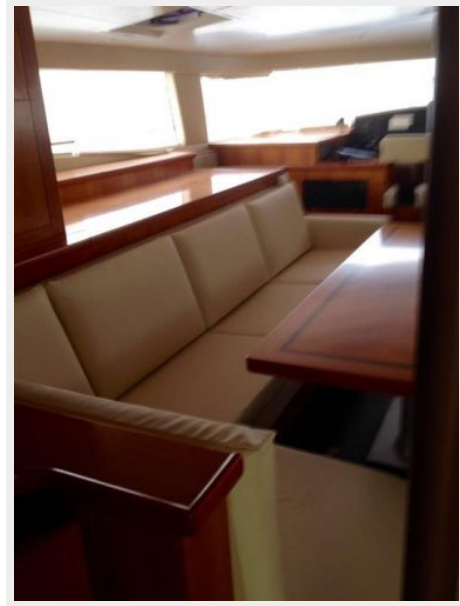
# PHOTOS

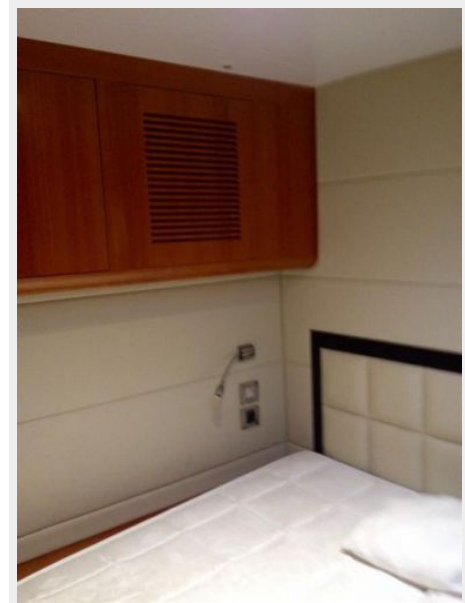
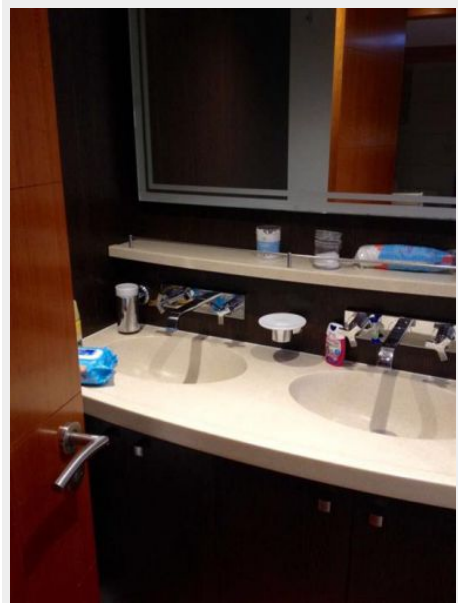
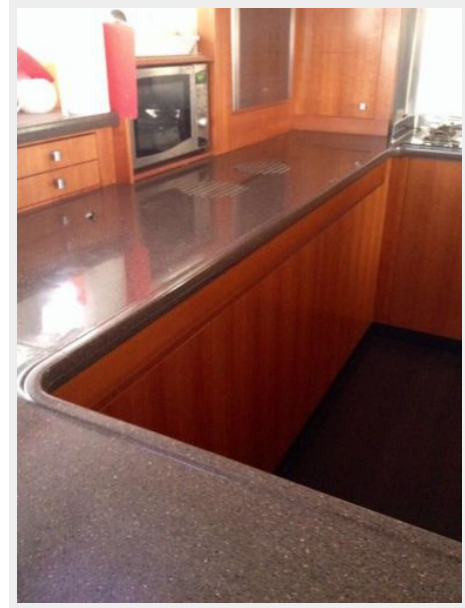
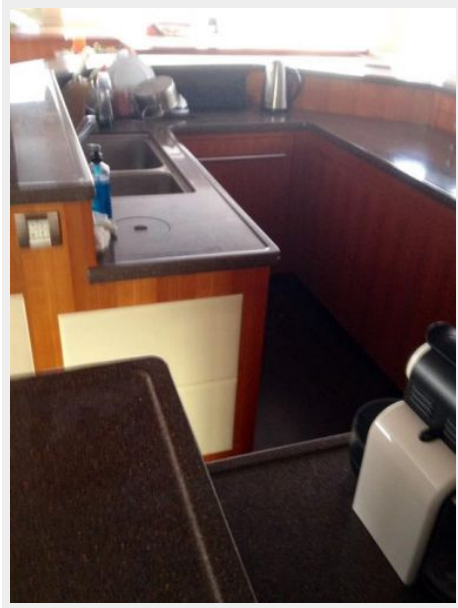


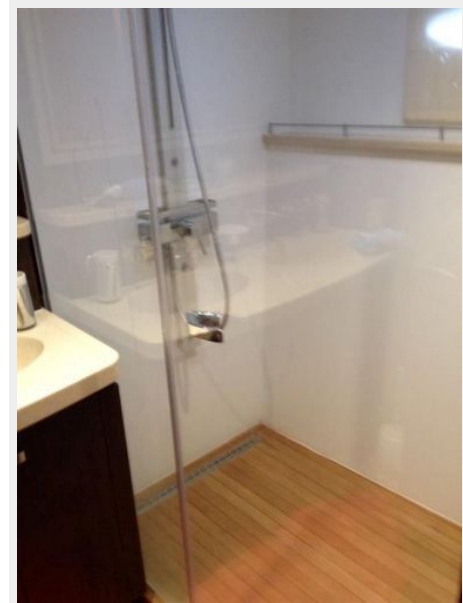
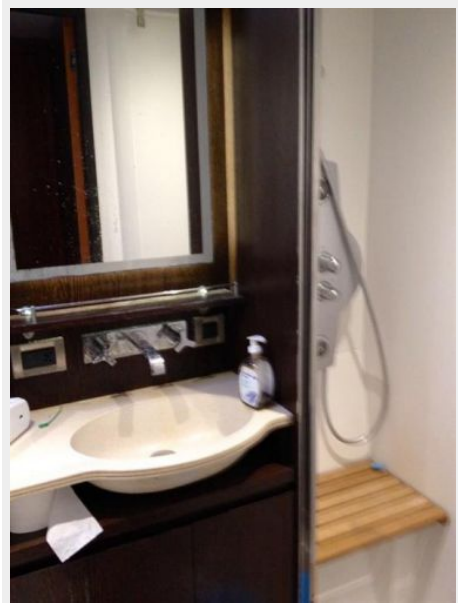
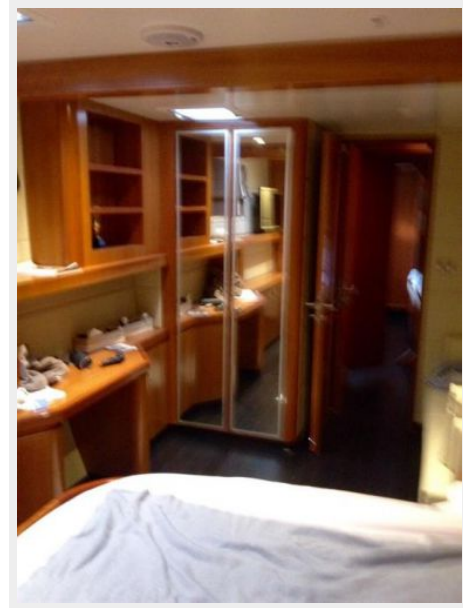




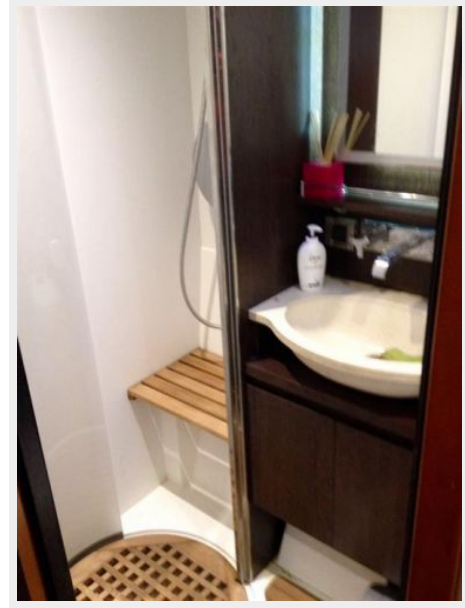
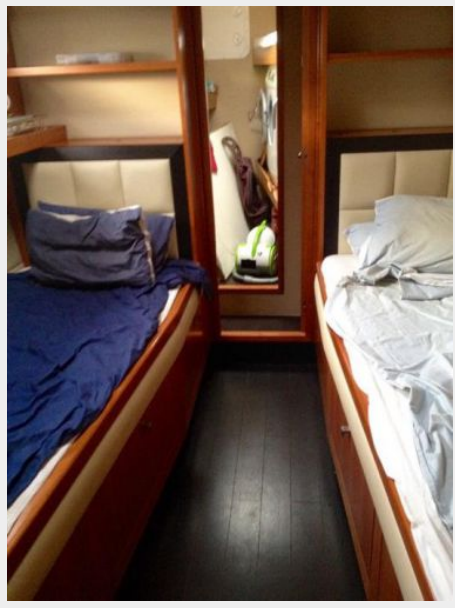


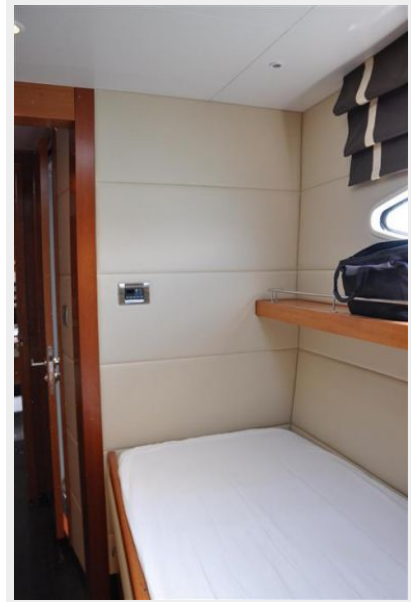




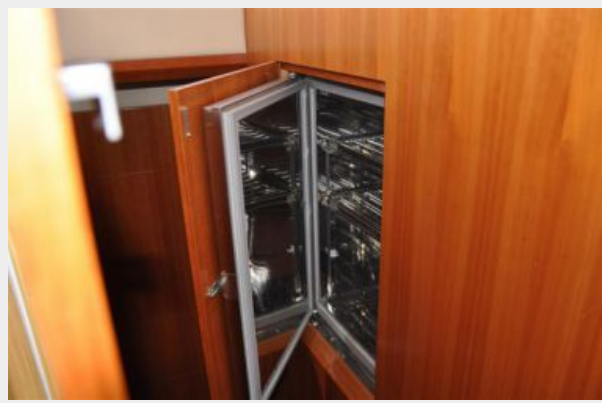
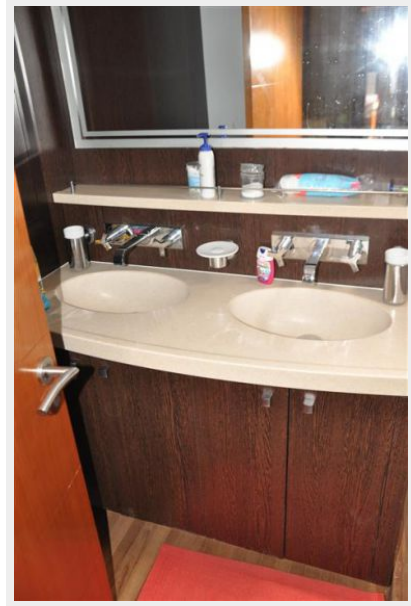


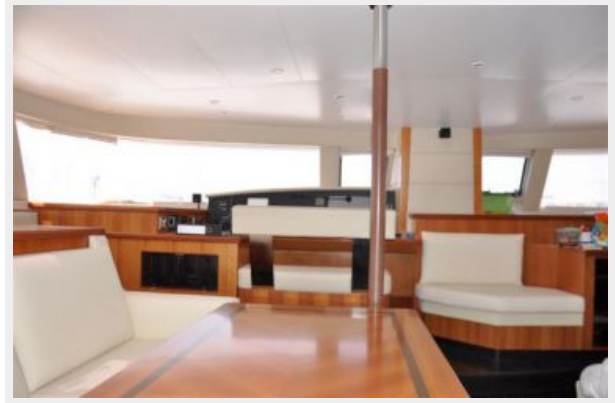
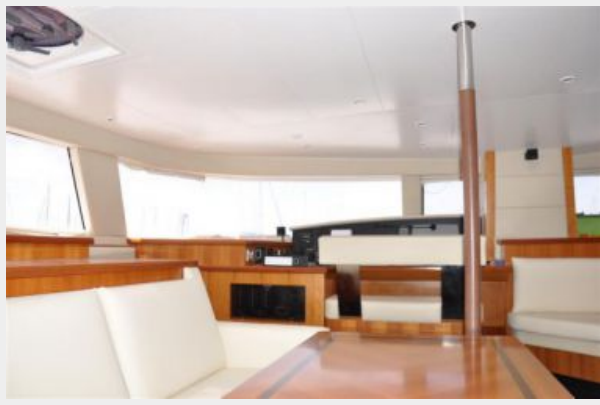


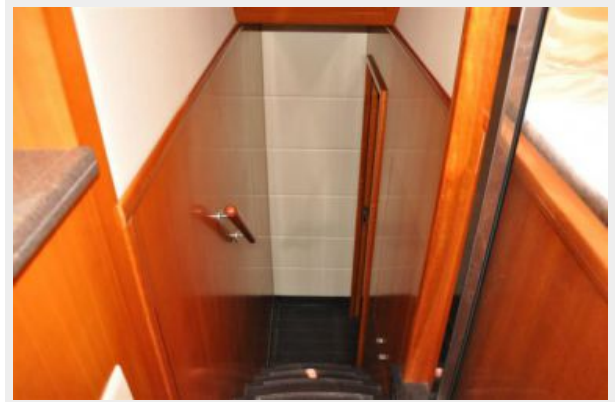


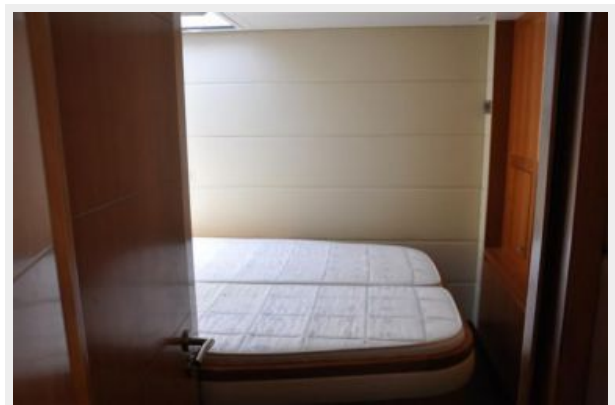
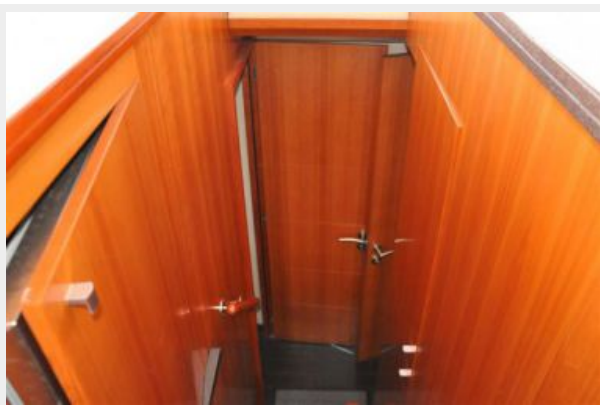






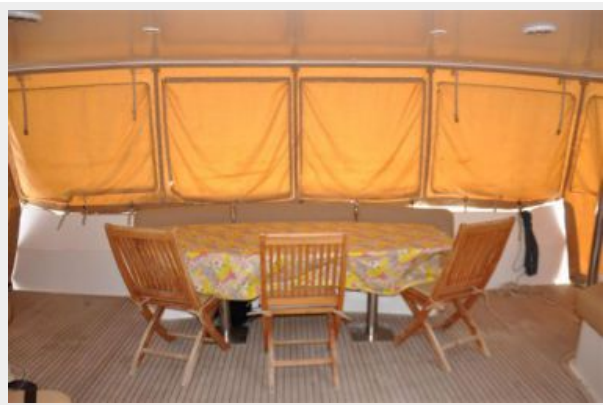


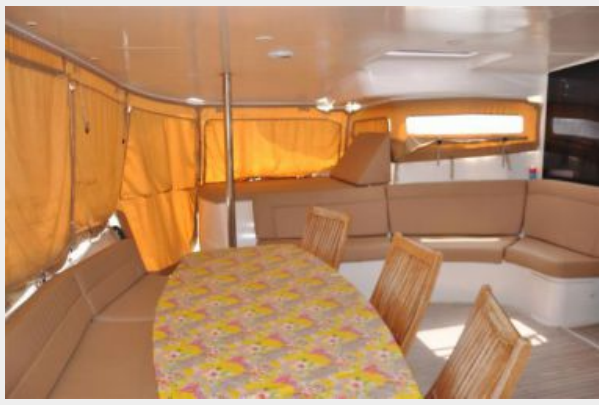




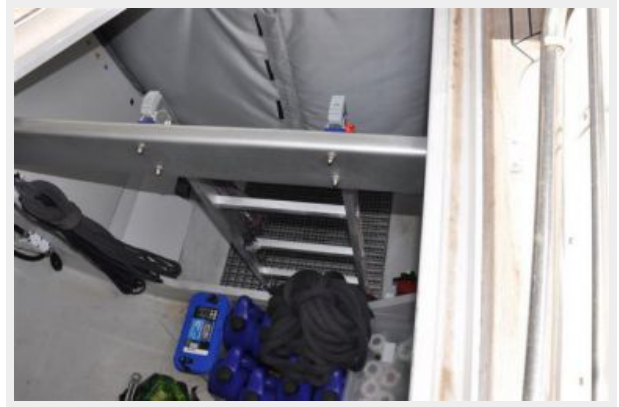
















# CONTACTS

---

Andrey Shestakov, leading yacht broker of the sales department of Shestakov Yacht Sales Inc. Shestakov Yacht Sales Inc., the official representative of the Miami/Fort Lauderdale FL headquarters.

## Contact details

---

Email: [andrey@shestakovyachtsales.com](mailto:andrey@shestakovyachtsales.com)

Web: [shestakovyachtsales.com/en/](http://shestakovyachtsales.com/en/)

## Telephones

---

USA: +1(954)274-4435

## Office hours

---

Monday – Saturday: **9:00 - 21:00** EDT

Sunday: **closed**

## Address

---



Harbour Towne Marina, 850 NE 3rd St,  
STE 213, Dania, FL 33004