

NEVER QUIT — HATTERAS



Builder: HATTERAS

Year Built: 2004

Model: Sport Fisherman

Price: PRICE ON APPLICATION

Location: United States

LOA: 50' 0" (15.24m)

Beam: 16' 8" (5.08m)

Min Draft: 5' 4" (1.63m)

Cruise Speed: 29 Kts. (33 MPH)

Max Speed: 34 Kts. (39 MPH)

Our experienced yacht broker, Andrey Shestakov, will help you choose and buy a yacht that best suits your needs **Never Quit — HATTERAS** from our catalogue. Presently, at Shestakov Yacht Sales Inc., we have a wide variety of yachts available on our sale's list. We also work in close contact with all the big yacht manufacturers from all over the world.

If you would like to buy a yacht **Never Quit — HATTERAS** or would like help answering any questions concerning purchasing, selling or chartering a yacht, please call **+1(954)274-4435**

TABLE OF CONTENTS

TABLE OF CONTENTS	2
SPECIFICATIONS	4
Overview	4
Basic Information	4
Dimensions	4
Speed, Capacities and Weight	4
Accommodations	5
Hull and Deck Information	5
Engine Information	5
DETAILED INFORMATION	6
Broker's Remarks	6
Accommodations	6
Salon	6
Galley	6
Master Stateroom and Head	6
VIP Stateroom	7
Guest Stateroom and Head	7
Flybridge	7
Electronics and Navigation Equipment	7
Electrical System	7
Cockpit	8
Engine and Mechanical Equipment	8
Deck and Hull	8
Exclusions	8
Disclaimer	8
PHOTOS	9
CONTACTS	14
Contact details	14

Telephones	14
Office hours	14
Address	14

SPECIFICATIONS

Overview

A Hatteras Yacht does not aspire to offer a luxury. That is simply where they begin. It is beyond that point – and within the experience each voyage offers – that you begin to understand the true Hatteras difference. That difference, for over half a century, has allowed Hatteras to stand as the benchmark of quality and innovation to which all others aspire. “Never Quit” is one of the nicest, if not the Nicest 50’s on the market!! Outstanding example of a very clean 2005 Hatteras. “Never Quit” has had nothing but the best of care and has been continually updated over the years. It offers exceptional fishing and a superb cruising layout. Currently enjoying life in Hope Town and will come to Palm Beach this January. If you are visiting the Bahamas between now and January be sure to call and set an appointment. We can get you aboard easily and look forward to showing you this fine example.

Basic Information

Category: Sport Fisherman

Sub Category: Convertible

Model Year: 2005

Year Built: 2004

Country: United States

Dimensions

LOA: 50' 0" (15.24m)

Beam: 16' 8" (5.08m)

Min Draft: 5' 4" (1.63m)

Speed, Capacities and Weight

Cruise Speed: 29 Kts. (33 MPH)

Max Speed: 34 Kts. (39 MPH)

Displacement: 60000 Pounds

Water Capacity: 184 Gallons

Holding Tank: 85 Gallons

Fuel Capacity: 1060 Gallons

Accommodations

Total Cabins: 3

Sleeps: 6

Hull and Deck Information

Hull Material: Fiberglass

Engine Information

Engines: 2

Manufacturer: CAT

Model: C18

Engine Type: Inboard

Fuel Type: Diesel

DETAILED INFORMATION

Broker's Remarks

A Hatteras Yacht does not aspire to offer a luxury. That is simply where they begin. It is beyond that point – and within the experience each voyage offers – that you begin to understand the true Hatteras difference. That difference, for over half a century, has allowed Hatteras to stand as the benchmark of quality and innovation to which all others aspire. “Never Quit” is one of the nicest, if not the Nicest 50’s on the market!! Outstanding example of a very clean 2005 Hatteras. “Never Quit” has had nothing but the best of care and has been continually updated over the years. It offers exceptional fishing and a superb cruising layout. Currently enjoying life in Hope Town and will come to Palm Beach this January. If you are visiting the Bahamas between now and January be sure to call and set an appointment. We can get you aboard easily and look forward to showing you this fine example.

Accommodations

This extraordinary 50' Hatteras is a MUST SEE. Her oversize cockpit and tournament style helm make operation and functionality simple. She features a low profile galley with abundant storage throughout. Below are three staterooms with the master being amidships and VIP is forward with centerline queen berth. Guest stateroom with upper/lower berths is to port. Three are two heads with the master being ensuite, and a full laundry center below as well. All wood throughout is high-gloss cherry wood.

Salon

Hunter Douglas window blinds Custom coffee table with inlay and storage Ship's electrical panel aft to port Amtico teak and holly salon entrance Barrel chair L-shaped leather settee with storage underneath New 42" Samsung LCD TV- 2017 New 2017 Sony receiver - str DN1076 Sony Blu Ray player Apple TV Stereo with surround sound Carpet runner Reupholstered sofa seating and chair

Galley

L-shaped dinette 2 drawer Sub-zero refrigerator, under counter 2 drawer sub-zero freezer and ice maker, under counter Sharp Carousel microwave / convection oven Forceio 2-burner cooktop Garbage disposal Corian counters and dinette table top Drawer storage below and shelf storage above Teak and holly galley sole

Master Stateroom and Head

Located amidship to starboard and has an ensuite head: Queen berth with storage below, cedar lined Cherry credenza outboard storage Reading lamps Cedar lined hanging locker Sharp 20" flat screen TV Access to ensuite head Full length mirror **MASTER STATEROOM HEAD:** Molded corian countertops Mirrored vanity above Teak and holly sole Freshwater Vacu-Flush head Stall shower Linen closet Mirrored ceiling upgrade

VIP Stateroom

The VIP stateroom is located forward in the boat and the berth is centerline queen. There is also a private access to guest head. Centerline queen berth, cedar lined and lifts for storage Overhead hatch with shade Cedar lined hanging lockers, port and starboard and one in companionway Reading lamps Sharp flat screen TV Central VAC

Guest Stateroom and Head

Upper and lower twin bunks Reading lamps Whirlpool stackable washer and dryer **GUEST HEAD:** Molded Corian countertops Teak and holly sole Mirrored ceiling Fresh water Vacu-flush head Mirrored vanity Stall shower Access from both guest cabins and companionway

Flybridge

Centerline helm 4 quarts lights molded into hartop Mechanical gauge package Helm pod with single lever controls Power steering Molded in overhead lights, red and white (3) sided enclosure with Strataglass (New 11/14) Aft rail rocket launcher 7 rods Molded in navigation lights Flush mounted electronics with clear cover over electronics 2 Murry Bros helm chairs with 4" stainless pedestal- refinished in 2016 Pipewelders double spreader outriggers and center rigger Hatteras alarm monitor panel Insulated drink box - starboard Storage under seating both in front of helm and down starboard side Newly upholstered seating

Electronics and Navigation Equipment

New Garmin autopilot 12/15 Furuno NavNet system Icom 602 VHF VHF #2 new std Horizion 6x 5505- 1/15 8" Ritchie compass Full analog gauge package ACR EPIRB New Garmin 7215 Helm- 2015 New Garmin 6212 Cockpit- 2015 Video engine room to helm CAT monitors to Garmin helm Garmin GSD 26 chip sounder Garmin 6xm xm weather Garmin wi-fi Rogue wi-fi booster 2016 All new antenna's hard top Fushion MSUD750 Bluetooth Amp- sub 6 speakers KVH tracvision, New TV5 & all new direct receivers 7/16

Electrical System

50 amp single shore power 220v shore cord with Glendenning cable master 110 AC 12 / 24 DC

17 kw Onan generator with sound shield Central bonding system Master Volt battery charger

Cockpit

Completely repainted and non-skid 2016 6 Rod holders in covering boards 4 cleaning rod holders in house pilasters Engine room access Fresh and saltwater washdown Transom door with flip up gate lid Murry Brothers fighting chair- reupholstered and refinished in 2016 Floor mounted fishbox with macerator and with ice feed from ER Cockpit freezer Tackle storage port and starboard Cockpit stereo speaker Indirect cockpit lighting

Engine and Mechanical Equipment

Twin Caterpillar C-18 engines rated at 1015 HP each. Onan 17 kw Generator Aqua wisper water maker- rebuilt and upgraded at 75gph- 2016 Engine room fans Power assist steering system Oil change system Racor primary fuel filters, dual FM200 fire system Dripless shaft seals with spares on shafts AC / DC lighting throughout Shore cord Cablemaster - Glendenning Fuel priming system Battery charging system Exhaust blowers High water alarm Water separator muffler for generator New Eskimo ice chipper to fishbox model E1540 10/16

Deck and Hull

Molded Pipewelders hardtop White hull color Blue bottom paint Aluminum bow rail Bow pulpit Maxwell windlass with 500 3/4 braided nylon Trim tabs Molded in navigation lights Transom door with lift gate 2x new Underwater lights- LED Lumishole Blue 10/15 Revere 6 man life raft

Exclusions

Owner's personal belongings.

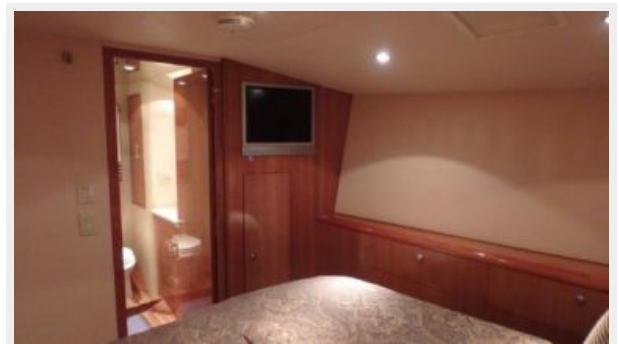
Disclaimer

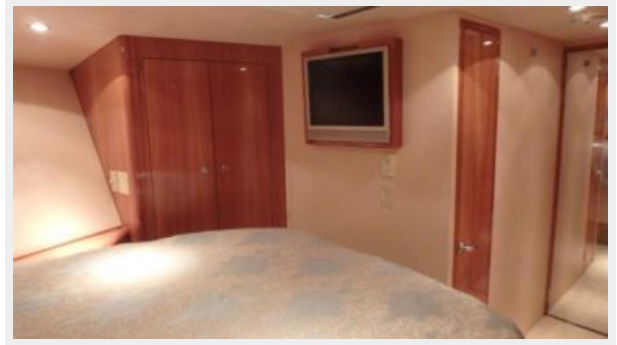
The Company offers the details of this vessel or yacht in good faith but cannot guarantee or warrant the accuracy of this information nor warrant the condition of the vessel. A buyer should instruct his representatives, agents, or his surveyors, to investigate such details as the buyer desires validated. This vessel or yacht is offered subject to prior sale, price change, or withdrawal without notice.

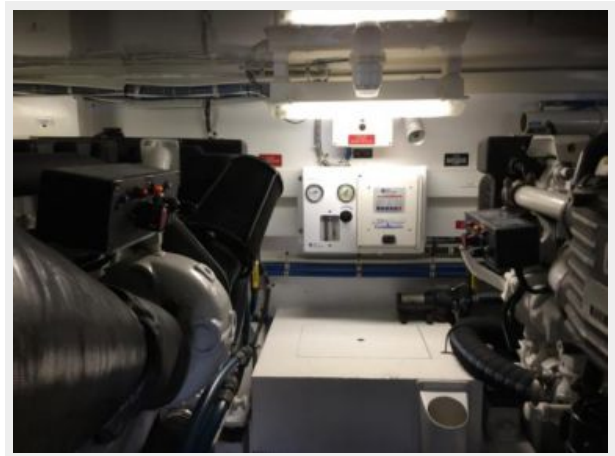
PHOTOS











CONTACTS

Andrey Shestakov, leading yacht broker of the sales department of Shestakov Yacht Sales Inc. Shestakov Yacht Sales Inc., the official representative of the Miami/Fort Lauderdale FL headquarters.

Contact details

Email: andrey@shestakovyachtsales.com

Web: shestakovyachtsales.com/en/

Telephones

USA: +1(954)274-4435

Office hours

Monday – Saturday: **9:00 - 21:00** EDT

Sunday: **closed**

Address



Harbour Towne Marina, 850 NE 3rd St,
STE 213, Dania, FL 33004